

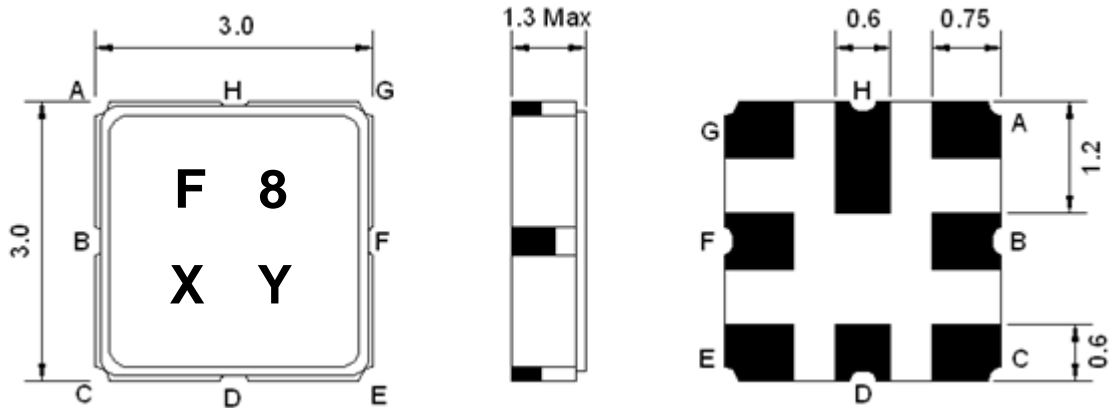
- Band 3, Rx Balanced SAW Filter
- Revision 0: January 2013

Electrical Characteristics

MAXIMUM RATING				
PARAMETERS DESCRIPTION	UNIT	MINIMUM	TYPICAL	MAXIMUM
Operating Temperature Range	°C	-30	-	+85
Storage Temperature Range	°C	-40	-	+85
Maximum DC Voltage	V	-	-	0
Maximum Input Power	dBm	-	-	10
Source Impedance (unbalanced) ⁽¹⁾	Ω	-	50	-
Load Impedance (balanced) ⁽¹⁾	Ω	-	200	-
Package type & size	S21			
Length x Width	mm ²	-	3.0 x 3.0	-
Height	mm	-	-	1.3

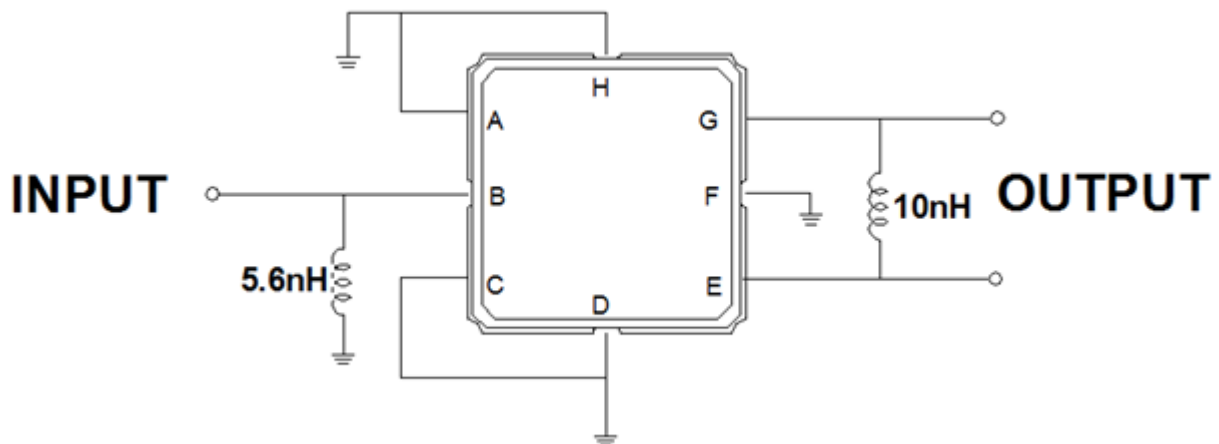
ELECTRICAL SPECIFICATION				
PARAMETERS DESCRIPTION	UNIT	MINIMUM	TYPICAL	MAXIMUM
Center Frequency (Fo)	MHz	-	1842.5	-
Insertion Loss within 1805.0 ~ 1880.0 MHz	dB	-	2.4	3.2
Amplitude Ripple within 1805.0 ~ 1880.0 MHz	dB _{p-p}	-	1.0	2.0
Attenuation:				
300.0 ~ 1710.0 MHz	dB	30	38	-
1710.0 ~ 1785.0 MHz	dB	5	8	-
1920.0 ~ 1980.0 MHz	dB	20	25	-
VSWR within 1805.0 ~ 1880.0 MHz	-	-	1.4	2.0

Notes: (1) With Matching Network

Package Dimensions


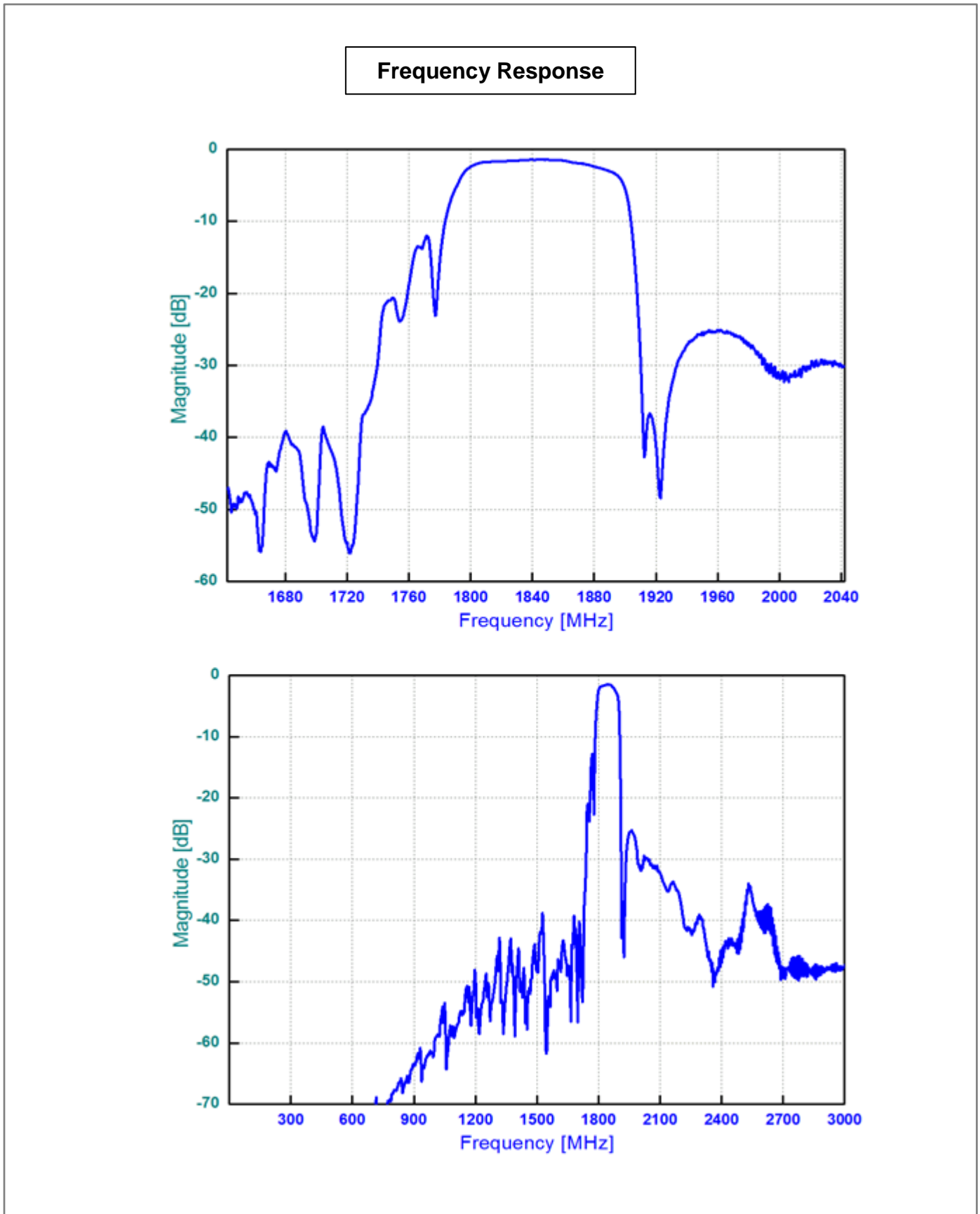
Marking Descriptions	
F	Band 3 Application
8	Series Number
X	Date Code (Year)
Y	Date Code (Month)

Pin Description	
A, C, D, F, H	Ground
B	Input
E, G	Balanced Output

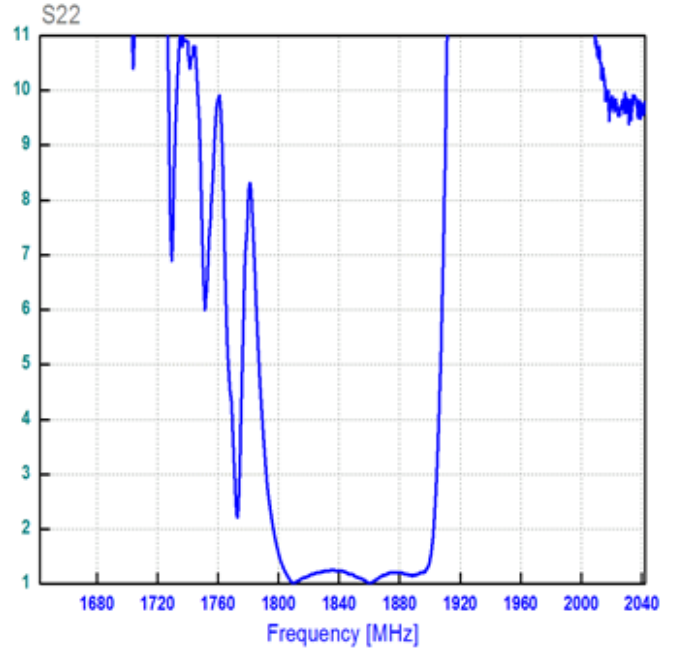
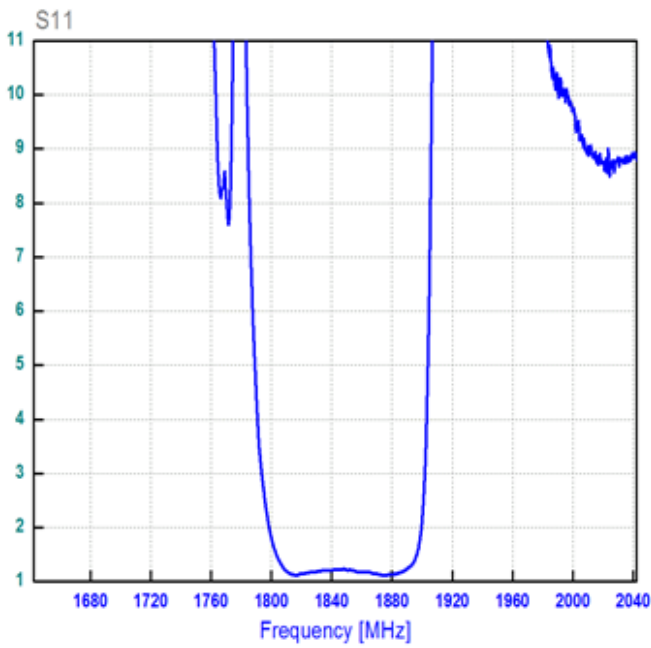
Testing Environment

 Source Impedance: 50 Ω

 Load Impedance: 200 Ω

Frequency Characteristics



VSWR



Smith Chart

