

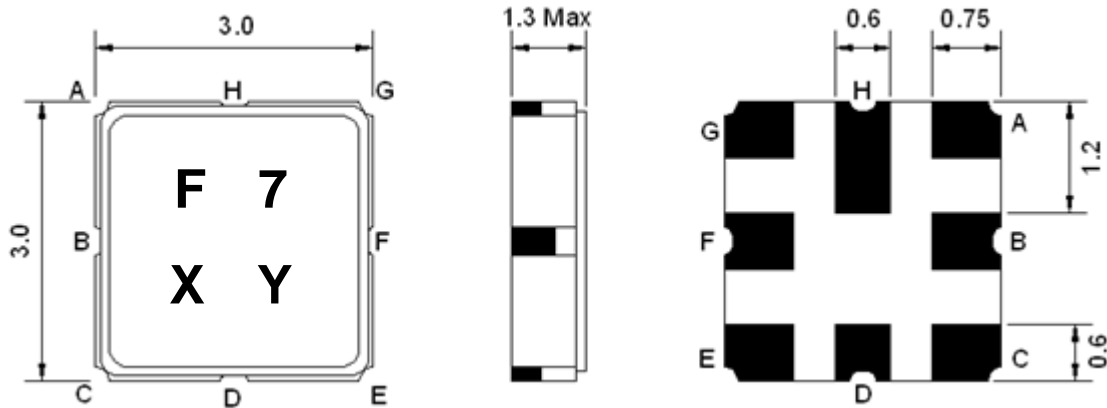
- Band 3, Tx Balanced SAW Filter
- Revision 0: January 2013

### Electrical Characteristics

MAXIMUM RATING				
PARAMETERS DESCRIPTION	UNIT	MINIMUM	TYPICAL	MAXIMUM
Operating Temperature Range	°C	-30	-	+85
Storage Temperature Range	°C	-40	-	+85
Maximum DC Voltage	V	-	-	0
Maximum Input Power	dBm	-	-	10
Source Impedance (unbalanced) <sup>(1)</sup>	Ω	-	50	-
Load Impedance (balanced) <sup>(1)</sup>	Ω	-	200	-
Package type & size	S21			
Length x Width	mm <sup>2</sup>	-	3.0 x 3.0	-
Height	mm	-	-	1.3

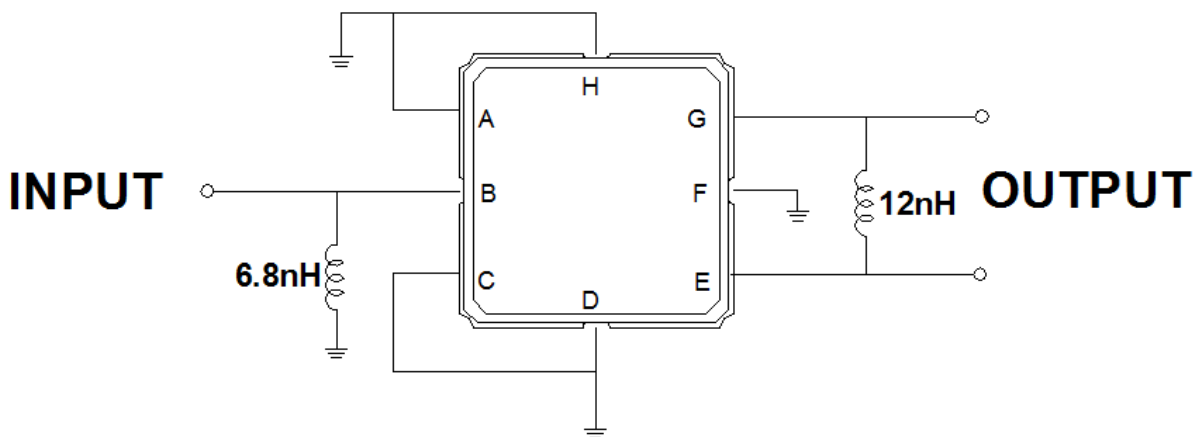
ELECTRICAL SPECIFICATION				
PARAMETERS DESCRIPTION	UNIT	MINIMUM	TYPICAL	MAXIMUM
Center Frequency (Fo)	MHz	-	1747.5	-
Insertion Loss within 1710.0 ~ 1785.0 MHz	dB	-	2.4	3.2
Amplitude Ripple within 1710.0 ~ 1785.0 MHz	dB <sub>p-p</sub>	-	1.1	2.0
<b>Attenuation:</b>				
300.0 ~ 1645.0 MHz	dB	25	31	-
1805.0 ~ 1880.0 MHz	dB	8	18	-
1880.0 ~ 1980.0 MHz	dB	25	27	-
VSWR within 1710.0 ~ 1785.0 MHz	-	-	1.4	2.0

**Notes:** (1) With Matching Network

**Package Dimensions**


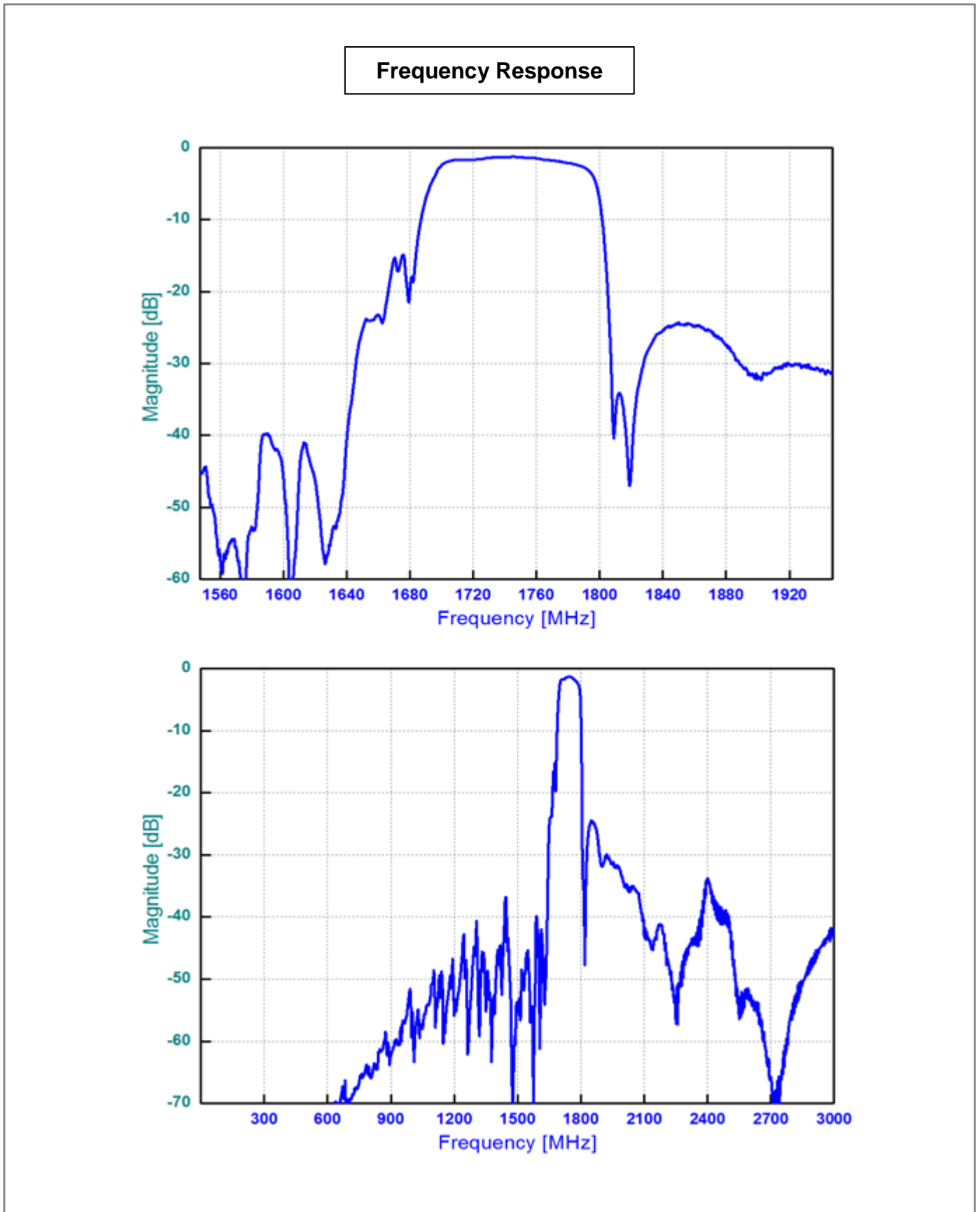
Marking Descriptions	
F	Band 3 Application
7	Series Number
X	Date Code (Year)
Y	Date Code (Month)

Pin Description	
A, C, D, F, H	Ground
B	Input
E, G	Balanced Output

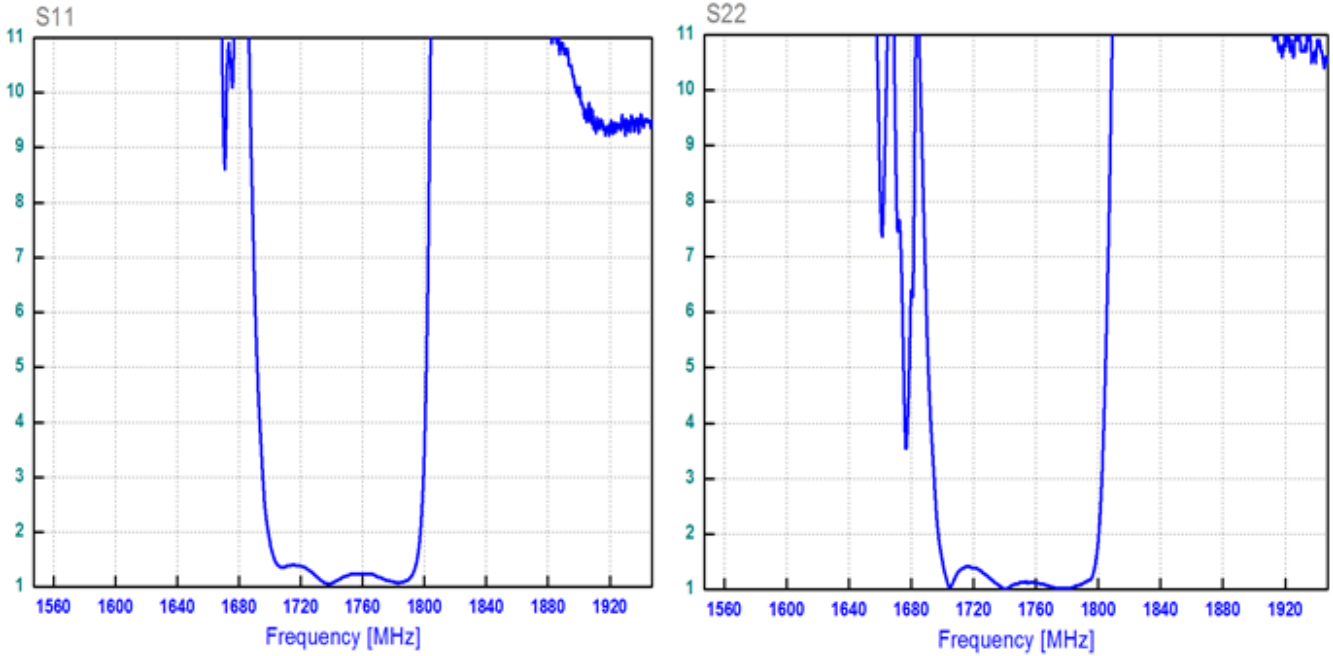
**Testing Environment**

 Source Impedance: 50  $\Omega$ 

 Load Impedance: 200  $\Omega$

**Frequency Characteristics**



**VSWR**



**Smith Chart**

