

- GPS+Glonass, Balanced SAW Filter
- Revision 1: April 2013

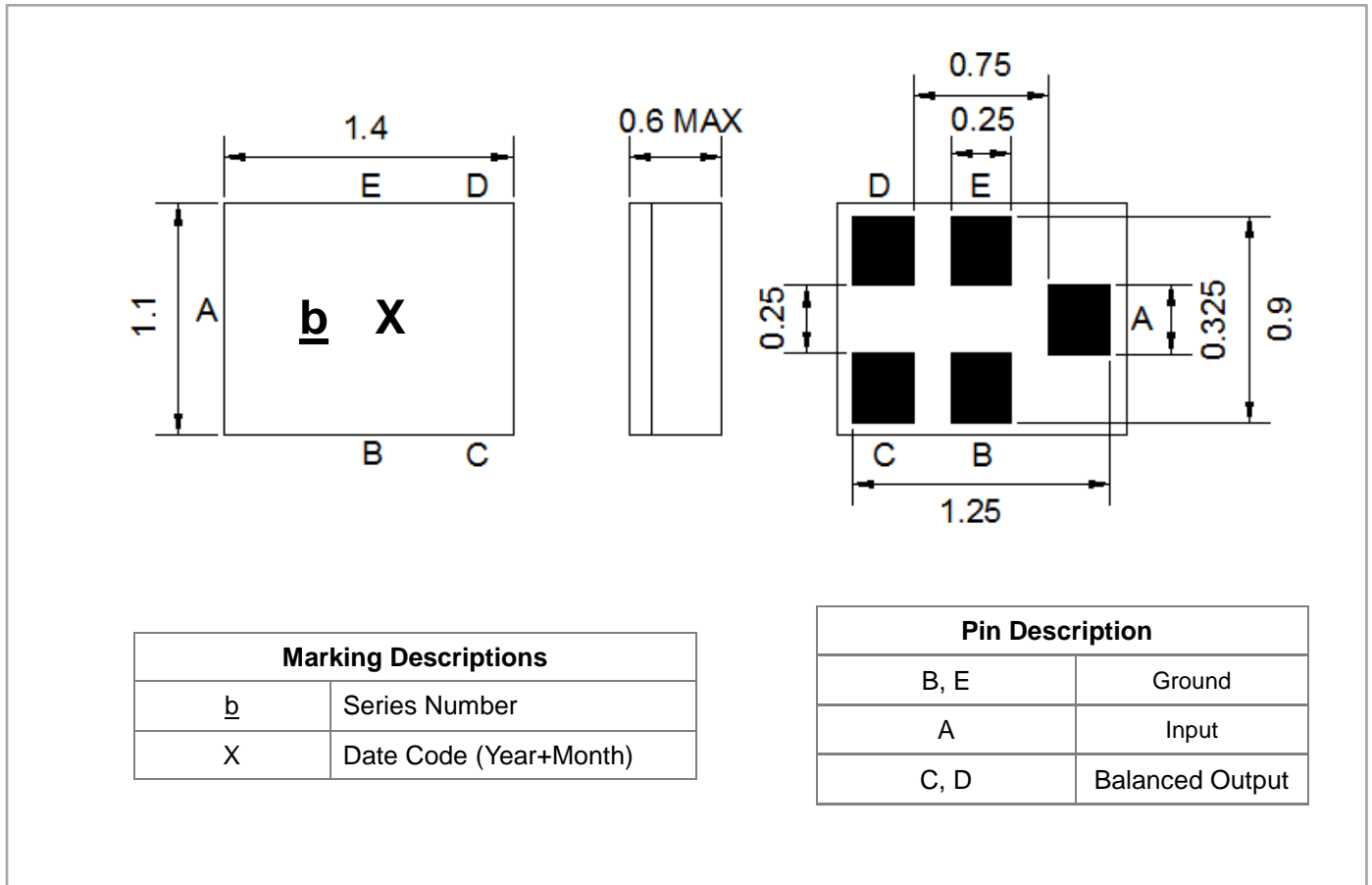
Electrical Characteristics

MAXIMUM RATING				
PARAMETERS DESCRIPTION	UNIT	MINIMUM	TYPICAL	MAXIMUM
Operating Temperature Range	°C	-30	-	+85
Storage Temperature Range	°C	-40	-	+85
Maximum DC Voltage	V	-	-	0
Maximum Input Power	dBm	-	-	10
Source Impedance (unbalanced) ⁽¹⁾	Ω	-	50	-
Load Impedance (balanced) ⁽¹⁾	Ω	-	100	-
Package type & size	C21			
Length x Width	mm ²	-	1.4 x 1.1	-
Height	mm	-	-	0.6

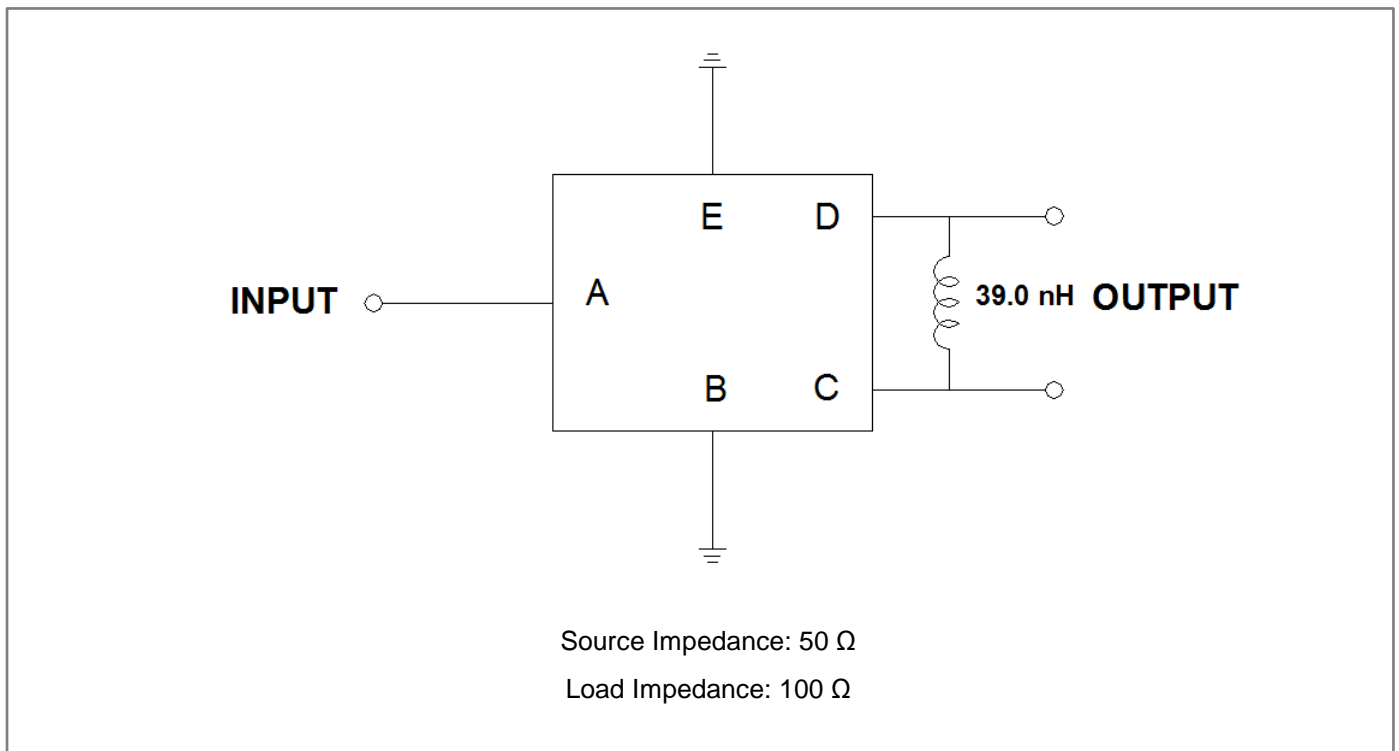
ELECTRICAL SPECIFICATION				
PARAMETERS DESCRIPTION	UNIT	MINIMUM	TYPICAL	MAXIMUM
Center Frequency (Fo)	MHz	-	1585.655	-
Maximum Insertion Loss				
1574.42 ~ 1576.42 MHz	dB	-	1.1	1.5
1565.42 ~ 1585.42 MHz	dB	-	1.3	1.8
1597.55 ~ 1605.89 MHz	dB	-	1.6	2.1
Group delay ripple within 1597.55 ~ 1605.89 MHz	ns	-	7.5	15
Attenuation:				
0.1 ~ 725.0 MHz	dB	50	55	-
725.0 ~ 925.0 MHz	dB	45	53	-
925.0 ~ 1427.0 MHz	dB	40	45	-
1427.0 ~ 1463.0 MHz	dB	35	44	-
1463.0 ~ 1525.0 MHz	dB	25	33	-
1675.0 ~ 1710.0 MHz	dB	25	33	-
1710.0 ~ 1785.0 MHz	dB	30	37	-
1850.0 ~ 1980.0 MHz	dB	40	47	-
1980.0 ~ 2400.0 MHz	dB	35	41	-
2400.0 ~ 2500.0 MHz	dB	40	46	-
2500.0 ~ 2570.0 MHz	dB	40	46	-
2570.0 ~ 3155.0 MHz	dB	35	42	-
3155.0 ~ 4000.0 MHz	dB	30	38	-
4000.0 ~ 6000.0 MHz	dB	30	37	-
VSWR Input				
1574.42 ~ 1576.42 MHz	-	-	1.5	2.1
1597.55 ~ 1605.89 MHz	-	-	1.3	2.0
VSWR Output				
1574.42 ~ 1576.42 MHz	-	-	1.6	2.2
1597.55 ~ 1605.89 MHz	-	-	1.5	2.0

Notes: (1) With Matching Network (Ref. Testing Environment Circuit as shown below).

Package Dimensions

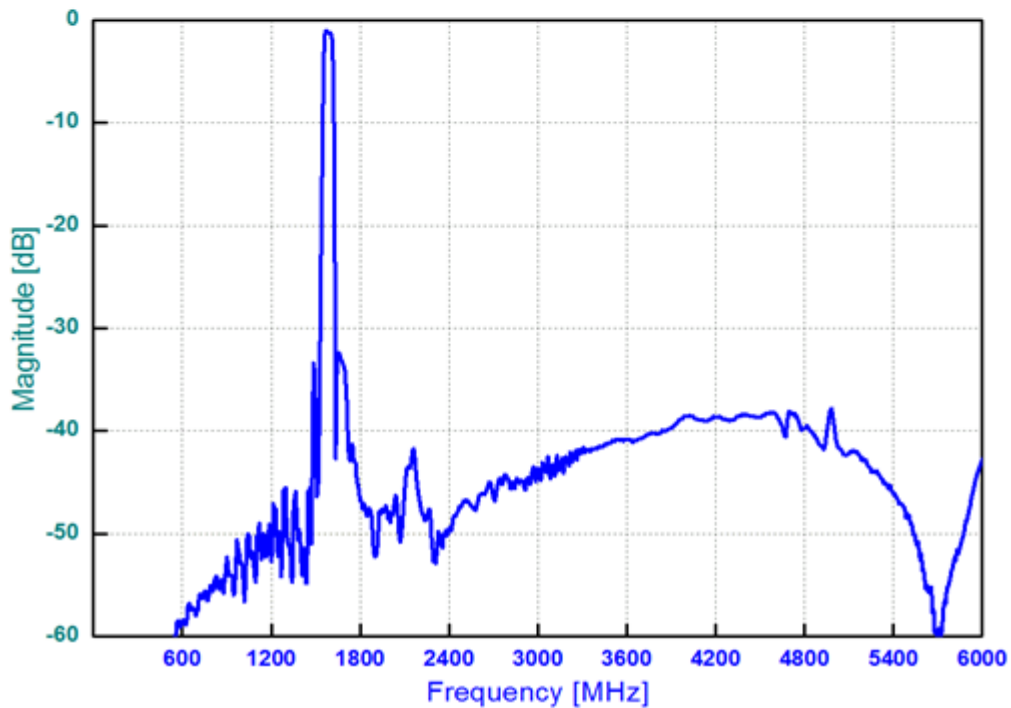
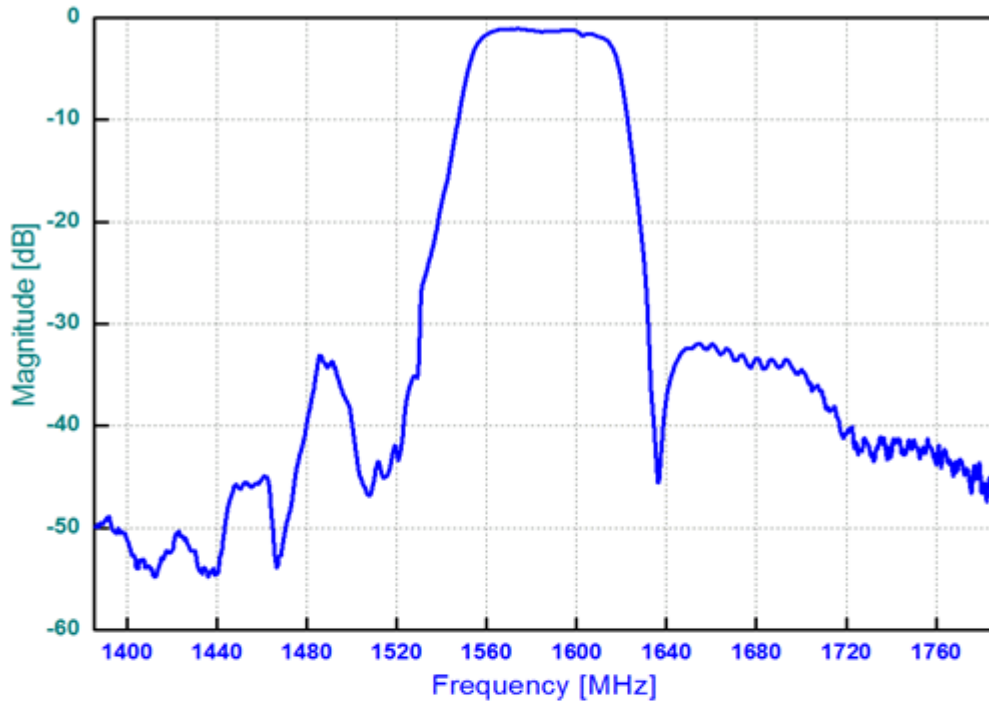


Testing Environment

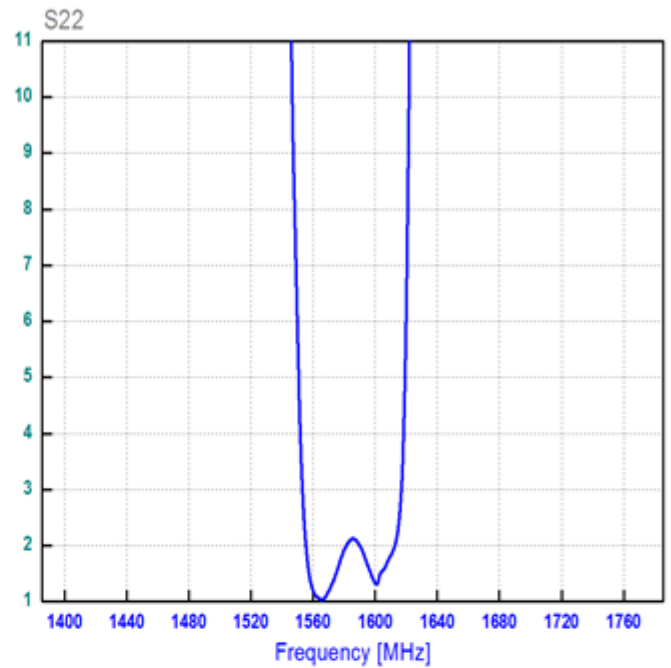
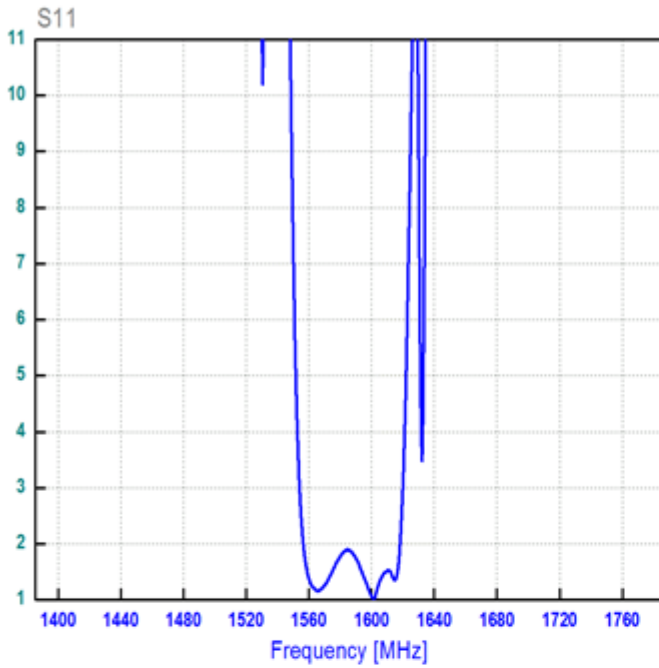


Frequency Characteristics

Frequency Response



VSWR



Smith Chart

