

- EGSM, RF SAW Filter
- Revision 0: July 2012

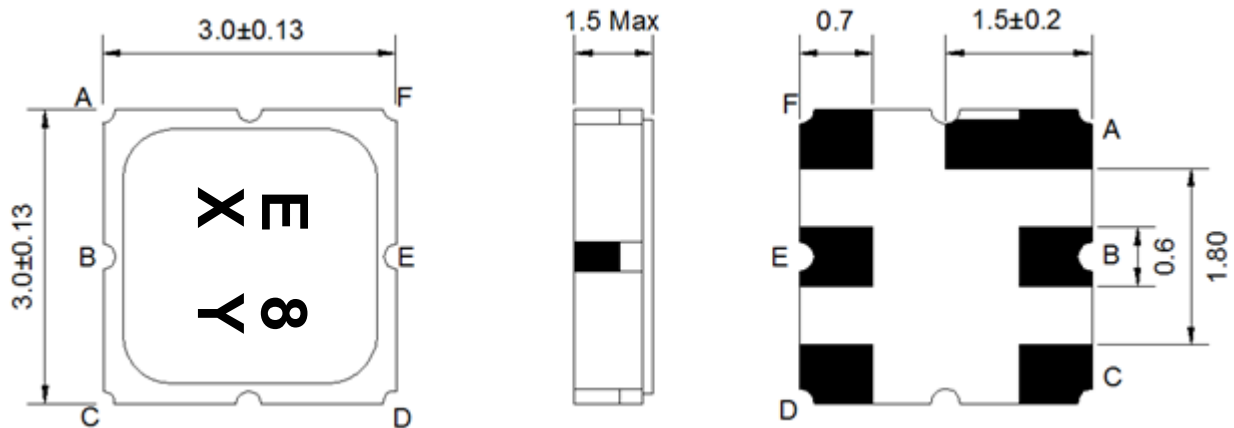
Electrical Characteristics

MAXIMUM RATING				
PARAMETERS DESCRIPTION	UNIT	MINIMUM	TYPICAL	MAXIMUM
Operating Temperature Range	°C	-10	-	+75
Storage Temperature Range	°C	-40	-	+85
Maximum DC Voltage	V	-	-	5
Maximum Input Power	dBm	-	-	18
Source Impedance (single ended) ⁽¹⁾	Ω	-	50	-
Load Impedance (balanced) ⁽¹⁾	Ω	-	150	-
Package type & size	M6			
Length x Width	mm ²	-	3.0 x 3.0	-
Height	mm	-	-	1.5

ELECTRICAL SPECIFICATION				
PARAMETERS DESCRIPTION	UNIT	MINIMUM	TYPICAL	MAXIMUM
Center Frequency (Fo)	MHz	-	942.5	-
Insertion Loss within 925.0 ~ 960.0 MHz	dB	-	-	3.8
Amplitude Ripple within 925.0 ~ 960.0 MHz	dB _{p-p}	-	-	1.4
Attenuation:				
0.0 ~ 880.0 MHz	dB	50	-	-
880.0 ~ 905.0 MHz	dB	28	-	-
905.0 ~ 915.0 MHz	dB	18	-	-
980.0 ~ 1050 MHz	dB	20	-	-
1050.0 ~ 1500.0 MHz	dB	50	-	-
1500.0 ~ 2130 MHz	dB	45	-	-
2130.0 ~ 3000.0 MHz	dB	40	-	-

Notes: (1) With Matching Network

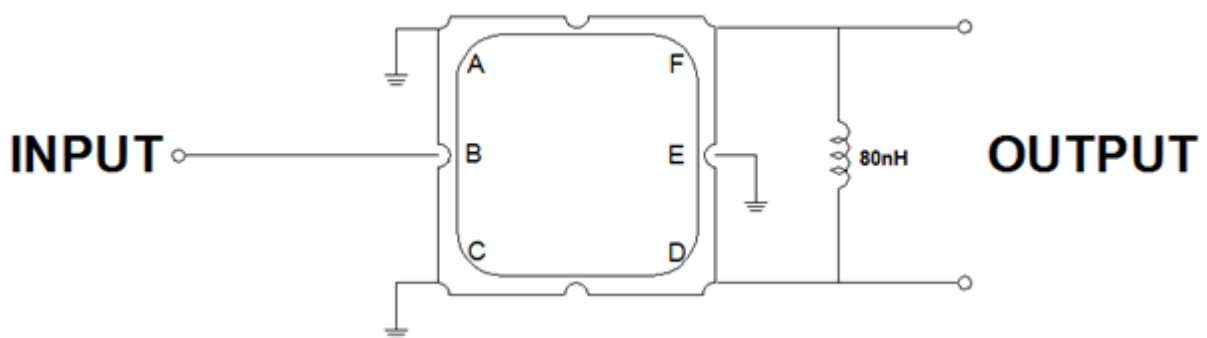
Package Dimensions



Marking Descriptions	
E	EGSM Application
8	Series Number
X	Date Code (Year)
Y	Date Code (Month)

Pin Description	
A, C, D, F	Ground
B	Input
D, F	Balanced Output

Testing Environment



Source Impedance: 50 Ω

Load Impedance: 150 Ω

Frequency Characteristics

Frequency Response



Center 942.500 MHz

Span 200.000 MHz