

- EGSM, Balanced RF SAW Filter
- Revision 0: March 2004

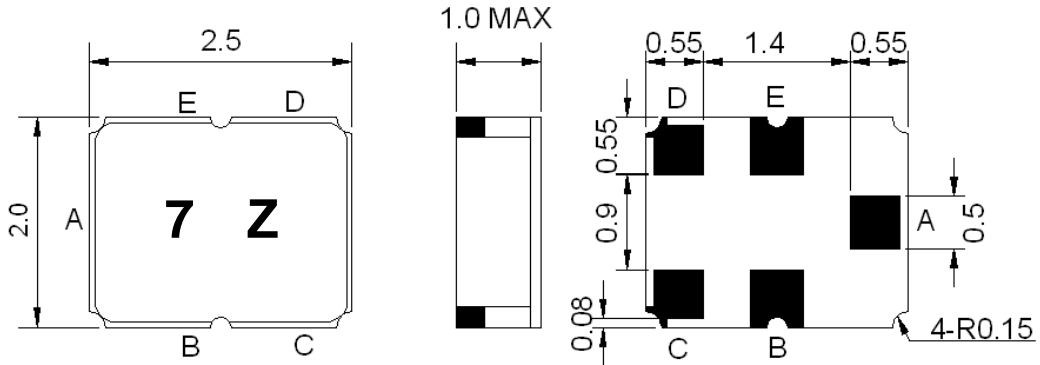
Electrical Characteristics

MAXIMUM RATING				
PARAMETERS DESCRIPTION	UNIT	MINIMUM	TYPICAL	MAXIMUM
Operating Temperature Range	°C	-30	-	+85
Storage Temperature Range	°C	-40	-	+85
Maximum DC Voltage	V	-	-	0
Maximum Input Power	dBm	-	-	15
Source Impedance (single ended) ⁽¹⁾	Ω	-	50	-
Load Impedance (balanced ended) ⁽¹⁾	Ω//nH	-	150//72	-
Package type & size	L1			
Length x Width	mm ²	-	2.5 x 2.0	-
Height	mm	-	-	1.0

ELECTRICAL SPECIFICATION				
PARAMETERS DESCRIPTION	UNIT	MINIMUM	TYPICAL	MAXIMUM
Center Frequency (Fo)	MHz	-	942.5	-
Insertion Loss within 925~960MHz	dB	-	2.8	4.0
Amplitude Ripple within 925~960MHz	dB _{p-p}	-	1.0	2.4
Input/Output VSWR within 925~960 MHz	-	-	1.8	2.5
Attenuation:				
D.C. ~ 880 MHz	dB	50	52	-
880 ~ 905 MHz	dB	30	44	-
905 ~ 915 MHz	dB	10	27	-
980 ~ 1050 MHz	dB	21	27	-
1050 ~ 6000 MHz	dB	50	54	-
Symmetry in band (925~960 MHz)				
Output Amplitude balance (S31 / S21)	dB	-1.3	0	1.2
Output phase balance(Φ(s31)-Φ(s21)+180)	degree	-10	0	10

Notes: (1) With Matching Network

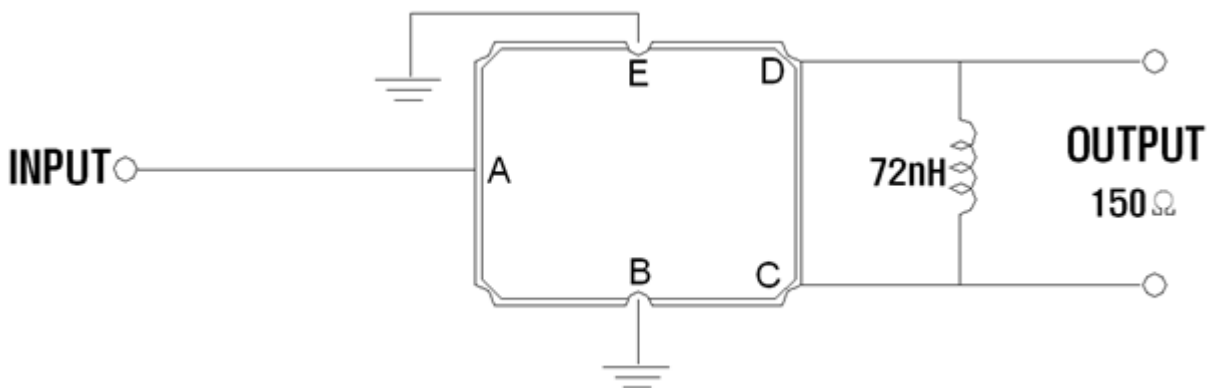
Package Dimensions



Marking Descriptions	
7	Series Number
Z	Date Code (Year+Month)

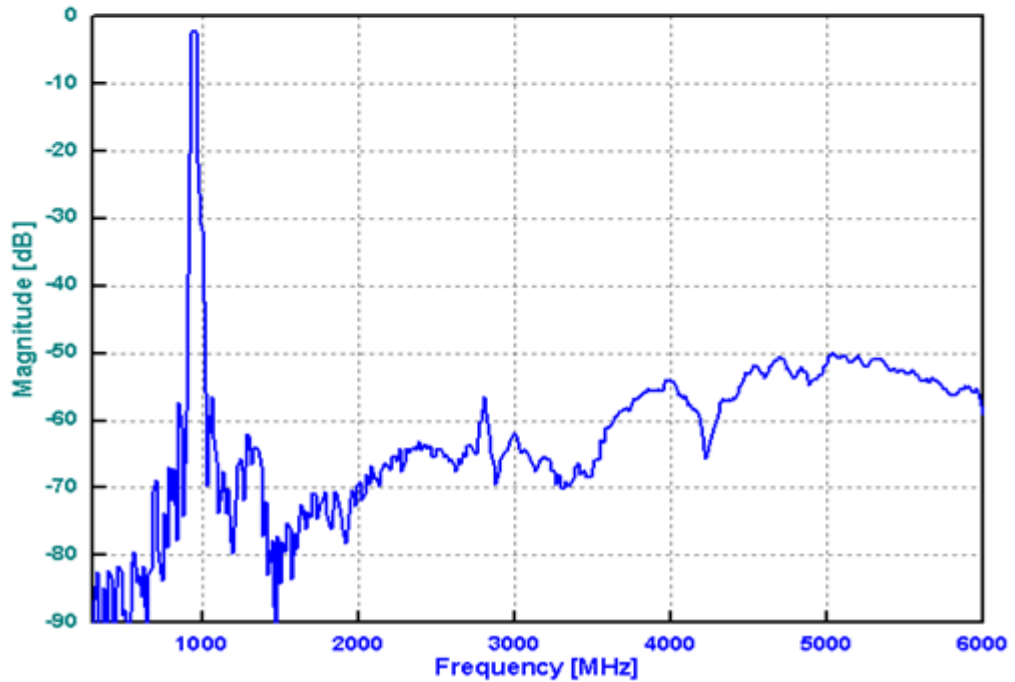
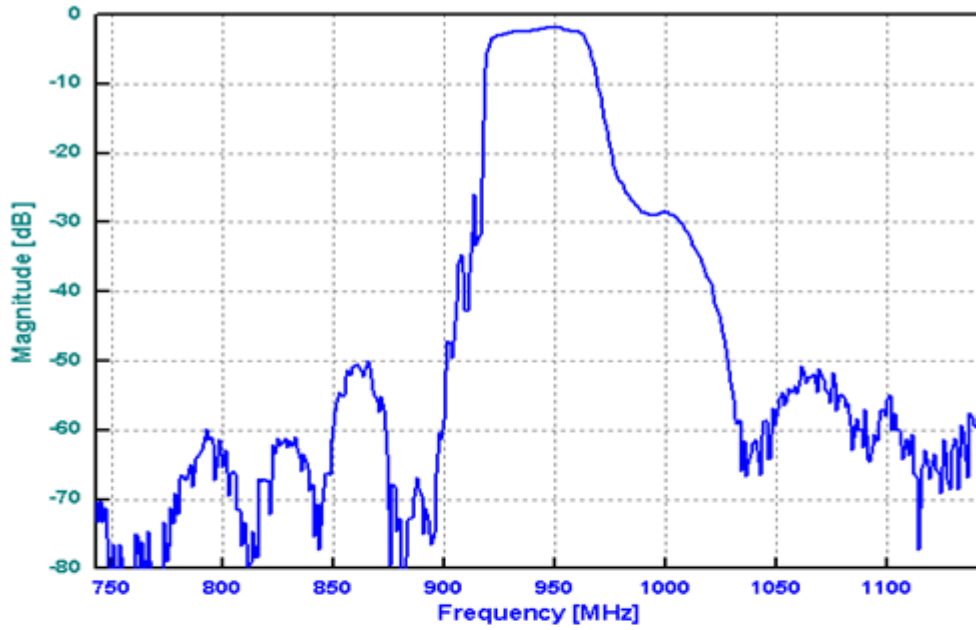
Pin Description	
B, E	Ground
A	In
C, D	Out

Testing Environment

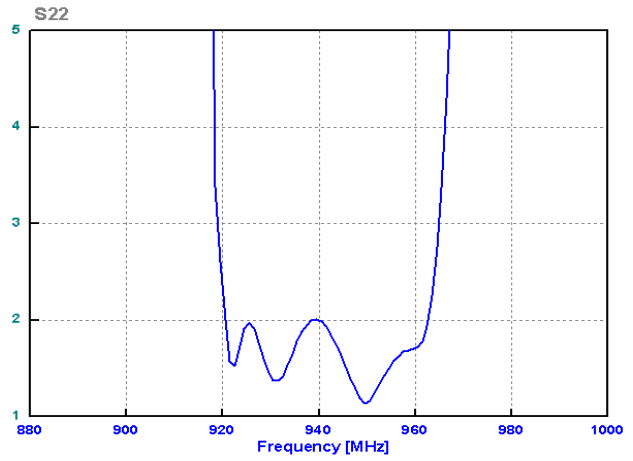
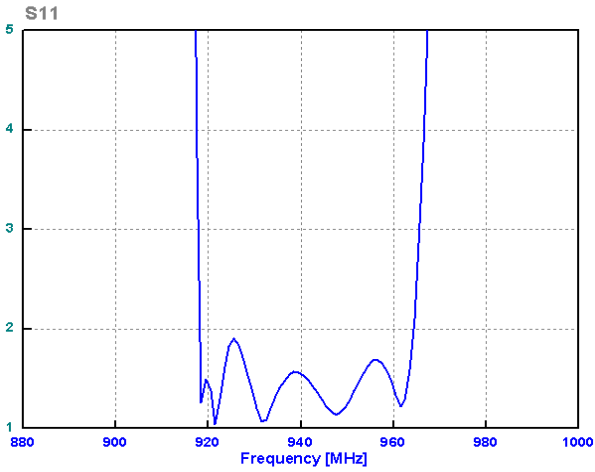


Frequency Characteristics

Frequency Response

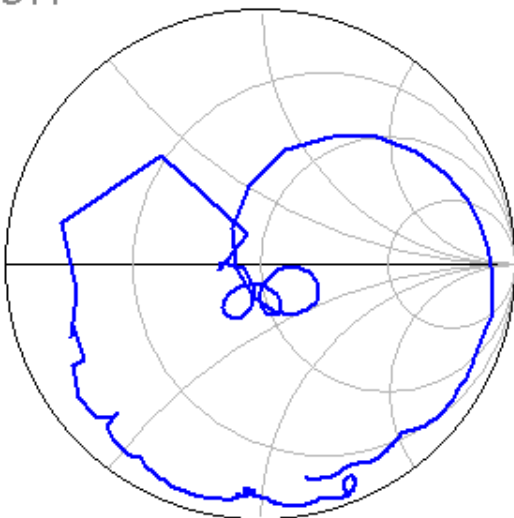


VSWR



Smith Chart

S11



S22

