

- CDMA, Balanced RF-Rx SAW Filter
- Revision 0: JULY 2007

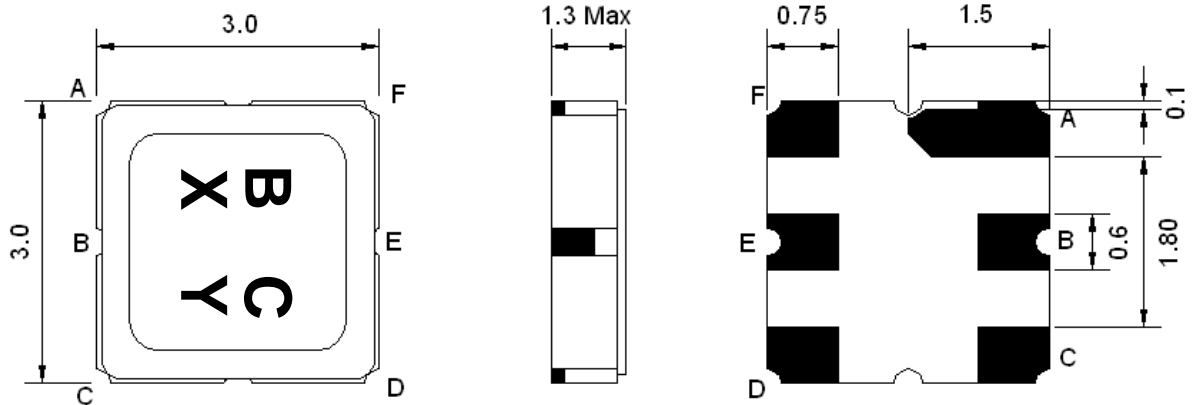
## Electrical Characteristics

MAXIMUM RATING				
PARAMETERS DESCRIPTION	UNIT	MINIMUM	TYPICAL	MAXIMUM
Operating Temperature Range	°C	-30	-	+80
Storage Temperature Range	°C	-40	-	+85
Maximum DC Voltage	V	-	-	5
Maximum Input Power	dBm	-	-	5
Source Impedance (single ended) <sup>(1)</sup>	Ω	-	50	-
Load Impedance (balanced ended) <sup>(1)</sup>	Ω	-	200//56nH	-
Package type & size	M3			
Length x Width	mm <sup>2</sup>	-	3.0 x 3.0	-
Height	mm	-	-	1.3

ELECTRICAL SPECIFICATION				
PARAMETERS DESCRIPTION	UNIT	MINIMUM	TYPICAL	MAXIMUM
Center Frequency (Fo)	MHz	-	881.5	-
Insertion Loss within 869.0 ~ 894.0 MHz	dB	-	2.2	3.0
Amplitude Ripple within 869.0 ~ 894.0 MHz	dB <sub>p-p</sub>	-	0.8	1.5
<b>Attenuation:</b>				
D.C. ~ 824.0 MHz	dB	50	60	-
824.0 ~ 849.0 MHz	dB	35	44	-
924.0 ~ 970.0 MHz	dB	25	30	-
970.0 ~ 1300.0 MHz	dB	50	65	-
1300.0 ~ 2000.0 MHz	dB	40	55	-
2000.0 ~ 3000.0 MHz	dB	30	50	-
VSWR within 869.0 ~ 894.0 MHz	-	-	1.8	2.2

**Notes:** (1) No Matching Network.

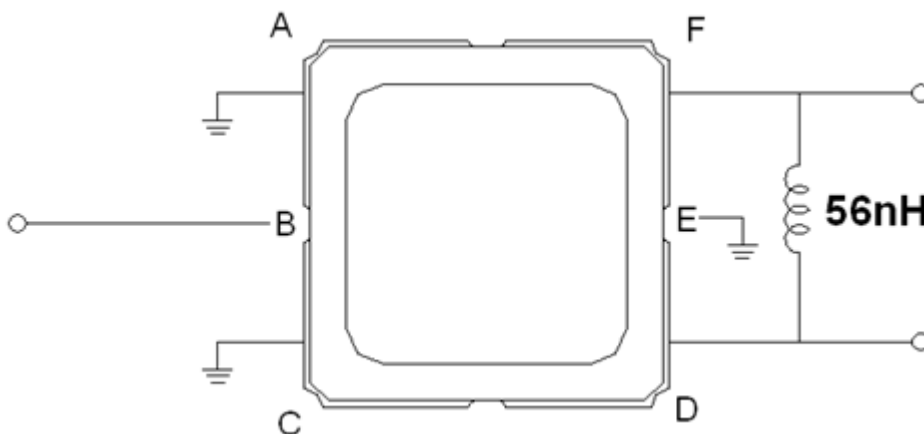
## Package Dimensions



Marking Descriptions	
B	CDMA Application
C	Series Number
X	Date Code (Year)
Y	Date Code (Month)

Pin Description	
A, C, E	Ground
B	In
D, F	Out

## Testing Environment

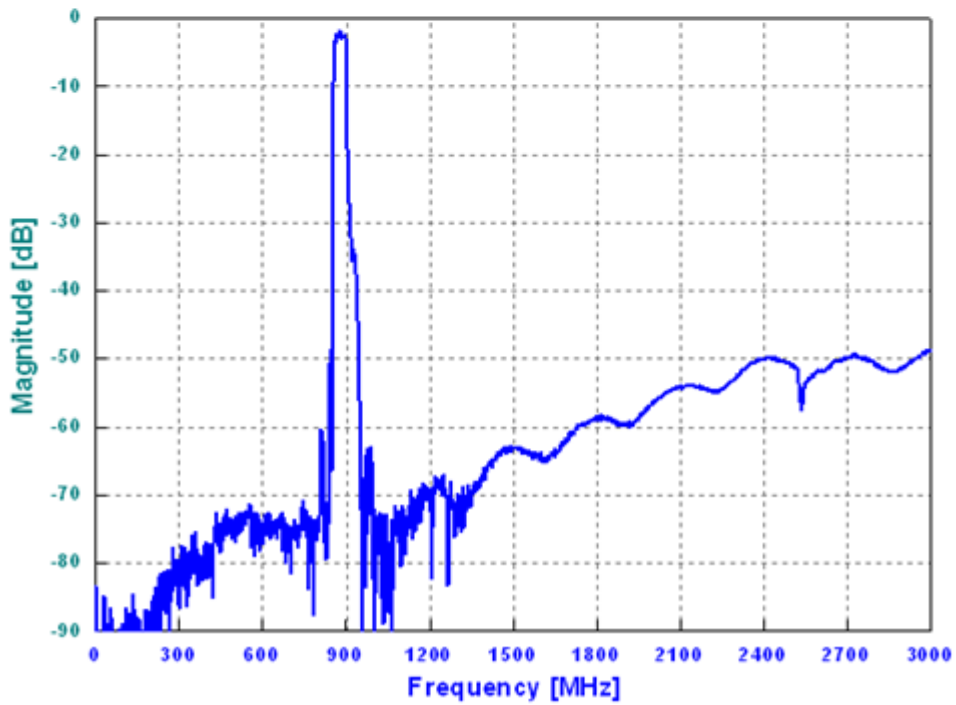
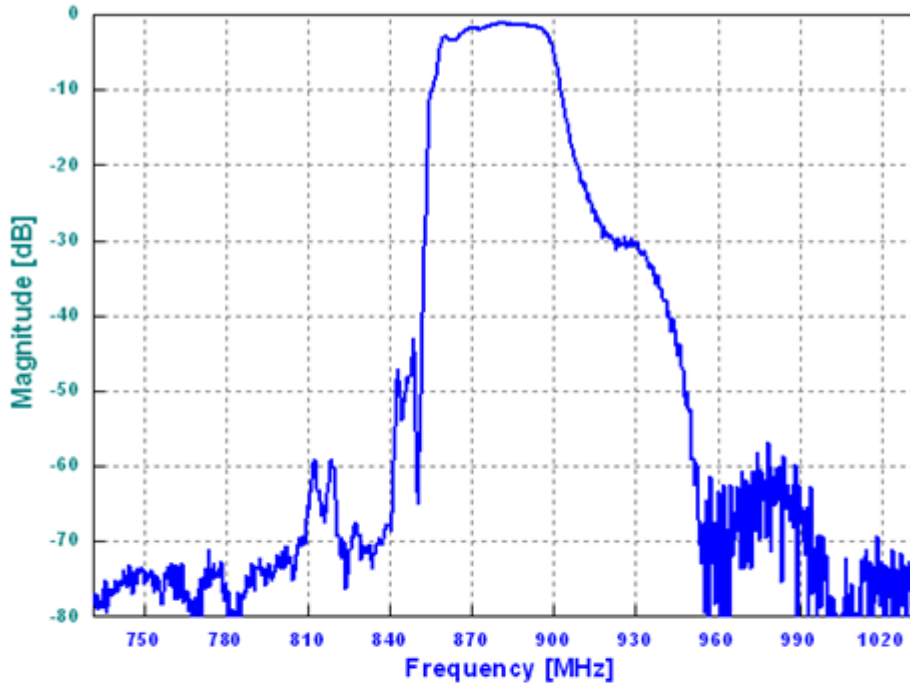


Source Impedance: 50  $\Omega$

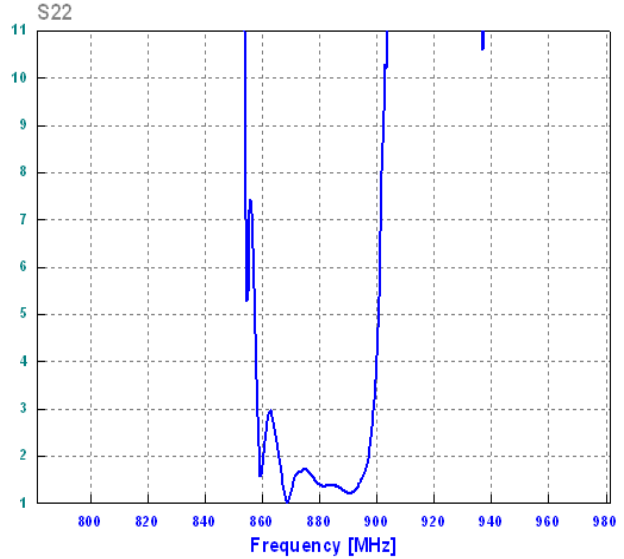
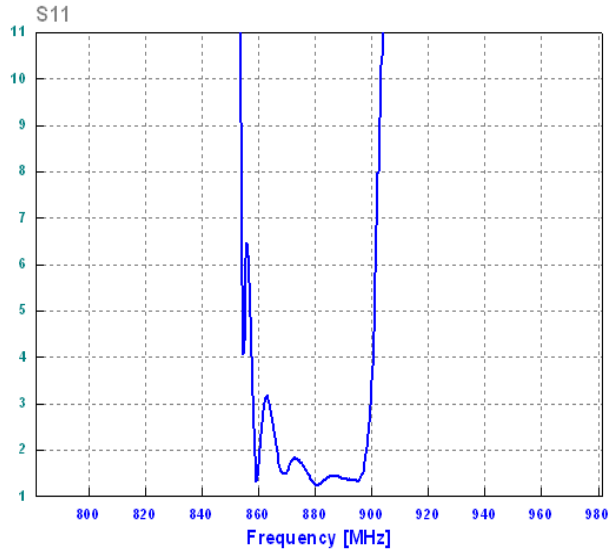
Load Impedance: 200  $\Omega$

## Frequency Characteristics

Frequency Response



## VSWR



## Smith Chart

