

- Remote Control, RF SAW Filter
- Revision0: January 2008

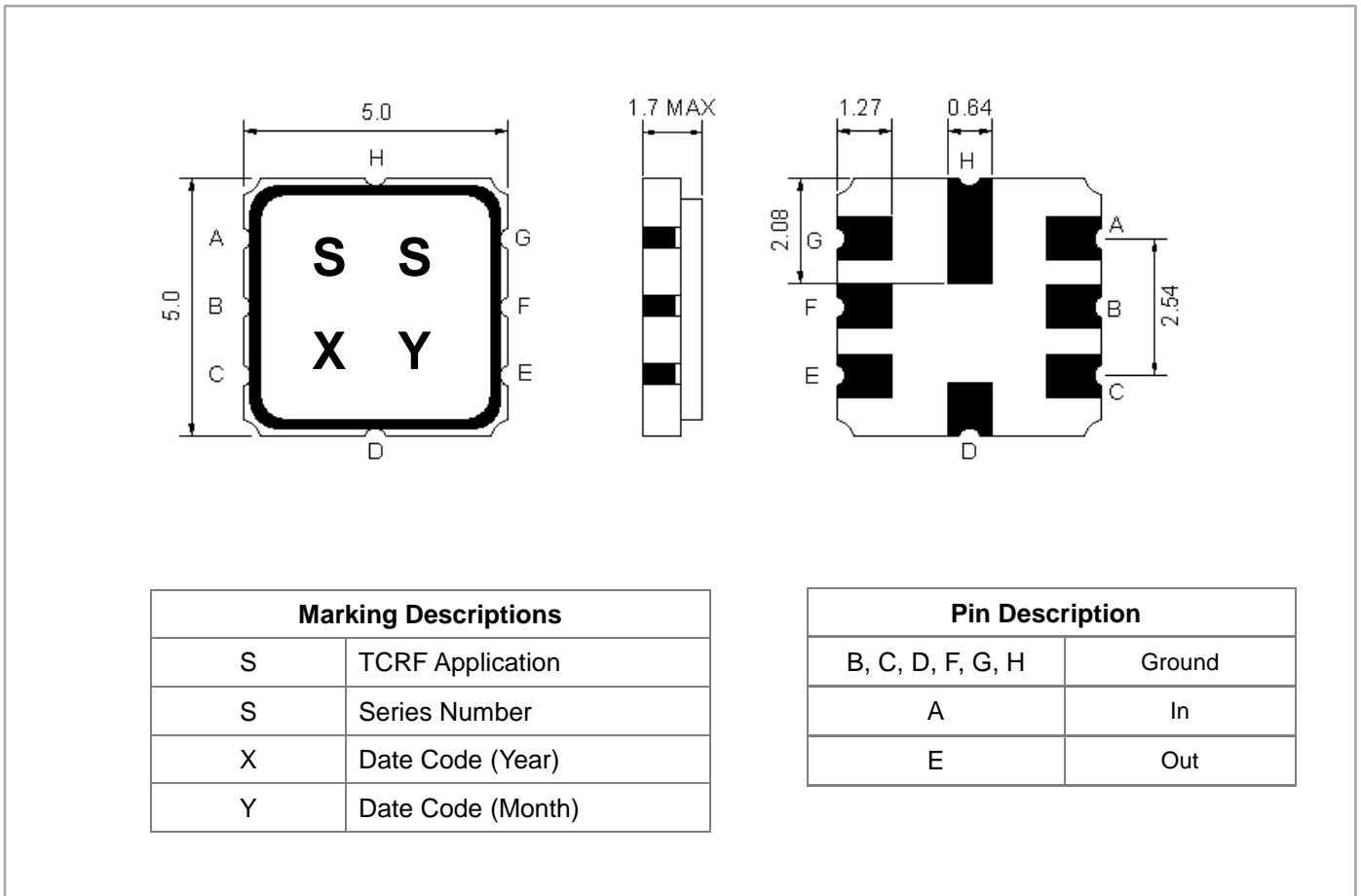
## Electrical Characteristics

MAXIMUM RATING				
PARAMETERS DESCRIPTION	UNIT	MINIMUM	TYPICAL	MAXIMUM
Operating Temperature Range	°C	-45	-	+85
Storage Temperature Range	°C	-45	-	+85
Maximum DC Voltage	V	-	-	0
Maximum Input Power	dBm	-	-	0
Source Impedance (single ended) <sup>(1)</sup>	Ω/pF	-	117//3.7	-
Load Impedance (single ended) <sup>(1)</sup>	Ω/pF	-	117//3.7	-
Package type & size	K			
Length x Width	mm <sup>2</sup>	-	5.0 x 5.0	-
Height	mm	-	-	1.7

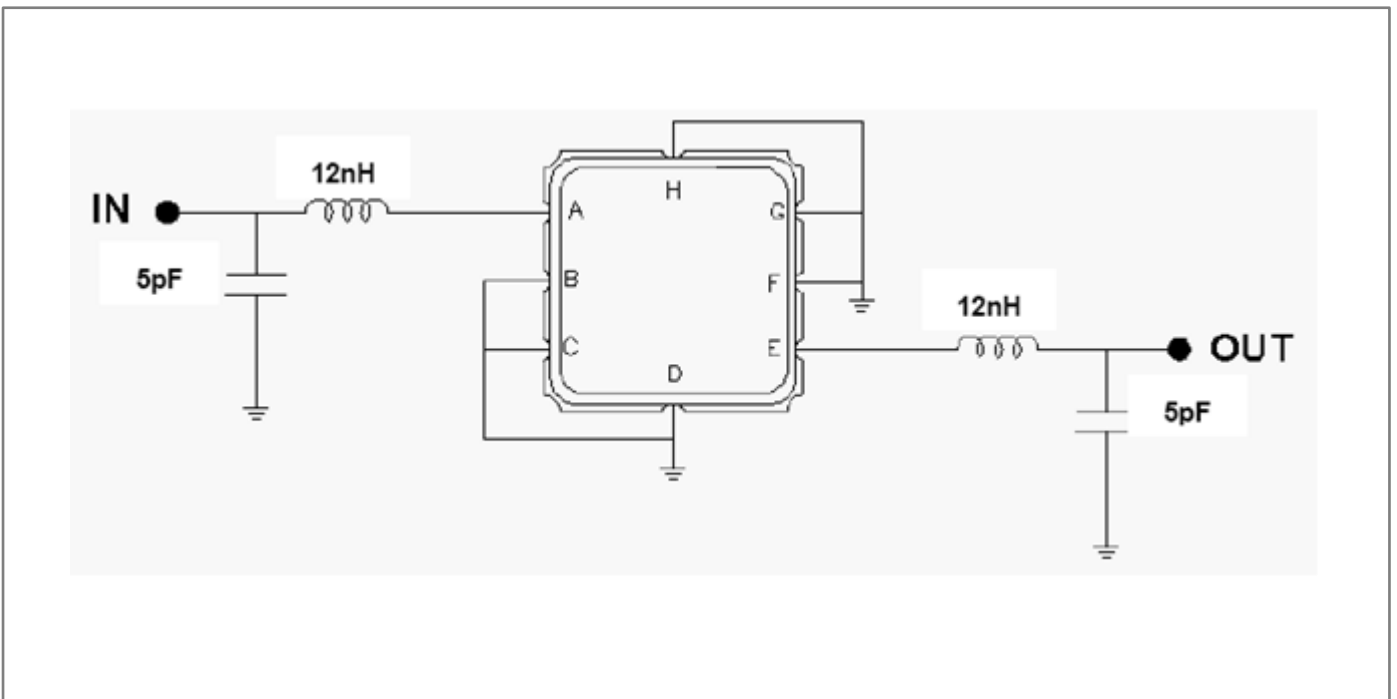
ELECTRICAL SPECIFICATION				
PARAMETERS DESCRIPTION	UNIT	MINIMUM	TYPICAL	MAXIMUM
Center Frequency (Fo)	MHz	-	868.69	-
Minimum Insertion Loss within 868.7 ~ 869.38 MHz	dB	-	3.3	4.7
Relative Passband :				
868.7 ~ 869.38 MHz	dB	-	1.5	3.0
867.92 ~ 869.46 MHz	dB	-	2.0	6.0
3dB Bandwidth	KHz	-	1900	-
Relative Attenuation:				
10.0 ~ 700.0 MHz	dB	50	55	-
700.0 ~830.0 MHz	dB	35	45	-
830.0 ~ 850.25 MHz	dB	32	40	-
850.25 ~ 865.27 MHz	dB	25	27	-
871.25 ~874.75 MHz	dB	11	15	-
874.75 ~ 883.25 MHz	dB	15	20	-
883.25 ~ 900.0 MHz	dB	30	32	-
900.0 ~ 1000.0 MHz	dB	35	45	-

**Notes:** (1) With Matching Network

## Package Dimensions



## Testing Environment



## Frequency Characteristics

**Frequency Response**

