

- Wireless, RF SAW Filter
- Revision 0:

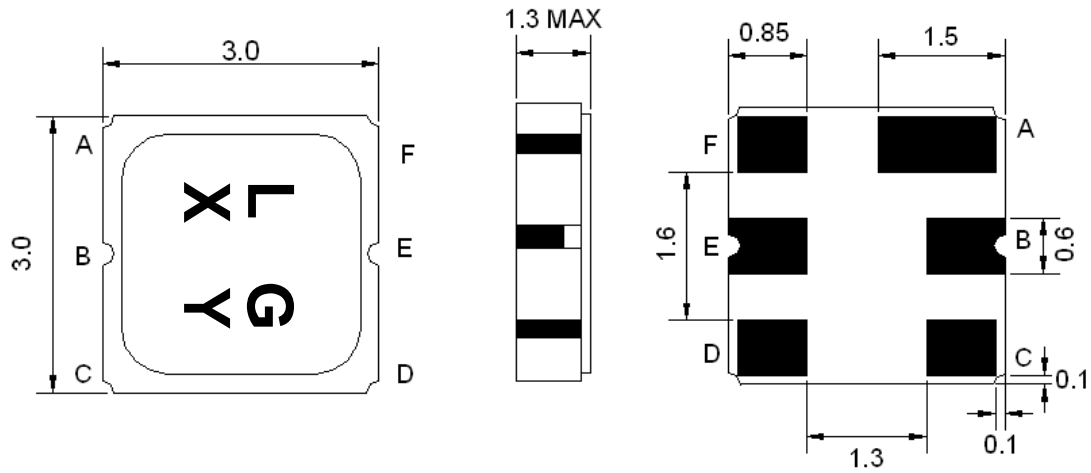
Electrical Characteristics

MAXIMUM RATING				
PARAMETERS DESCRIPTION	UNIT	MINIMUM	TYPICAL	MAXIMUM
Operating Temperature Range	°C	-30	-	+85
Storage Temperature Range	°C	-40	-	+85
Maximum DC Voltage	V	-	-	5
Maximum Input Power	dBm	-	-	15
Source Impedance (single ended) ⁽¹⁾	Ω	-	150	-
Load Impedance (single ended) ⁽¹⁾	Ω	-	150	-
Package type & size	M			
Length x Width	mm ²	-	3.0 x 3.0	-
Height	mm	-	-	1.3

ELECTRICAL SPECIFICATION				
PARAMETERS DESCRIPTION	UNIT	MINIMUM	TYPICAL	MAXIMUM
Center Frequency (Fo)	MHz	-	448.0	-
Insertion Loss within 446.0 ~ 450.0 MHz	dB	-	2.6	3.2
Amplitude Ripple within 446.0 ~ 450.0 MHz	dB _{p-p}	-	0.5	1.5
Attenuation:				
Fo-200.0 ~ Fo-60.0 MHz	dB	50	50	-
Fo+42.8 ~ Fo+200.0 MHz	dB	50	55	-

Notes : (1) With Matching Network (Ref. Testing Environment Circuit as shown below).

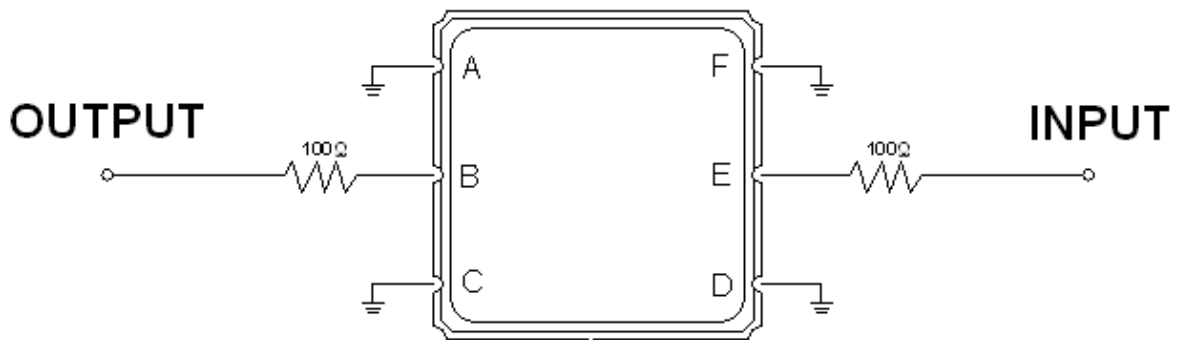
Package Dimensions



Marking Descriptions	
L	Wireless Application
G	Series Number
X	Date Code (Year)
Y	Date Code (Month)

Pin Description	
A, C, D, F	Ground
E	In
B	Out

Testing Environment



Source & Load Impedance: 50 Ω

Frequency Characteristics

