

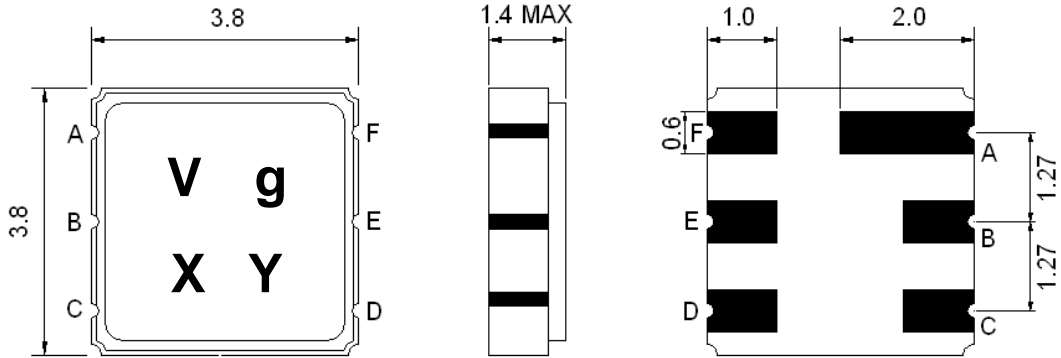
- Wireless, RF SAW Filter
- Revision 0: March 2005

Electrical Characteristics

MAXIMUM RATING				
PARAMETERS DESCRIPTION	UNIT	MINIMUM	TYPICAL	MAXIMUM
Operating Temperature Range	°C	-10	-	+60
Storage Temperature Range	°C	-40	-	+85
Maximum DC Voltage	V	-	-	0
Maximum Input Power	dBm	-	-	0
Source Impedance (single ended)	Ω	-	150	-
Load Impedance (single ended)	Ω	-	150	-
Package type & size	P			
Length x Width	mm ²	-	3.8 x 3.8	-
Height	mm	-	-	1.4

ELECTRICAL SPECIFICATION				
PARAMETERS DESCRIPTION	UNIT	MINIMUM	TYPICAL	MAXIMUM
Center Frequency (Fo)	MHz	-	446.0	-
Insertion Loss within 444 ~ 448 MHz	dB	-	1.5	3.0
Amplitude Ripple within 444 ~ 448 MHz	dB _{p-p}	-	0.8	2.0
Attenuation:				
DC~ Fo-42.8 MHz	dB	50	55	-
Fo+40 ~ Fo+200 MHz	dB	50	55	-
Terminating Impedance	Ω/pF	150/0		

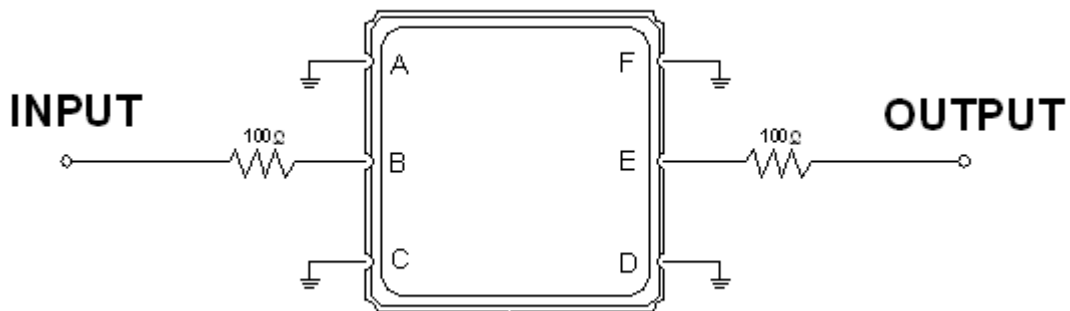
Package Dimensions



Marking Descriptions	
V	Wireless Application
g	Series Number
X	Date Code (Year)
Y	Date Code (Month)

Pin Description	
A, C, D, F	Ground
B	In
E	Out

Testing Environment



Source & Load Impedance: 50 Ω

Frequency Characteristics

Frequency Response

