

- Remote Control, RF SAW Filter
- Revision 0: July 2005

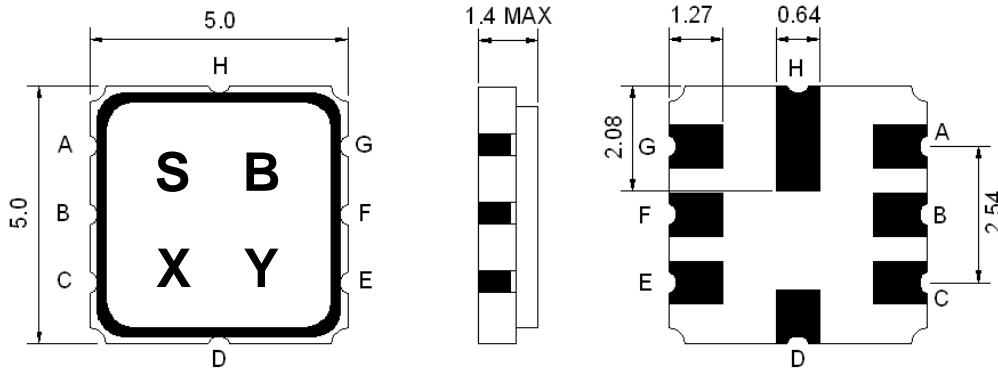
Electrical Characteristics

MAXIMUM RATING				
PARAMETERS DESCRIPTION	UNIT	MINIMUM	TYPICAL	MAXIMUM
Operating Temperature Range	°C	-45	-	+120
Storage Temperature Range	°C	-40	-	+85
Maximum DC Voltage	V	-	-	0
Maximum Input Power	dBm	-	-	10
Source Impedance (single ended) ⁽¹⁾	Ω	-	50	-
Load Impedance (single ended) ⁽¹⁾	Ω	-	50	-
Package type & size	K			
Length x Width	mm ²	-	5.0 x 5.0	-
Height	mm	-	-	1.4

ELECTRICAL SPECIFICATION				
PARAMETERS DESCRIPTION	UNIT	MINIMUM	TYPICAL	MAXIMUM
Center Frequency (Fo)	MHz	-	433.92	-
Insertion Loss within 433.8 ~ 434.12 MHz	dB	-	2.2	4.0
Relative Passband	-	-	-	-
433.76 ~ 434.08 MHz	dB	-	-	2.0
433.74 ~ 434.10 MHz	dB	-	-	3.0
433.68 ~ 434.16 MHz	dB	-	-	6.0
Relative Pass bandwidth (BW ₃)	KHz	670	720	-
Attenuation:				
10.0 ~ 414.0 MHz	dB	45	48	-
414.0 ~ 428.0 MHz	dB	40	43	-
428.0 ~ 432.92 MHz	dB	15	19	-
434.92 ~ 442.0 MHz	dB	10	14	-
442.0 ~ 550.0 MHz	dB	35	38	-
550.0 ~ 1000.0 MHz	dB	45	50	-
Turnover To	deg.C	-	25	-

Notes: (1) With Matching Network .

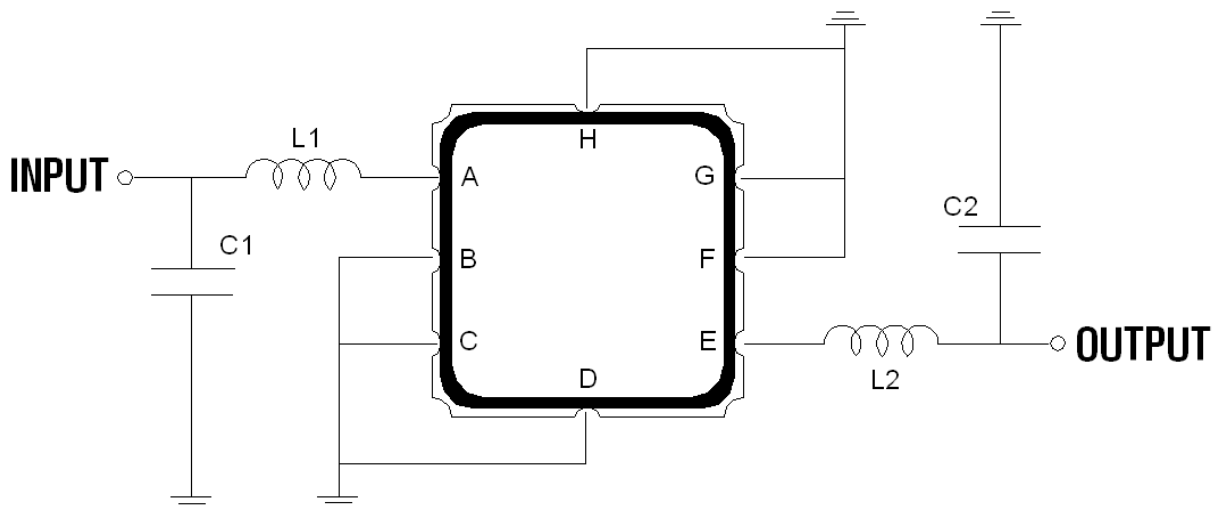
Package Dimensions



Marking Descriptions	
S	TCRF Application
B	Series Number
X	Date Code (Year)
Y	Date Code (Month)

Pin Description	
B, C, D, F, G, H	Ground
A	In
E	Out

Testing Environment



$L1=39\text{nH}$, $L2=39\text{nH}$
 $C1=3.0\text{pF}$, $C2=3.0\text{pF}$

Frequency Characteristics

Frequency Response

