

- Wireless, RF SAW Filter
- Revision 0: October 2003

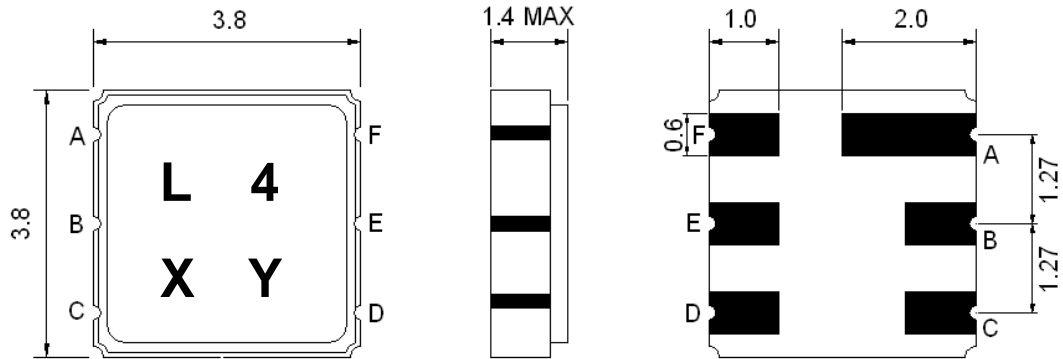
Electrical Characteristics

MAXIMUM RATING				
PARAMETERS DESCRIPTION	UNIT	MINIMUM	TYPICAL	MAXIMUM
Operating Temperature Range	°C	-30	-	+65
Storage Temperature Range	°C	-40	-	+85
Maximum DC Voltage	V	-	-	10
Maximum Input Power	dBm	-	-	0
Source Impedance (single ended) ⁽¹⁾	Ω	-	150	-
Load Impedance (single ended) ⁽¹⁾	Ω	-	150	-
Package type & size	P			
Length x Width	mm ²	-	3.8 x 3.8	-
Height	mm	-	-	1.4

ELECTRICAL SPECIFICATION				
PARAMETERS DESCRIPTION	UNIT	MINIMUM	TYPICAL	MAXIMUM
Center Frequency (Fo)	MHz	-	325.3	-
Insertion Loss within 322.0 ~ 328.6 MHz	dB	-	2.5	3.5
Amplitude Ripple within 322.0 ~ 328.6 MHz	dB _{p-p}	-	0.8	1.5
Attenuation:				
Fo-100.0 ~ Fo-39.5 MHz	dB	40	50	-
Fo+39.5 ~ Fo+100.0 MHz	dB	50	60	-

Notes: (1) With Matching Network (Ref. Testing Environment Circuit as shown below).
Those impedances could be modified with different impedance values and/or structures, if necessary.

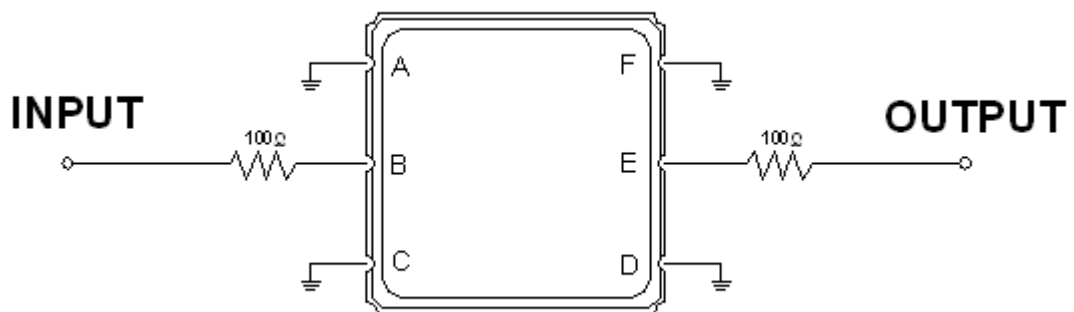
Package Dimensions



Marking Descriptions	
L	Wireless Application
4	Series Number
X	Date Code (Year)
Y	Date Code (Month)

Pin Description	
A, C, D, F	Ground
B	Input
E	Output

Testing Environment



Source & Load Impedance: 50 Ω

Frequency Characteristics

