

- Remote Control, RF SAW Filter
- Revision 0: January 2012

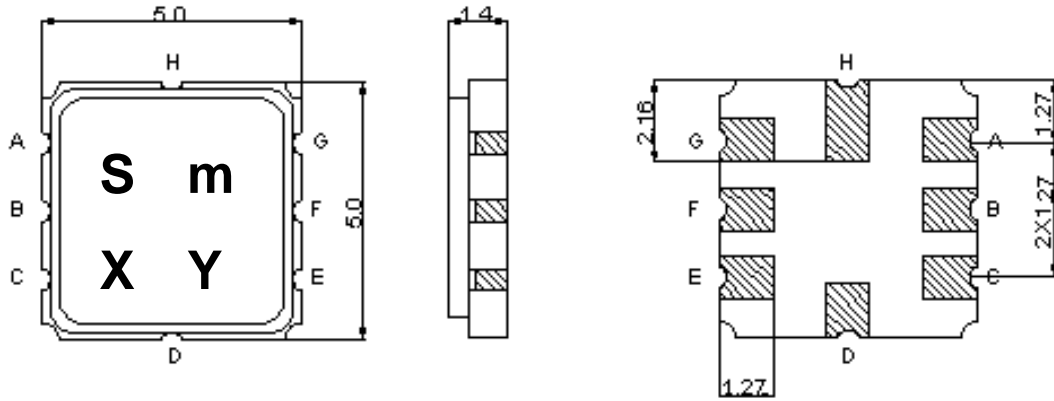
## Electrical Characteristics

MAXIMUM RATING				
PARAMETERS DESCRIPTION	UNIT	MINIMUM	TYPICAL	MAXIMUM
Operating Temperature Range	°C	-40	-	+85
Storage Temperature Range	°C	-40	-	+85
Maximum DC Voltage	V	-	-	12
Maximum Input Power	dBm	-	-	10
Source Impedance (single ended) <sup>(1)</sup>	Ω	-	50	-
Load Impedance (single ended) <sup>(1)</sup>	Ω	-	50	-
Package type & size	K			
Length x Width	mm <sup>2</sup>	-	5.0 x 5.0	-
Height	mm	-	-	1.4

ELECTRICAL SPECIFICATION				
PARAMETERS DESCRIPTION	UNIT	MINIMUM	TYPICAL	MAXIMUM
Center Frequency (Fo)	MHz	-	291.4	-
Insertion Loss within (Fo ±150KHz)	dB	-	2.8	4.0
Amplitude Ripple within (Fo ±150KHz)	dB <sub>p-p</sub>	-	0.8	1.5
Group Delay within (Fo ±150KHz)	nsec	-	700	1000
Absolute Delay at Fo	nsec	-	400	-
1dB Bandwidth	KHz	900	1350	-
3dB Bandwidth	KHz	-	1500	-
30dB Bandwidth	MHz	-	3.7	4.5
Relative Attenuation				
<231MHz	dB	50	65	-
>341MHz	dB	50	65	-

**Notes :** (1) With Matching Network .

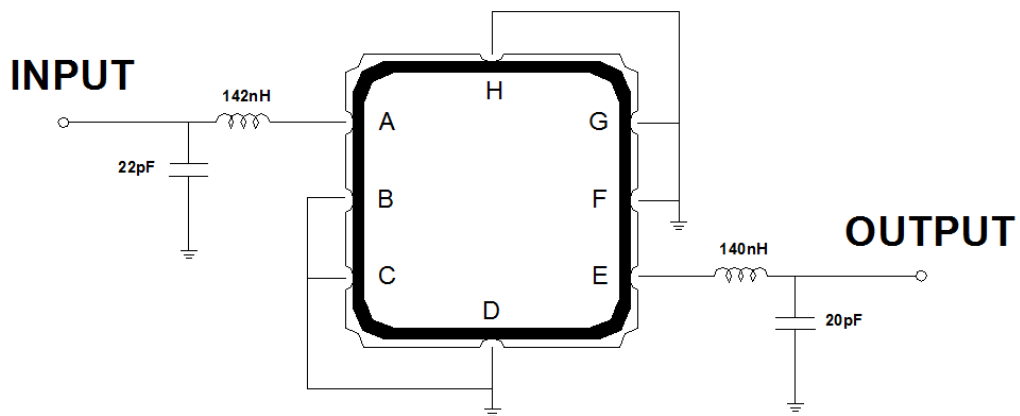
## Package Dimensions



Marking Descriptions	
S	TCRF Application
m	Series Number
X	Date Code (Year)
Y	Date Code (Month)

Pin Description	
B, C, D, F, G, H	Ground
A	Input
E	Output

## Testing Environment



**Matching value : Simulation value**

Source & Load Impedance: 50 Ω

## Frequency Characteristics

