

- WLAN, RF SAW Filter
- Revision 0: January 2012

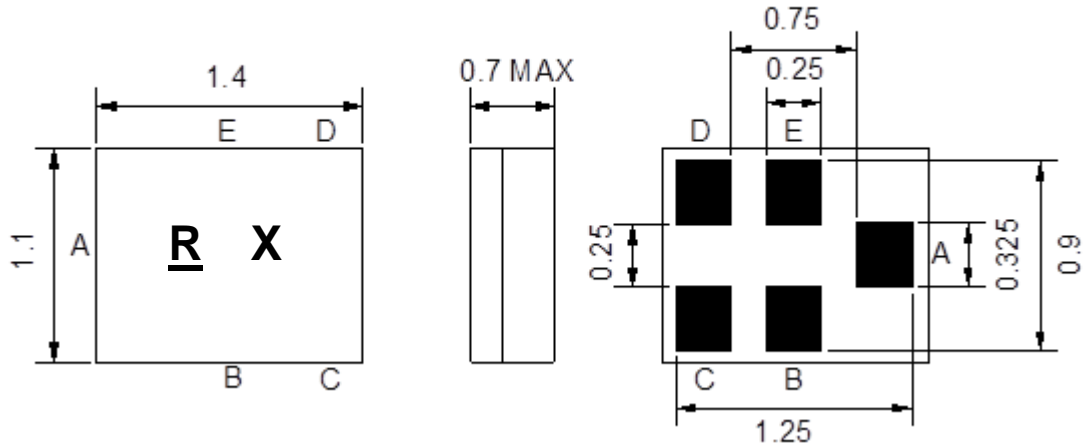
Electrical Characteristics

MAXIMUM RATING				
PARAMETERS DESCRIPTION	UNIT	MINIMUM	TYPICAL	MAXIMUM
Operating Temperature Range	°C	-30	-	+85
Storage Temperature Range	°C	-40	-	+85
Maximum DC Voltage	V	-	-	5
Maximum Input Power	dBm	-	-	10
Source Impedance (single ended) ⁽¹⁾	Ω	-	50	-
Load Impedance (single ended) ⁽¹⁾	Ω	-	50	-
Package type & size	Q1			
Length x Width	mm ²	-	1.4 x 1.1	-
Height	mm	-	-	0.7

ELECTRICAL SPECIFICATION				
PARAMETERS DESCRIPTION	UNIT	MINIMUM	TYPICAL	MAXIMUM
Center Frequency (Fo)	MHz	-	2450.0	-
Insertion Loss within 2400.0~2500.0 MHz	dB	-	3.2	4.8
Amplitude Ripple within 2400.0~2500.0 MHz	dB _{p-p}	-	1.3	2.7
Attenuation: (Reference from 0 dB)				
100.0 ~ 960.0 MHz	dB	25	32	-
960.0 ~ 1980.0 MHz	dB	25	31	-
2110.0 ~ 2170.0 MHz	dB	28	33	-
2750.0 ~ 4900.0 MHz	dB	20	17	-
4900.0 ~ 6000.0 MHz	dB	25	37	-
VSWR within 2400.0~2500.0 MHz	-	-	1.7	2.5

Notes: (1) With Matching Network (Ref. Testing Environment Circuit as shown below).

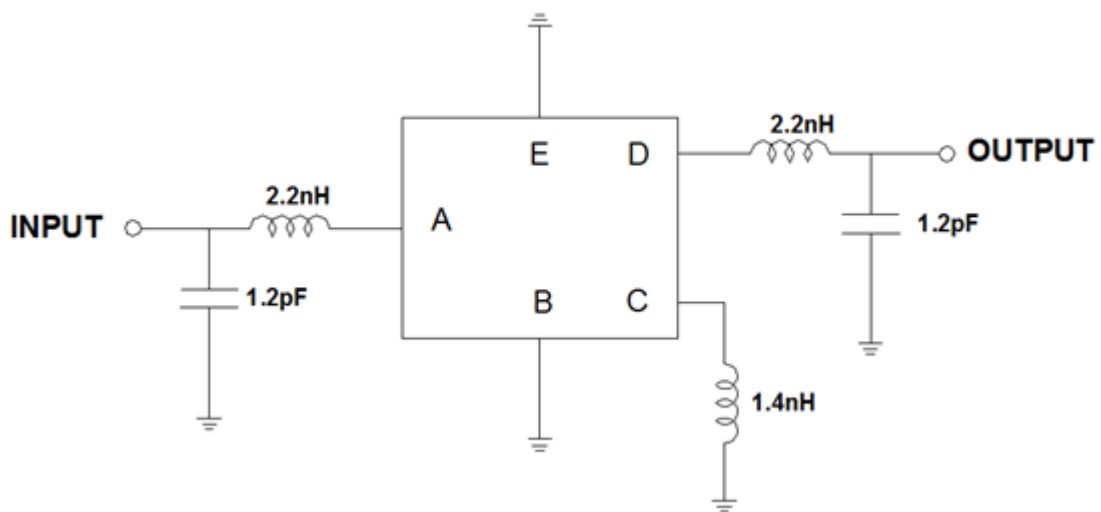
Package Dimensions



Marking Descriptions	
<u>R</u>	Series Number
X	Date Code (Year+Month)

Pin Description	
B, C, E	Ground
A	Input
D	Output

Testing Environment



Source & Load Impedance: 50 Ω