

- WLAN, RF SAW Filter
- Revision 0: October 2011

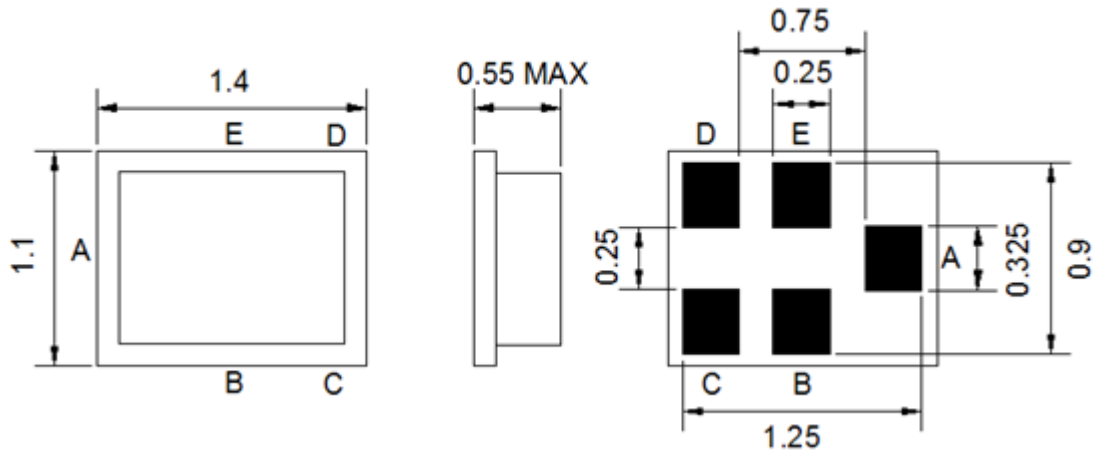
Electrical Characteristics

MAXIMUM RATING				
PARAMETERS DESCRIPTION	UNIT	MINIMUM	TYPICAL	MAXIMUM
Operating Temperature Range	°C	-30	-	+85
Storage Temperature Range	°C	-40	-	+85
Maximum DC Voltage	V	-	-	0
Maximum Input Power	dBm	-	-	10
Source Impedance (single ended) ⁽¹⁾	Ω	-	50	-
Load Impedance (single ended) ⁽¹⁾	Ω	-	50	-
Package type & size	Q2			
Length x Width	mm ²	-	1.4 x 1.1	-
Height	mm	-	-	0.55

ELECTRICAL SPECIFICATION				
PARAMETERS DESCRIPTION	UNIT	MINIMUM	TYPICAL	MAXIMUM
Center Frequency (Fo)	MHz	-	2450.0	-
Max.Insertion Loss within 2400.0~2500.0 MHz	dB	-	1.8	2.5
Amplitude Ripple within 2400.0~2500.0 MHz	dB _{p-p}	-	0.9	1.5
Attenuation:				
100.0 ~ 960.0 MHz	dB	20	27	-
960.0 ~ 1800.0 MHz	dB	20	25	-
1800.0 ~ 2100.0 MHz	dB	20	25	-
2100.0 ~ 2170.0 MHz	dB	25	30	-
2170.0 ~ 2250.0 MHz	dB	25	29	-
2650.0 ~ 2800.0 MHz	dB	25	31	-
2800.0 ~ 4000.0 MHz	dB	10	16	-
4000.0 ~ 6000.0 MHz	dB	15	20	-
VSWR within 2400.0~2500.0 MHz	-	-	1.5	2.0

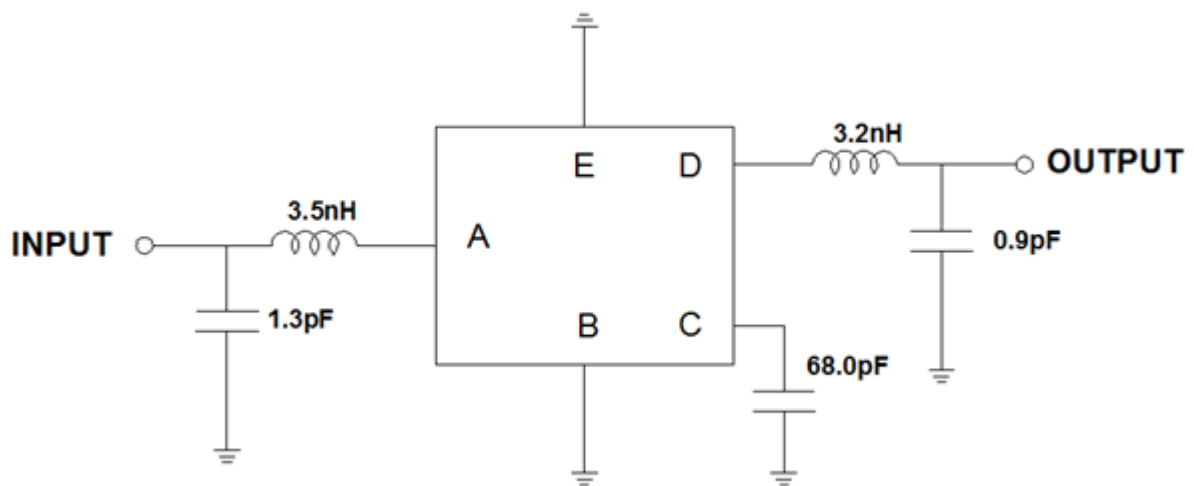
Notes: (1) With Matching Network (Ref. Testing Environment Circuit as shown below).

Package Dimensions



Pin Description	
B, C, E	Ground
A	Input
D	Output

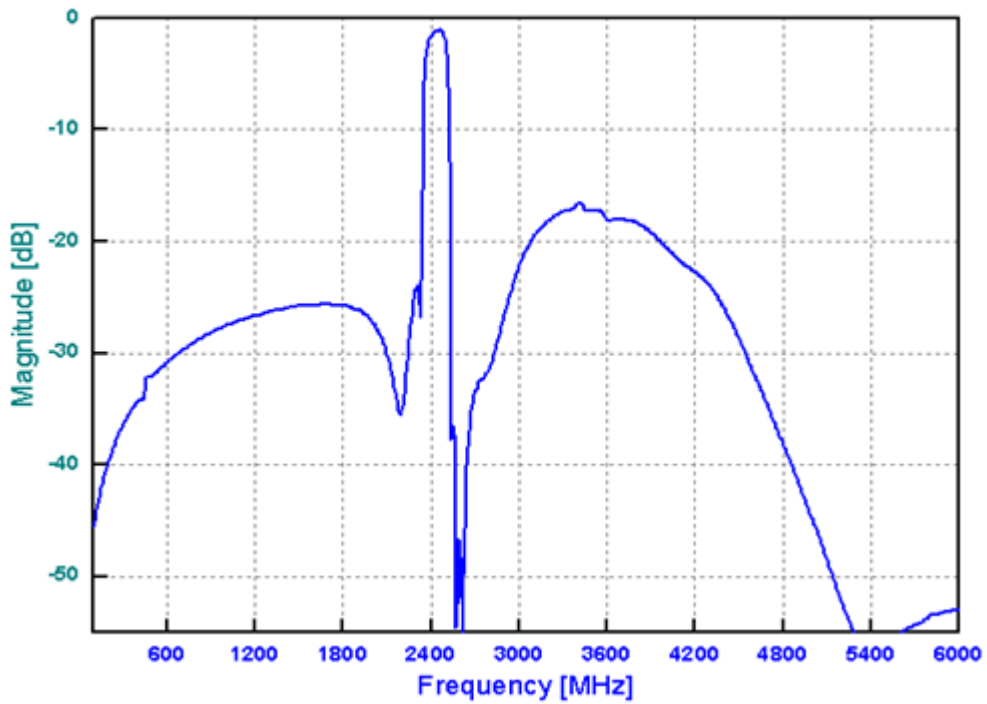
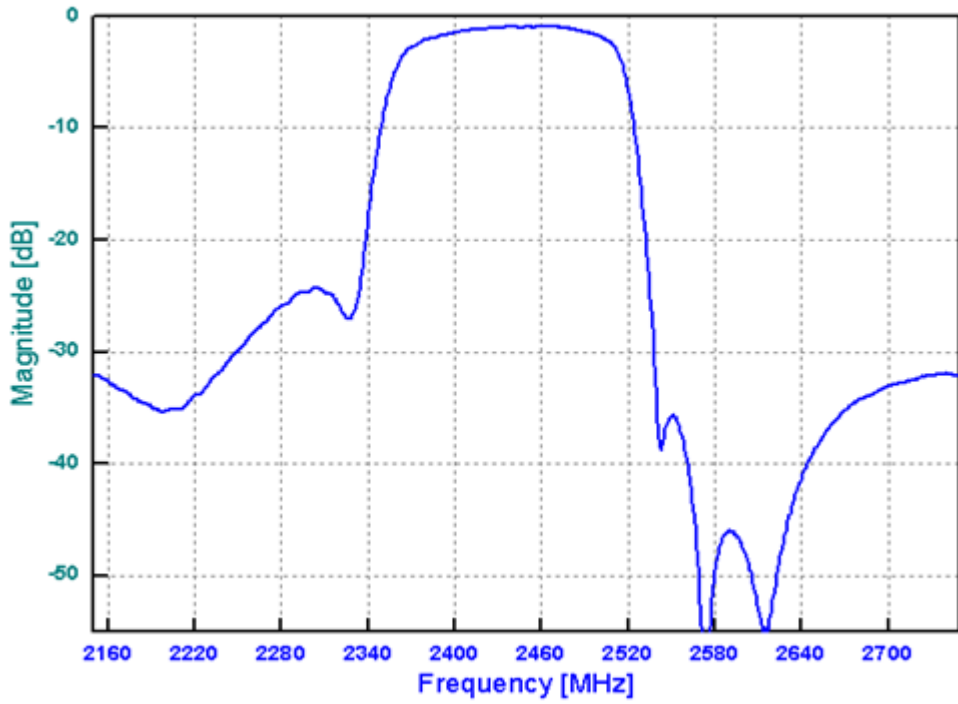
Testing Environment



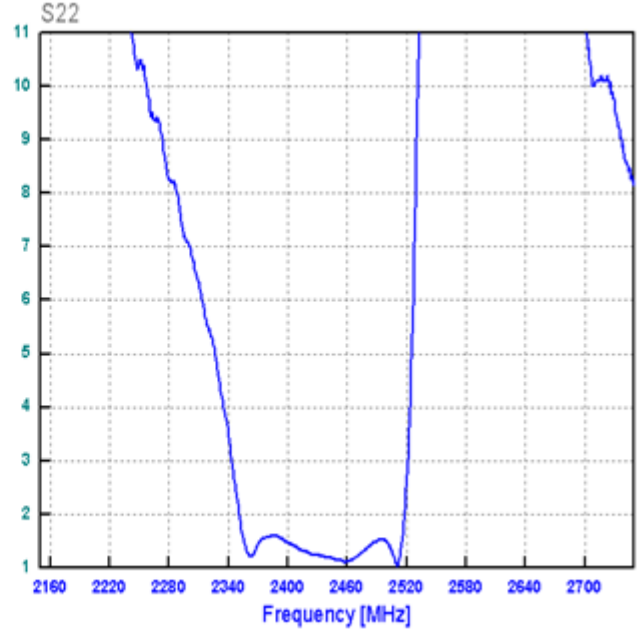
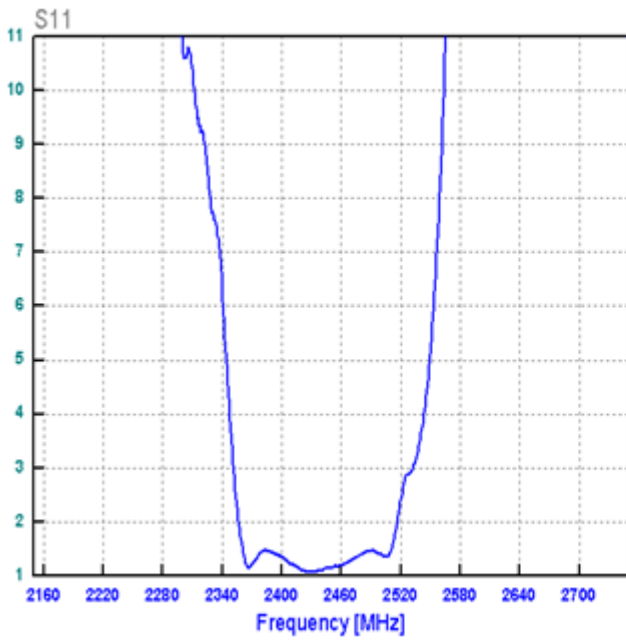
Source & Load Impedance: 50 Ω

Frequency Characteristics

Frequency Response



VSWR



Smith Chart

