

- PHS, IF SAW Filter
- Revision 0: December 2004

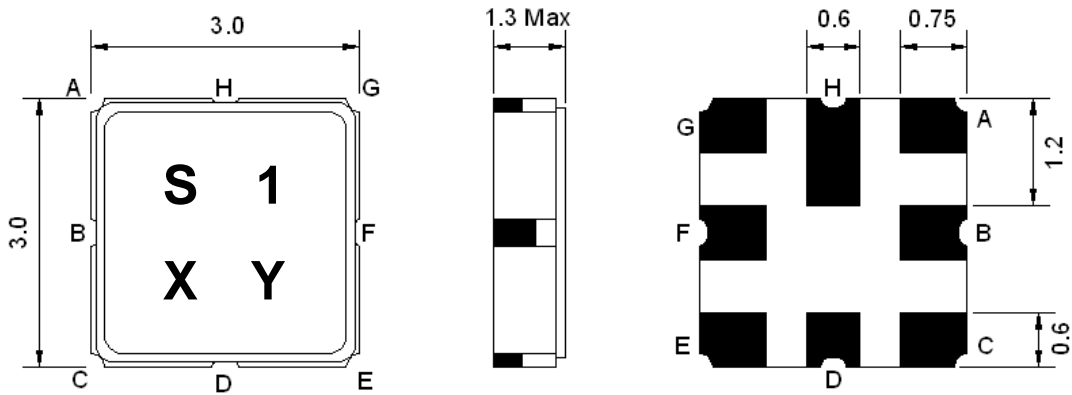
## Electrical Characteristics

MAXIMUM RATING				
PARAMETERS DESCRIPTION	UNIT	MINIMUM	TYPICAL	MAXIMUM
Operating Temperature Range	°C	-10	-	+60
Storage Temperature Range	°C	-40	-	+85
Maximum DC Voltage	V	-	-	0
Maximum Input Power	dBm	-	-	5
Source Impedance (single ended) <sup>(1)</sup>	Ω	-	50	-
Load Impedance (single ended) <sup>(1)</sup>	Ω	-	50	-
Package type & size	M1			
Length x Width	mm <sup>2</sup>	-	3.0 x 3.0	-
Height	mm	-	-	1.3

ELECTRICAL SPECIFICATION				
PARAMETERS DESCRIPTION	UNIT	MINIMUM	TYPICAL	MAXIMUM
Center Frequency (Fo)	MHz	-	243.95	-
Insertion Loss at Fo	dB	-	3.0	4.0
Amplitude Ripple within Fo±100 KHz	dB	-	0.4	1.0
Group Delay Ripple within Fo±100 KHz	μsec	-	0.4	1.0
<b>Attenuation:</b>				
Fo ± 600 KHz	dB	25	30	-
Fo ± 10.7 MHz	dB	40	60	-
Fo ± 21.4 MHz	dB	60	65	-

**Notes :** (1) With matching network(Ref. Testing Environment Circuit as shown below)

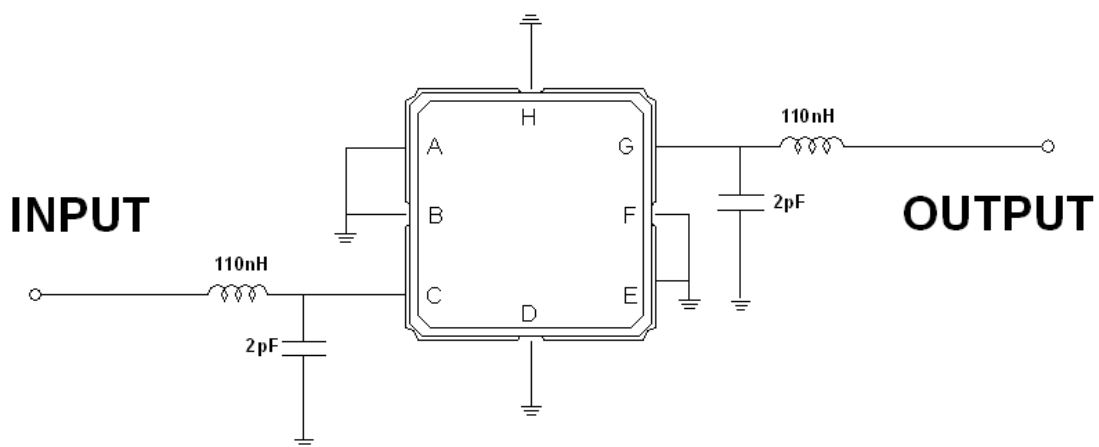
## Package Dimensions



Marking Descriptions	
S	PHS Application
1	Series Number
X	Date Code (Year)
Y	Date Code (Month)

Pin Description	
A, B, D, E, F, H	Ground
C	In
G	Out

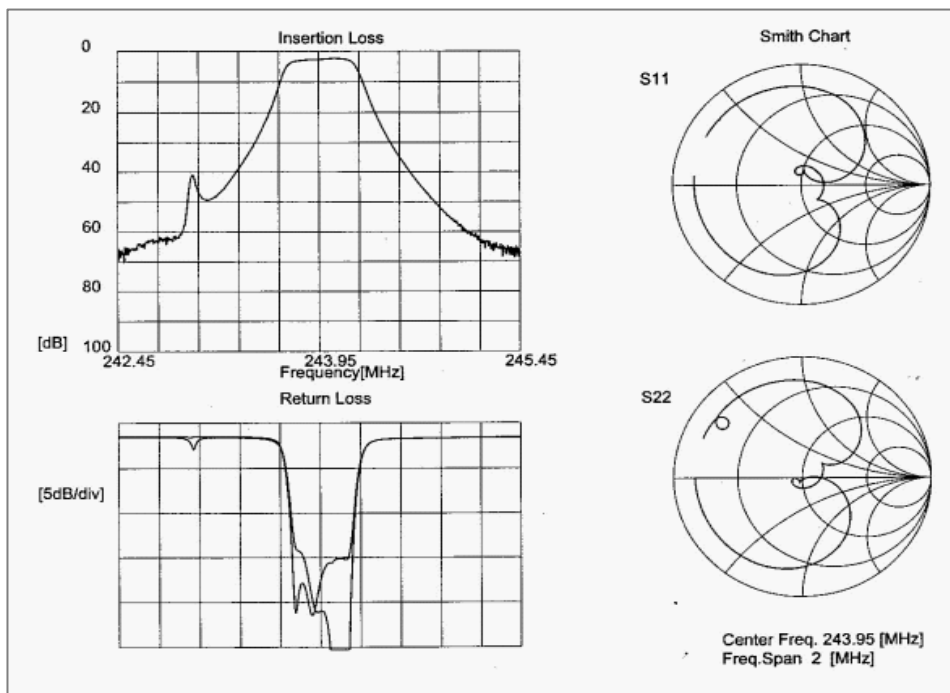
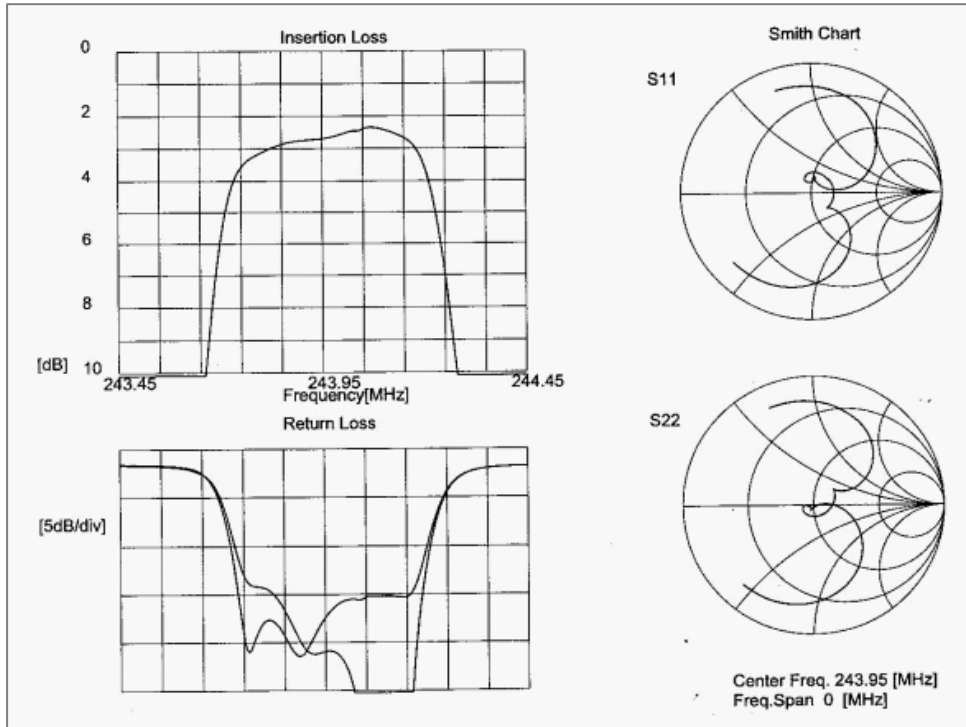
## Testing Environment

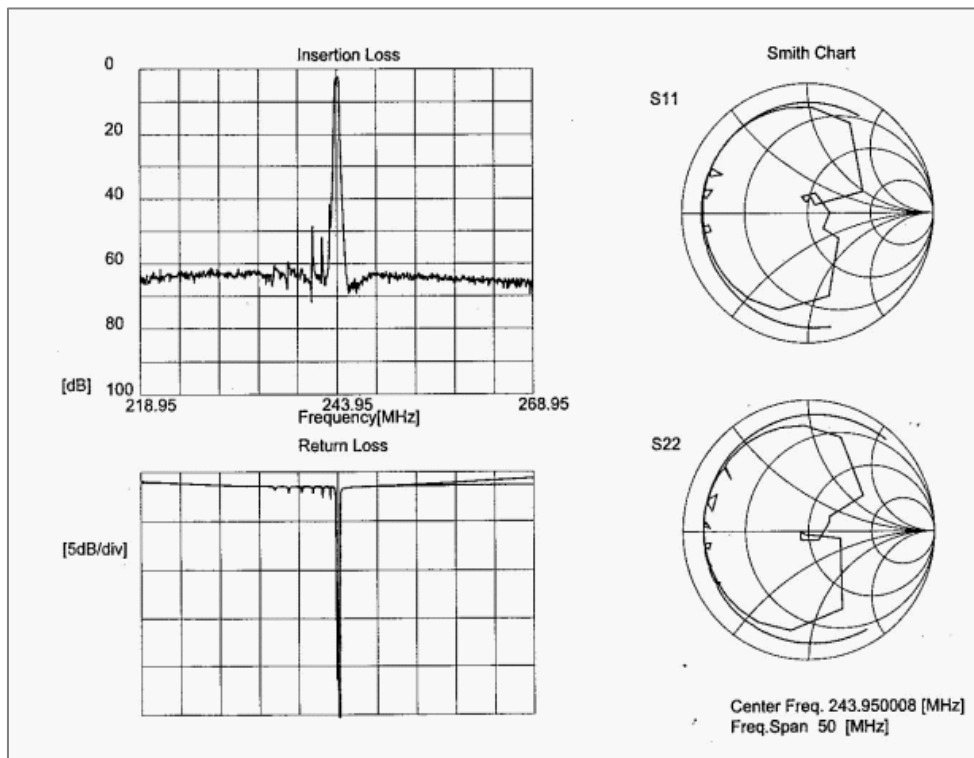
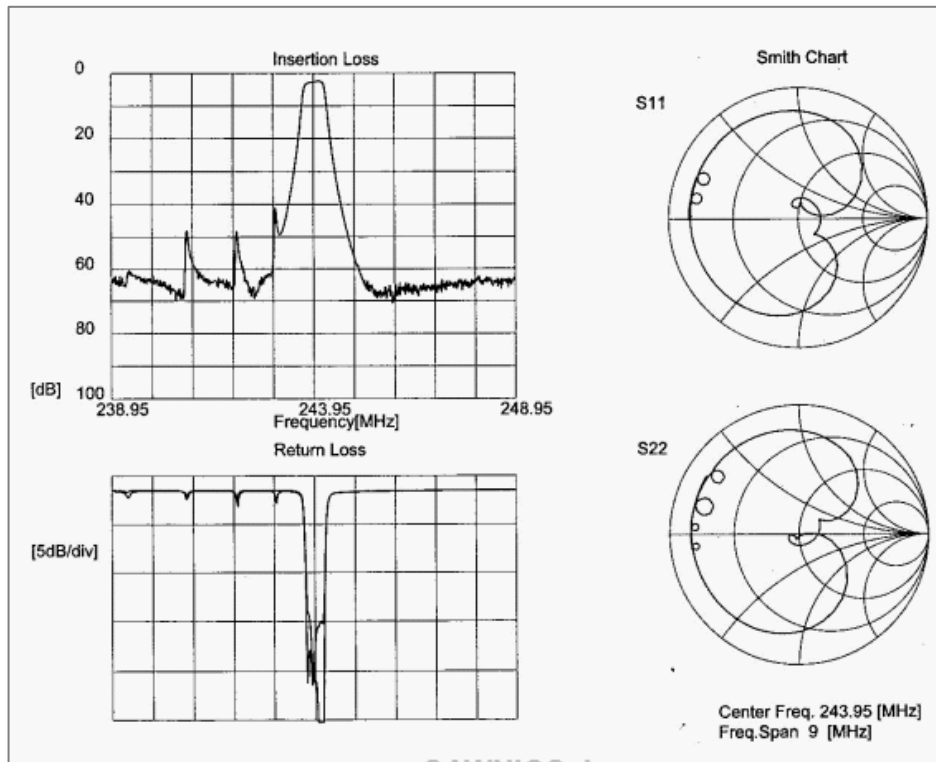


Source & Load Impedance: 50  $\Omega$

**Frequency Characteristics**

**Frequency Response**





**Group Play**

