

- TD-SCDMA, RF SAW Filter
- Revision 0: October 2011

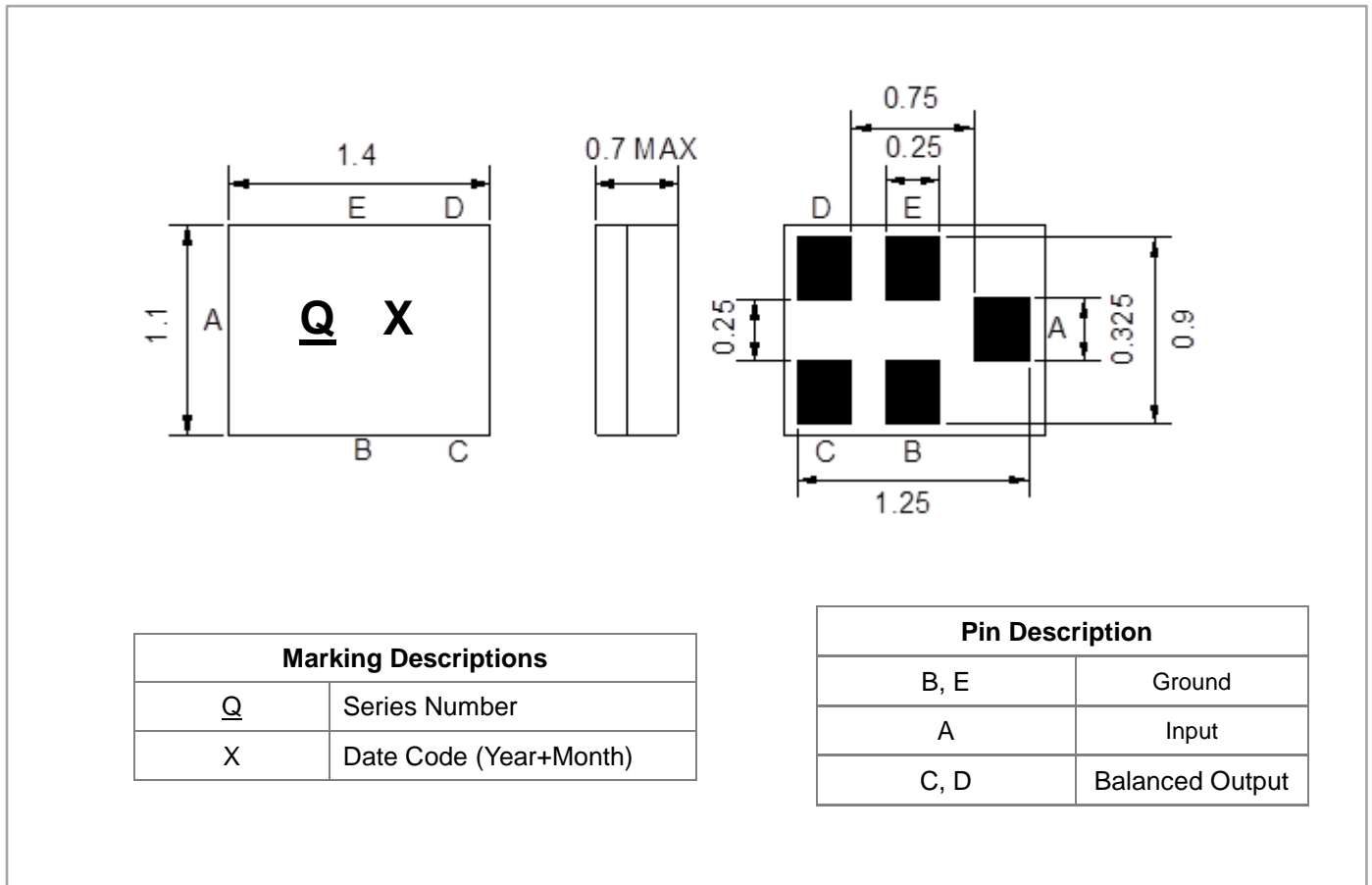
Electrical Characteristics

MAXIMUM RATING				
PARAMETERS DESCRIPTION	UNIT	MINIMUM	TYPICAL	MAXIMUM
Operating Temperature Range	°C	-30	-	+85
Storage Temperature Range	°C	-40	-	+85
Maximum DC Voltage	V	-	-	3
Maximum Input Power	dBm	-	-	10
Source Impedance (single ended)	Ω	-	50	-
Load Impedance (balanced)	Ω	-	200	-
Package type & size	Q1			
Length x Width	mm ²	-	1.4 x 1.1	-
Height	mm	-	-	0.7

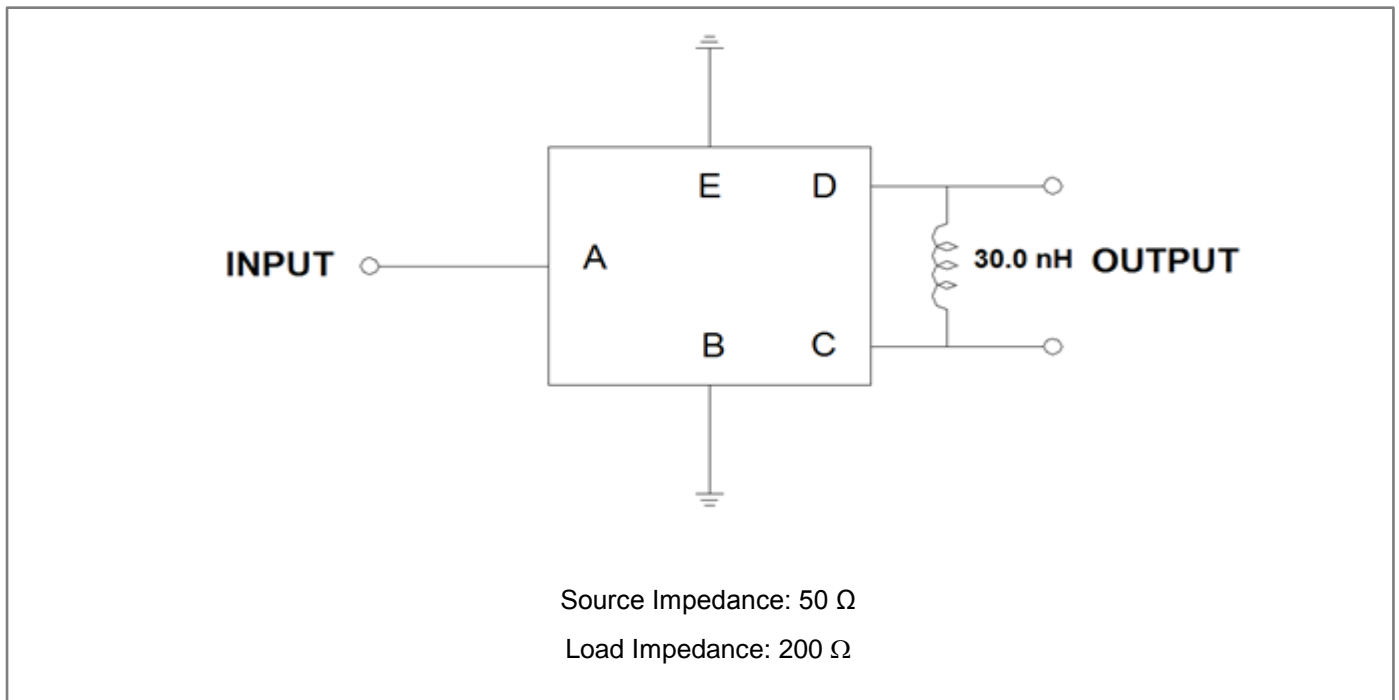
ELECTRICAL SPECIFICATION				
PARAMETERS DESCRIPTION	UNIT	MINIMUM	TYPICAL	MAXIMUM
Center Frequency (Fo)	MHz	-	1900.0	-
Insertion Loss within 1880.0 ~ 1920.0 MHz	dB	-	1.6	2.5
Amplitude Ripple within 1880.0 ~ 1920.0 MHz	dB _{p-p}	-	0.4	1.2
Amplitude Imbalance within 1880.0 ~ 1920.0 MHz	dB	-3.0	-0.4/1.9	3.0
Phase Imbalance within 1880.0 ~ 1920.0 MHz	deg	-12.0	-5.0/0.9	12.0
Attenuation:				
D.C ~ 1750.0 MHz	dB	35	42	-
1750.0 ~ 1805.0 MHz	dB	30	35	-
1805.0 ~ 1850.0 MHz	dB	20	27	-
1950.0 ~ 2000.0 MHz	dB	8	13	-
2000.0 ~ 2175.0 MHz	dB	20	27	-
2175.0 ~ 3000.0 MHz	dB	30	36	-
3000.0 ~ 6000.0 MHz	dB	30	37	-
VSWR within 1880.0 ~ 1920.0 MHz		-	1.85	2.5

Notes: (1) With Matching Network (Ref. Testing Environment Circuit as shown below).

Package Dimensions

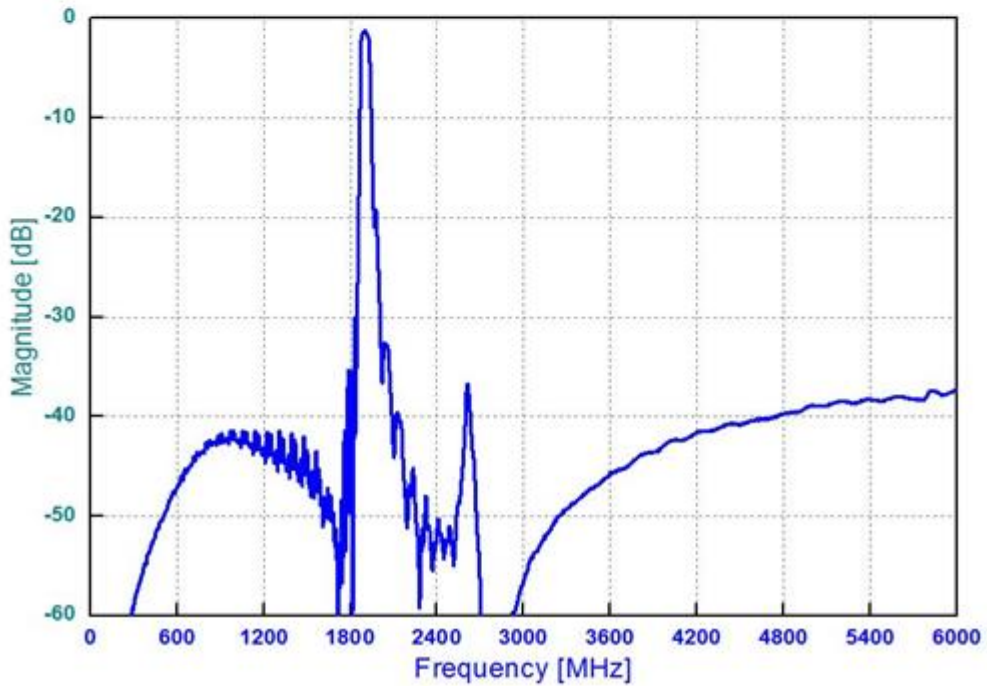
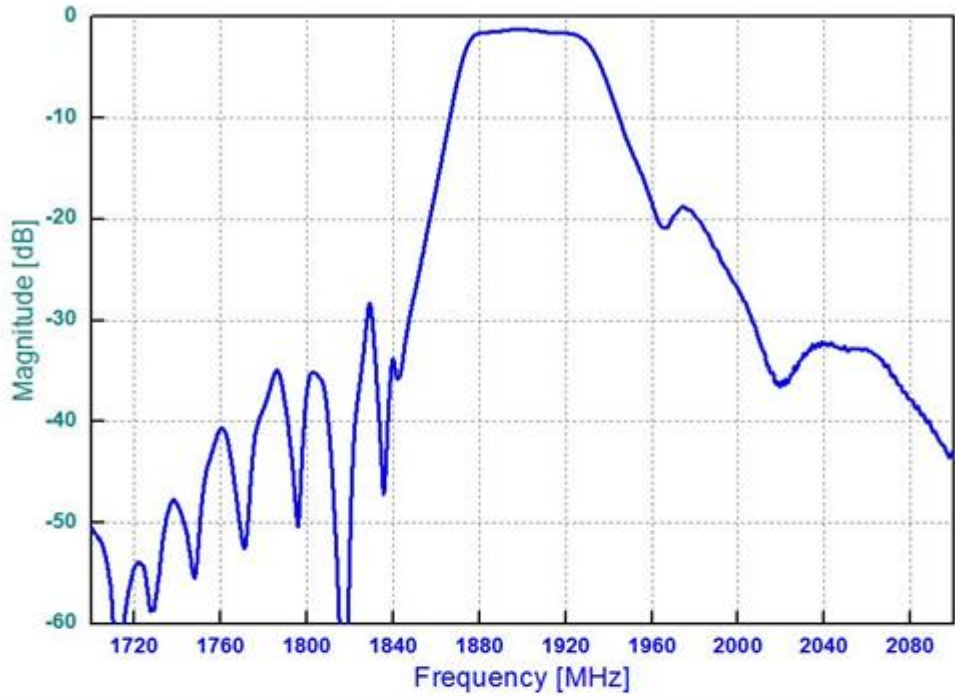


Testing Environment

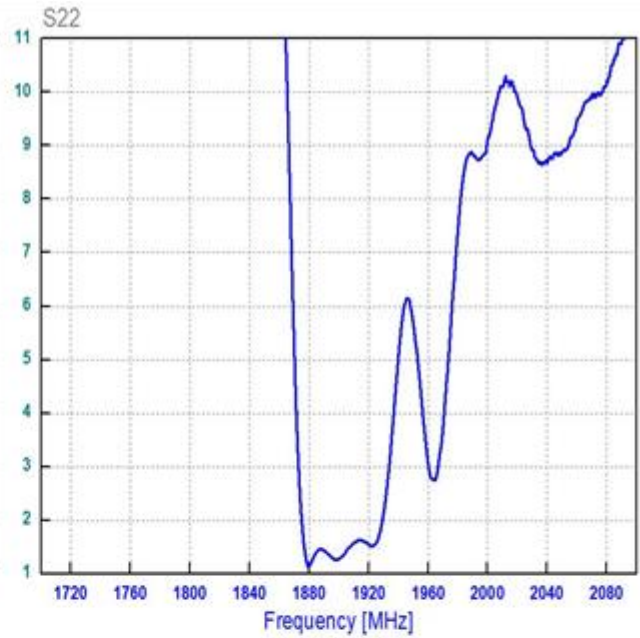
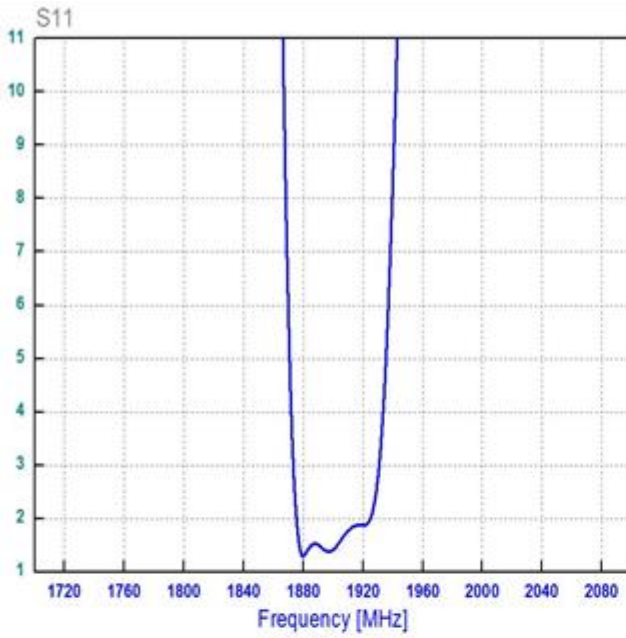


Frequency Characteristics

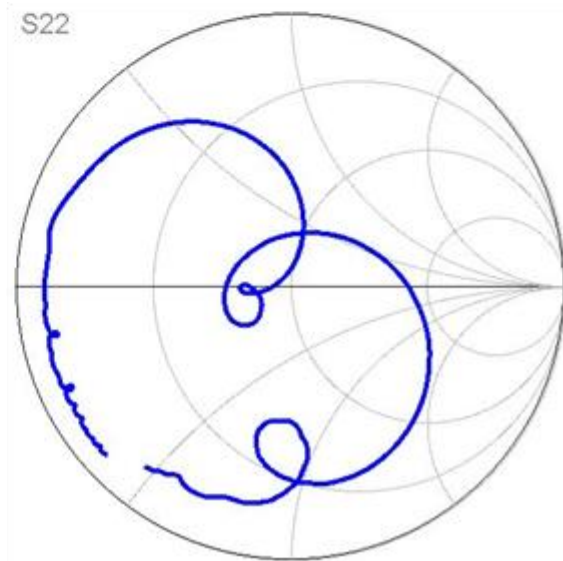
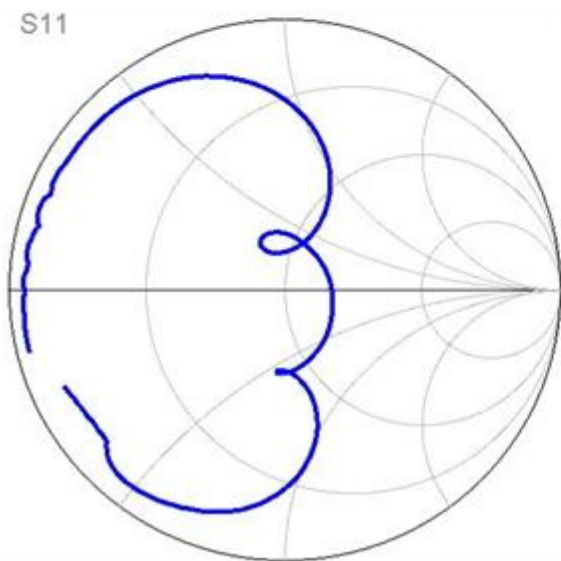
Frequency Response



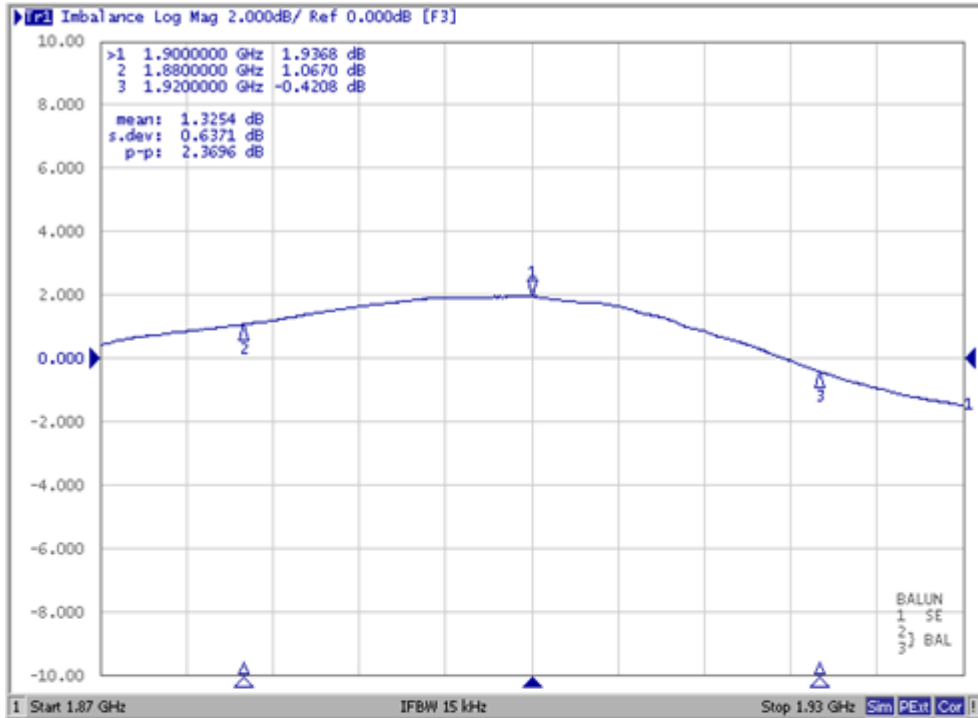
VSWR



Smith Chart



Amplitude Imbalance



Phase Imbalance

