

- AWS Tx, RF SAW Filter
- Revision 0: January 2008

## Electrical Characteristics

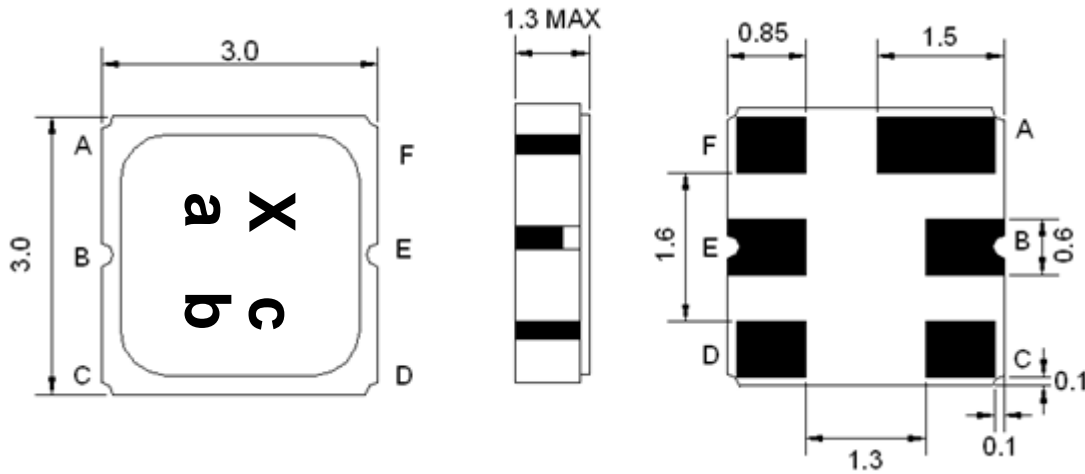
MAXIMUM RATING				
PARAMETERS DESCRIPTION	UNIT	MINIMUM	TYPICAL	MAXIMUM
Operating Temperature Range	°C	-20	-	+85
Storage Temperature Range	°C	-40	-	+85
Maximum DC Voltage	V	-	-	0
Maximum Input Power	dBm	-	-	10
Source Impedance (single ended) <sup>(1)</sup>	Ω	-	50	-
Load Impedance (single ended) <sup>(1)</sup>	Ω	-	50	-
Package type & size	M			
Length x Width	mm <sup>2</sup>	-	3.0 x 3.0	-
Height	mm	-	-	1.3

ELECTRICAL SPECIFICATION				
PARAMETERS DESCRIPTION	UNIT	MINIMUM	TYPICAL	MAXIMUM
Center Frequency (Fo)	MHz	-	1732.5	-
Insertion Loss within 1710.0 ~ 1755.0 MHz	dB	-	1.2	1.5
Amplitude Ripple within 1710.0 ~ 1755.0 MHz	dB <sub>p-p</sub>	-	0.5	0.75
<b>Attenuation:</b>				
D.C ~ 1650.0 MHz	dB	13	15	-
1800.0 ~ 2200.0 MHz	dB	15	17	-
VSWR within 1710.0 ~ 1755.0 MHz	dB	-	1.6	2.1

**Notes:** (1) With Matching Network (Ref. Testing Environment Circuit as shown below).

(2) Insertion Loss is excluding PCB Loss. (PCB Loss, 0.2dB)

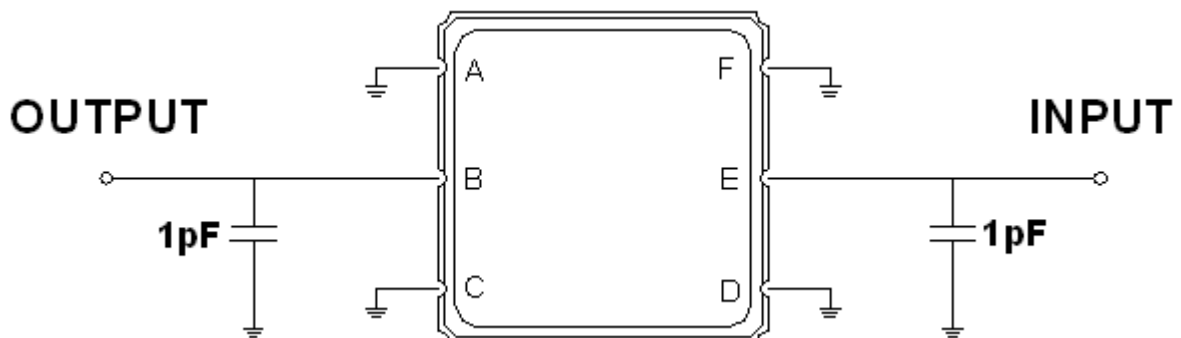
## Package Dimensions



Marking Descriptions	
X	AWS Application
c	Series Number
a	Date Code (Year)
b	Date Code (Month)

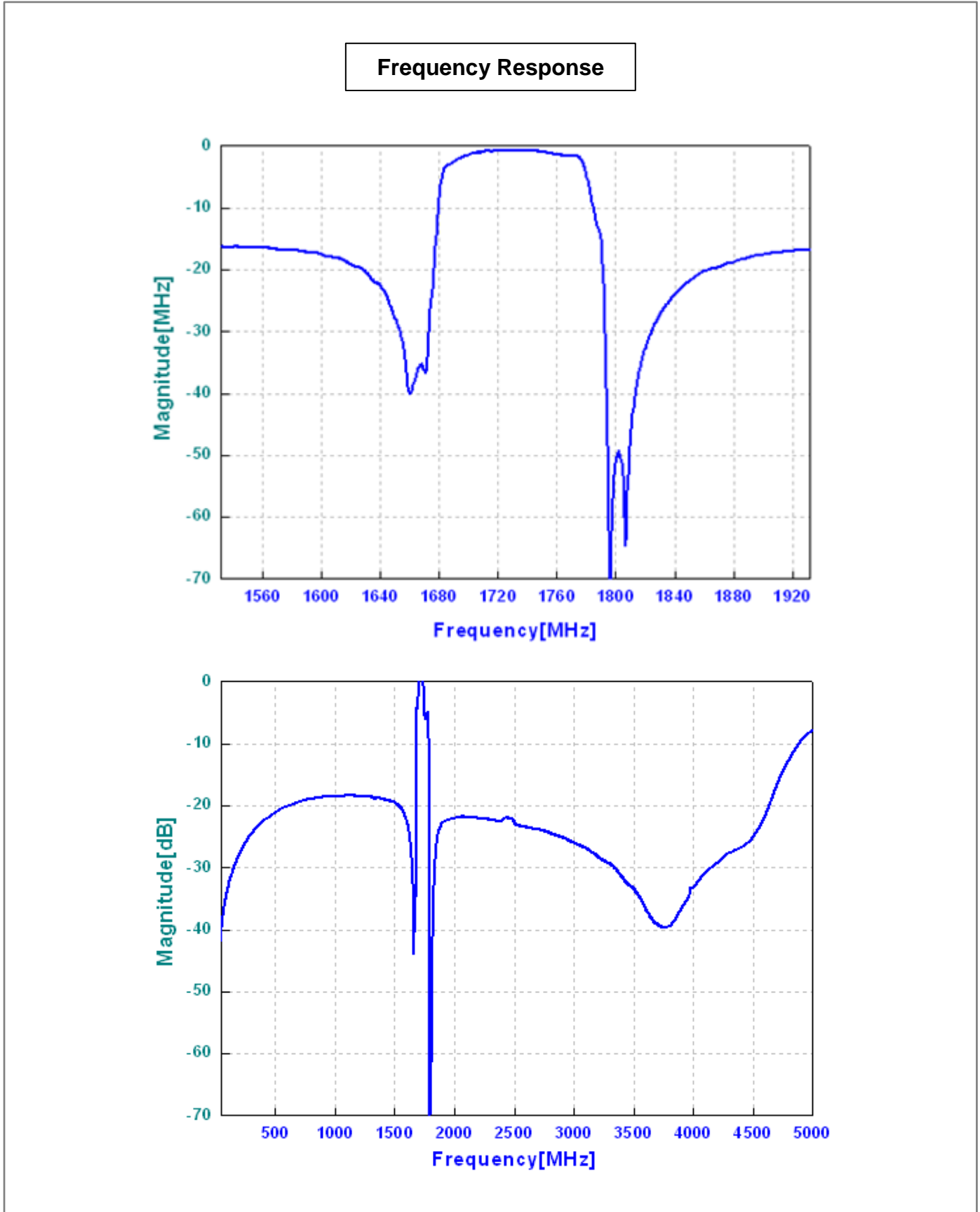
Pin Description	
A, C, D, F	Ground
E	In
B	Out

## Testing Environment

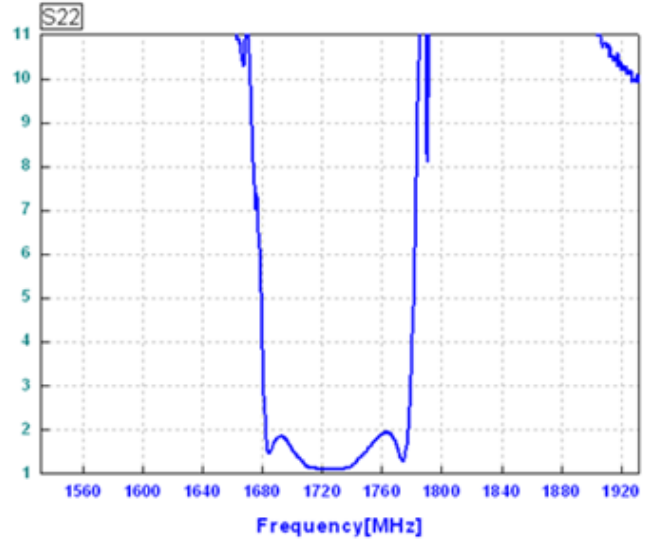
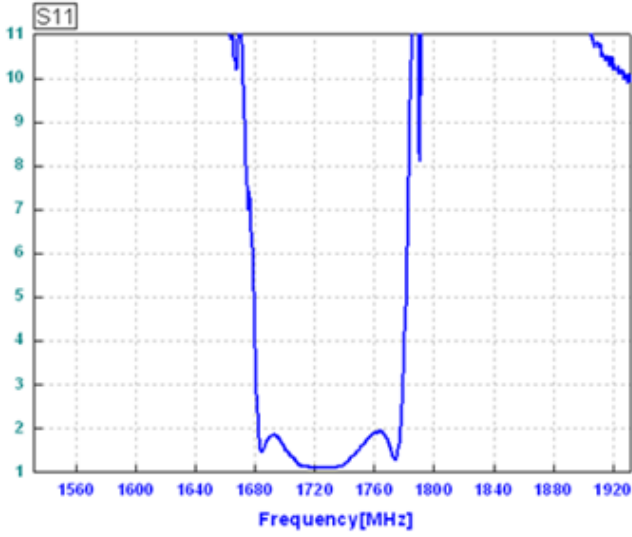


Source & Load Impedance: 50  $\Omega$

## Frequency Characteristics



**VSWR**



**Smith Chart**

