

- Wireless, RF SAW Filter
- Revision 0: July 2010

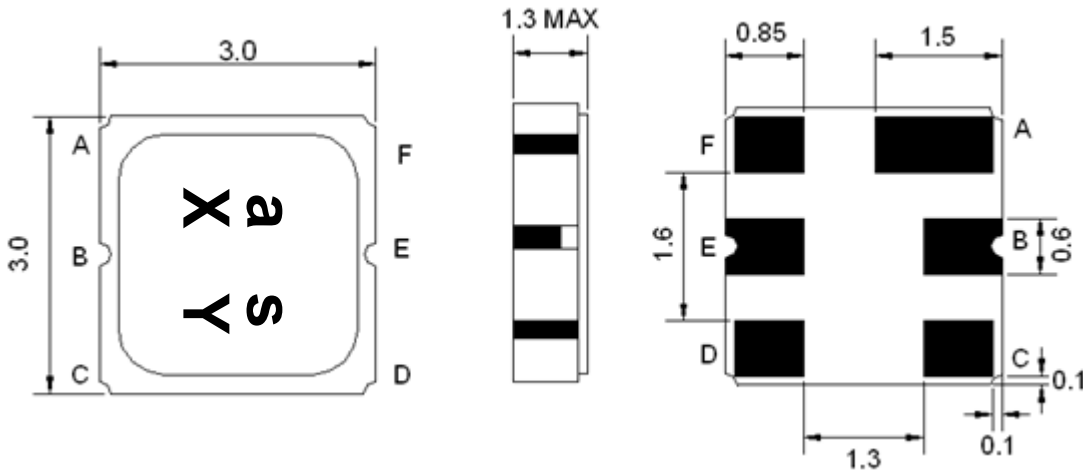
Electrical Characteristics

MAXIMUM RATING				
PARAMETERS DESCRIPTION	UNIT	MINIMUM	TYPICAL	MAXIMUM
Operating Temperature Range	°C	-40	-	+85
Storage Temperature Range	°C	-40	-	+85
Maximum DC Voltage	V	-	-	-
Maximum Input Power	dBm	-	-	10
Source Impedance (single ended) ⁽¹⁾	Ω	-	50	-
Load Impedance (single ended) ⁽¹⁾	Ω	-	50	-
Package type & size	M			
Length x Width	mm ²	-	3.0 x 3.0	-
Height	mm	-	-	1.3

ELECTRICAL SPECIFICATION				
PARAMETERS DESCRIPTION	UNIT	MINIMUM	TYPICAL	MAXIMUM
Center Frequency (Fo)	MHz	-	1587.1	-
Insertion Loss within 1559.6 ~ 1614.6 MHz	dB	-	3.0	3.8
Amplitude Ripple within 1559.6 ~ 1614.6 MHz	dB _{p-p}	-	0.8	1.8
Group Delay Variation within 1559.6 ~ 1614.6 MHz	ns _{p-p}	-	8	30
Attenuation:				
1300.0 ~ 1435.0 MHz	dB	20	24	-
1435.0 ~ 1525.0 MHz	dB	20	23	-
1653.0 ~ 1743.0 MHz	dB	20	23	-
1743.0 ~ 1887.0 MHz	dB	15	19	-

Notes: (1) With Matching Network

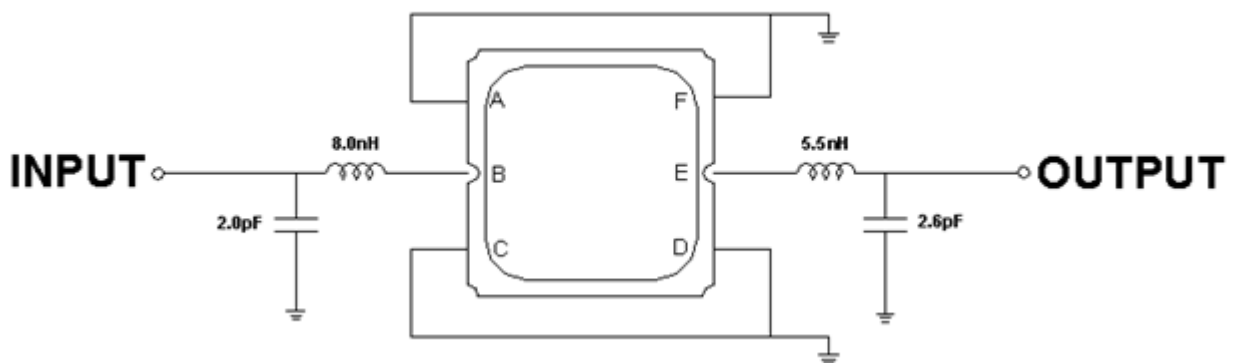
Package Dimensions



Marking Descriptions	
a	Wireless Application
s	Series Number
X	Date Code (Year)
Y	Date Code (Month)

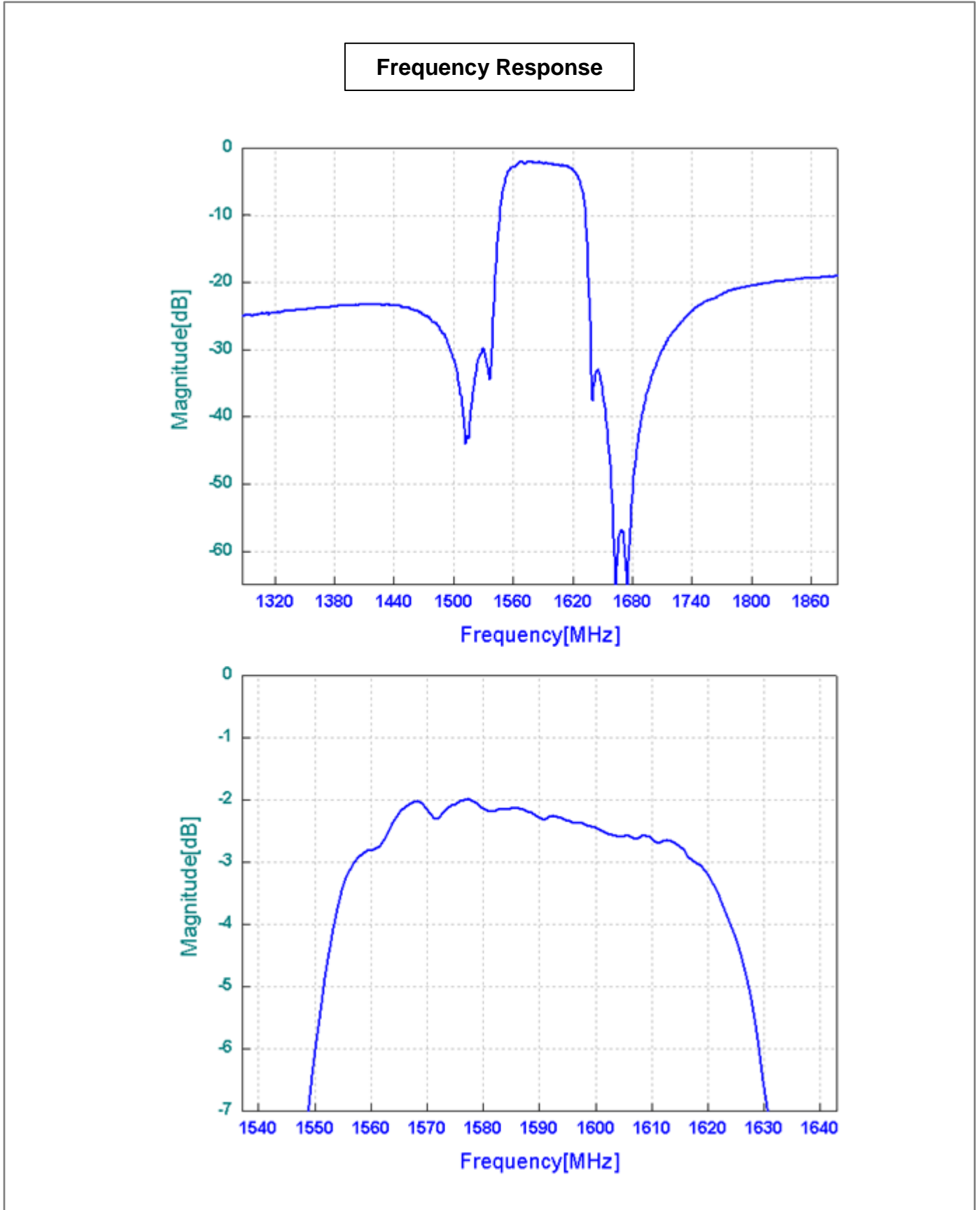
Pin Description	
A, C, D, F	Ground
B	In
E	Out

Testing Environment

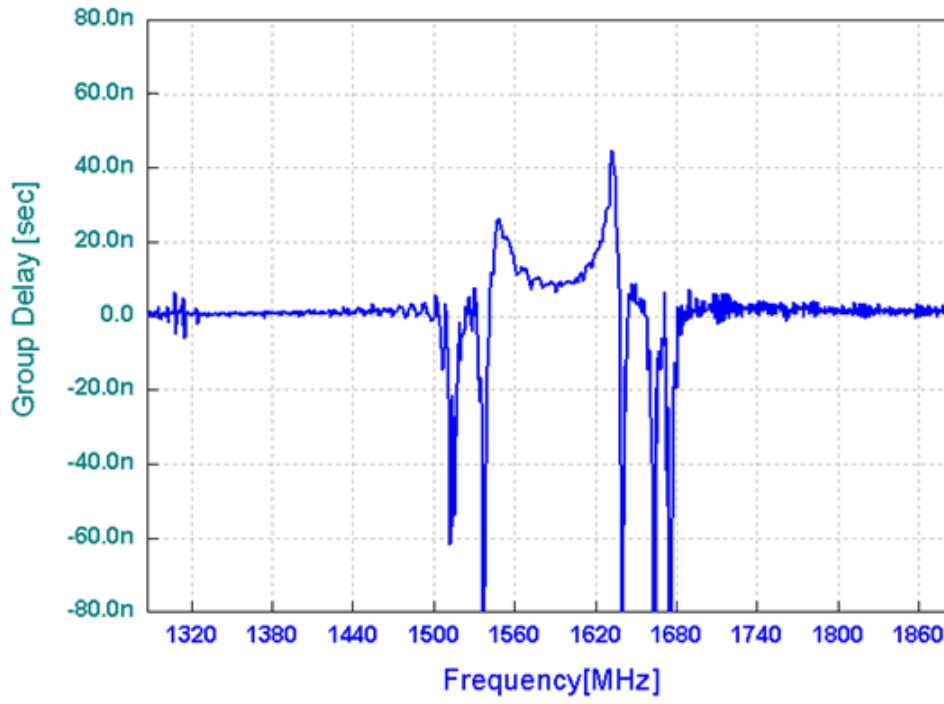


Source & Load Impedance: 50 Ω

Frequency Characteristics



Group delay



Smith Chart

