

- Wireless, RF SAW Filter
- Revision 0: July 2012

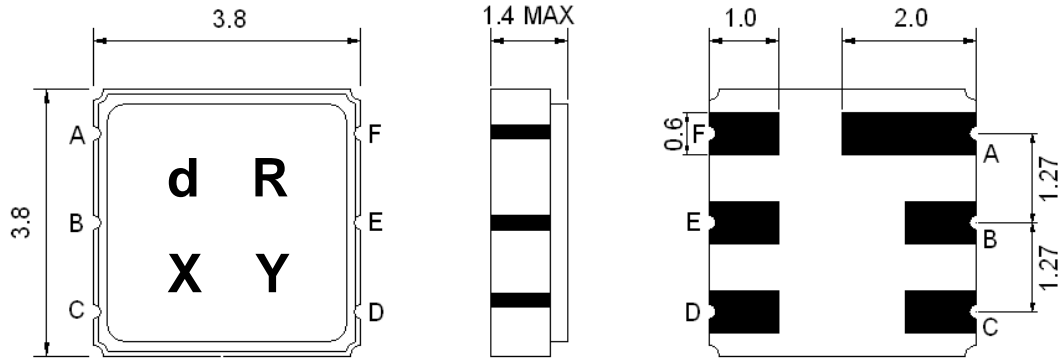
Electrical Characteristics

MAXIMUM RATING				
PARAMETERS DESCRIPTION	UNIT	MINIMUM	TYPICAL	MAXIMUM
Operating Temperature Range	°C	-40	-	+85
Storage Temperature Range	°C	-40	-	+85
Maximum DC Voltage	V	-	-	-
Maximum Input Power	dBm	-	-	10
Source Impedance (single ended) ⁽¹⁾	Ω	-	50	-
Load Impedance (single ended) ⁽¹⁾	Ω	-	50	-
Package type & size	P			
Length x Width	mm ²	-	3.8 x 3.8	-
Height	mm	-	-	1.4

ELECTRICAL SPECIFICATION				
PARAMETERS DESCRIPTION	UNIT	MINIMUM	TYPICAL	MAXIMUM
Center Frequency (Fo)	MHz	-	1246.0	-
Insertion Loss within 1223.5 ~ 1268.5 MHz	dB	-	2.1	4.0
Amplitude Ripple within 1223.5 ~ 1268.5 MHz	dB _{p-p}	-	1.3	2.3
Attenuation:				
950.0 ~ 1100.0 MHz	dB	20	24	-
1100.0 ~ 1190.0 MHz	dB	20	24	-
1309.0 ~ 1399.0 MHz	dB	20	23	-
1399.0 ~ 1534.0 MHz	dB	17	21	-

Notes: (1) With Matching Network

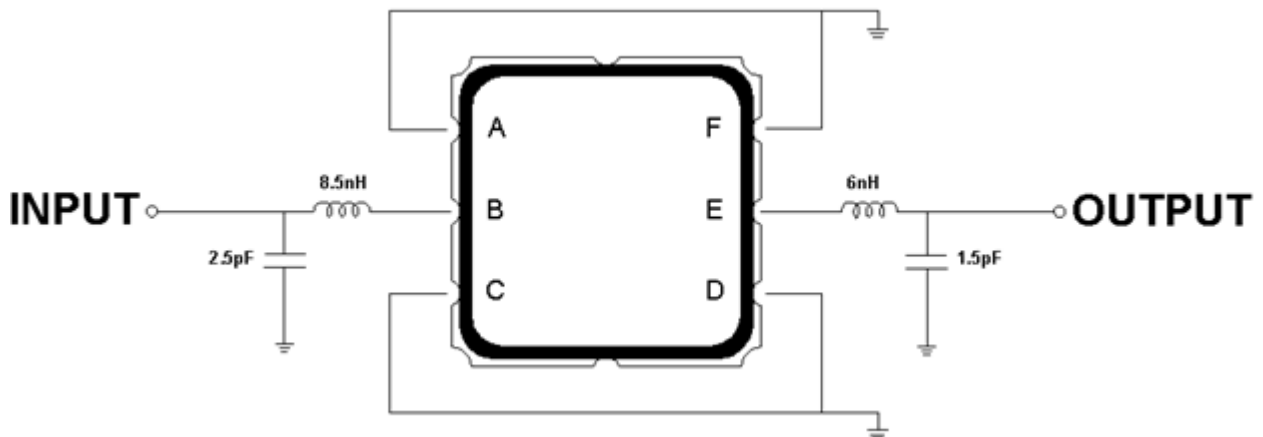
Package Dimensions



Marking Descriptions	
d	Wireless Application
R	Series Number
X	Date Code (Year)
Y	Date Code (Month)

Pin Description	
A, C, D, F	Ground
B	In
E	Out

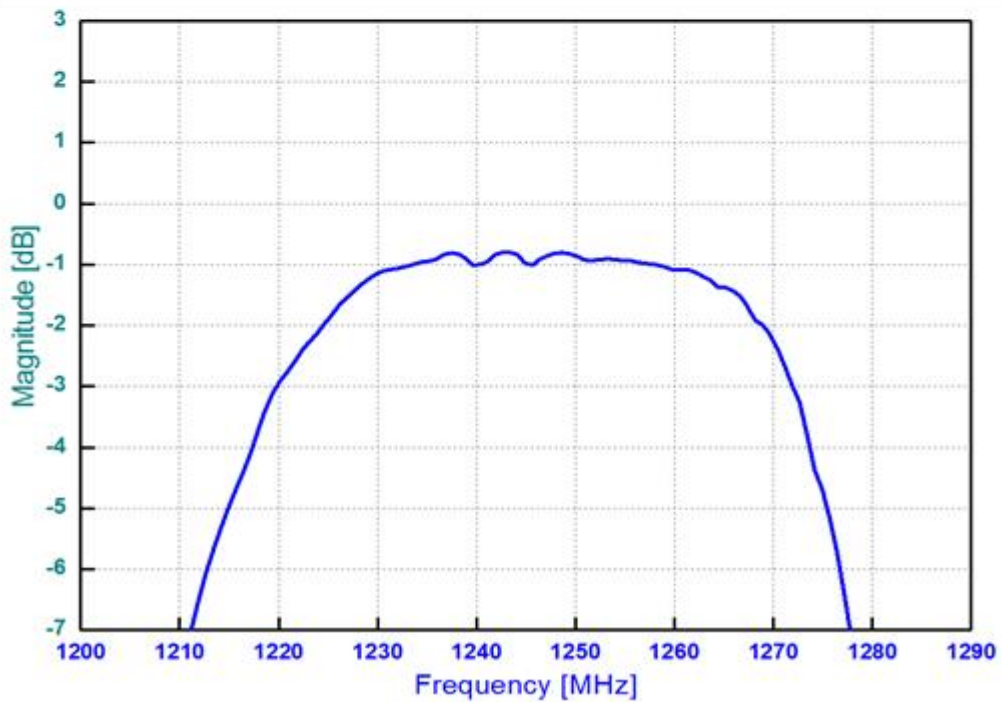
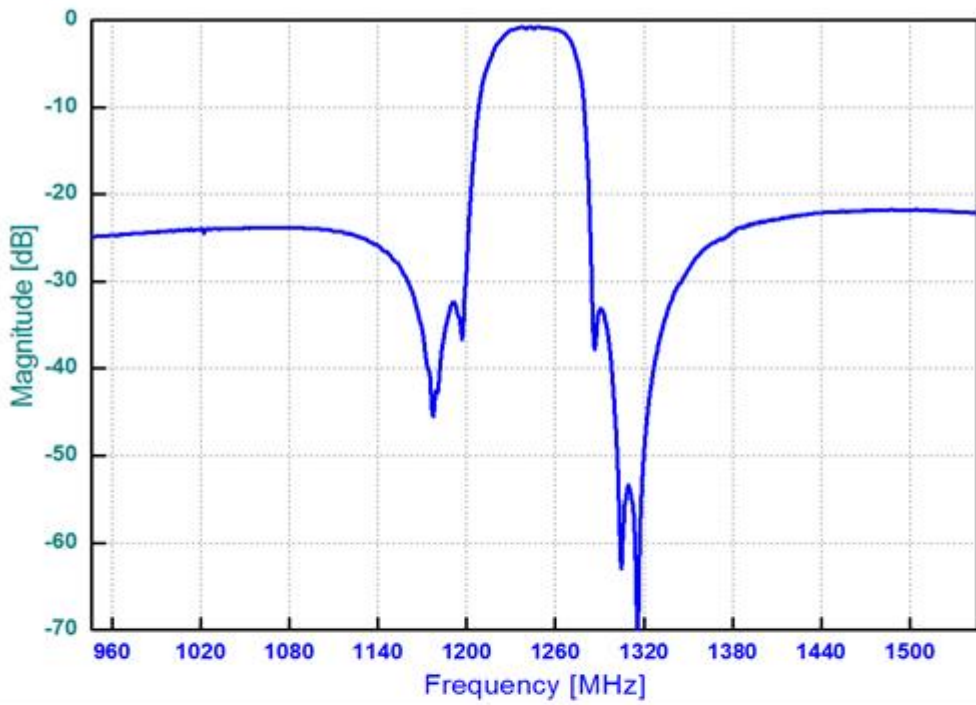
Testing Environment



Source & Load Impedance: 50 Ω

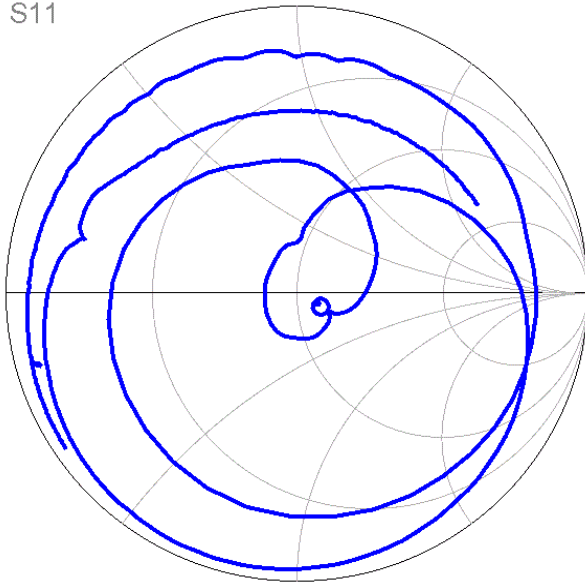
Frequency Characteristics

Frequency Response



Smith Chart

S11



S22

