

- 350.00 MHz IF SAW Filter / 6.50 MHz Bandwidth
- Revision 0: 18 Jul. 2012

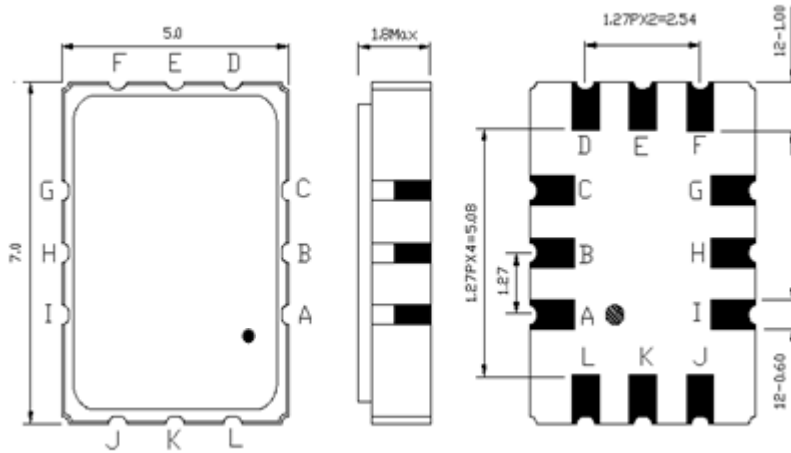
Electrical Characteristics

MAXIMUM RATING				
PARAMETERS DESCRIPTION	UNIT	MINIMUM	TYPICAL	MAXIMUM
Operation Temperature Range	°C	-40	-	85
Storage Temperature Range	°C	-40	-	85
Maximum DC Voltage	V	-	-	-
Maximum Input Power	dBm	-	-	10
Source Impedance (Single-ended) ⁽¹⁾	Ω	-	50	-
Load Impedance (Single-ended) ⁽¹⁾	Ω	-	50	-
Package type & size	S2			
Length x Width	mm ²	-	7.0 x 5.0	-
Height	mm	-	-	1.7

ELECTRICAL SPECIFICATION				
PARAMETERS DESCRIPTION	UNIT	MINIMUM	TYPICAL	MAXIMUM
Center Frequency (Fo)	MHz	-	350.00	-
Maximum Insertion Loss at Fo	dB	-	11.2	12.5
Amplitude Ripple within Fo ± 2.5MHz	dB _{p-p}	-	0.4	1.0
S11 Return Loss within Fo ± 2.5MHz	dB	-	9.0	-
Bandwidth at -1.0 dB	MHz	5.0	6.5	-
Bandwidth at -3.0 dB	MHz	-	7.9	-
Bandwidth at -35.0 dB	MHz	-	14.0	16.0
Attenuation: (Reference level from minimum insertion loss)				
245.0 ~ 320.0 MHz	dB	40	56	-
370.0 ~ 445.0 MHz	dB	40	56	-
Temperature Coefficient	ppm/°C	-	-18	-

Notes : (1) With Matching Network (Ref. Testing Environment Circuit as shown below).
Those impedances could be modified with different impedance values and/or structures, if necessary.

Package Dimensions

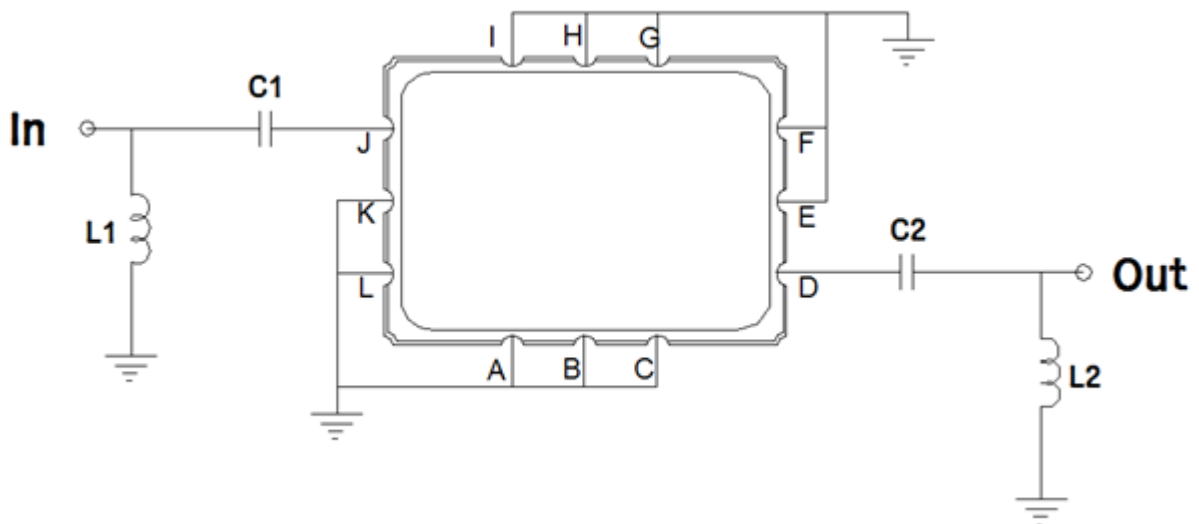


- ① TRANSKO: Brand
- ② TL35006A: Model Name
- ③ X : Date Code (Year)
- ④ Y : Date Code (Month)
- ⑤ Z: Date Code (Date)
- : Index Dot

Pin Description

Pin Description	
A, B, C, E, F, G, H, I, K, L	Ground
J	Input
D	Output

Testing Environment

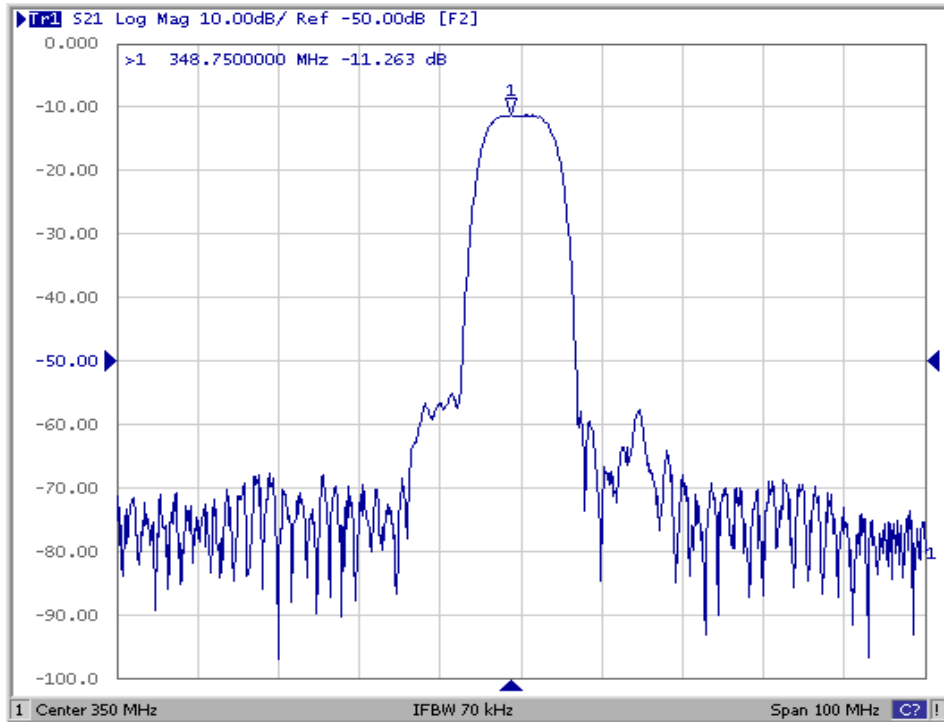


Test Fixture & Values

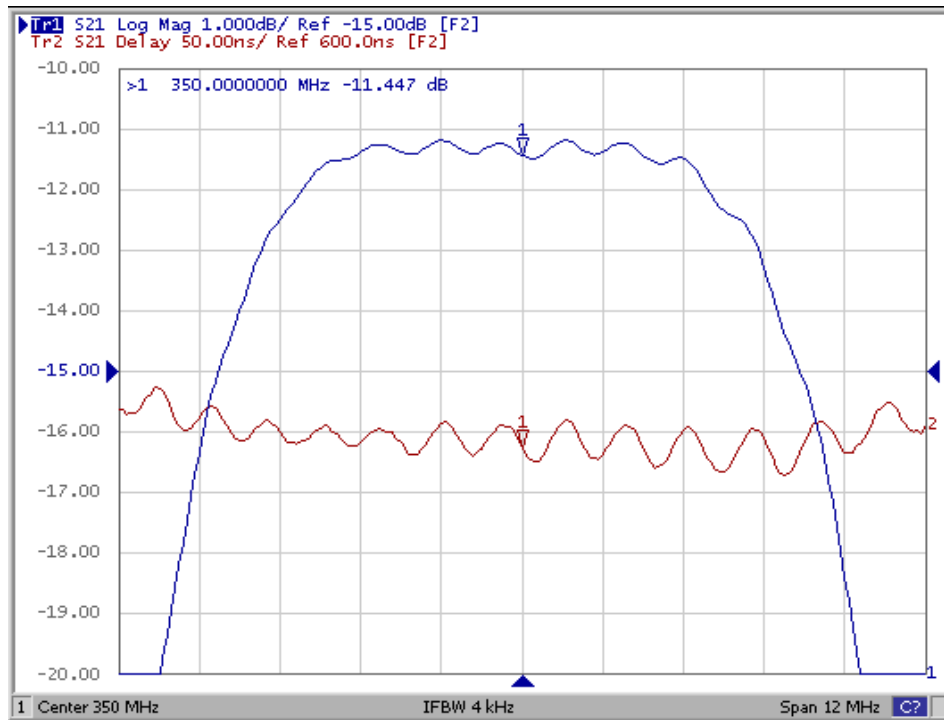
Input	L1=27 nH, C1=57pF
Output	L2=18 nH, C2=68pF
Source/Load Impedance	50 Ω

Frequency Characteristics

Frequency Response



Ripple Variation



Frequency Response

S11 Smith Chart

S22 Smith Chart

