

- 350.00 MHz IF SAW Filter / 1.96 MHz Bandwidth
- Revision 0: 18 Jul. 2012

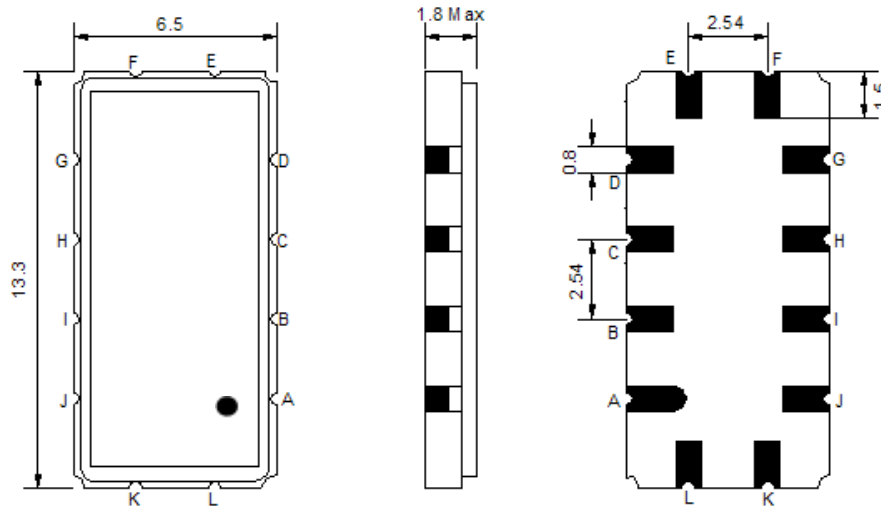
Electrical Characteristics

MAXIMUM RATING				
PARAMETERS DESCRIPTION	UNIT	MINIMUM	TYPICAL	MAXIMUM
Operating Temperature Range	°C	-	25	-
Storage Temperature Range	°C	-40	-	85
Maximum DC Voltage	V	-	-	-
Maximum Input Power	dBm	-	-	20
Source Impedance (single ended) ⁽¹⁾	Ω	-	50	-
Load Impedance (single ended) ⁽¹⁾	Ω	-	50	-
Package type & size	V2			
Length x Width	mm ²	-	13.3 x 6.5	-
Height	mm	-	-	1.8

ELECTRICAL SPECIFICATION				
PARAMETERS DESCRIPTION	UNIT	MINIMUM	TYPICAL	MAXIMUM
Center Frequency (Fo)	MHz	349.9	350.00	350.1
Insertion Loss at Fo	dB	-	13.5	14.5
Amplitude Ripple within Fo ±0.85 MHz	dB _{p-p}	-	0.4	0.7
Group Delay Variation within Fo ±1.1 MHz	nsec	-	35	70
Bandwidth at -0.5 dB	MHz	1.70	1.96	-
Bandwidth at -3.0 dB	MHz	2.60	2.65	-
Bandwidth at -20.0 dB	MHz	-	3.80	4.00
Bandwidth at -45.0 dB	MHz	-	4.40	6.00
Temperature Coefficient	ppm/°C	-	-0.03	-

Notes : (1) With Matching Network (Ref. Testing Environment Circuit as shown below).
Those impedances could be modified with different impedance values and/or structures, if necessary.

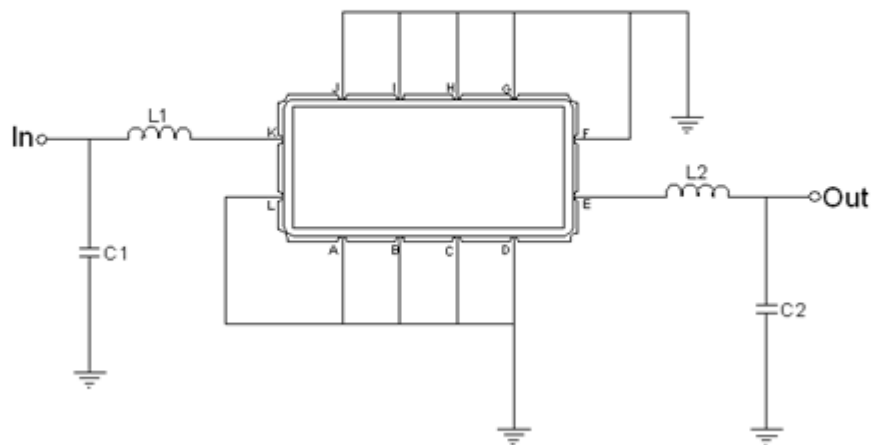
Package Dimensions



- ① **TRANSKO:** Brand
- ② **TL35001A:** Model Name
- ③ **X :** Date Code (Year)
- ④ **Y :** Date Code (Month)
- ⑤ **Z :** Date Code (Date)
- : Index Dot

Pin Description	
A, B, C, D, F, G, H, I, J, L	Ground
K	Input
E	Output

Testing Environment



Test Fixture & Values	
Input	L1=15nH Q>40, C1=27pF
Output	L2=15nH Q>40, C2=27pF
Source/Load Impedance	50 Ω

Frequency Characteristics

Frequency Response

