

- 320.0 MHz IF SAW Filter / 34.0MHz Bandwidth
- Revision 0: 30 Oct. 2009

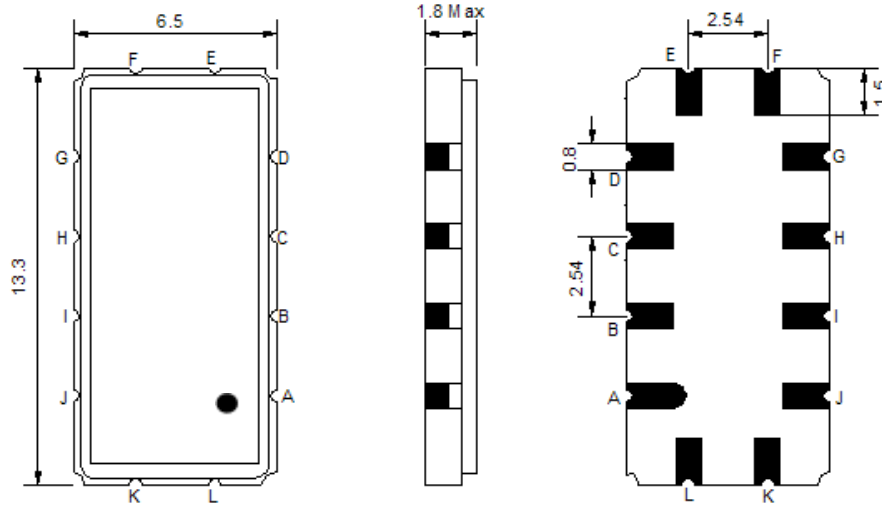
Electrical Characteristics

MAXIMUM RATING				
PARAMETERS DESCRIPTION	UNIT	MINIMUM	TYPICAL	MAXIMUM
Operating Temperature Range	°C	-30	-	80
Storage Temperature Range	°C	-40	-	85
Maximum DC Voltage	V	-	-	10
Maximum Input Power	dBm	-	-	10
Source Impedance (single ended) ⁽¹⁾	Ω	-	50	-
Load Impedance (single ended) ⁽¹⁾	Ω	-	50	-
Package type & size	V			
Length x Width	mm ²	-	13.3 x 6.5	-
Height	mm	-	-	1.8

ELECTRICAL SPECIFICATION				
PARAMETERS DESCRIPTION	UNIT	MINIMUM	TYPICAL	MAXIMUM
Center Frequency (Fo)	MHz	-	320.0	-
Insertion Loss at Fo	dB	-	14.2	16.0
Group Delay Variation at Fo ± 15.0 MHz	nsec	-	26	50
Absolute Delay at Fo	usec	-	0.6	
Passband Ripple Variation at Fo ± 15.0 MHz	dB	-	0.4	0.95
Bandwidth at -1dB	MHz	33.70	34.00	-
Bandwidth at -20dB	MHz	-	39.36	-
Bandwidth at -40dB	MHz	-	41.35	41.50
Ultimate Rejection	dB	40	43	-
Temperature Coefficient	ppm/°C	-	-86	-

Notes : (1) With Matching Network (Ref. Testing Environment Circuit as shown below).
Those impedances could be modified with different impedance values and/or structures, if necessary.

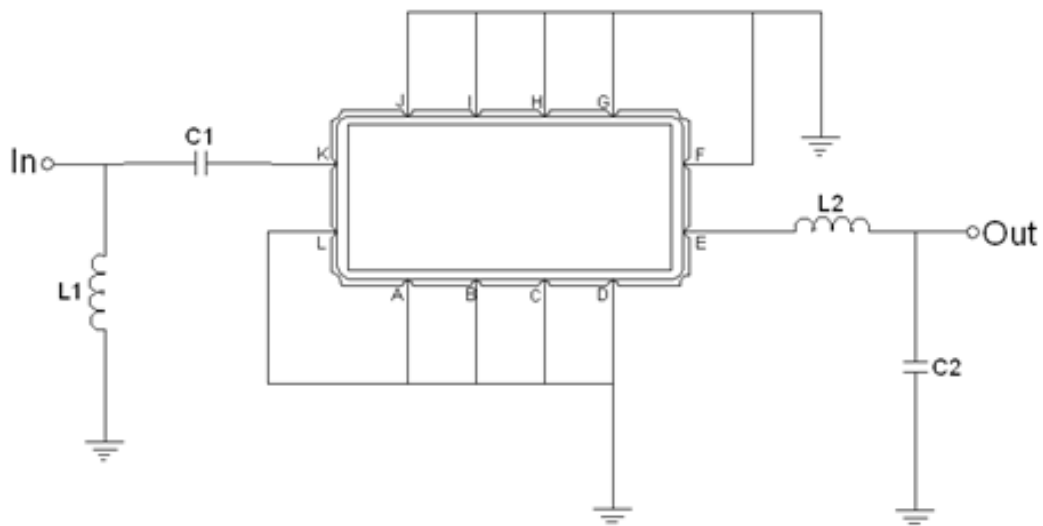
Package Dimensions



- ① **TRANSKO:** Brand
- ② **TL32034A:** Model Name
- ③ **X :** Date Code (Year)
- ④ **Y :** Date Code (Month)
- ⑤ **Z :** Date Code (Date)
- : Index Dot

Pin Description	
A, B, C, D, F, G, H, I, J, L	Ground
K	Input
E	Output

Testing Environment

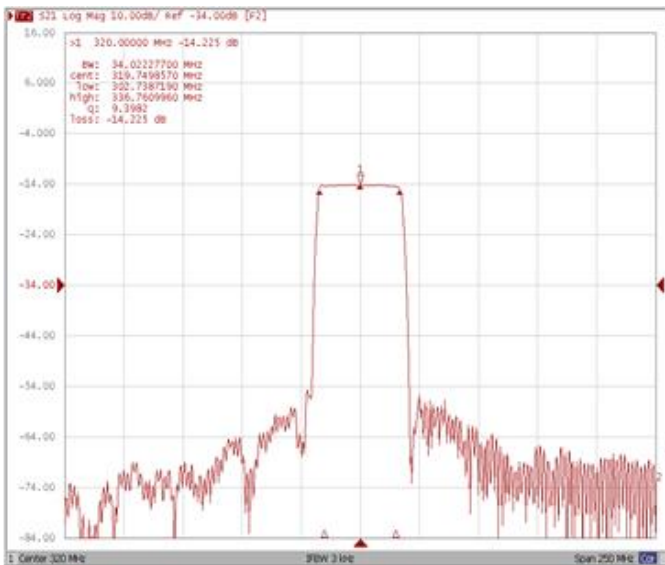


Test Fixture & Values	
Input	L1 = 27nH, C1 = 15F
Output	L2 = 12nH, C2 = 24pF
Source/Load Impedance	50 Ω

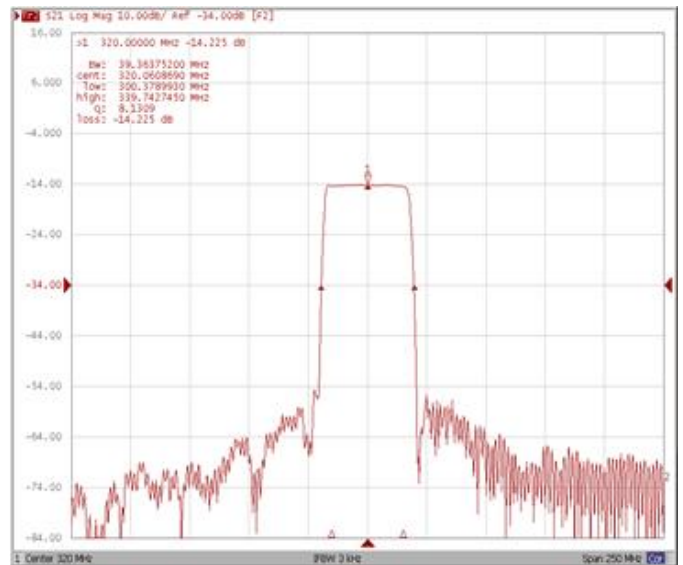
Frequency Characteristics

Frequency Response

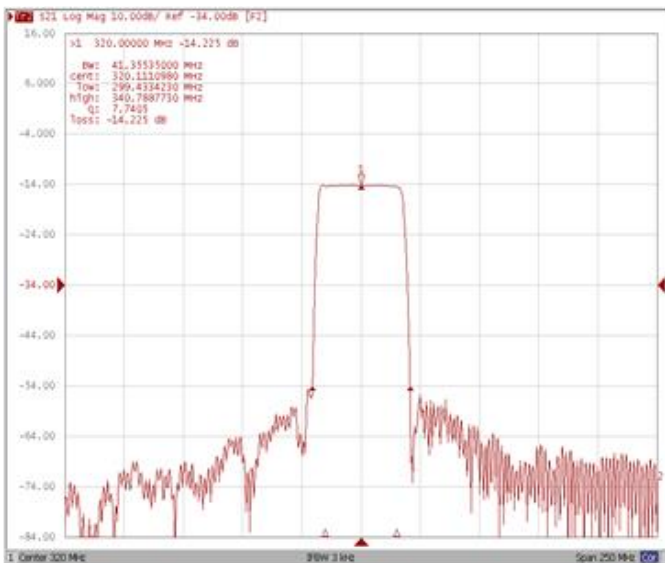
Bandwidth at -1.0 dB



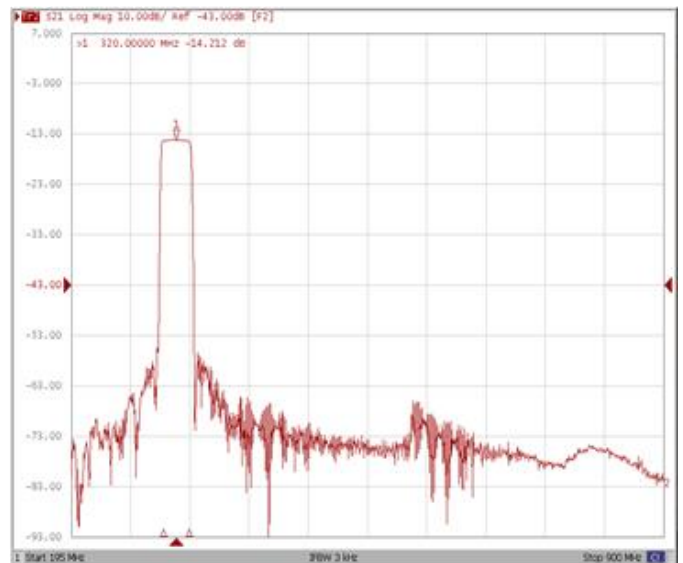
Bandwidth at -20.0 dB



Bandwidth at -40.0 dB



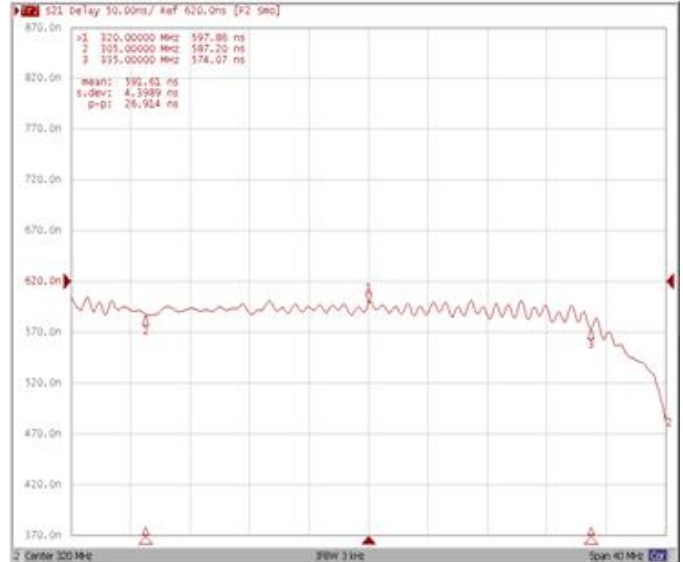
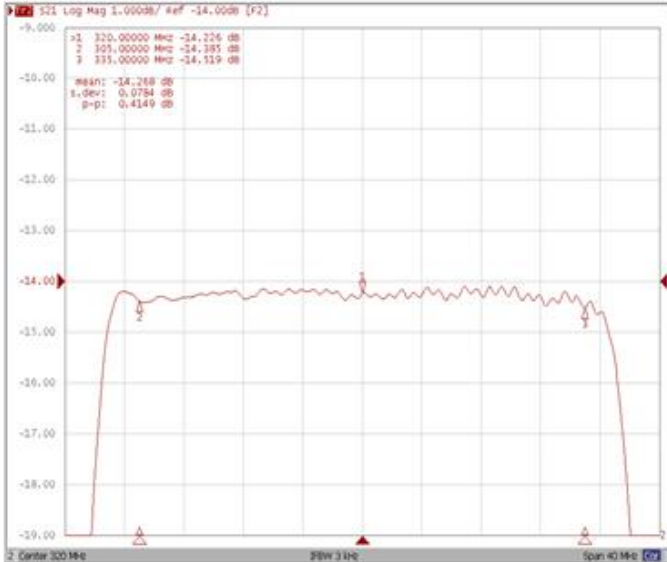
Wide Band



Frequency Response

Ripple Variation Fo±15.0MHz

Group Delay Variation Fo±15.0MHz



Smith Chart

VSWR

