

- 240.0 MHz IF SAW Filter / 28.0 MHz Bandwidth
- Revision 1: 20 Feb. 2008

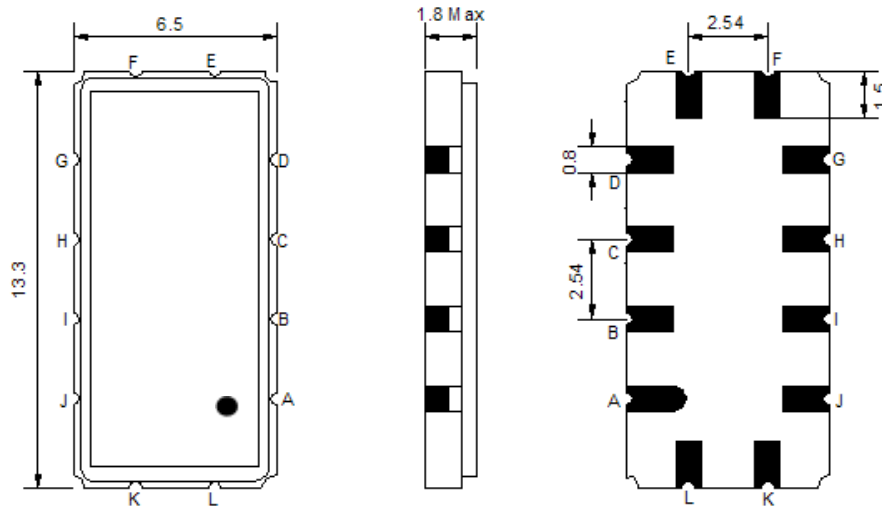
Electrical Characteristics

MAXIMUM RATING				
PARAMETERS DESCRIPTION	UNIT	MINIMUM	TYPICAL	MAXIMUM
Operating Temperature Range	°C	-30	-	80
Storage Temperature Range	°C	-40	-	85
Maximum DC Voltage	V	-	-	10
Maximum Input Power	dBm	-	-	10
Source Impedance (single ended) ⁽¹⁾	Ω	-	50	-
Load Impedance (single ended) ⁽¹⁾	Ω	-	50	-
Package type & size	V			
Length x Width	mm ²	-	13.3 x 6.5	-
Height	mm	-	-	1.8

ELECTRICAL SPECIFICATION				
PARAMETERS DESCRIPTION	UNIT	MINIMUM	TYPICAL	MAXIMUM
Center Frequency (Fo)	MHz	-	240.0	-
Insertion Loss at Fo	dB	-	15.5	18.0
Amplitude Ripple within fo ±12.5 MHz	dB _{p-p}	-	0.35	1.00
Group Delay Variation within fo ±12.5 MHz	nsec	-	22	50
Absolute Delay at Fo	µsec	-	0.7	-
Bandwidth at -1.0 dB	MHz	27.20	28.02	-
Bandwidth at -20.0 dB	MHz	-	32.20	-
Bandwidth at -40.0 dB	MHz	-	33.77	34.50
Ultimate Rejection	dB	40	48	-
Temperature Coefficient	ppm/°C	-	-86	-

Notes : (1) With Matching Network (Ref. Testing Environment Circuit as shown below).
Those impedances could be modified with different impedance values and/or structures, if necessary.

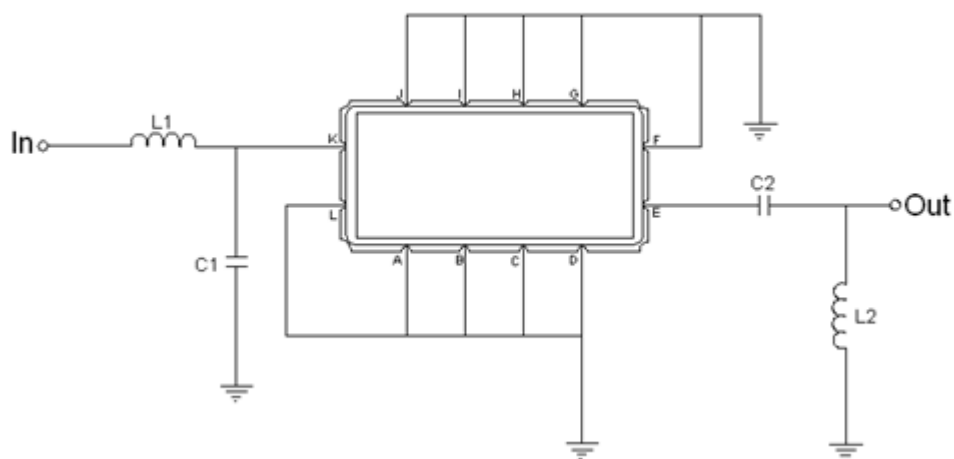
Package Dimensions



- ① **TRANSKO:** Brand
- ② **TL24028A:** Model Name
- ③ **X :** Date Code (Year)
- ④ **Y :** Date Code (Month)
- ⑤ **Z :** Date Code (Date)
- : Index Dot

Pin Description	
A, B, C, D, F, G, H, I, J, L	Ground
K	Input
E	Output

Testing Environment



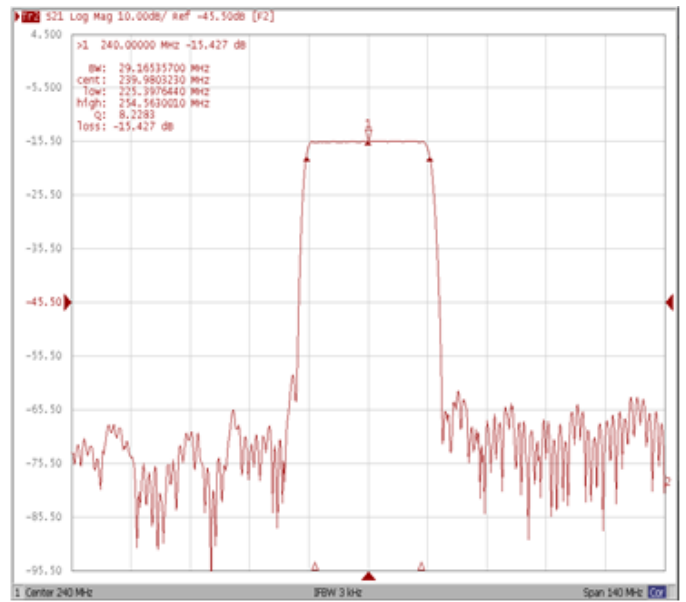
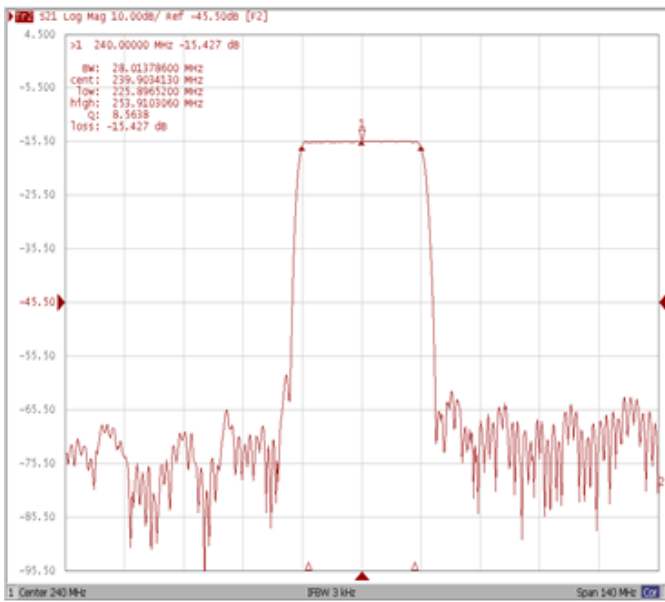
Test Fixture & Values	
Input	L1=10nH, C1=9pF
Output	L2=15nH, C2=56pF
Source/Load Impedance	50 Ω

Frequency Characteristics

Frequency Response

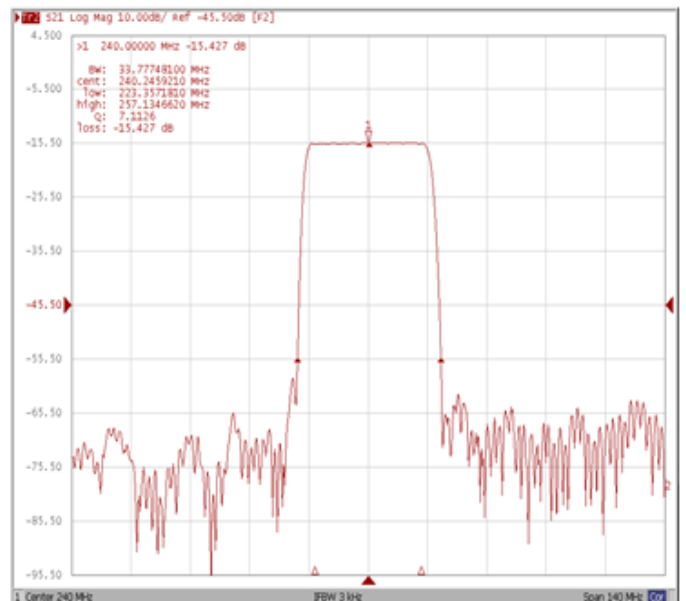
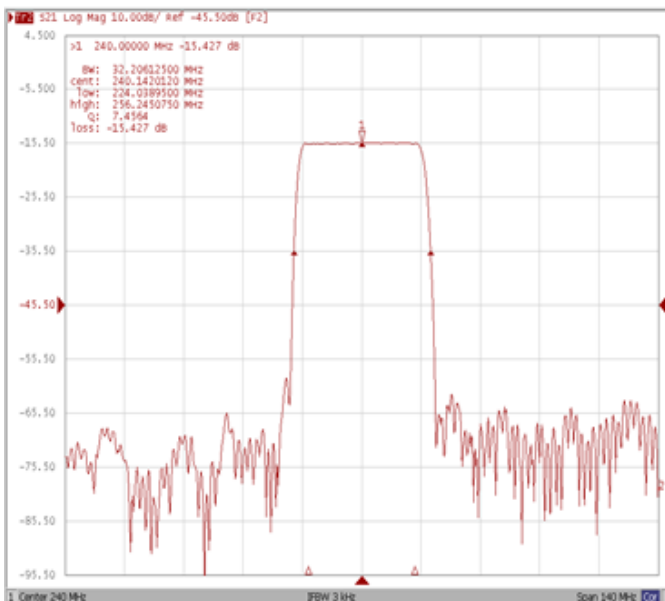
Bandwidth at -1.0 dB

Bandwidth at -3.0 dB



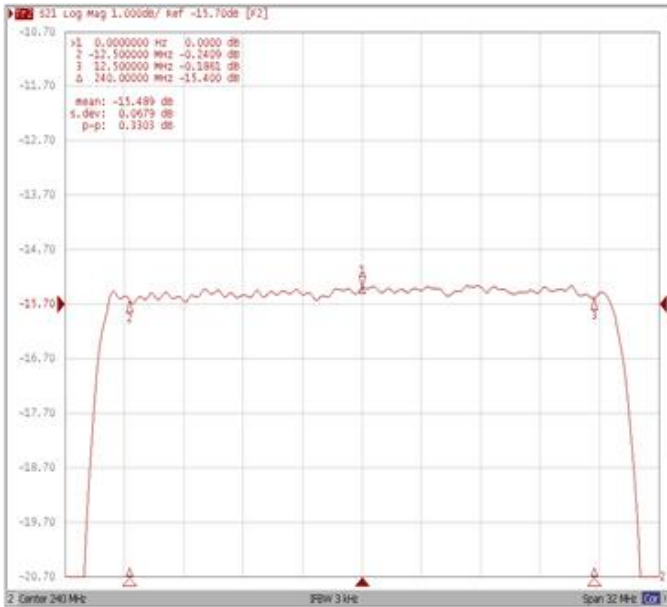
Bandwidth at -20.0 dB

Bandwidth at -40.0 dB

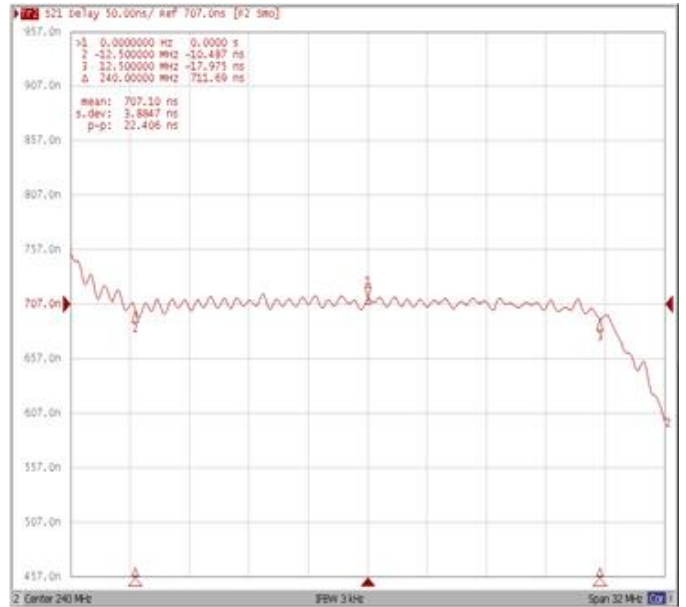


Frequency Response

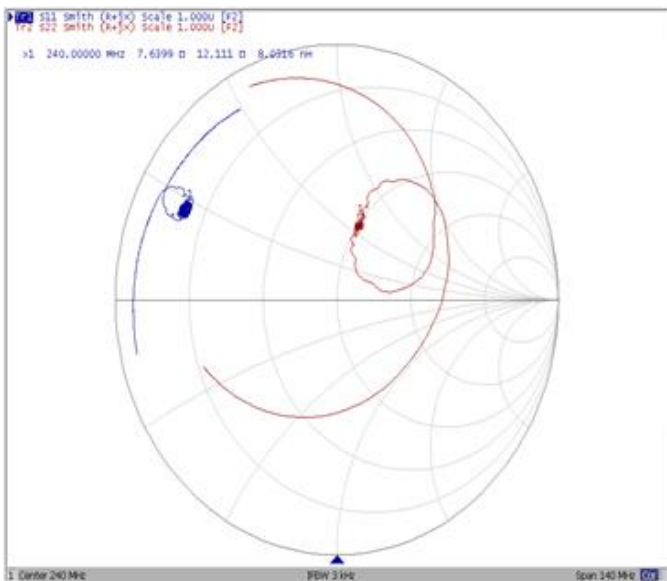
Ripple Variation Fo±12.5MHz



Group Delay Variation Fo±12.5MHz



Smith Chart



SWR

