

- 162.00 MHz IF SAW Filter / 0.09 MHz Bandwidth
- Revision 0: 22 Dec. 2011

Electrical Characteristics

MAXIMUM RATING				
PARAMETERS DESCRIPTION	UNIT	MINIMUM	TYPICAL	MAXIMUM
Operating Temperature Range	°C	-30	-	85
Storage Temperature Range	°C	-40	-	85
Maximum DC Voltage	V	-	-	0
Maximum Input Power	dBm	-	-	10
Source Impedance (single ended) ⁽¹⁾	Ω	-	50	-
Load Impedance (single ended) ⁽¹⁾	Ω	-	50	-
Package type & size	V			
Length x Width	mm ²	-	13.3 x 6.5	-
Height	mm	-	-	1.8

ELECTRICAL SPECIFICATION				
PARAMETERS DESCRIPTION	UNIT	MINIMUM	TYPICAL	MAXIMUM
Center Frequency (Fo)	MHz	161.92	162.00	162.08
Insertion Loss at Fo	dB	-	4.8	6.5
Group Delay Variation at Fo ± 0.06 MHz	usec	-	3.0	-
Absolute Delay at Fo	usec	-	6.0	-
Passband Ripple Variation	dB	-	0.55	1.00
Bandwidth at -1dB	MHz	0.07	0.09	-
Bandwidth at -3dB	MHz	-	0.12	-
Bandwidth at -40dB	MHz	-	0.43	0.60
Ultimate Rejection	dB	50	52	-
Temperature Coefficient	ppm/°C	-	-0.03	-

Notes : (1) With Matching Network (Ref. Testing Environment Circuit as shown below).
Those impedances could be modified with different impedance values and/or structures, if necessary.

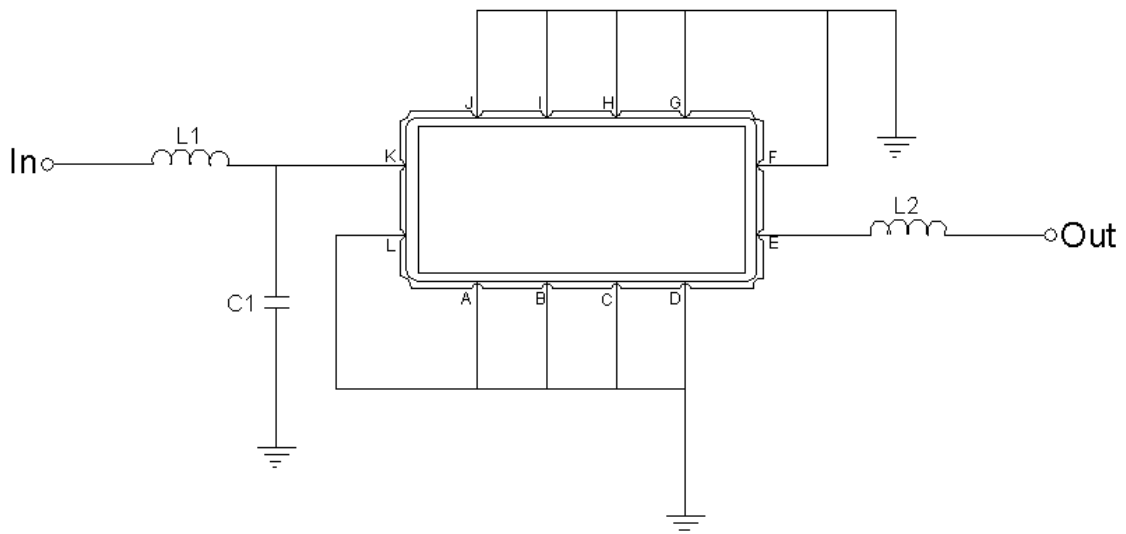
Package Dimensions



- ① **TRANSKO:** Brand
- ② **TL162001A:** Model Name
- ③ **X :** Date Code (Year)
- ④ **Y :** Date Code (Month)
- ⑤ **Z :** Date Code (Date)
- : Index Dot

Pin Description	
A, B, C, D, F, G, H, I, J, L	Ground
K	Input
E	Output

Testing Environment



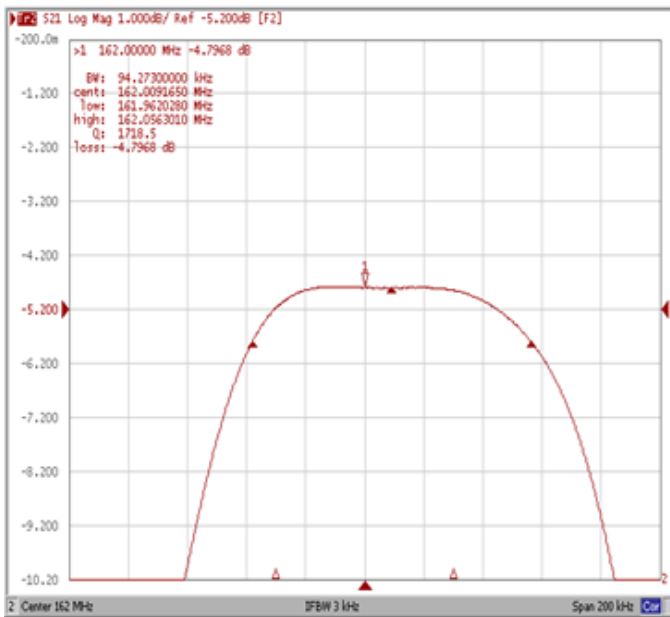
Test Fixture & Values	
Input	L1 = 220nH, C1=0.68pF
Output	L2 = 220nH
Source/Load Impedance	50 Ω

Frequency Characteristics

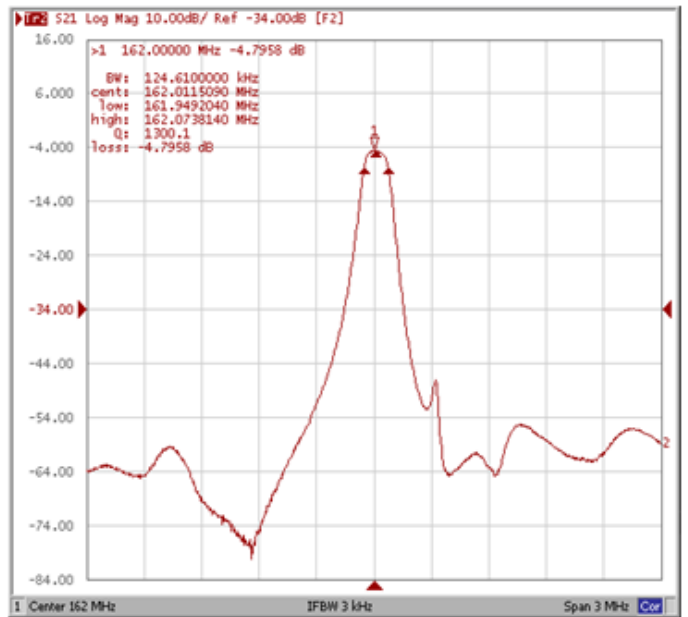
Frequency Response

Operating Temperature : +25 °C

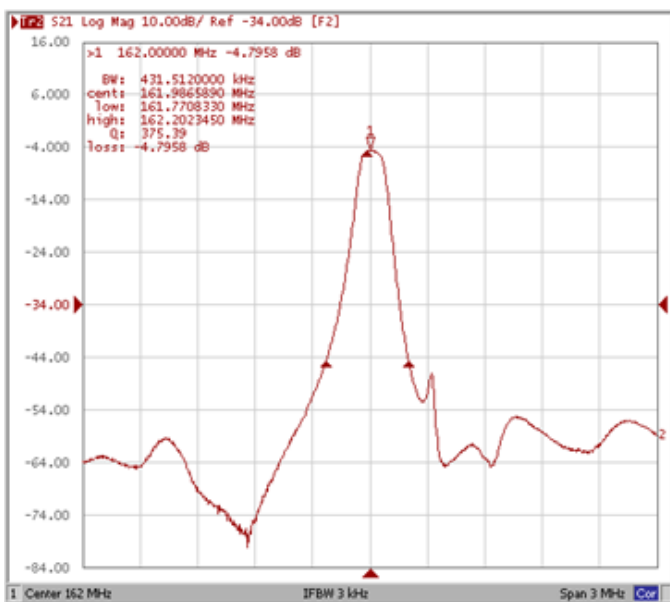
Bandwidth at -1.0 dB



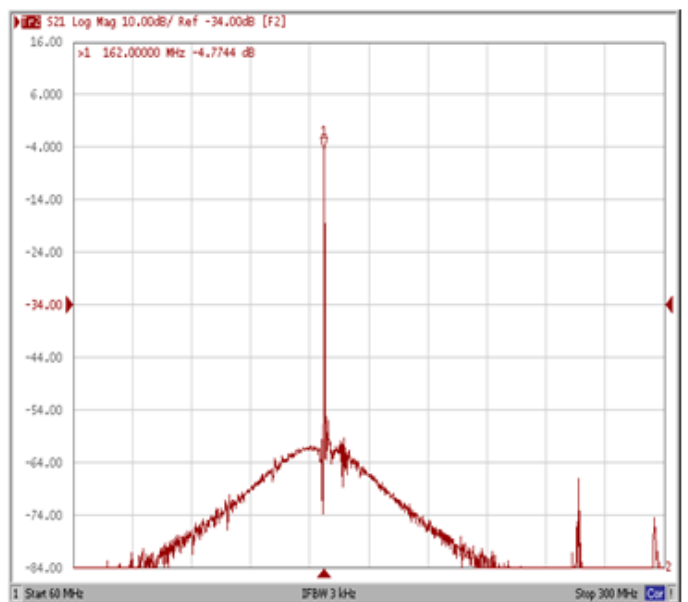
Bandwidth at -3.0 dB



Bandwidth at -40.0 dB



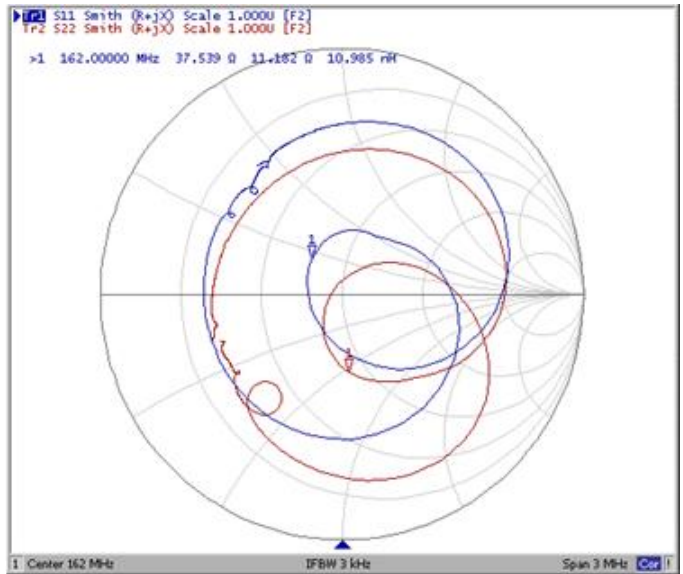
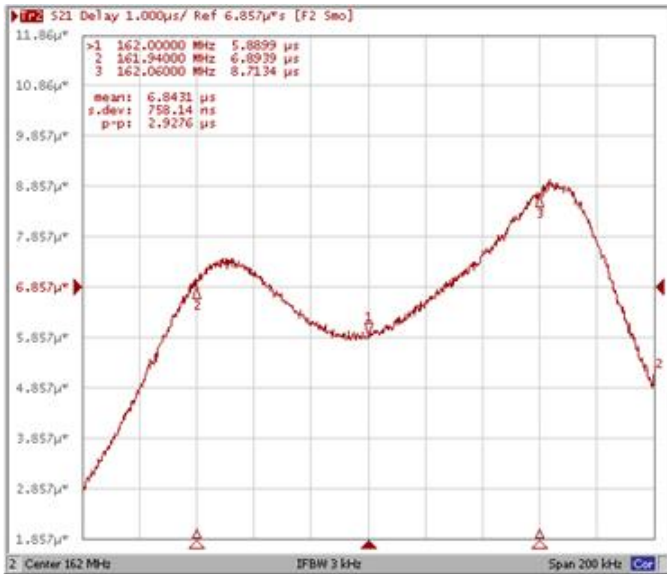
Wide Band



Frequency Response

Group Delay Variation Fo±0.06MHz

Smith Chart



VSWR S11

VSWR S22

