

- 130.90 MHz IF SAW Filter / 7.80 MHz Bandwidth
- Revision 2: 1 Oct. 2007

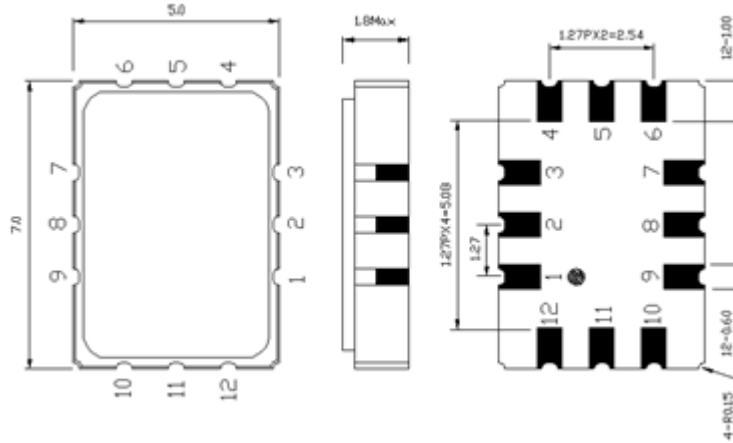
Electrical Characteristics

MAXIMUM RATING				
PARAMETERS DESCRIPTION	UNIT	MINIMUM	TYPICAL	MAXIMUM
Operation Temperature Range	°C	-40	-	85
Storage Temperature Range	°C	-40	-	85
Maximum DC Voltage	V	-	-	10
Maximum Input Power	dBm	-	-	10
Source Impedance (single ended) ⁽¹⁾	Ω	-	50	-
Load Impedance (single ended) ⁽¹⁾	Ω	-	50	-
Package type & size	S1			
Length x Width	mm ²	-	7.0 x 5.0	-
Height	mm	-	-	1.8

ELECTRICAL SPECIFICATION				
PARAMETERS DESCRIPTION	UNIT	MINIMUM	TYPICAL	MAXIMUM
Center Frequency (Fo)	MHz	-	130.9	-
Insertion Loss at Fo	dB	-	16.0	19.0
Amplitude Ripple Variation	dB _{p-p}	-	0.5	1.0
Group Delay Variation (Fo ± 3.5 MHz)	nsec	-	60	90
Absolute Delay at Fo	µsec	-	0.76	-
Temperature Coefficient	ppm/°C	-	-23	-
Bandwidth at -1.0 dB	MHz	7.5	7.8	-
Bandwidth at -3.0 dB	MHz	8.4	8.7	-
Bandwidth at -40.0 dB	MHz	-	12.4	12.7
Relative Attenuation:				
Lower Sidelobe	dB	40	45	-
Upper Sidelobe	dB	40	45	-

Notes : (1) With Matching Network (Ref. Testing Environment Circuit as shown below).
Those impedances could be modified with different impedance values and/or structures, if necessary.

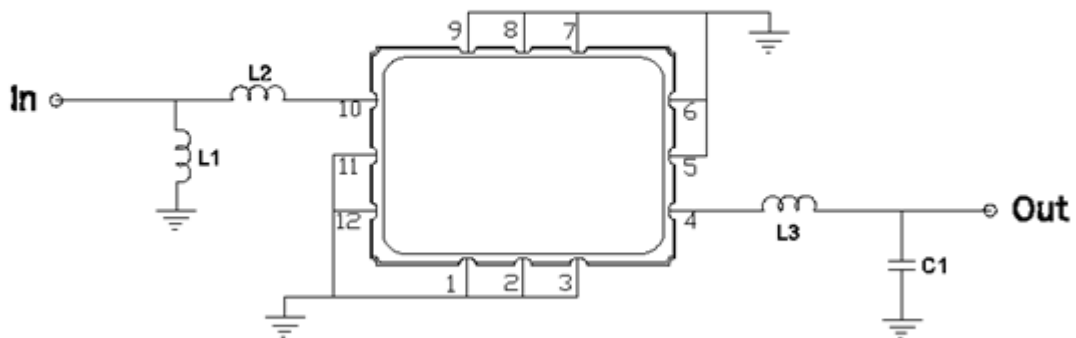
Package Dimensions



Pin Description

1, 2, 3, 5, 6, 7, 8, 9, 11, 12	Ground
10	Input
4	Output

Testing Environment



Test Fixture & Values

Input	L1=47 nH , L2=33 nH
Output	L3=150 nH , C1=30 pF
Source/Load Impedance	50 Ω

Frequency Characteristics

Frequency Response

