

- 112.5 MHz IF SAW Filter / 67.10 MHz Bandwidth
- Revision 0: 29 May 2009

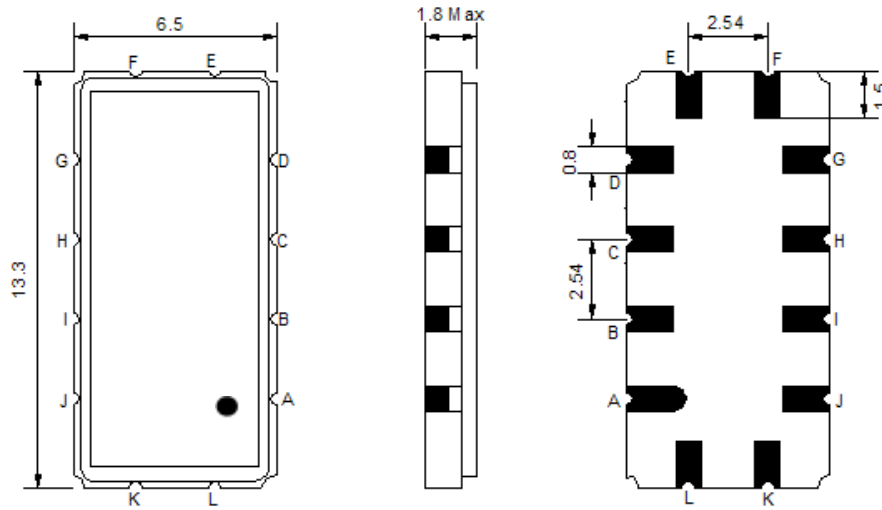
Electrical Characteristics

MAXIMUM RATING				
PARAMETERS DESCRIPTION	UNIT	MINIMUM	TYPICAL	MAXIMUM
Operating Temperature Range	°C	-	25	-
Storage Temperature Range	°C	-40	-	85
Maximum DC Voltage	V	-	-	10
Maximum Input Power	dBm	-	-	10
Source Impedance (single ended) ⁽¹⁾	Ω	-	50	-
Load Impedance (single ended) ⁽¹⁾	Ω	-	50	-
Package type & size	V			
Length x Width	mm ²	-	13.3 x 6.5	-
Height	mm	-	-	1.8

ELECTRICAL SPECIFICATION				
PARAMETERS DESCRIPTION	UNIT	MINIMUM	TYPICAL	MAXIMUM
Center Frequency (Fo)	MHz	-	112.5	-
Insertion Loss at Fo	dB	-	28.00	30.00
Group Delay Variation (Fo±32.0MHz)	nsec	-	17	30
Absolute Delay	usec	-	0.85	-
Passband Ripple (Fo±32.0MHz)	dB	-	0.7	1.2
Bandwidth at -1dB	MHz	66.80	67.10	-
Bandwidth at -3dB	MHz	-	68.55	-
Bandwidth at -40dB	MHz	-	75.70	76.30
Ultimate Rejection	dB	-	40	-
Temperature coefficient	ppm/°C	-	-72	-

Notes : (1) With Matching Network (Ref. Testing Environment Circuit as shown below).
Those impedances could be modified with different impedance values and/or structures, if necessary.

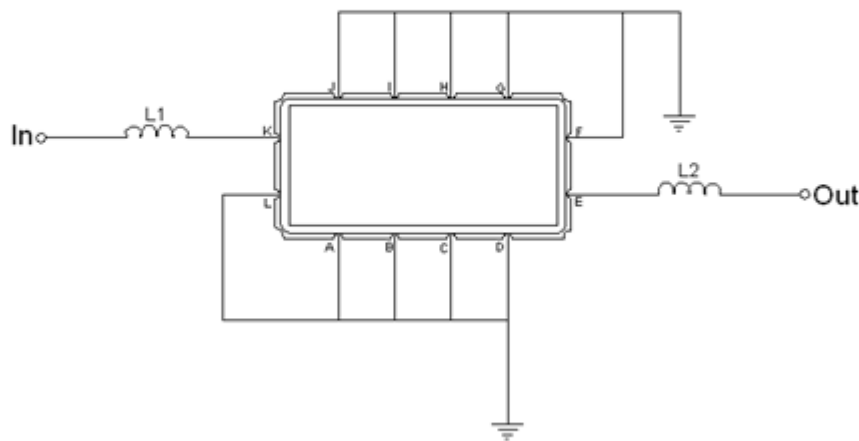
Package Dimensions



- ① **TRANSKO:** Brand
- ② **TL11265A:** Model Name
- ③ **X :** Date Code (Year)
- ④ **Y :** Date Code (Month)
- ⑤ **Z :** Date Code (Date)
- : Index Dot

Pin Description	
A, B, C, D, F, G, H, I, J, L	Ground
K	Input
E	Output

Testing Environment

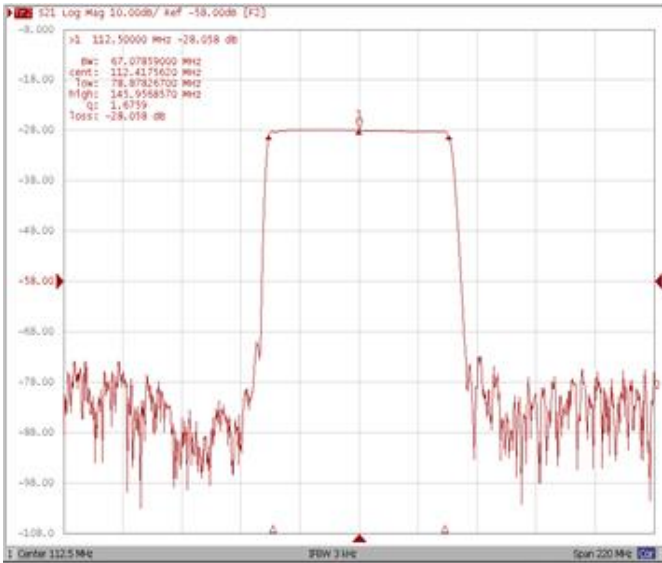


Test Fixture & Values	
Input	L1=27nH
Output	L2=12nH
Source/Load Impedance	50 Ω

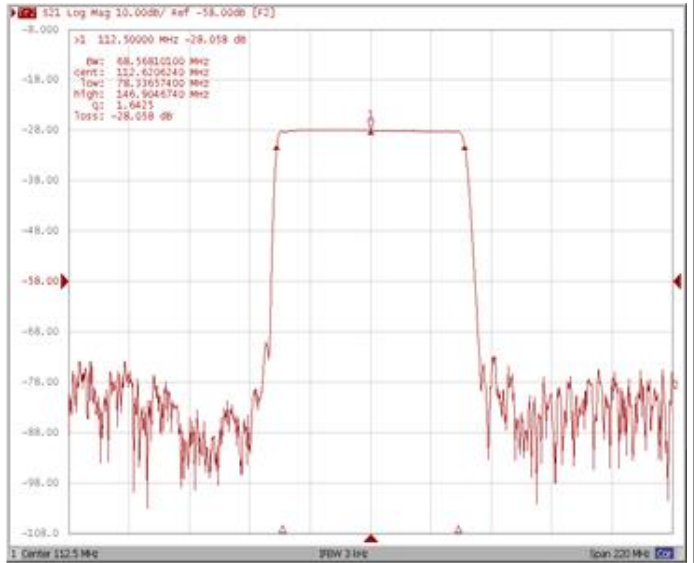
Frequency Characteristics

Frequency Response

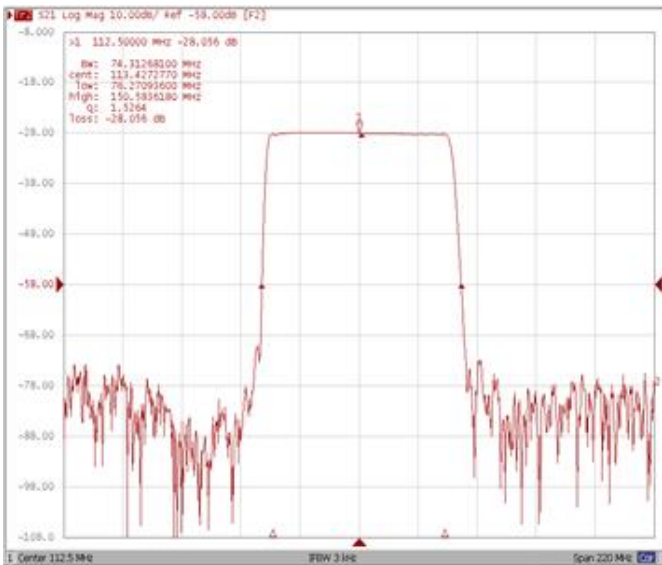
Bandwidth at -1.0 dB



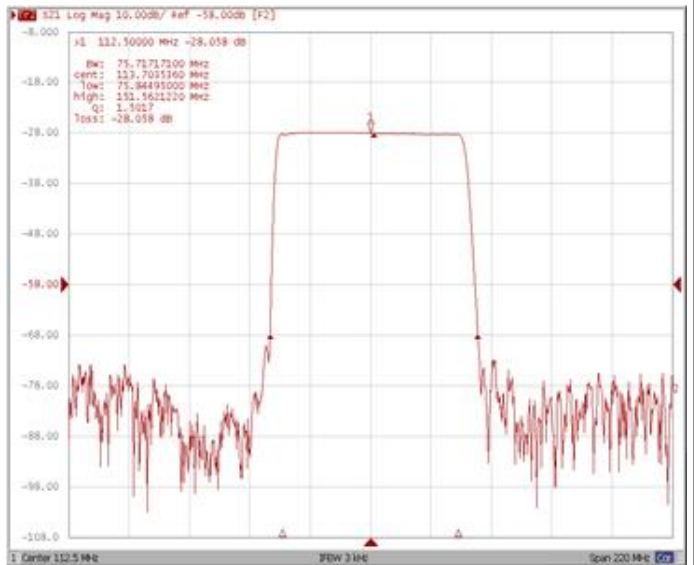
Bandwidth at -3.0 dB



Bandwidth at -30.0 dB



Bandwidth at -40.0 dB

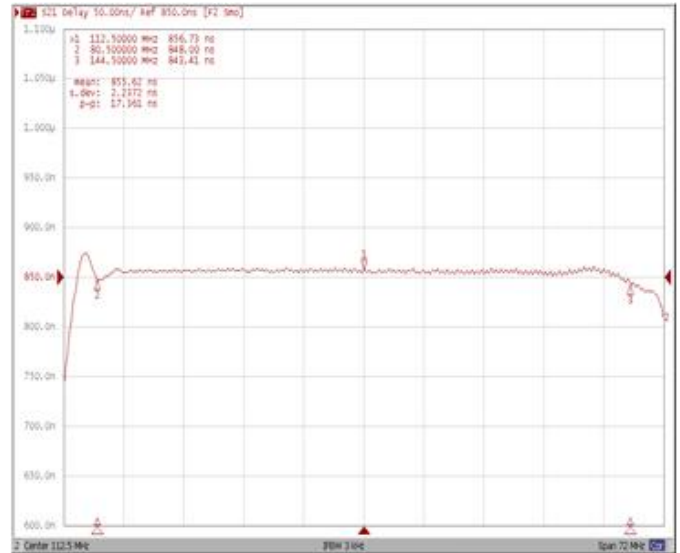


Frequency Response

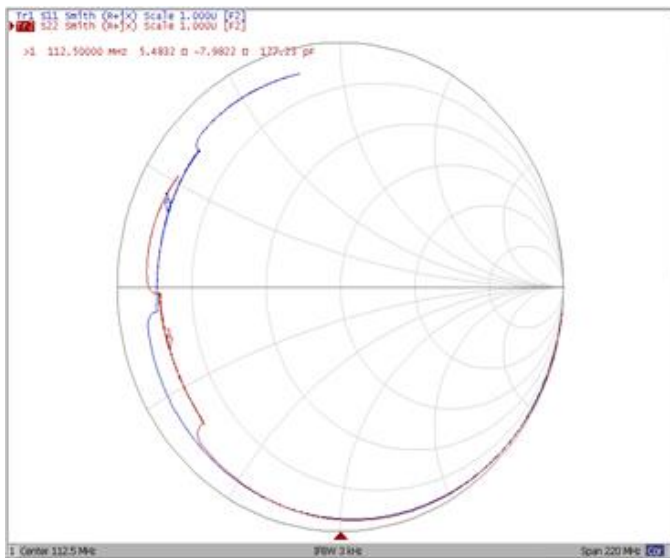
Ripple Variation Fo±32.0MHz



Group Delay Variation Fo±32.0MHz



Smith Chart



VSWR

