

- 104.0 MHz IF SAW Filter / 5.60 MHz Bandwidth
- Revision 0: 06 Mar. 2008

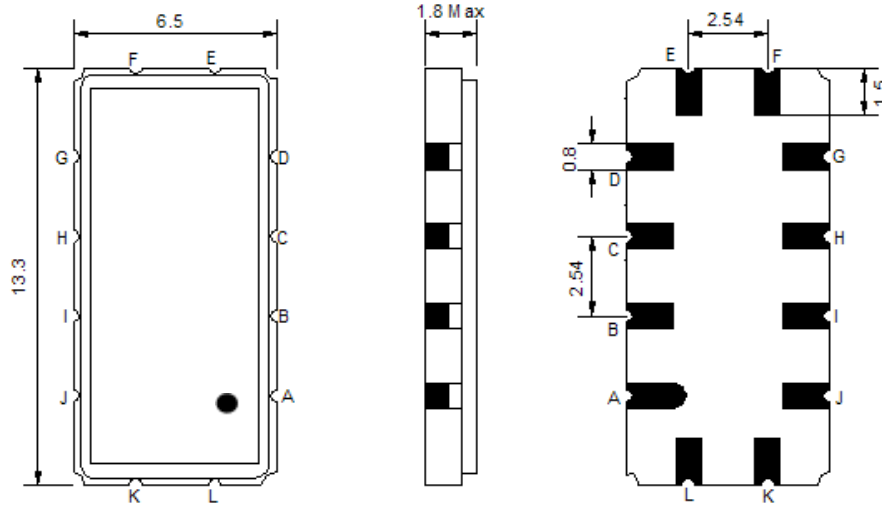
Electrical Characteristics

MAXIMUM RATING				
PARAMETERS DESCRIPTION	UNIT	MINIMUM	TYPICAL	MAXIMUM
Operating Temperature Range	°C	0	-	70
Storage Temperature Range	°C	-40	-	85
Maximum DC Voltage	V	-	-	10
Maximum Input Power	dBm	-	-	10
Source Impedance (single ended) ⁽¹⁾	Ω	-	50	-
Load Impedance (single ended) ⁽¹⁾	Ω	-	50	-
Package type & size	V			
Length x Width	mm ²	-	13.3 x 6.5	-
Height	mm	-	-	1.8

ELECTRICAL SPECIFICATION				
PARAMETERS DESCRIPTION	UNIT	MINIMUM	TYPICAL	MAXIMUM
Center Frequency (Fo)	MHz	-	104.0	-
Insertion Loss at Fo	dB	-	14.0	15.5
Temperature Coefficient	ppm/°C	-	-18	-
Amplitude Ripple within fo ±2.5 MHz	dB _{p-p}	-	0.50	1.0
Group Delay Variation within fo ±2.5 MHz	nsec	-	60	100
Absolute Delay at Fo	µsec	-	1.63	-
Bandwidth at -1.0 dB	MHz	5.50	5.60	-
Bandwidth at -3.0 dB	MHz	-	5.98	-
Bandwidth at -40.0 dB	MHz	-	7.70	8.00
Relative Attenuation:				
Fo ±4.0 MHz	dB	-	50	
Lower Sidelobe	dB	45	50	-
Upper Sidelobe	dB	45	50	-

Notes : (1) With Matching Network (Ref. Testing Environment Circuit as shown below).
Those impedances could be modified with different impedance values and/or structures, if necessary.

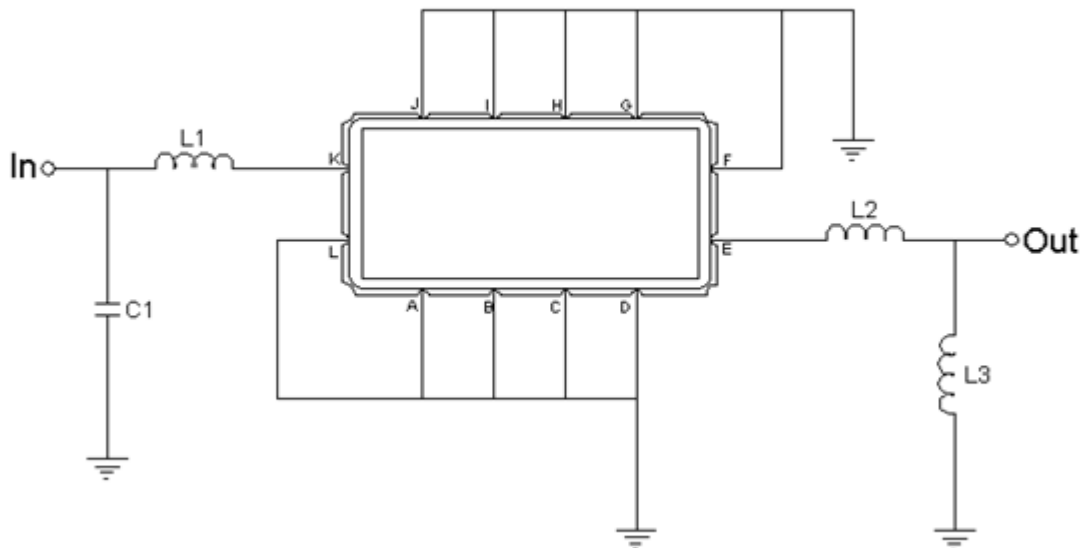
Package Dimensions



- ① **TRANSKO:** Brand
- ② **TL10405A:** Model Name
- ③ **X :** Date Code (Year)
- ④ **Y :** Date Code (Month)
- ⑤ **Z :** Date Code (Date)
- : Index Dot

Pin Description	
A, B, C, D, F, G, H, I, J, L	Ground
K	Input
E	Output

Testing Environment



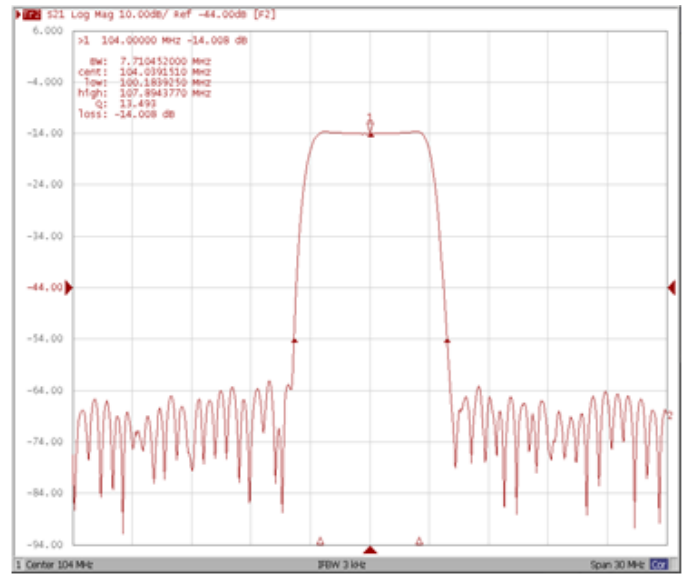
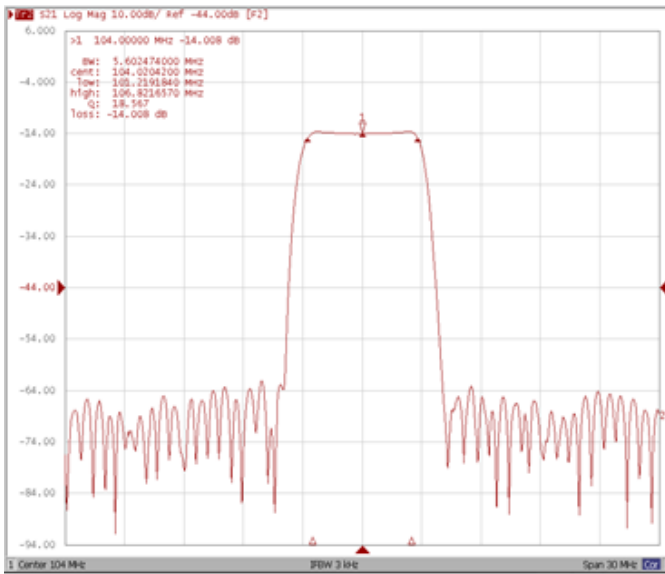
Test Fixture & Values	
Input	L1=82nH , C1=47pF
Output	L2=18nH , L3=39nH
Source/Load Impedance	50 Ω

Frequency Characteristics

Frequency Response

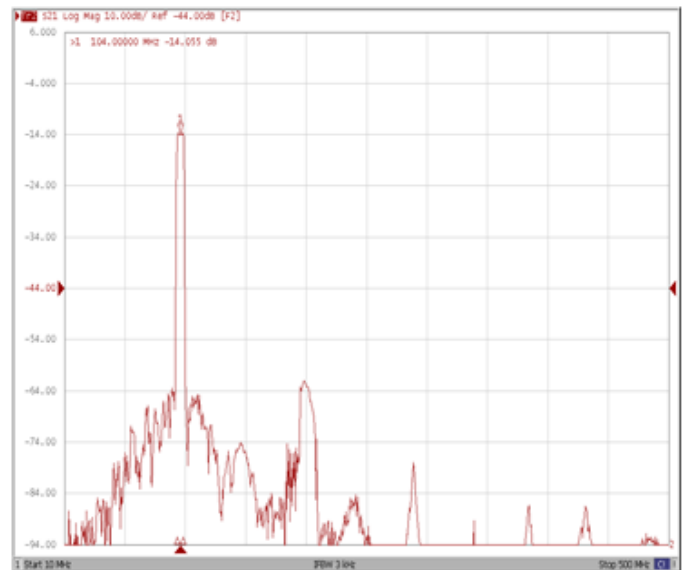
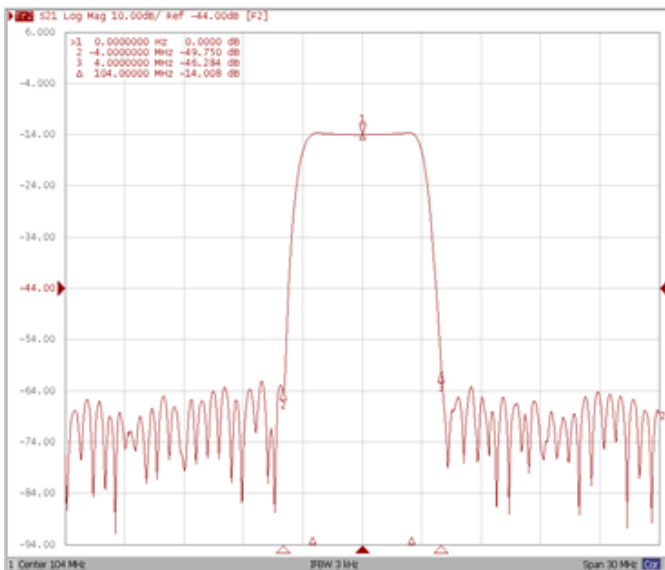
Bandwidth at -1.0 dB

Bandwidth at -40.0 dB



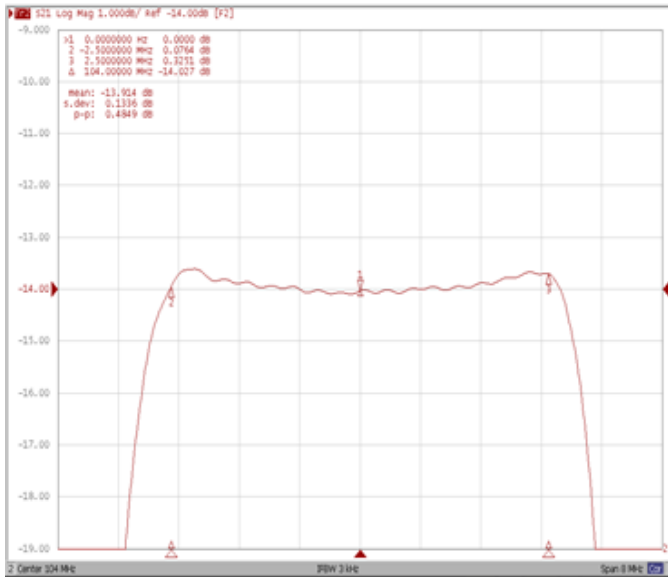
Attenuation Fo±4.0MHz

Wide-Band

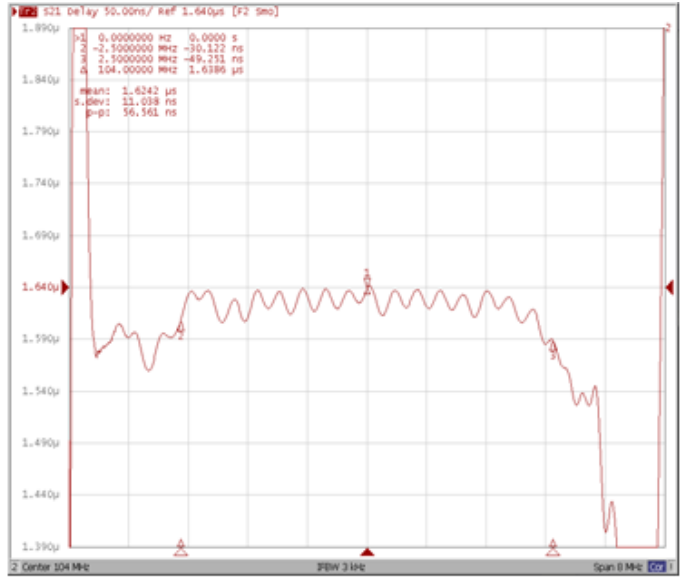


Frequency Response

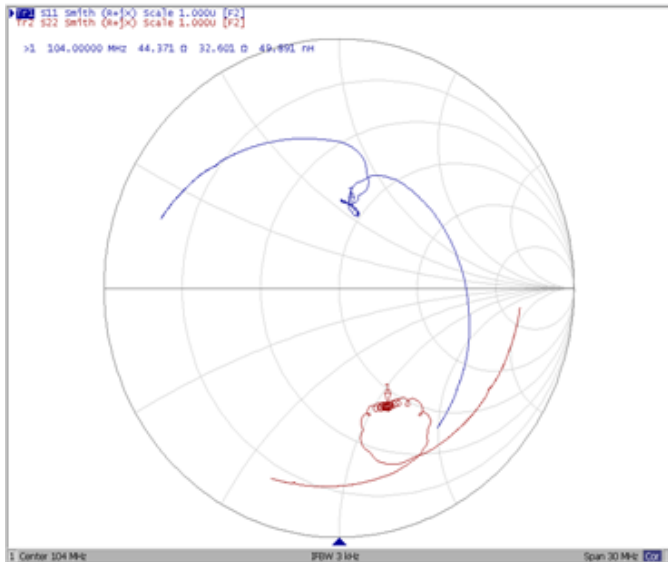
Ripple Variation Fo±2.5MHz



Group Delay Variation Fo±2.5MHz



Smith Chart



SWR

