

- 92.16 MHz IF SAW Filter / 44.04 MHz Bandwidth
- Revision 0: 15 Apr. 2009

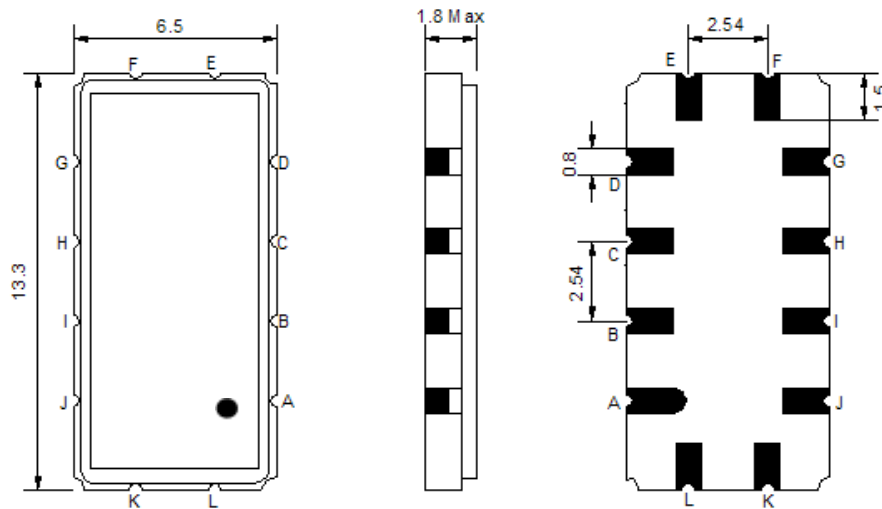
## Electrical Characteristics

MAXIMUM RATING				
PARAMETERS DESCRIPTION	UNIT	MINIMUM	TYPICAL	MAXIMUM
Operating Temperature Range	°C	-20	-	70
Storage Temperature Range	°C	-40	-	85
Maximum DC Voltage	V	-	-	10
Maximum Input Power	dBm	-	-	10
Source Impedance (single ended) <sup>(1)</sup>	Ω	-	50	-
Load Impedance (single ended) <sup>(1)</sup>	Ω	-	50	-
Package type & size	V			
Length x Width	mm <sup>2</sup>	-	13.3 x 6.5	-
Height	mm	-	-	1.8

ELECTRICAL SPECIFICATION				
PARAMETERS DESCRIPTION	UNIT	MINIMUM	TYPICAL	MAXIMUM
Center Frequency (Fo)	MHz	-	92.16	-
Insertion Loss at Fo	dB	-	20.0	22.0
Group Delay Variation (71.0MHz~113.0MHz)	ns	-	17	40
Absolute Delay Time at Fo	us	-	0.98	-
Temperature Coefficient	ppm/°C	-	-86	-
Amplitude Ripple (71.0MHz~113.0MHz)	dB	-	0.50	0.90
Bandwidth at -1dB	MHz	43.50	44.04	-
Bandwidth at -40dB	MHz	-	49.60	50.50
Relative Attenuation:				
@62.0MHz	dB	-	60	-
@121.0MHz	dB	-	55	-
Ultimate Rejection	dB	-	43	-

**Notes :** (1) With Matching Network (Ref. Testing Environment Circuit as shown below).  
Those impedances could be modified with different impedance values and/or structures, if necessary.

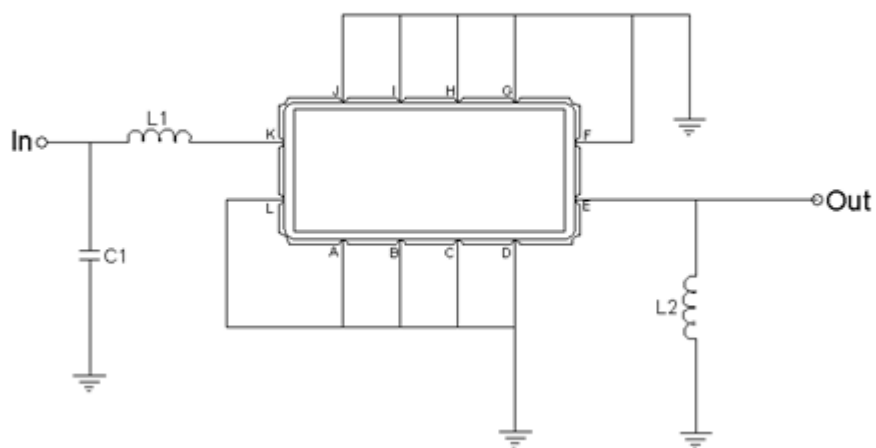
## Package Dimensions



- ① **TRANSKO:** Brand
- ② **TL09244A:** Model Name
- ③ **X :** Date Code (Year)
- ④ **Y :** Date Code (Month)
- ⑤ **Z :** Date Code (Date)
- : Index Dot

Pin Description	
A, B, C, D, F, G, H, I, J, L	Ground
K	Input
E	Output

## Testing Environment

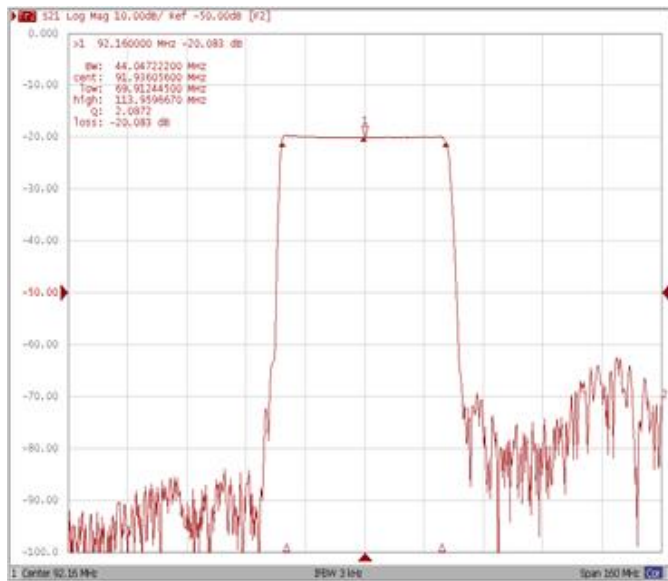


Test Fixture & Values	
Input	L1 = 82 nH, C1=22pF
Output	L2 = 68 nH
Source/Load Impedance	50 Ω

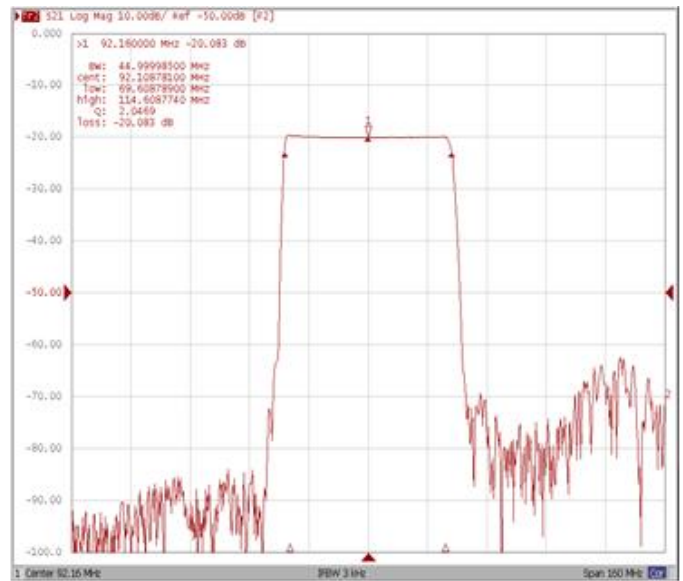
## Frequency Characteristics

### Frequency Response

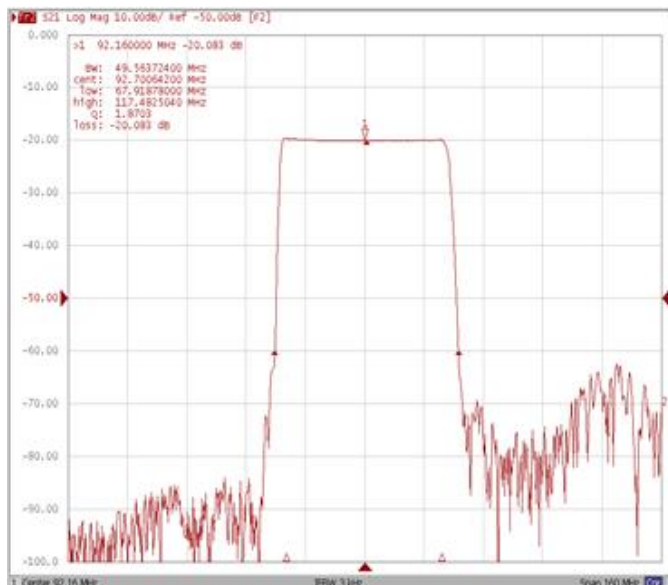
**Bandwidth at -1.0 dB**



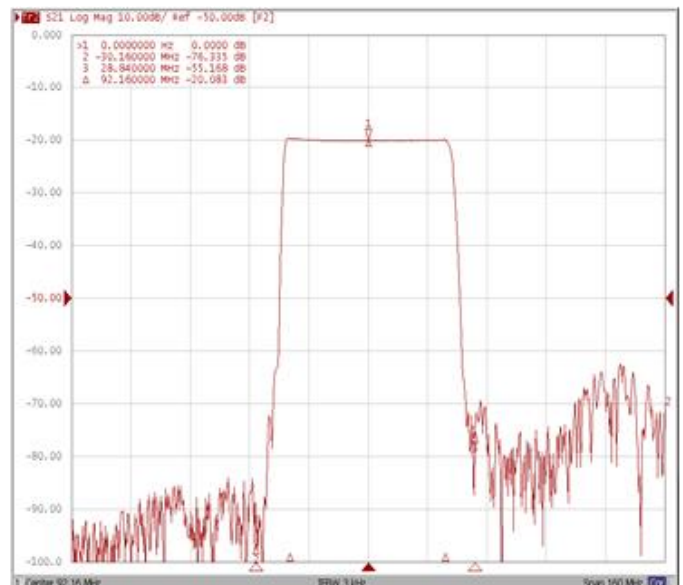
**Bandwidth at -3.0 dB**



**Bandwidth at -40.0 dB**

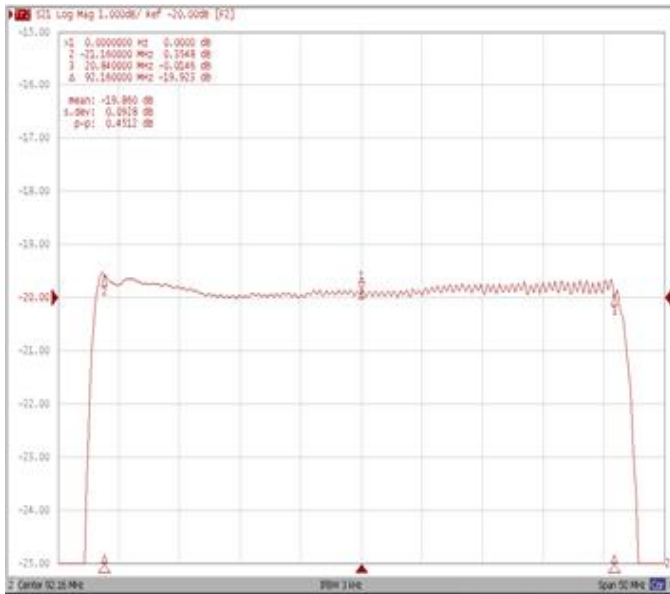


**Relative Attenuation 62MHz / 121MHz**

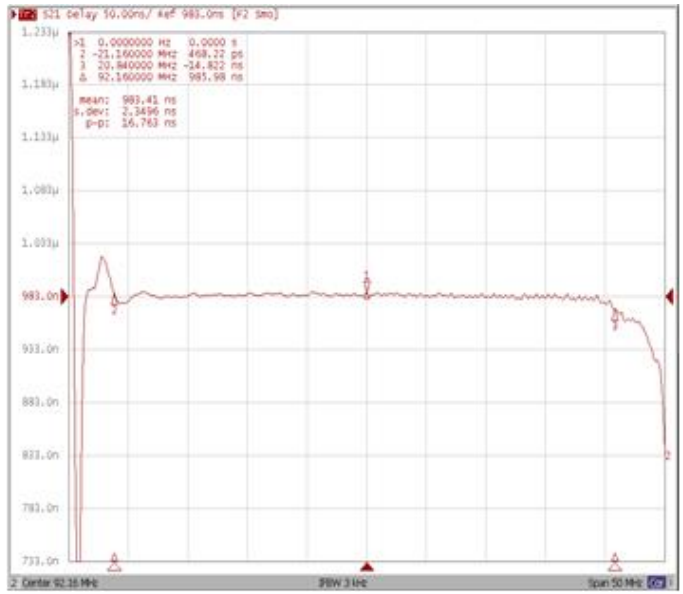


## Frequency Response

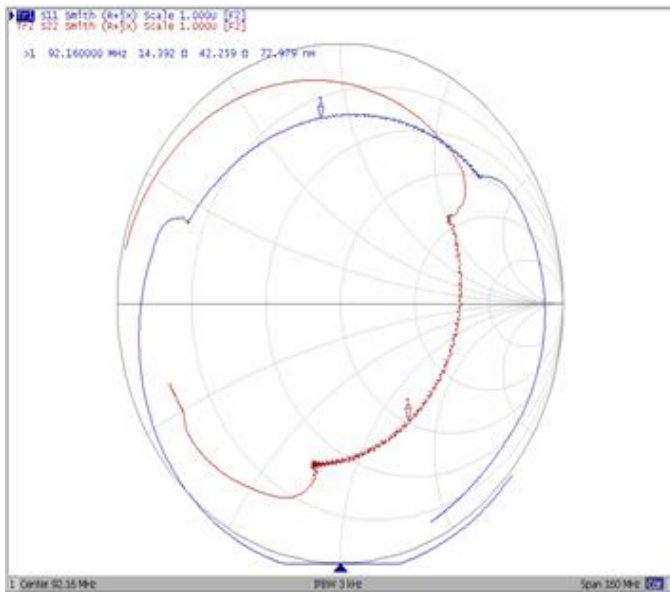
**Ripple Variation (71.0MHz~113.0MHz)**



**Group Delay Variation (71.0MHz~113.0MHz)**



**Smith Chart**



**VSWR**

