

- 75.00 MHz IF SAW Filter / 7.67 MHz Bandwidth
- Revision 0: 13 Oct. 2008

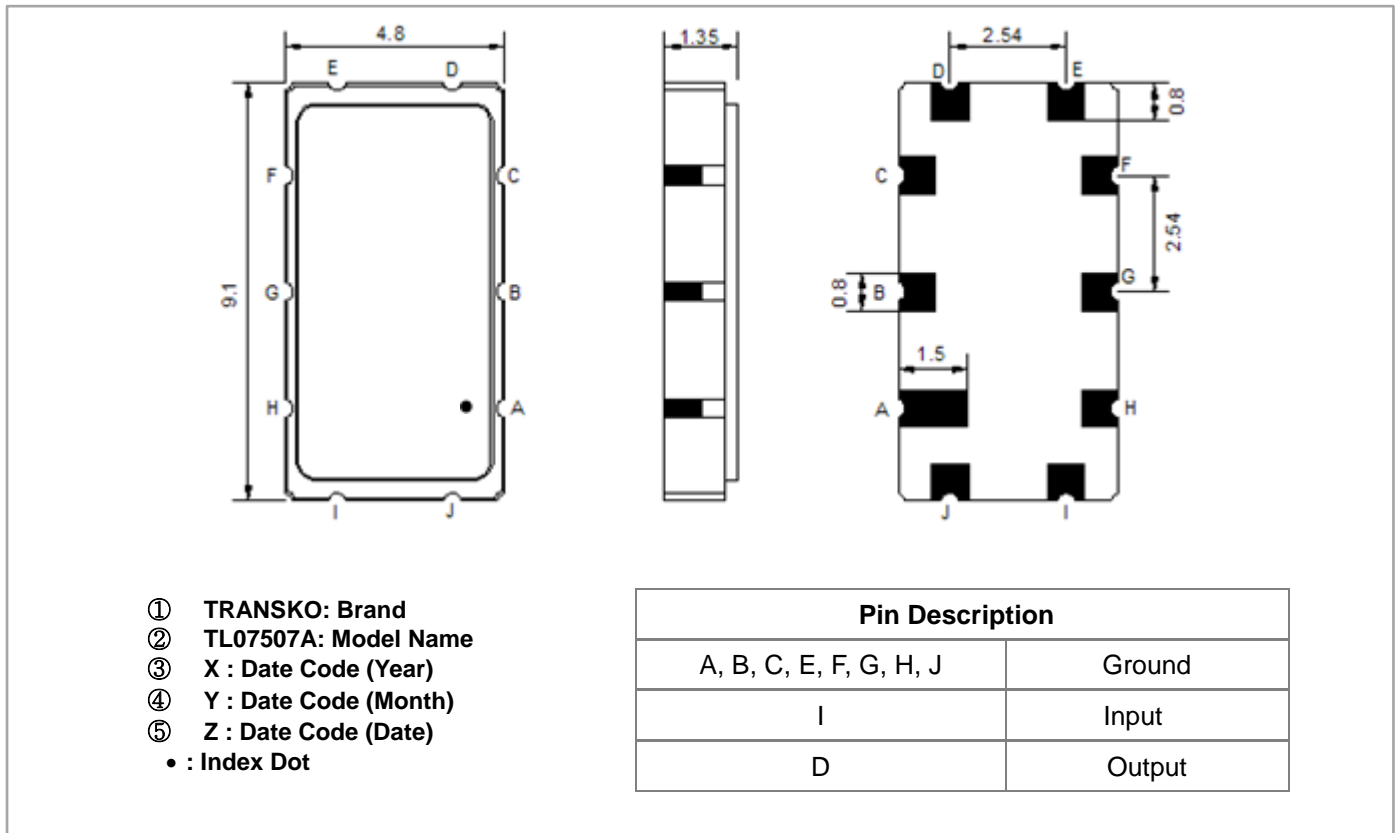
Electrical Characteristics

MAXIMUM RATING				
Parameters Description	Unit	Minimum	Typical	Maximum
Operating Temperature Range	°C	-30	-	80
Storage Temperature Range	°C	-40	-	85
Maximum DC Voltage	V	-	-	10
Maximum Input Power	dBm	-	-	10
Source Impedance (single ended) ⁽¹⁾	Ω	-	50	-
Load Impedance (single ended) ⁽¹⁾	Ω	-	50	-
Package type & size	T			
Length x Width	mm ²	-	9.1 x 4.8	-
Height	mm	-	-	1.5

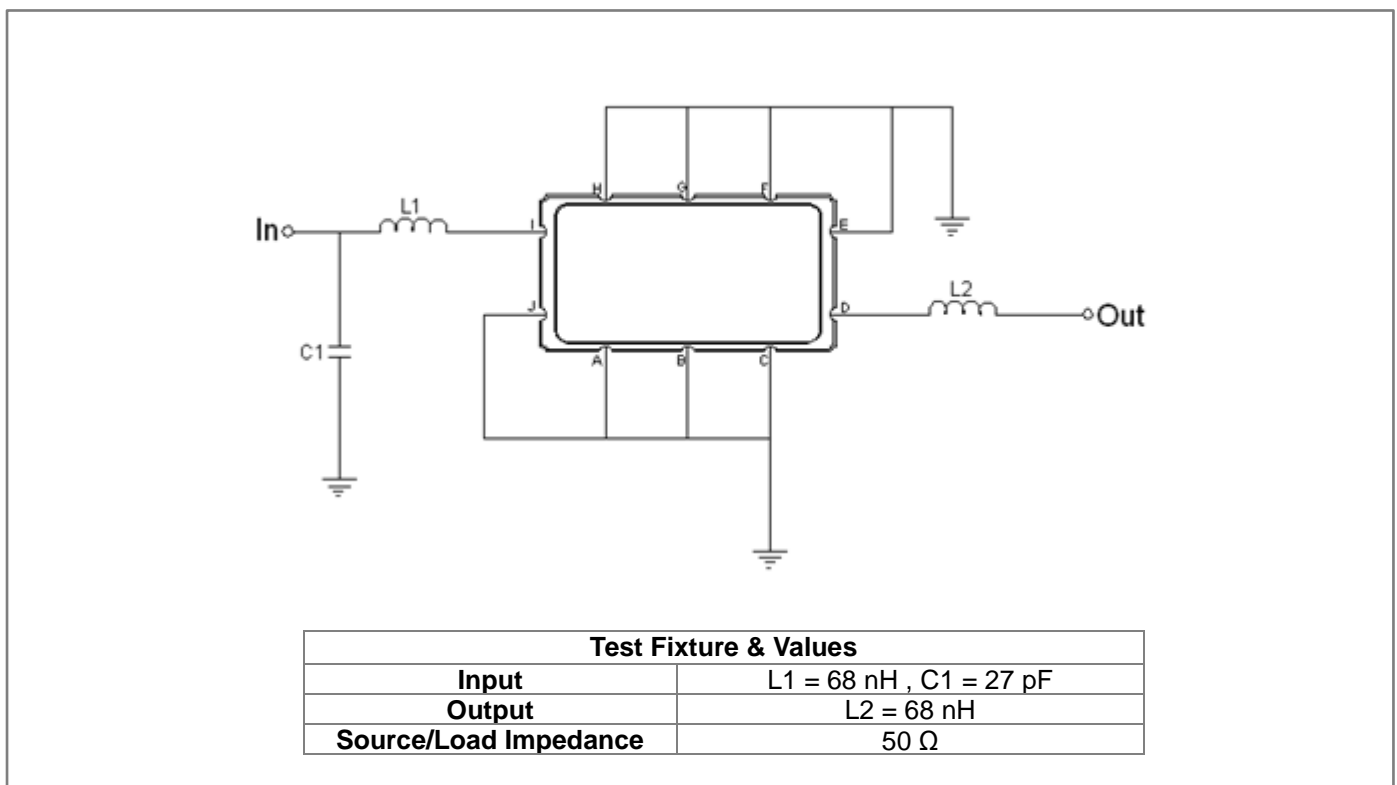
ELECTRICAL SPECIFICATION				
Parameters Description	Unit	Minimum	Typical	Maximum
Center Frequency (Fo)	MHz	-	75.0	-
Insertion Loss at Fo	dB	-	10.00	13.00
Temperature Coefficient	ppm/°C	-	-86	-
Amplitude Ripple Variation (Fo±3.15MHz)	dB _{p-p}	-	0.4	0.9
Group Delay Variation (Fo±3.15MHz)	nsec	-	55	100
Absolute Delay at Fo	µsec	-	0.85	-
Bandwidth at -1.0 dB	MHz	-	7.67	-
Bandwidth at -3.0 dB	MHz	-	8.56	-
Bandwidth at -30.0 dB	MHz	-	11.60	-
VSWR	-	-	4.0	-

Notes : (1) With Matching Network (Ref. Testing Environment Circuit as shown below).
Those impedances could be modified with different impedance values and/or structures, if necessary.

Package Dimensions



Testing Environment

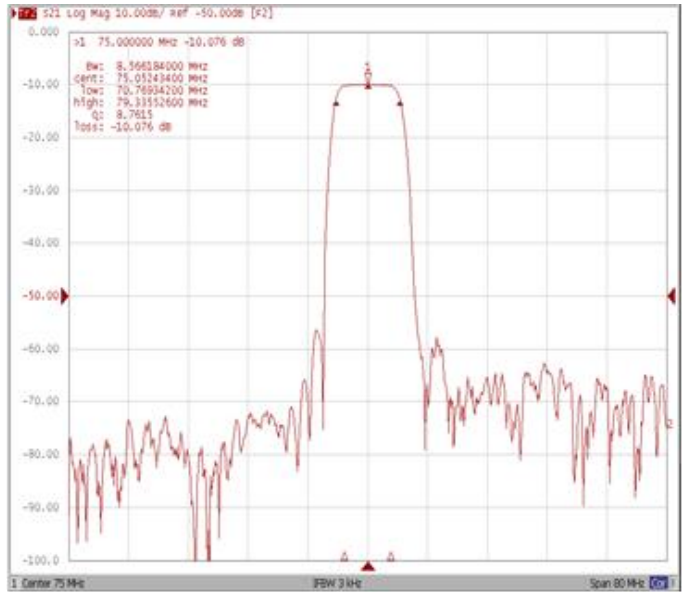
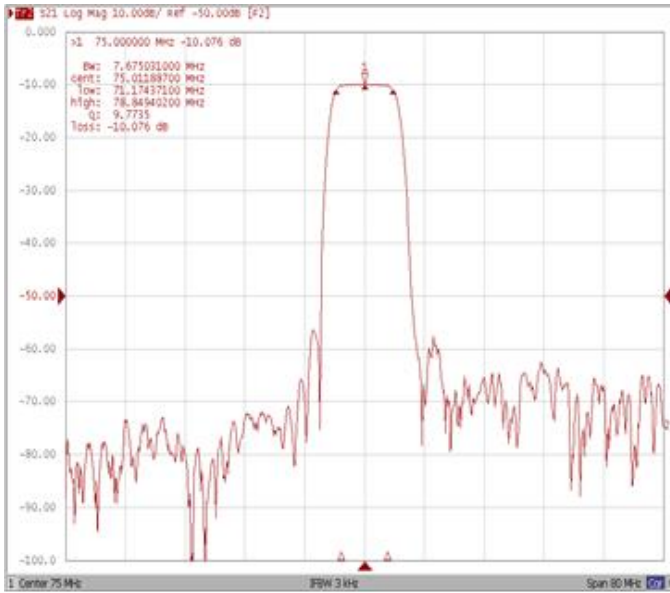


Frequency Characteristics

Frequency Response

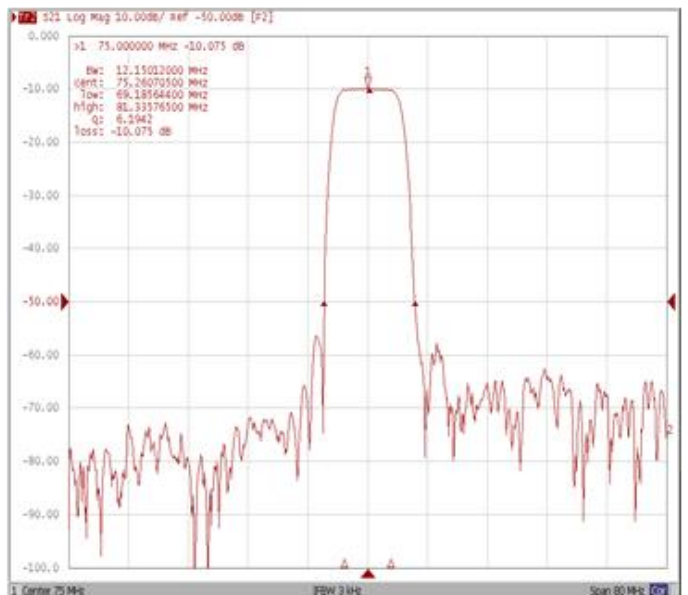
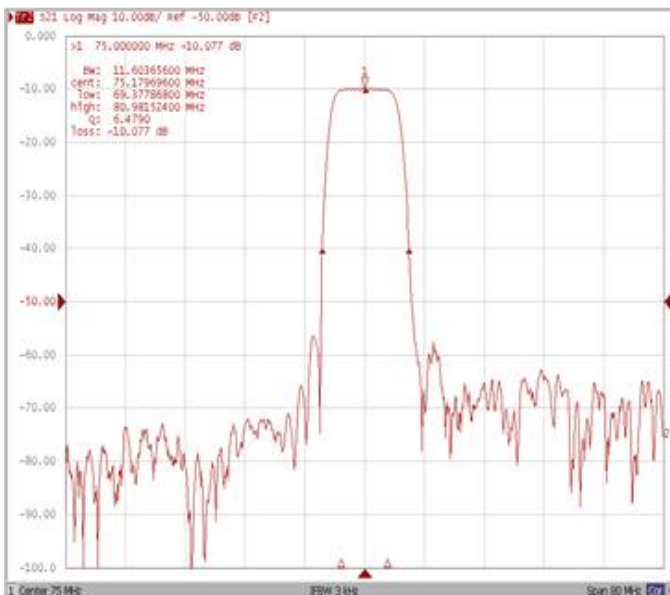
Bandwidth at -1.0 dB

Bandwidth at -3.0 dB



Bandwidth at -30.0 dB

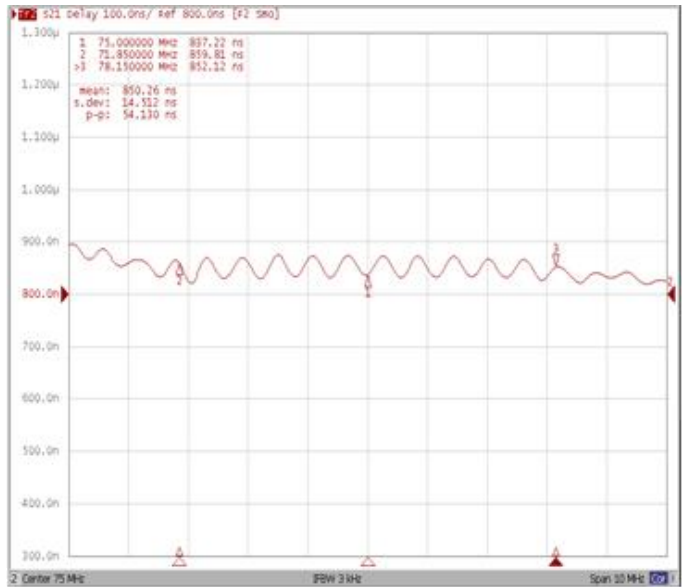
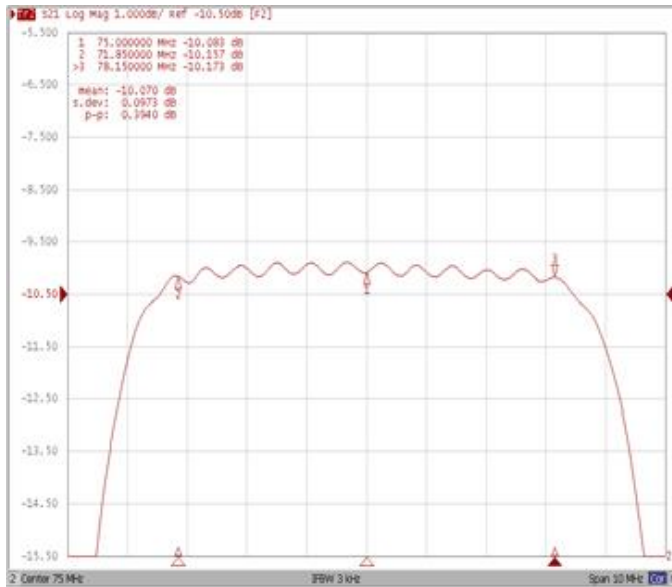
Bandwidth at -40.0 dB



Frequency Response

Ripple Variation Fo±3.15MHz

Group Delay Variation Fo±3.15MHz



Smith Chart

VSWR

