

- 75.00 MHz IF SAW Filter / 5.59 MHz Bandwidth
- Revision 0: 13 Oct. 2008

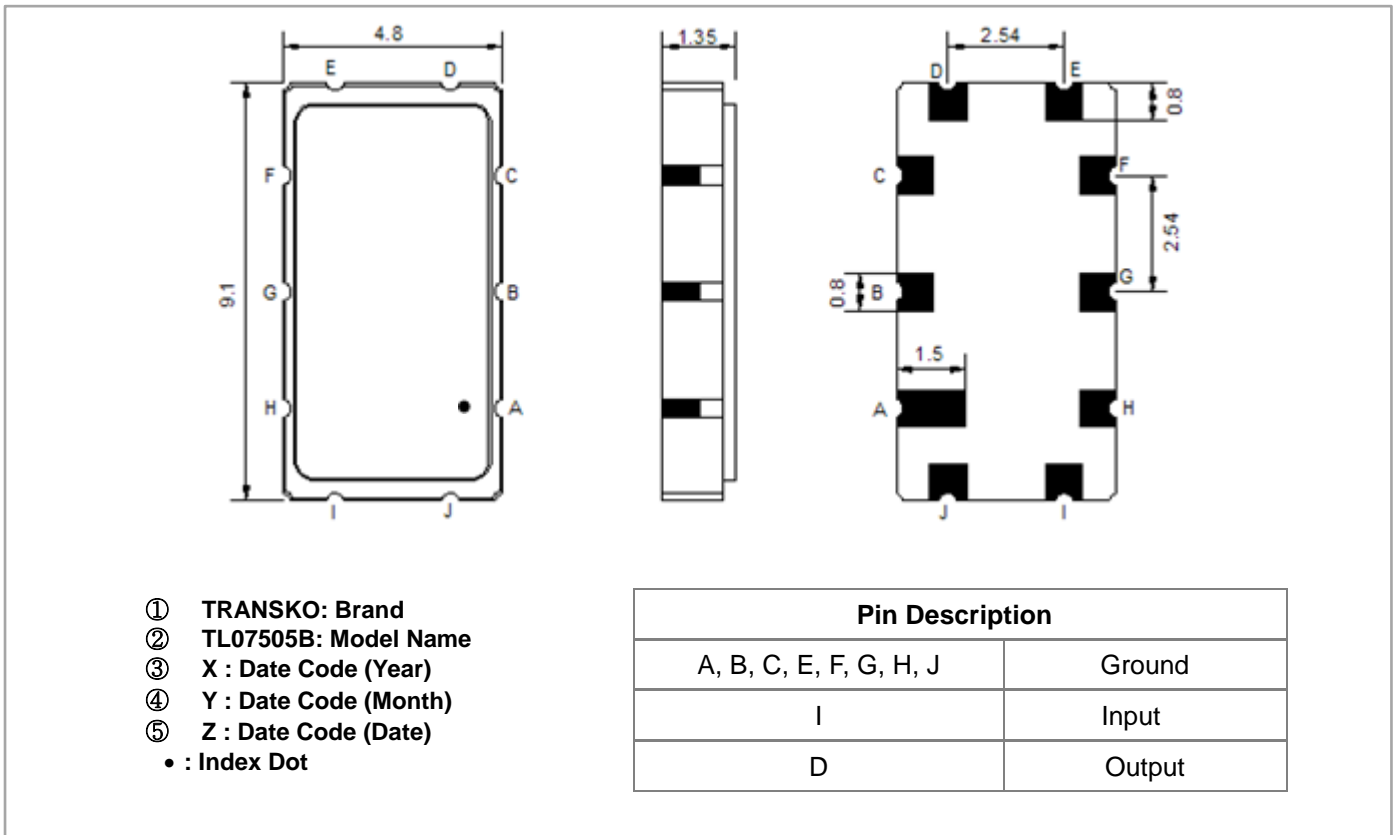
## Electrical Characteristics

MAXIMUM RATING				
Parameters Description	Unit	Minimum	Typical	Maximum
Operating Temperature Range	°C	-30	-	80
Storage Temperature Range	°C	-40	-	85
Maximum DC Voltage	V	-	-	10
Maximum Input Power	dBm	-	-	10
Source Impedance (single ended) <sup>(1)</sup>	Ω	-	50	-
Load Impedance (single ended) <sup>(1)</sup>	Ω	-	50	-
Package type & size	T			
Length x Width	mm <sup>2</sup>	-	9.1 x 4.8	-
Height	mm	-	-	1.5

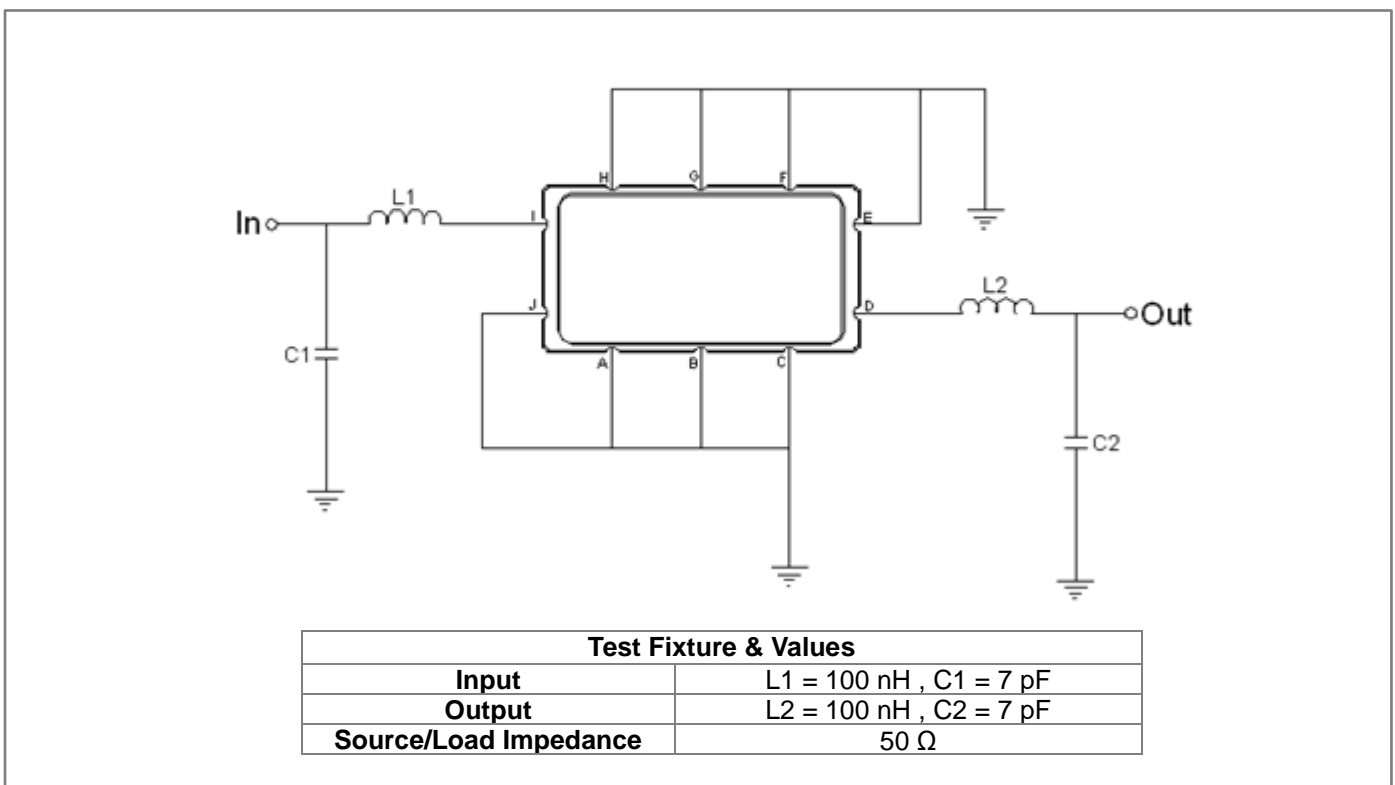
ELECTRICAL SPECIFICATION				
Parameters Description	Unit	Minimum	Typical	Maximum
Center Frequency (Fo)	MHz	-	75.0	-
Insertion Loss at Fo	dB	-	8.9	12.00
Temperature Coefficient	ppm/°C	-	-86	-
Amplitude Ripple Variation (Fo±1.94MHz)	dB <sub>p-p</sub>	-	0.4	0.9
Group Delay Variation (Fo±1.94MHz)	nsec	-	56	100
Absolute Delay at Fo	µsec	-	0.8	-
Bandwidth at -1.0 dB	MHz	-	5.6	-
Bandwidth at -3.0 dB	MHz	-	6.6	-
Bandwidth at -30.0 dB	MHz	-	9.92	-
VSWR	-	-	3.8	-

**Notes :** (1) With Matching Network (Ref. Testing Environment Circuit as shown below).  
Those impedances could be modified with different impedance values and/or structures, if necessary.

## Package Dimensions



## Testing Environment

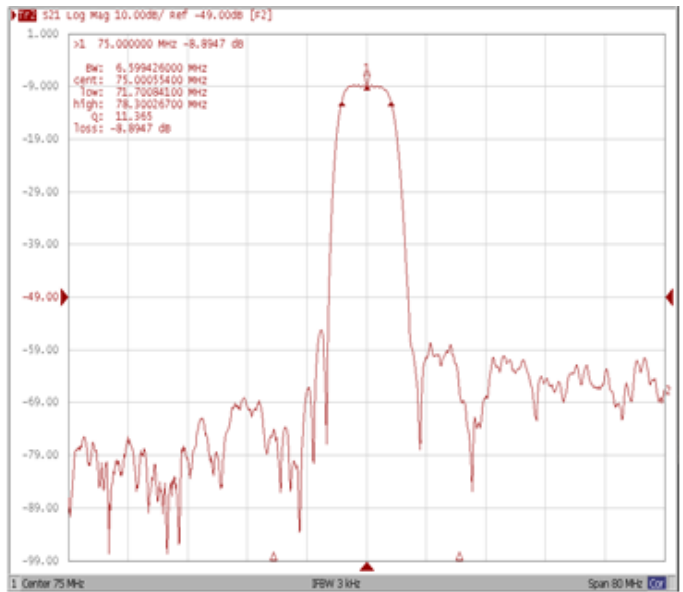
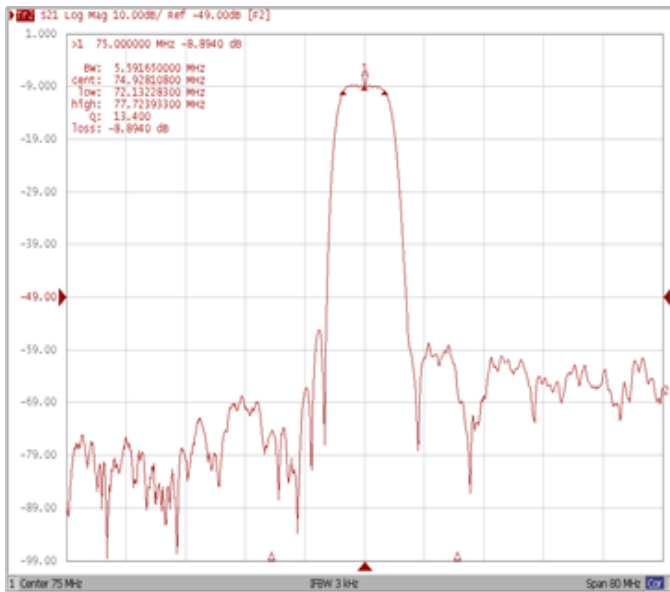


## Frequency Characteristics

### Frequency Response

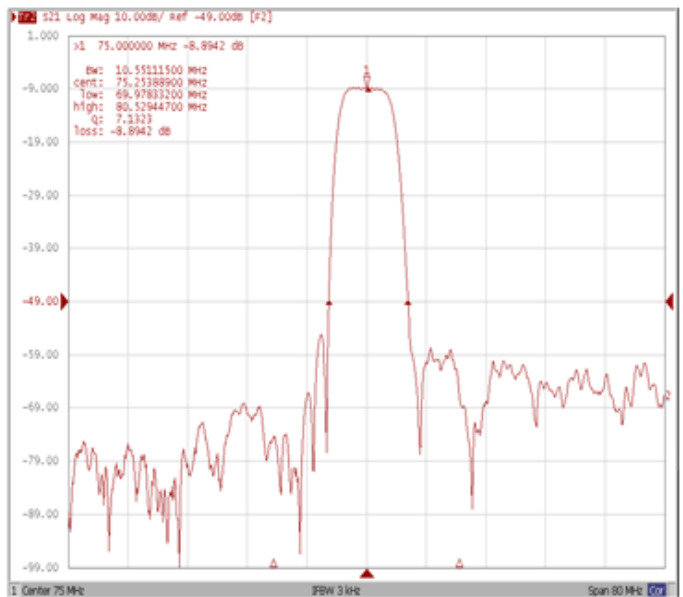
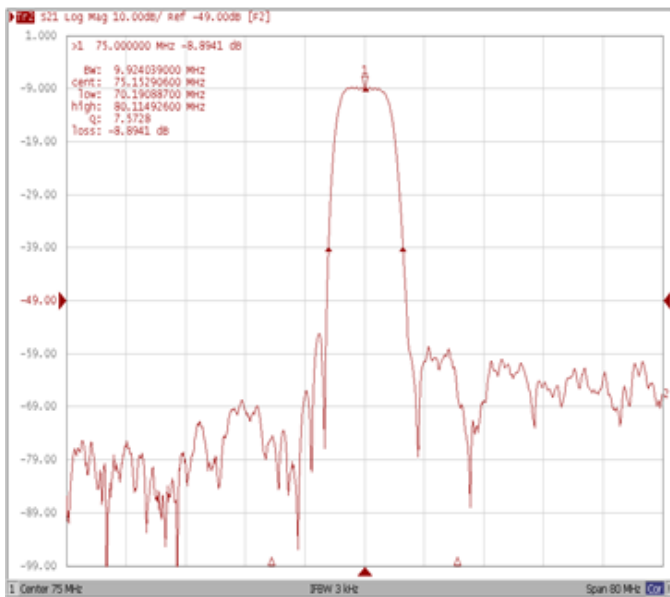
**Bandwidth at -1.0 dB**

**Bandwidth at -3.0 dB**



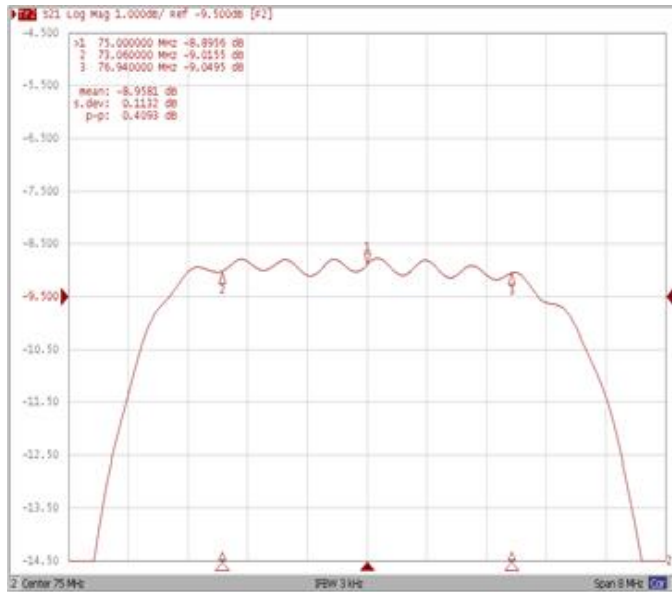
**Bandwidth at -30.0 dB**

**Bandwidth at -40.0 dB**

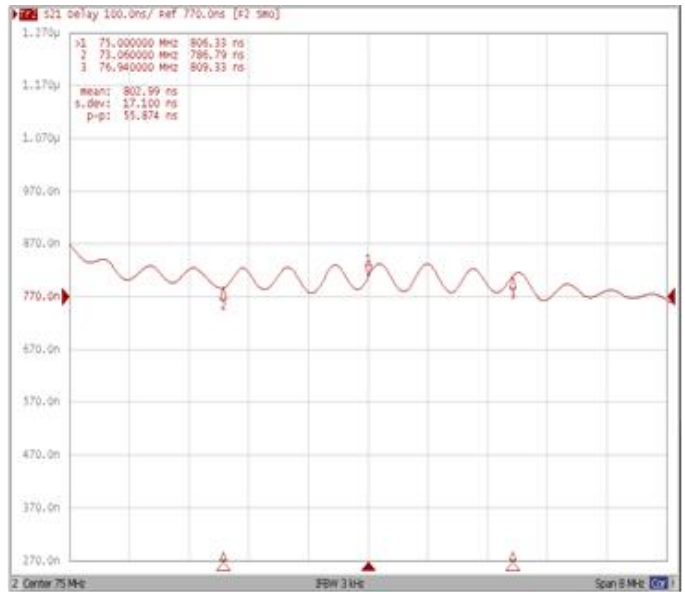


**Frequency Response**

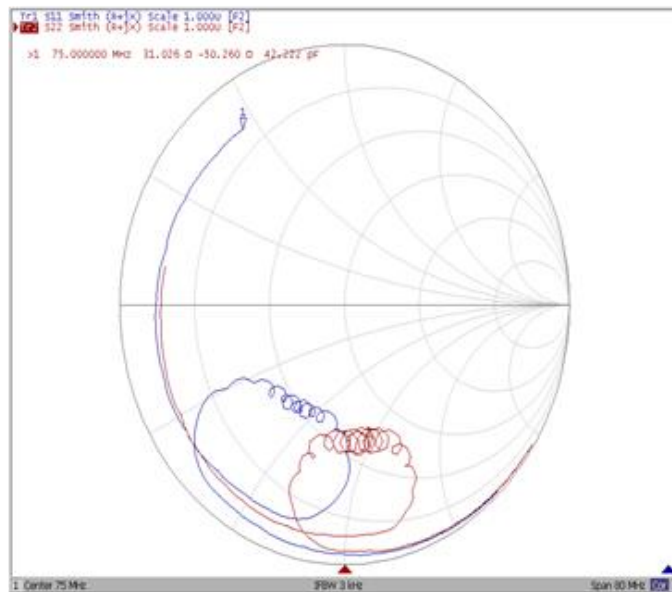
**Ripple Variation Fo±1.94MHz**



**Group Delay Variation Fo±1.94MHz**



**Smith Chart**



**VSWR**

