

- 75.00 MHz IF SAW Filter / 4.73 MHz Bandwidth
- Revision 0: 26 Nov. 2008

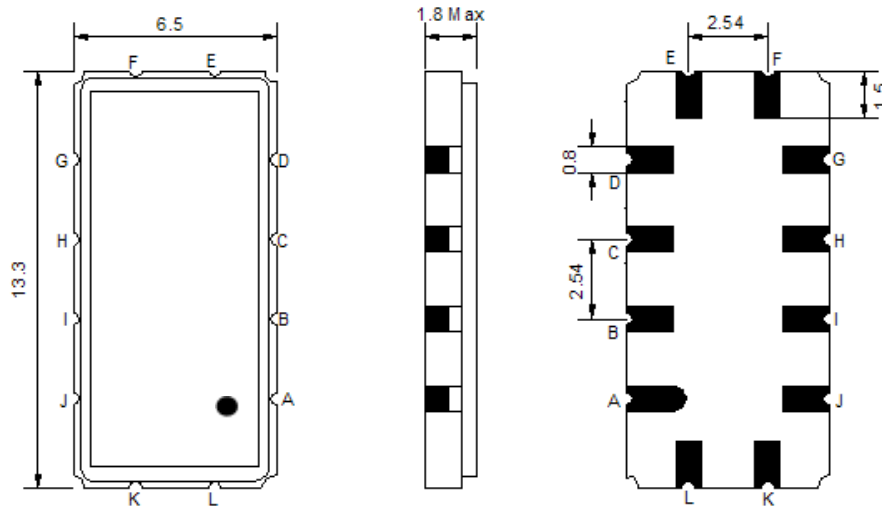
## Electrical Characteristics

MAXIMUM RATING				
PARAMETERS DESCRIPTION	UNIT	MINIMUM	TYPICAL	MAXIMUM
Operating Temperature Range	°C	-	25	-
Storage Temperature Range	°C	-40	-	85
Maximum DC Voltage	V	-	-	10
Maximum Input Power	dBm	-	-	10
Source Impedance (single ended) <sup>(1)</sup>	Ω	-	50	-
Load Impedance (single ended) <sup>(1)</sup>	Ω	-	50	-
Package type & size	V			
Length x Width	mm <sup>2</sup>	-	13.3 x 6.5	-
Height	mm	-	-	1.8

ELECTRICAL SPECIFICATION				
PARAMETERS DESCRIPTION	UNIT	MINIMUM	TYPICAL	MAXIMUM
Center Frequency (Fo)	MHz	-	75.0	-
Insertion Loss at Fo	dB	-	13.0	15.0
Temperature Coefficient	ppm/°C	-	-20	-
Amplitude Ripple within fo ±2.0 MHz	dB <sub>p-p</sub>	-	0.3	0.8
Group Delay Variation within fo ±2.0 MHz	nsec	-	50	80
Absolute Delay at Fo	µsec	-	1.58	-
Bandwidth at -1.0 dB	MHz	-	4.73	-
Bandwidth at -3.0 dB	MHz	-	5.25	-
Bandwidth at -30.0 dB	MHz	-	6.8	-
Bandwidth at -40.0 dB	MHz	-	7.0	-
Ultimate Attenuation:	-	40	45	-

**Notes :** (1) With Matching Network (Ref. Testing Environment Circuit as shown below).  
Those impedances could be modified with different impedance values and/or structures, if necessary.

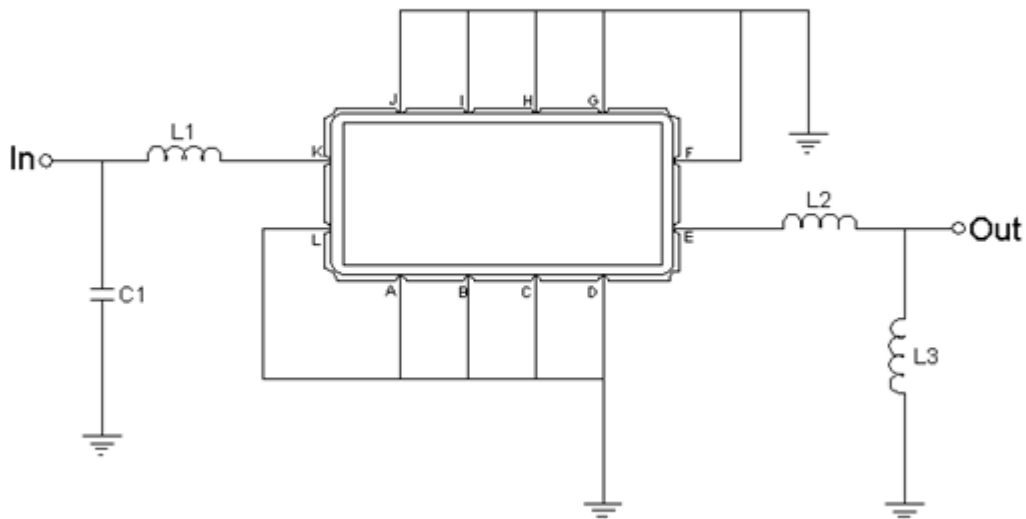
## Package Dimensions



- ① **TRANSKO:** Brand
- ② **TL07504A:** Model Name
- ③ **X :** Date Code (Year)
- ④ **Y :** Date Code (Month)
- ⑤ **Z :** Date Code (Date)
- : Index Dot

Pin Description	
A, B, C, D, F, G, H, I, J, L	Ground
K	Input
E	Output

## Testing Environment



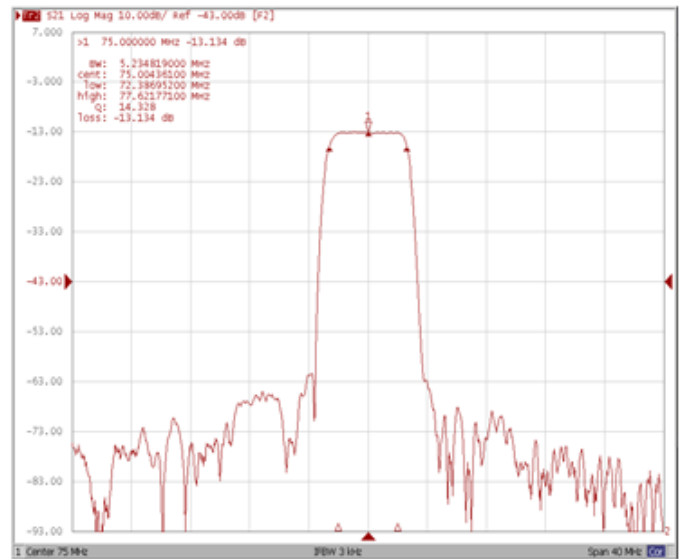
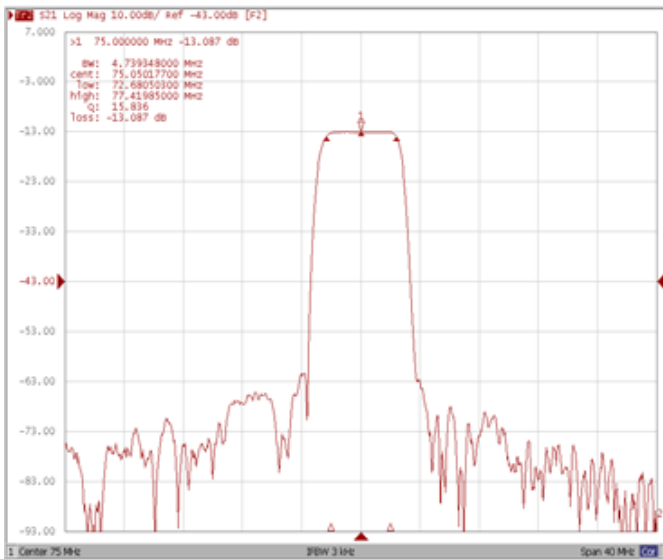
Test Fixture & Values	
Input	L1=56nH , C1=150pF
Output	L2=3.9nH , L3=33nH
Source/Load Impedance	50 Ω

## Frequency Characteristics

### Frequency Response

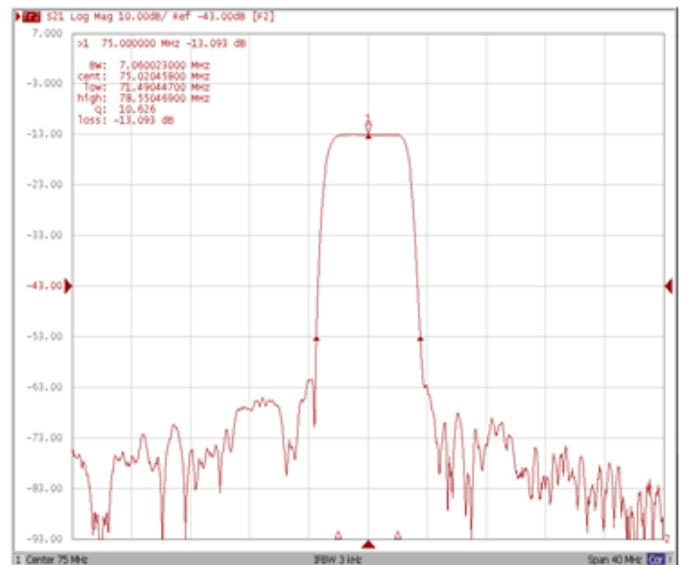
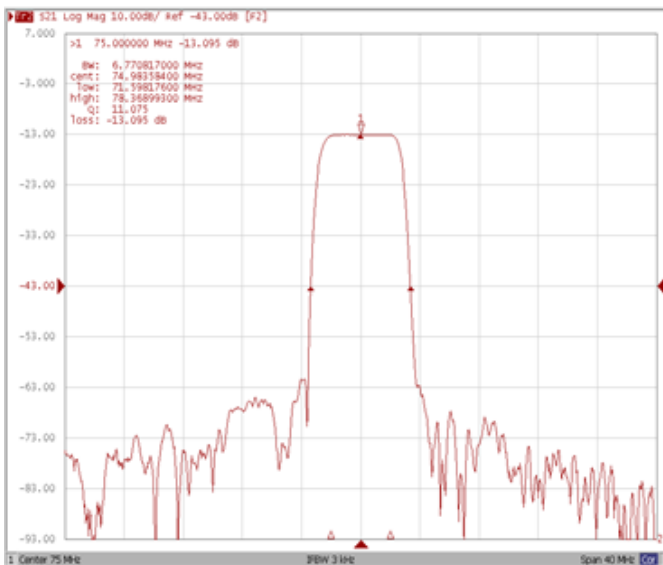
**Bandwidth at -1.0 dB**

**Bandwidth at -3.0 dB**



**Bandwidth at -30.0 dB**

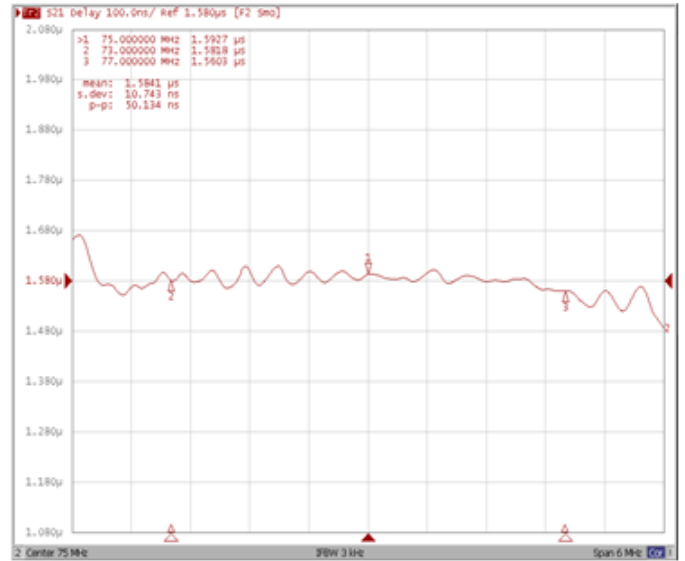
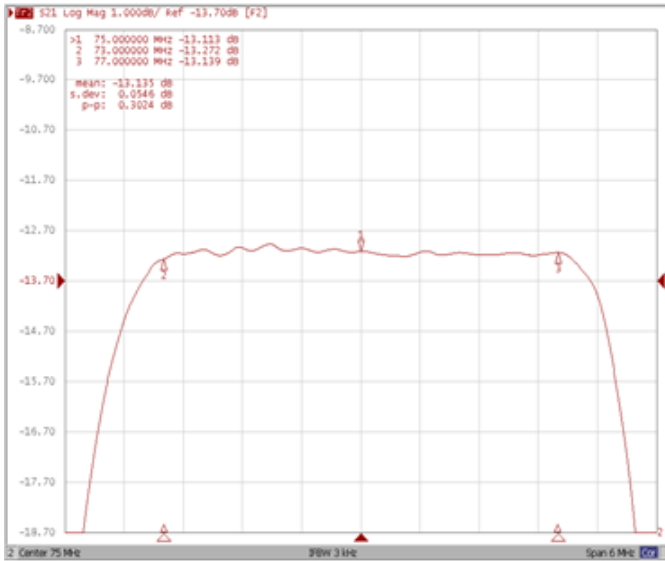
**Bandwidth at -40.0 dB**



## Frequency Response

**Ripple Variation Fo±2.0MHz**

**Group Delay Variation Fo±2.0MHz**



**Smith Chart**

**VSWR**

