

- 55.00 MHz IF SAW Filter / 20.28 MHz Bandwidth
- Revision 0: 01 Dec. 2009

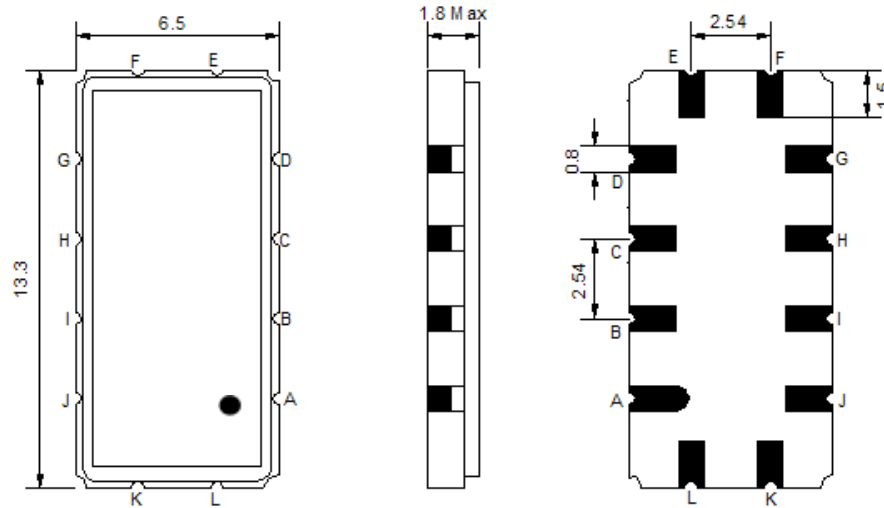
Electrical Characteristics

MAXIMUM RATING				
PARAMETERS DESCRIPTION	UNIT	MINIMUM	TYPICAL	MAXIMUM
Operating Temperature Range	°C	-	25	-
Storage Temperature Range	°C	-40	-	85
Maximum DC Voltage	V	-	-	10
Maximum Input Power	dBm	-	-	10
Source Impedance (single ended) ⁽¹⁾	Ω	-	50	-
Load Impedance (single ended) ⁽¹⁾	Ω	-	50	-
Package type & size	V			
Length x Width	mm ²	-	13.3 x 6.5	-
Height	mm	-	-	1.8

ELECTRICAL SPECIFICATION				
PARAMETERS DESCRIPTION	UNIT	MINIMUM	TYPICAL	MAXIMUM
Center Frequency (Fo)	MHz	54.90	55.00	55.10
Insertion Loss at Fo	dB	-	14.90	17.00
Group Delay Variation (Fo±9.32MHz)	ns	-	22	50
Absolute Delay Time at Fo	us	-	0.99	-
Amplitude Ripple (Fo±9.32MHz)	dB	-	0.25	0.90
Bandwidth at -1dB	MHz	20.00	20.28	-
Bandwidth at -3dB	MHz	-	21.20	-
Bandwidth at -40dB	MHz	-	24.89	25.50
Ultimate Rejection	dB	40	44	-
Temperature Coefficient	ppm/°C	-	-86	-

Notes : (1) With Matching Network (Ref. Testing Environment Circuit as shown below).
Those impedances could be modified with different impedance values and/or structures, if necessary.

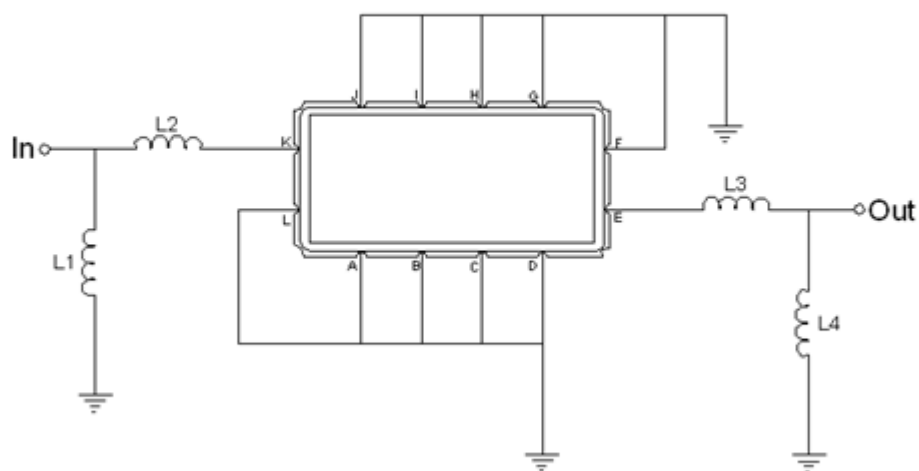
Package Dimensions



- ① **TRANSKO:** Brand
- ② **TL05520A:** Model Name
- ③ **X :** Date Code (Year)
- ④ **Y :** Date Code (Month)
- ⑤ **Z :** Date Code (Date)
- : Index Dot

Pin Description	
A, B, C, D, F, G, H, I, J, L	Ground
K	Input
E	Output

Testing Environment

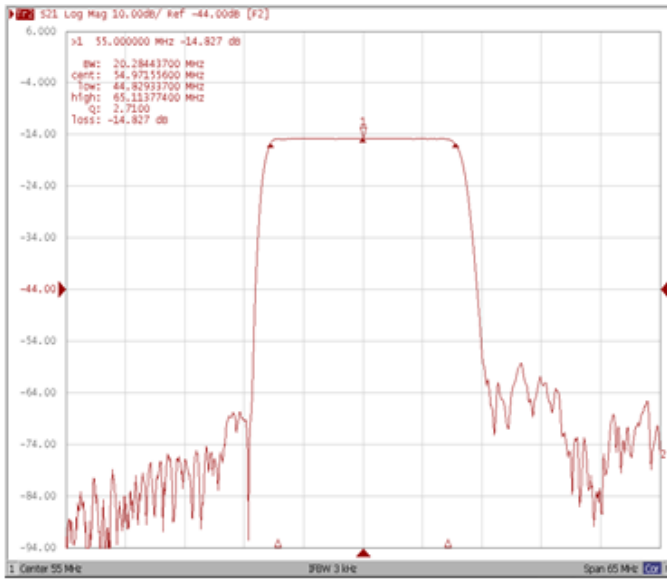


Test Fixture & Values	
Input	L1 = 150 nH , L2 = 82 nH
Output	L3 = 120 nH , L4 = 270 nH
Source/Load Impedance	50 Ω

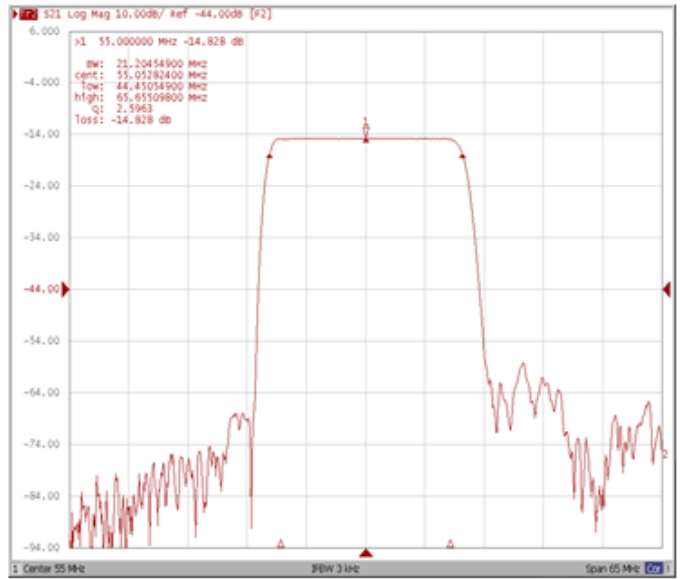
Frequency Characteristics

Frequency Response

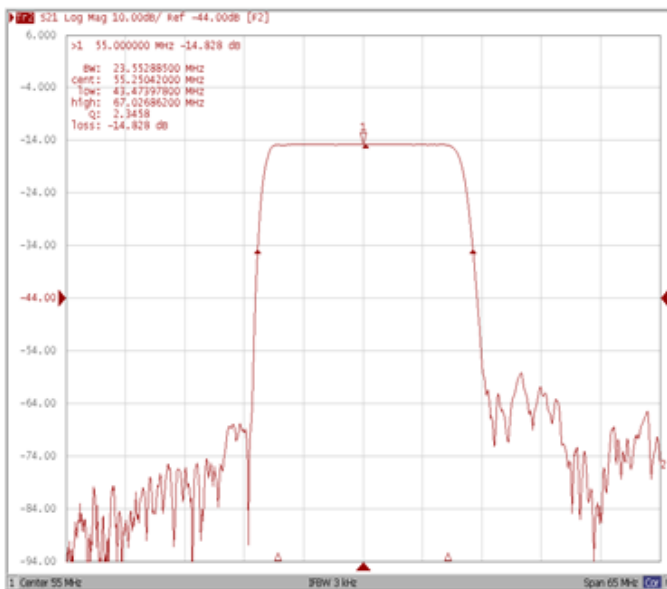
Bandwidth at -1.0 dB



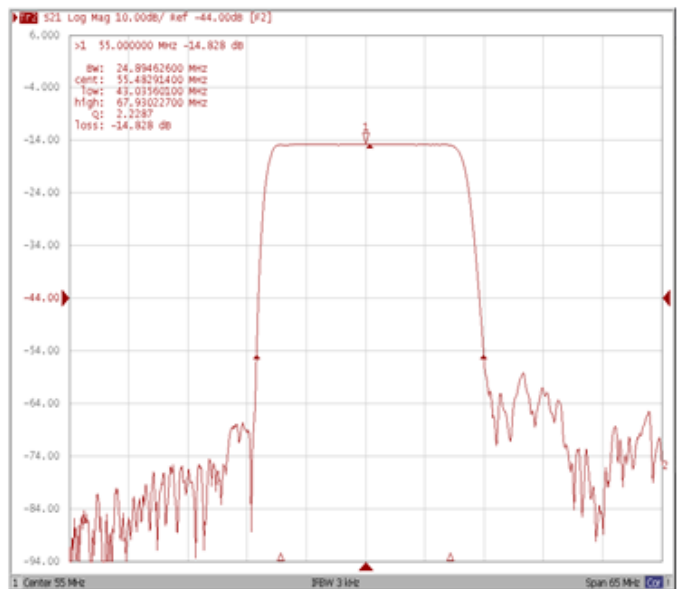
Bandwidth at -3.0 dB



Bandwidth at -20.0 dB



Bandwidth at -40.0 dB



Frequency Response

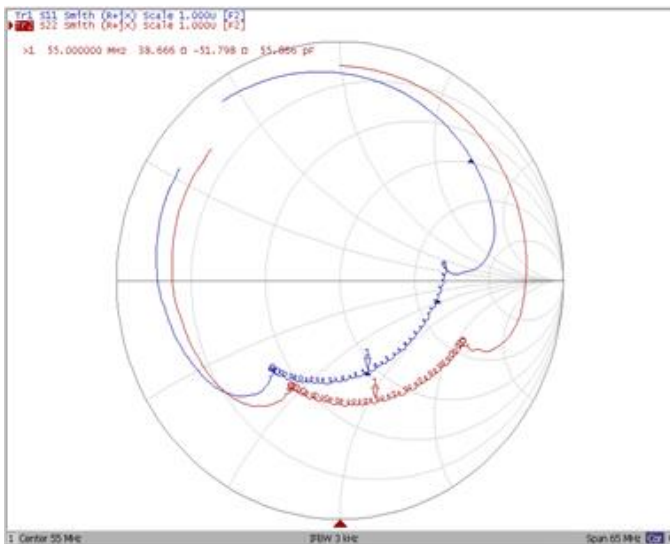
Ripple Variation Fo±9.32 MHz



Group Delay Variation Fo±9.32 MHz



Smith Chart



VSWR

