

- 70.00 MHz IF SAW Filter / 25.20 MHz Bandwidth
- Revision 0: 09 Jan. 2013

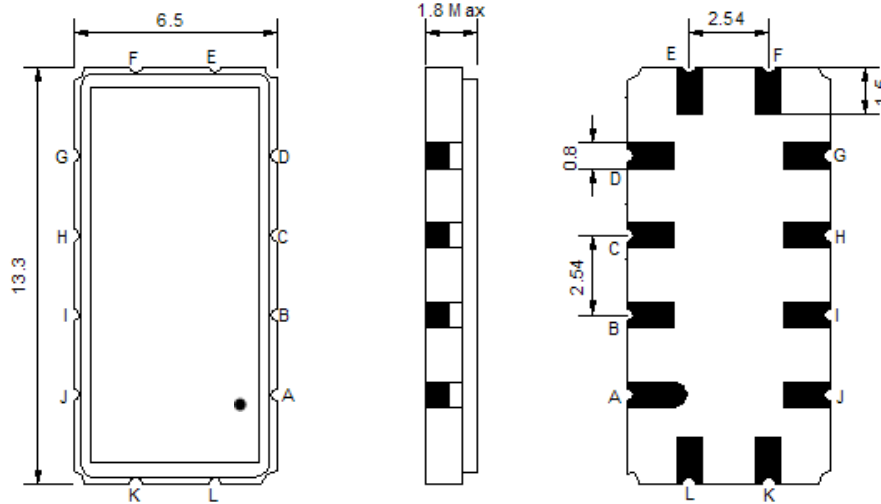
Electrical Characteristics

MAXIMUM RATING				
PARAMETERS DESCRIPTION	UNIT	MINIMUM	TYPICAL	MAXIMUM
Operation Temperature Range	°C	-30	-	80
Storage Temperature Range	°C	-40	-	85
Maximum DC Voltage	V	-	-	10
Maximum Input Power	dBm	-	-	10
Source Impedance (single ended) ⁽¹⁾	Ω	-	50	-
Load Impedance (single ended) ⁽¹⁾	Ω	-	50	-
Package type & size	S90			
Length x Width	mm ²	-	13.3 x 6.5	-
Height	mm	-	-	1.8

ELECTRICAL SPECIFICATION				
PARAMETERS DESCRIPTION	UNIT	MINIMUM	TYPICAL	MAXIMUM
Center Frequency (Fo)	MHz	-	70.00	-
Insertion Loss at Fo	dB	-	15.50	18.00
Group Delay Variation at Fo ± 11.0 MHz	nsec	-	13	50
Absolute Delay at Fo	usec	-	0.95	1.10
Passband Ripple Variation at Fo ± 11.0 MHz	dB _{p-p}	-	0.3	0.9
Bandwidth at -1dB	MHz	24.50	25.20	-
Bandwidth at -3dB	MHz	-	26.25	-
Bandwidth at -40dB	MHz	-	30.75	31.30
Ultimate Rejection	dB	40	45	-
Relative Attenuation:				
Fo ± 17.0 MHz	dB	40	48	-
Temperature Coefficient	ppm/°C	-	-86	-

Notes : (1) With Matching Network (Ref. Testing Environment Circuit as shown below).
Those impedances could be modified with different impedance values and/or structures, if necessary.

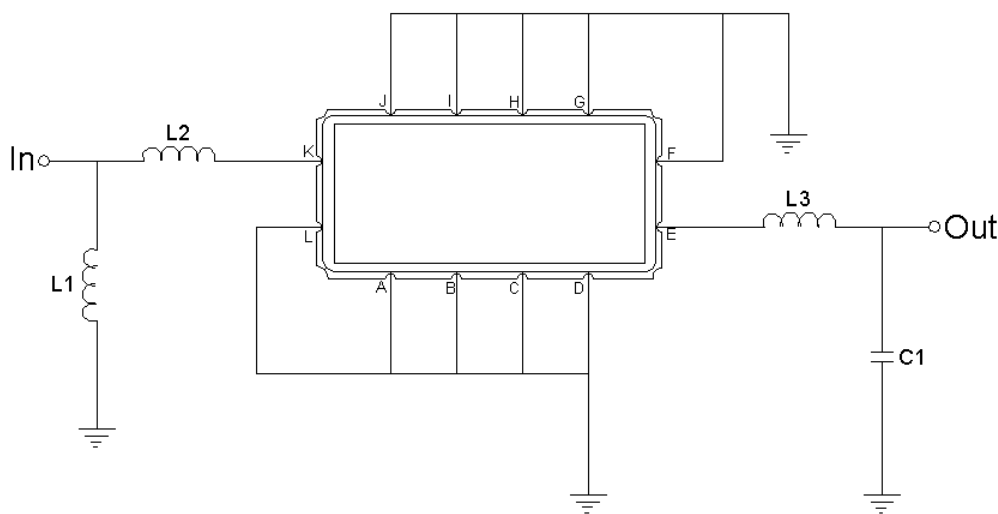
Package Dimensions



- ① **TRANSKO**: Brand
- ② **TF-007005**: Model Name
- ③ **X** : Date Code (Year)
- ④ **Y** : Date Code (Month)
- ⑤ **Z** : Date Code (Date)
- : Index Dot

Pin Description	
A, B, C, D, F, G, H, I, J, L	Ground
K	Input
E	Output

Testing Environment



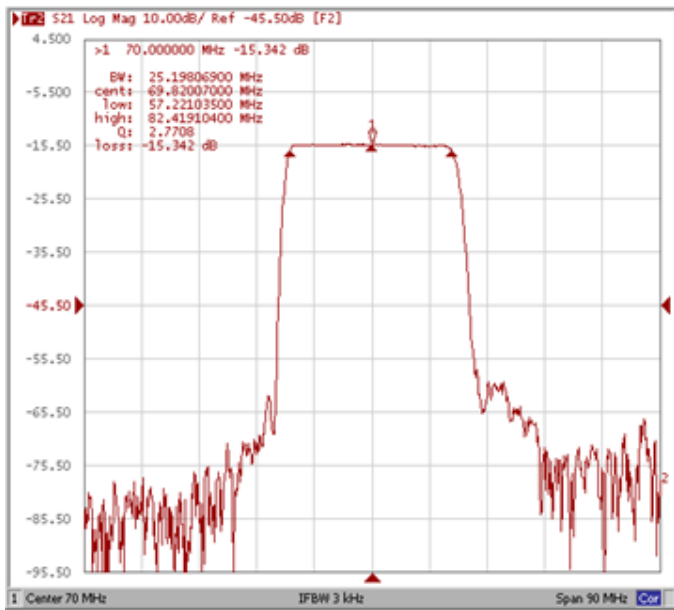
Test Fixture & Values	
Input	L1 = 150nH, L2 = 47nH
Output	L3 = 150nH, C1 = 24pF
Source/Load Impedance	50 Ω

Frequency Characteristics

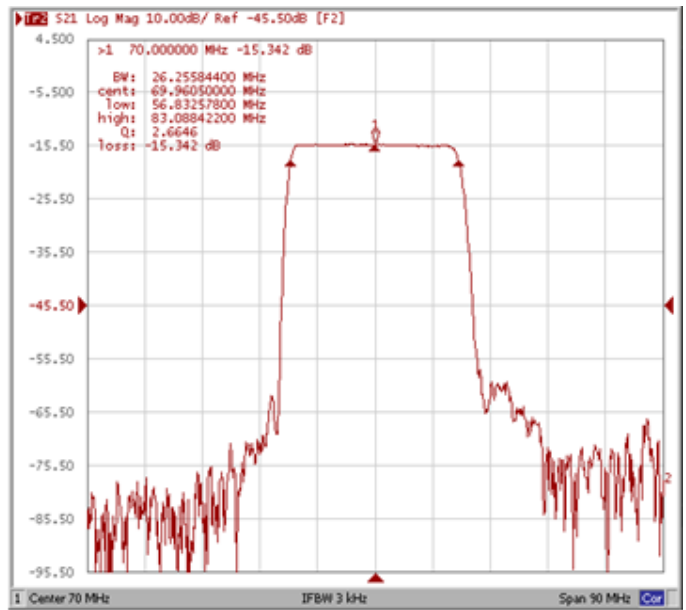
Frequency Response

Operating Temperature: +25°C

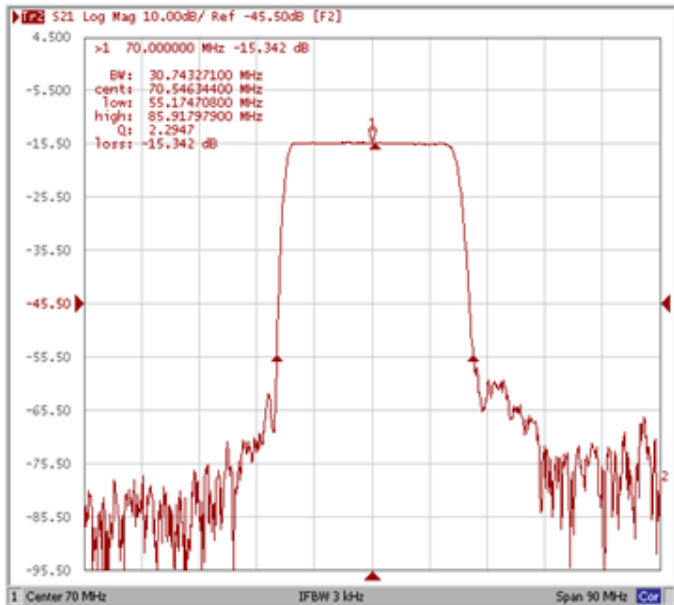
Bandwidth at -1.0 dB



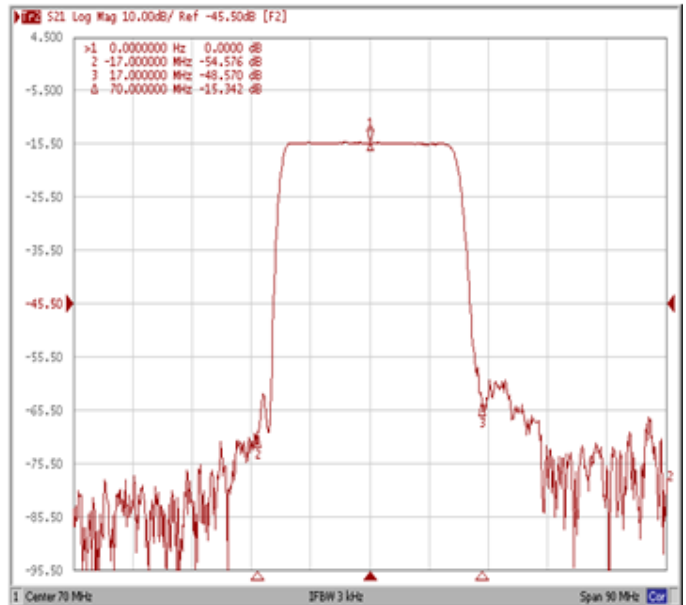
Bandwidth at -3.0 dB



Bandwidth at -40.0 dB

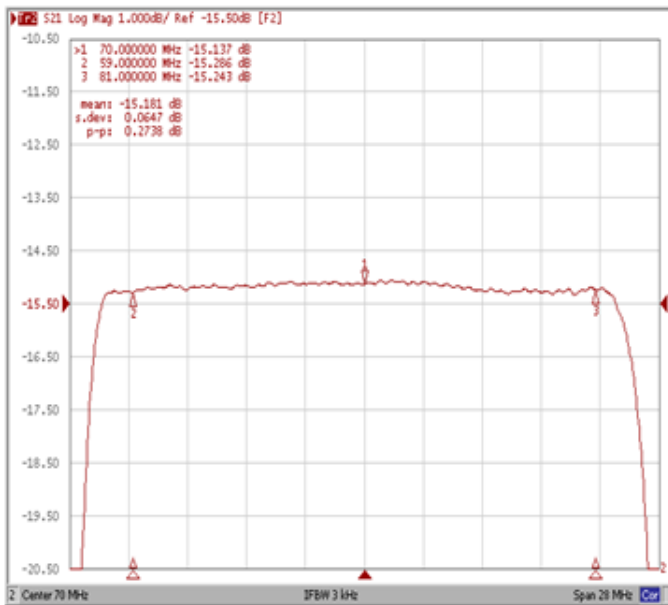


Relative Attenuation Fo ± 17.0 MHz

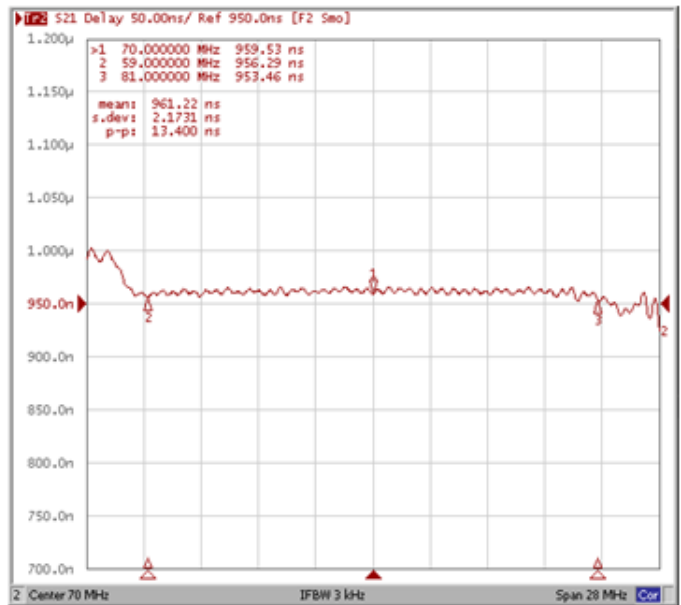


Frequency Response

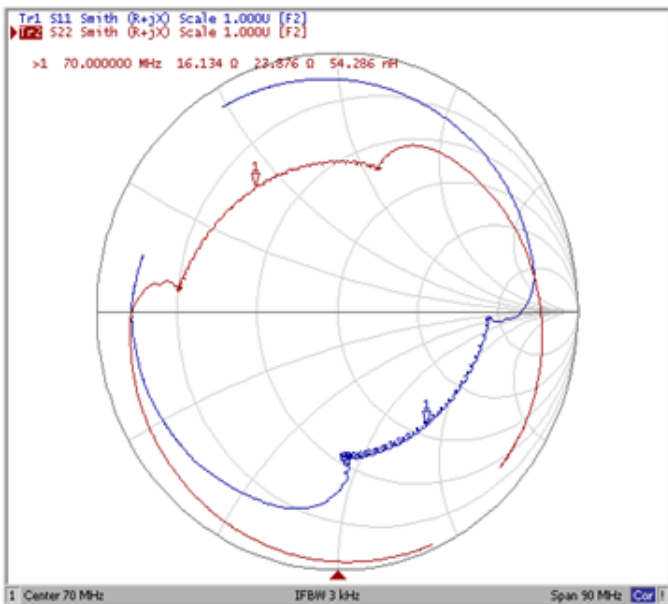
Ripple Variation Fo±11.0MHz



Group Delay Variation Fo±11.0MHz



Smith Chart



VSWR

