

- 54.90 MHz IF SAW Filter / 9.25 MHz Bandwidth
- Revision 0: 29 Nov. 2012

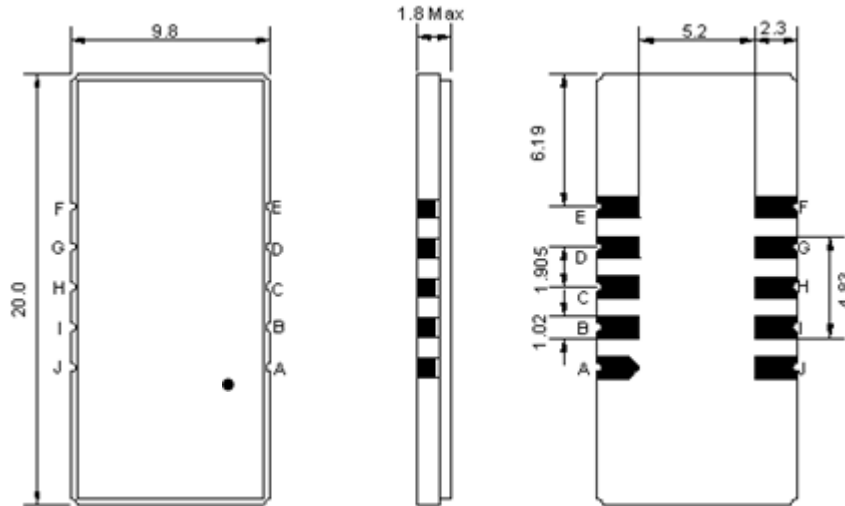
Electrical Characteristics

MAXIMUM RATING				
PARAMETERS DESCRIPTION	UNIT	MINIMUM	TYPICAL	MAXIMUM
Operation Temperature Range	°C	-	25	-
Storage Temperature Range	°C	-40	-	85
Maximum DC Voltage	V	-	-	10
Maximum Input Power	dBm	-	-	10
Source Impedance (single ended) ⁽¹⁾	Ω	-	50	-
Load Impedance (single ended) ⁽¹⁾	Ω	-	50	-
Package type & size	SC0			
Length x Width	mm ²	-	20.0 x 9.8	-
Height	mm	-	-	1.8

ELECTRICAL SPECIFICATION				
PARAMETERS DESCRIPTION	UNIT	MINIMUM	TYPICAL	MAXIMUM
Center Frequency (Fo)	MHz	-	54.9	-
Insertion Loss at Fo	dB	-	22.0	23.5
Group Delay Variation at Fo ± 4.42 MHz	nsec	-	50	100
Absolute Delay at Fo	usec	-	2.27	-
Passband Ripple Variation at Fo ± 4.42 MHz	dB	-	0.45	1.2
Bandwidth at -1dB	MHz	9.10	9.25	-
Bandwidth at -3dB	MHz	-	9.55	-
Bandwidth at -45dB	MHz	-	10.87	11.00
Ultimate Rejection	dB	45	52	-
Temperature Coefficient	ppm/°C	-	-72	-

Notes : (1) With Matching Network (Ref. Testing Environment Circuit as shown below).
Those impedances could be modified with different impedance values and/or structures, if necessary.

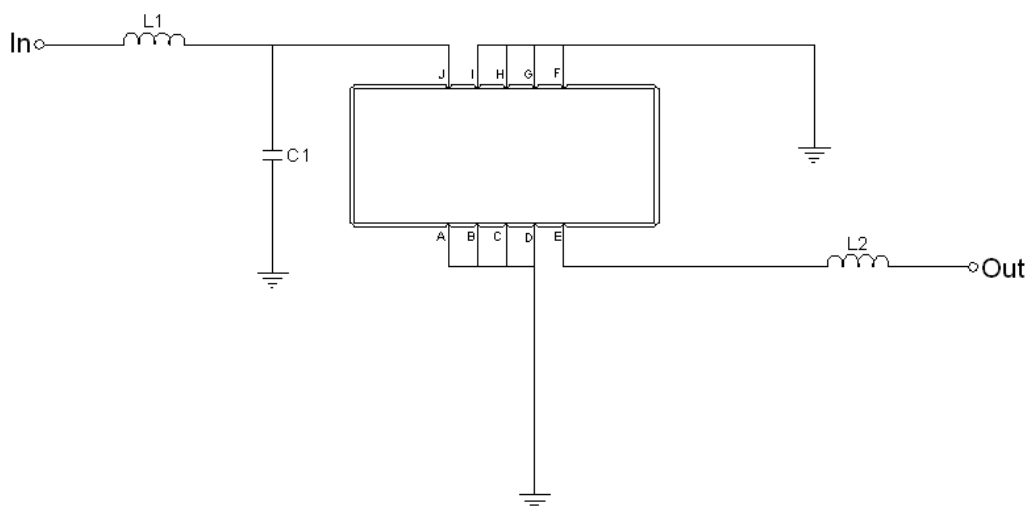
Package Dimensions



- ① **TRANSKO:** Brand
- ② **TF-005401:** Model Name
- ③ **X :** Date Code (Year)
- ④ **Y :** Date Code (Month)
- ⑤ **Z :** Date Code (Date)
- : Index Dot

Pin Description	
A, B, C, D, F, G, H, I	Ground
J	Input
E	Output

Testing Environment



Test Fixture & Values	
Input	L1 = 100nH, C1=30pF
Output	L2 = 100nH
Source/Load Impedance	50 Ω

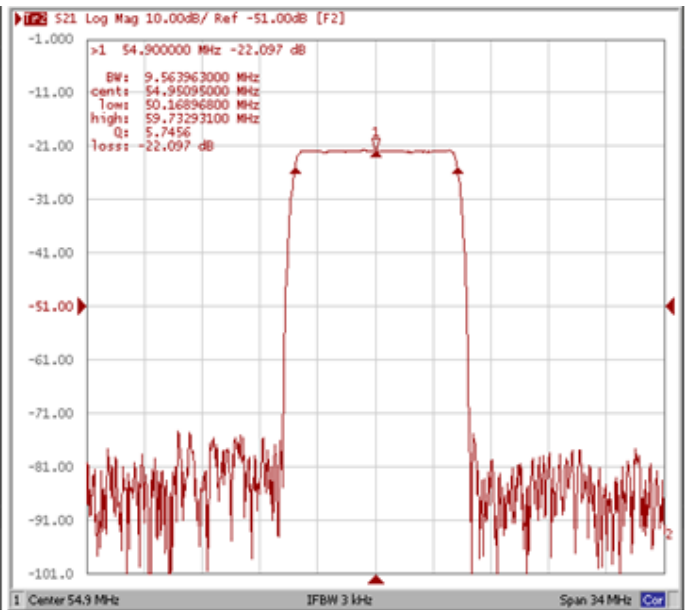
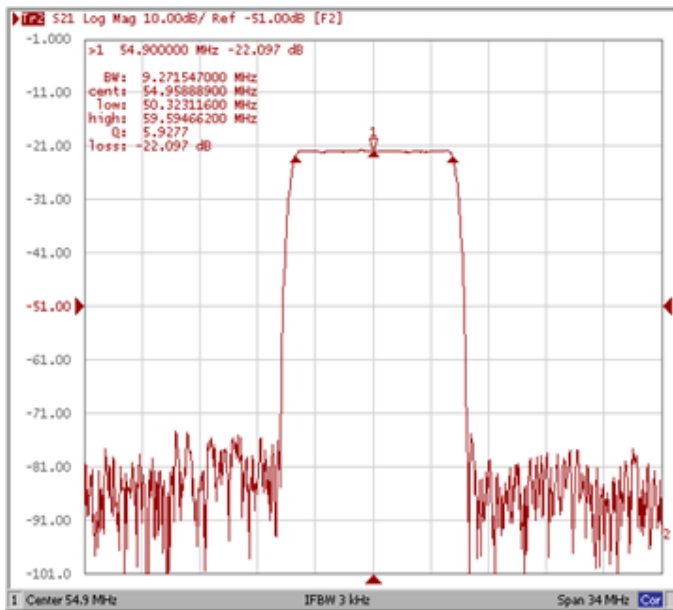
Frequency Characteristics

Frequency Response

Operating Temperature: +25°C

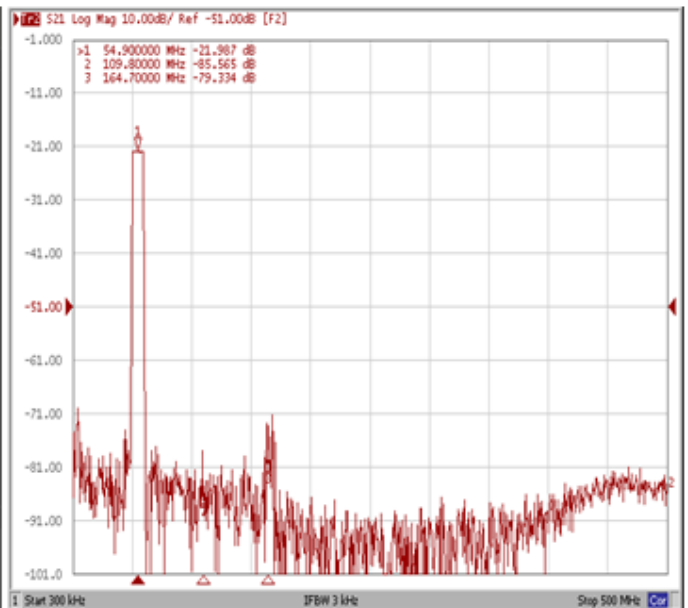
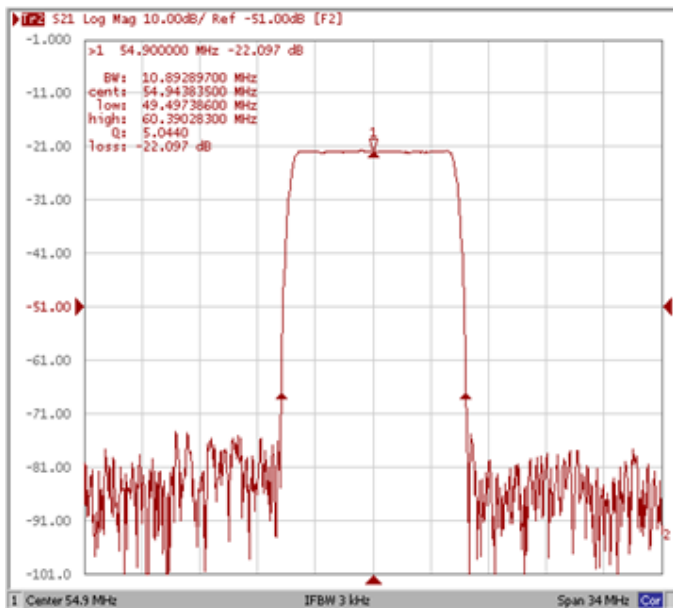
Bandwidth at -1.0 dB

Bandwidth at -3.0 dB



Bandwidth at -45.0 dB

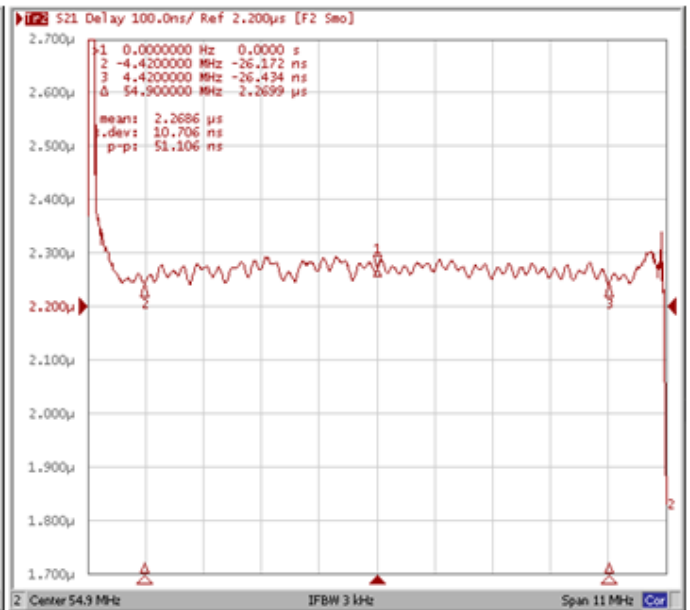
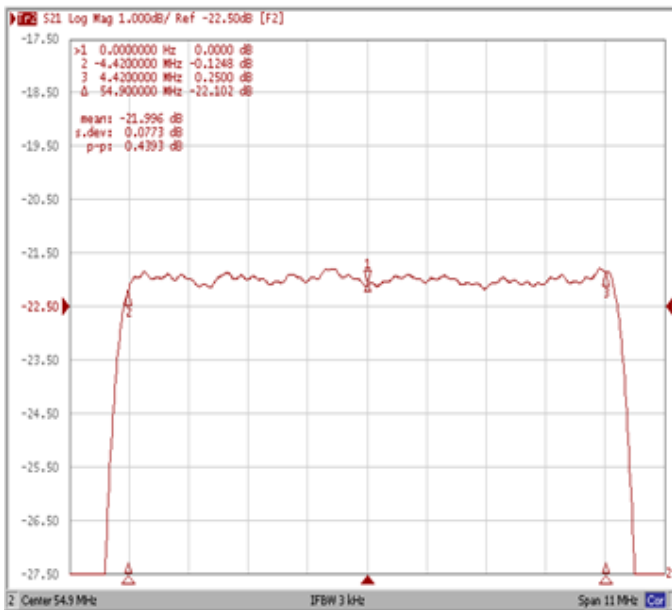
Wide-Band



Frequency Response

Ripple Variation Fo±4.42MHz

Group Delay Variation Fo±4.42MHz



Smith Chart

VSWR

