

- 260.0 MHz IF SAW Filter / 29.61 MHz Bandwidth
- Revision 0: 30. Oct. 2009

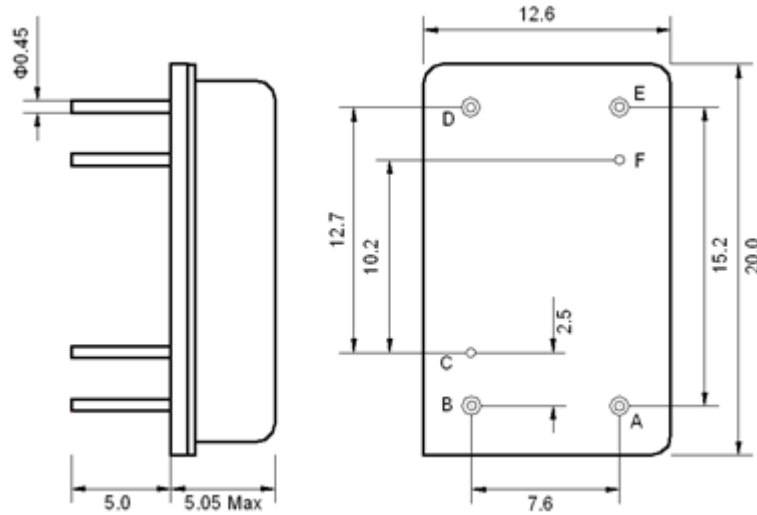
Electrical Characteristics

MAXIMUM RATING				
PARAMETERS DESCRIPTION	UNIT	MINIMUM	TYPICAL	MAXIMUM
Operation Temperature Range	°C	-30	-	80
Storage Temperature Range	°C	-40	-	85
Maximum DC Voltage	V	-	-	10
Maximum Input Power	dBm	-	-	10
Source Impedance (single ended) ⁽¹⁾	Ω	-	50	-
Load Impedance (single ended) ⁽¹⁾	Ω	-	50	-
Package type & size	D			
Length x Width	mm ²	-	20.0 x 12.6	-
Height	mm	-	-	5.05

ELECTRICAL SPECIFICATION				
PARAMETERS DESCRIPTION	UNIT	MINIMUM	TYPICAL	MAXIMUM
Center Frequency (Fo)	MHz	-	260.0	-
Insertion Loss at Fo	dB	-	31.7	-
Group Delay Variation at Fo ± 14.32 MHz	nsec	-	43	80
Absolute Delay at Fo	usec	-	2.83	-
Passband Ripple Variation at Fo ± 14.32 MHz	dB	-	0.7	1.0
Bandwidth at -1dB	MHz	29.40	29.61	-
Bandwidth at -3dB	MHz	-	29.92	-
Bandwidth at -40dB	MHz	-	31.23	31.40
Ultimate Rejection	dB	50	53	-
Temperature Coefficient	ppm/°C	-	-18	-

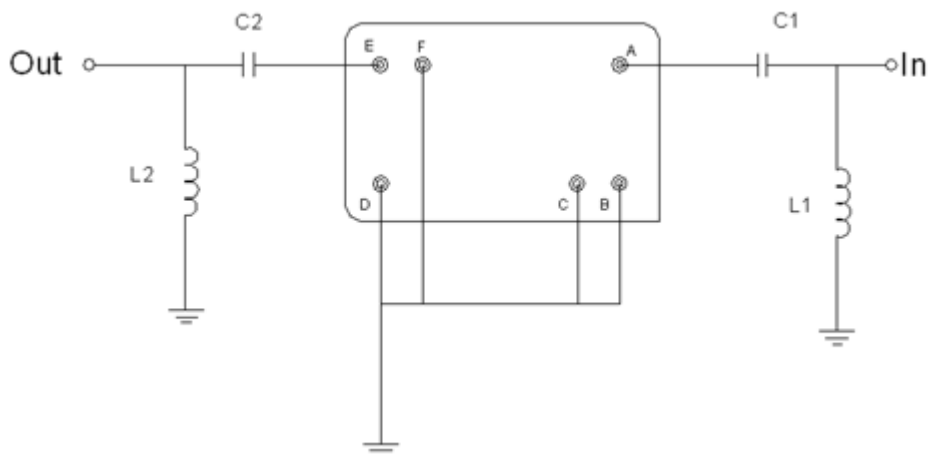
Notes : (1) With Matching Network (Ref. Testing Environment Circuit as shown below).
Those impedances could be modified with different impedance values and/or structures, if necessary.

Package Dimensions



Pin Description	
B, C, D, F	Ground
A	Input
E	Output

Testing Environment

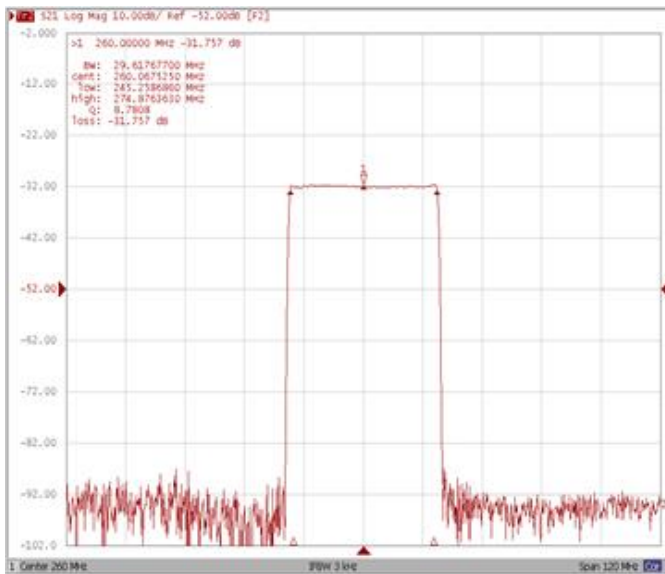


Test Fixture & Values	
Input	L1 = 8.2 nH, C1 = 220 pF
Output	L2 = 10 nH, C2 = 75 pF
Source/Load Impedance	50 Ω

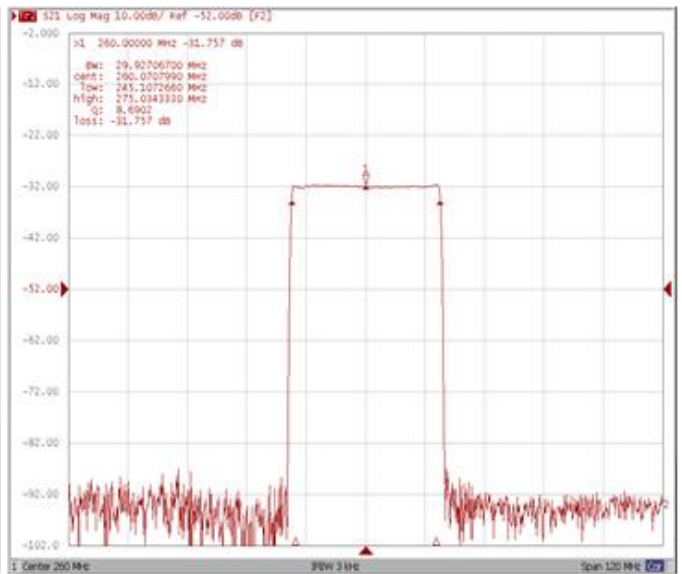
Frequency Characteristics

Frequency Response

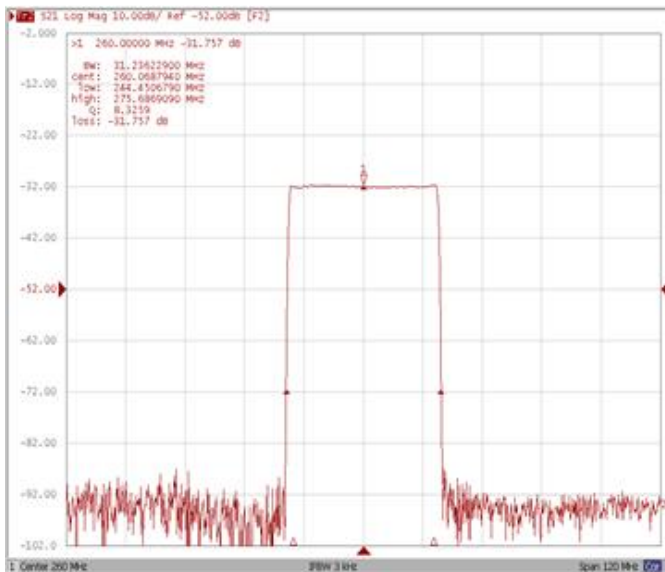
Bandwidth at -1.0 dB



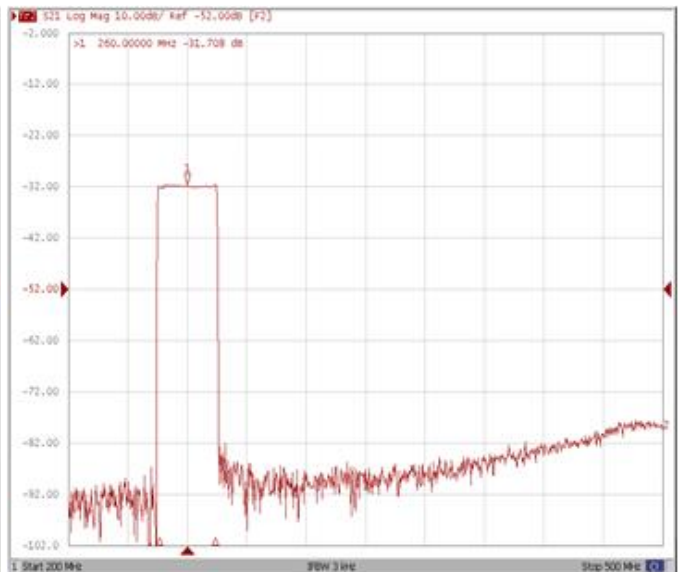
Bandwidth at -3.0 dB



Bandwidth at -40.0 dB

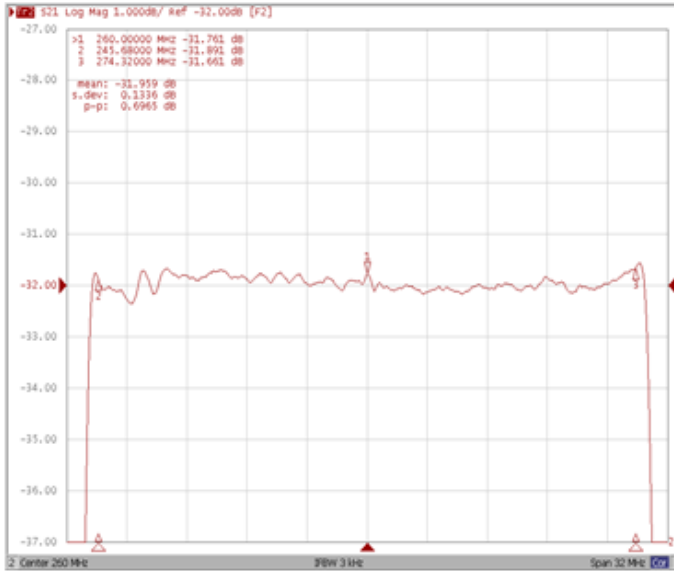


Wide-Band

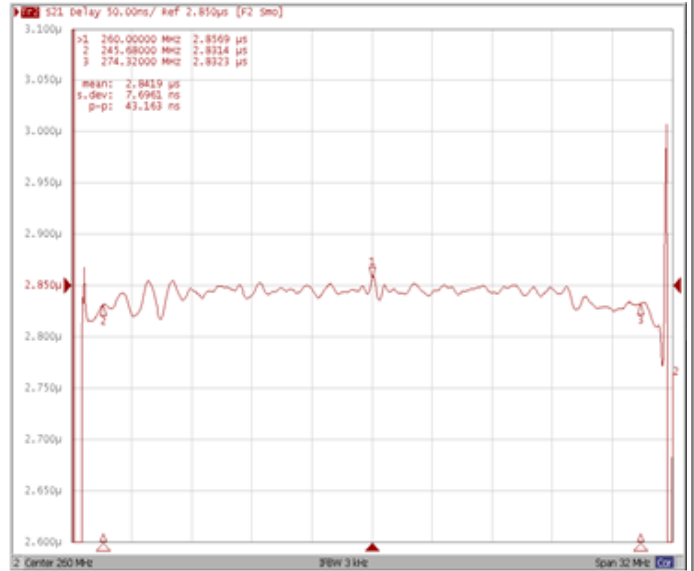


Frequency Response

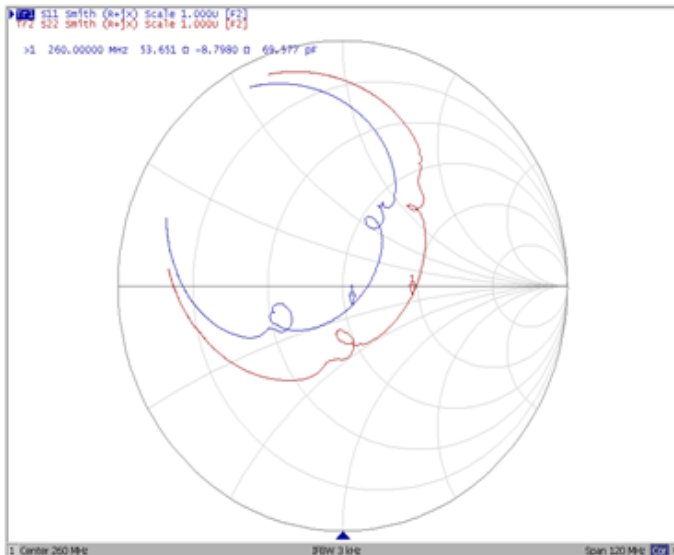
Ripple Variation $F_0 \pm 14.32\text{MHz}$



Group Delay Variation $F_0 \pm 14.32\text{MHz}$



Smith Chart



VSWR

