

- 247.5 MHz IF SAW Filter / 29.70 MHz Bandwidth
- Revision 0: 24. Nov. 2009

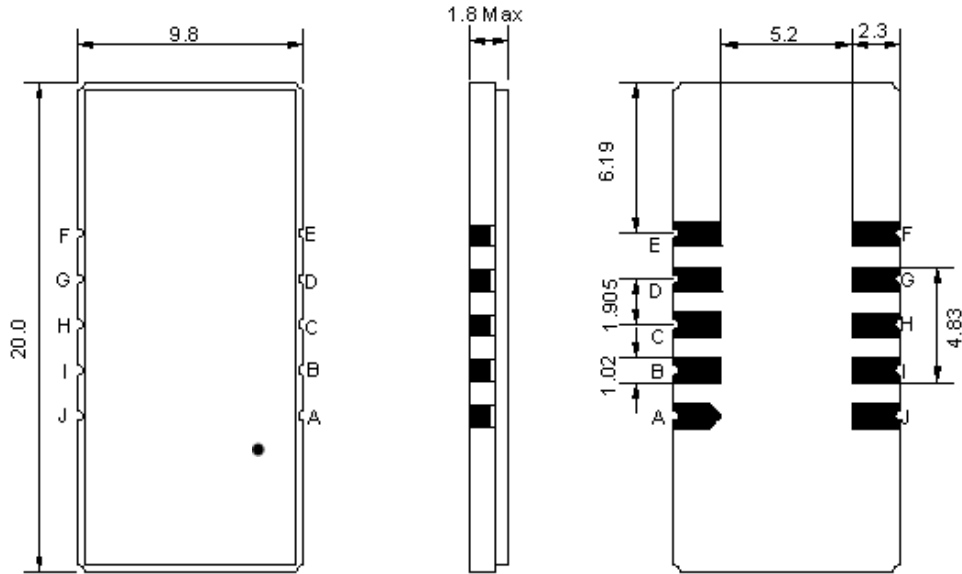
Electrical Characteristics

MAXIMUM RATING				
PARAMETERS DESCRIPTION	UNIT	MINIMUM	TYPICAL	MAXIMUM
Operation Temperature Range	°C	-	25	-
Storage Temperature Range	°C	-40	-	85
Maximum DC Voltage	V	-	-	10
Maximum Input Power	dBm	-	-	10
Source Impedance (single ended) ⁽¹⁾	Ω	-	50	-
Load Impedance (single ended) ⁽¹⁾	Ω	-	50	-
Package type & size	D1			
Length x Width	mm ²	-	20.0 x 9.8	-
Height	mm	-	-	1.8

ELECTRICAL SPECIFICATION				
PARAMETERS DESCRIPTION	UNIT	MINIMUM	TYPICAL	MAXIMUM
Center Frequency (Fo)	MHz	-	247.5	-
Insertion Loss at Fo	dB	-	31.6	-
Group Delay Variation at Fo ± 14.32 MHz	nsec	-	50	80
Absolute Delay at Fo	usec	-	2.93	-
Passband Ripple Variation at Fo ± 14.32 MHz	dB	-	0.59	1.10
Bandwidth at -1dB	MHz	29.40	29.70	-
Bandwidth at -3dB	MHz	-	29.98	-
Bandwidth at -40dB	MHz	-	31.25	31.45
Ultimate Rejection	dB	47	52	-
Temperature Coefficient	ppm/°C	-	-18	-

Notes : (1) With Matching Network (Ref. Testing Environment Circuit as shown below).
Those impedances could be modified with different impedance values and/or structures, if necessary.

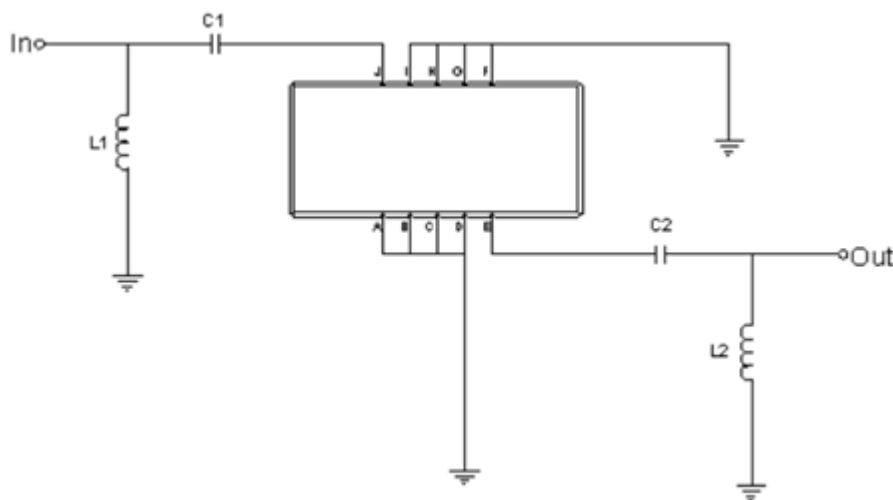
Package Dimensions



- ① **TRANSKO:** Brand
- ② **TA24729A:** Model Name
- ③ **X :** Date Code (Year)
- ④ **Y :** Date Code (Month)
- ⑤ **Z :** Date Code (Date)
- : Index Dot

Pin Description	
A, B, C, D, F, G, H, I	Ground
J	Input
E	Output

Testing Environment



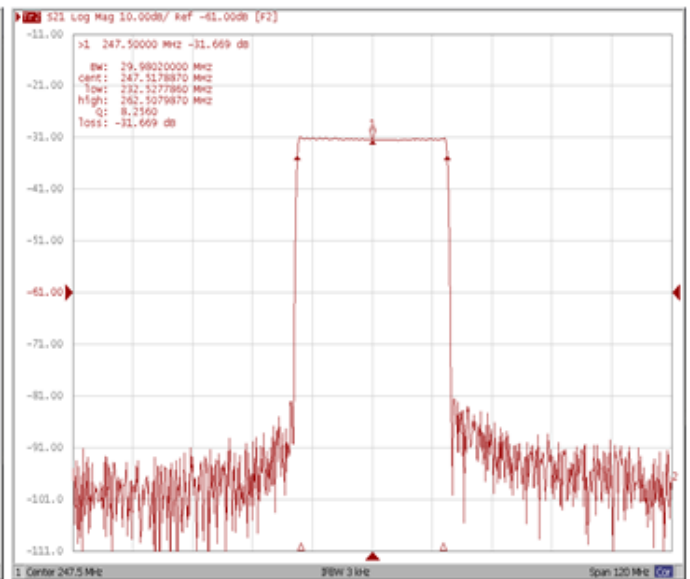
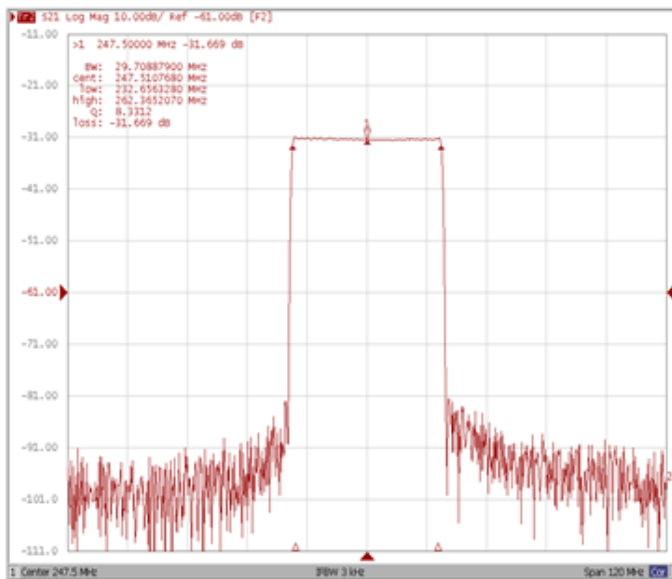
Test Fixture & Values	
Input	L1 = 8.2 nH, C1 = 680 pF
Output	L2 = 8.2 nH, C2 = 560 pF
Source/Load Impedance	50 Ω

Frequency Characteristics

Frequency Response

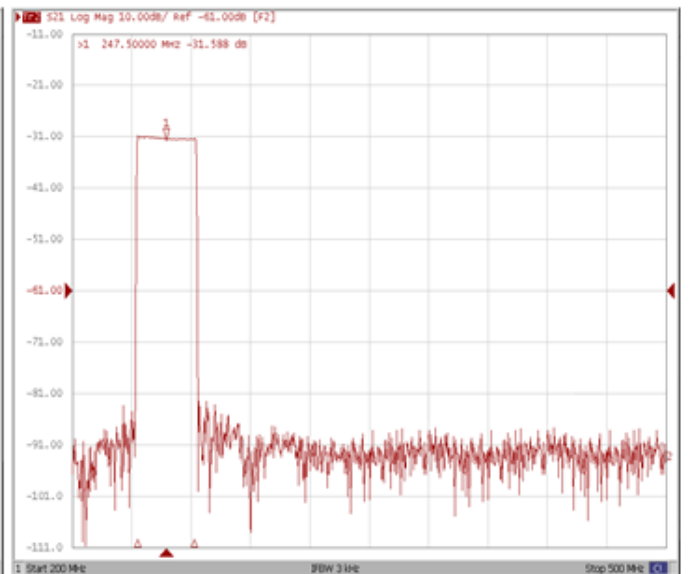
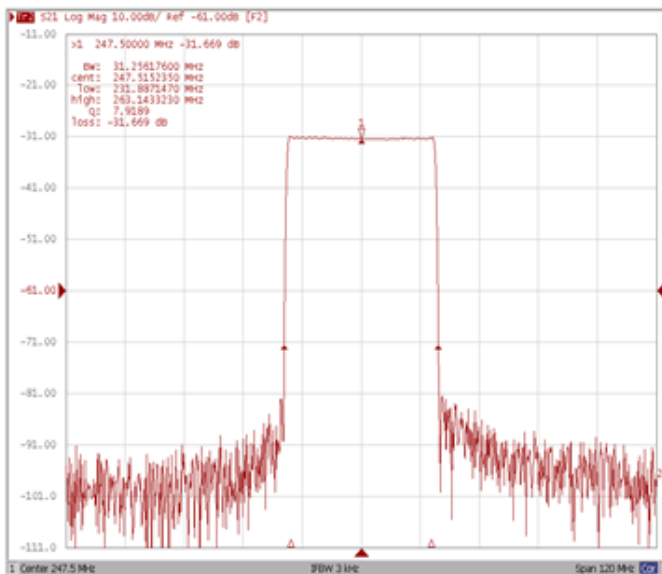
Bandwidth at -1.0 dB

Bandwidth at -3.0 dB



Bandwidth at -40.0 dB

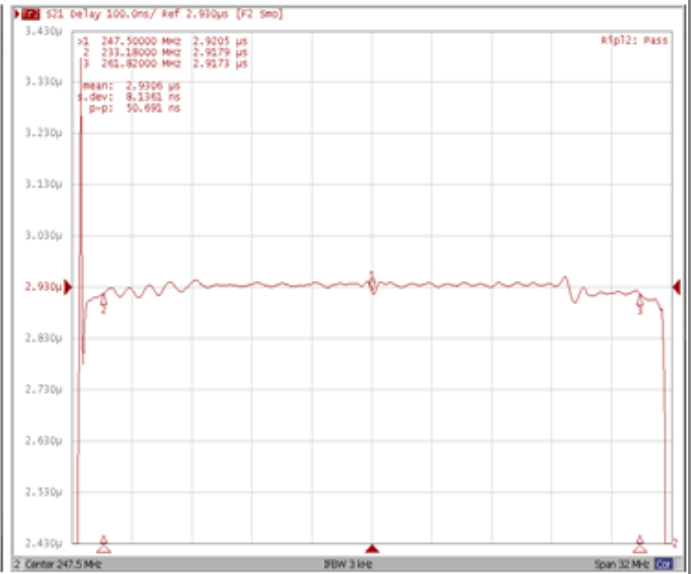
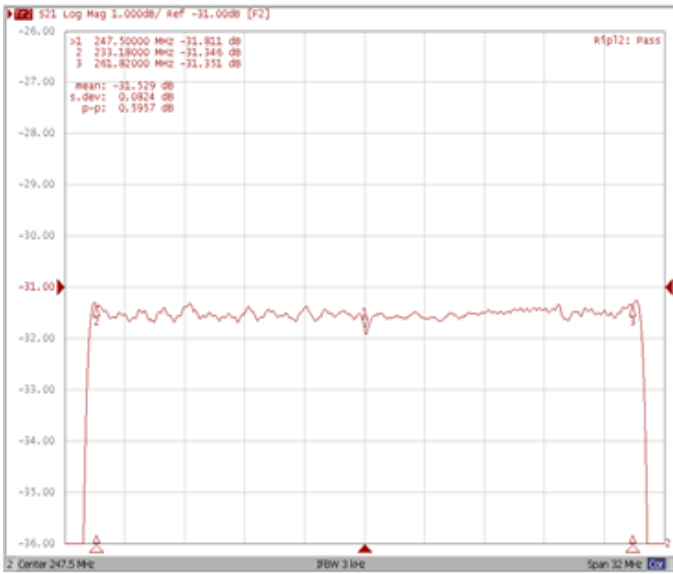
Wide-Band



Frequency Response

Ripple Variation Fo±14.32 MHz

Group Delay Variation Fo±14.32 MHz



Smith Chart

VSWR

