

- 184.00 MHz IF SAW Filter / 25.90 MHz Bandwidth
- Revision 0: 11 May. 2010

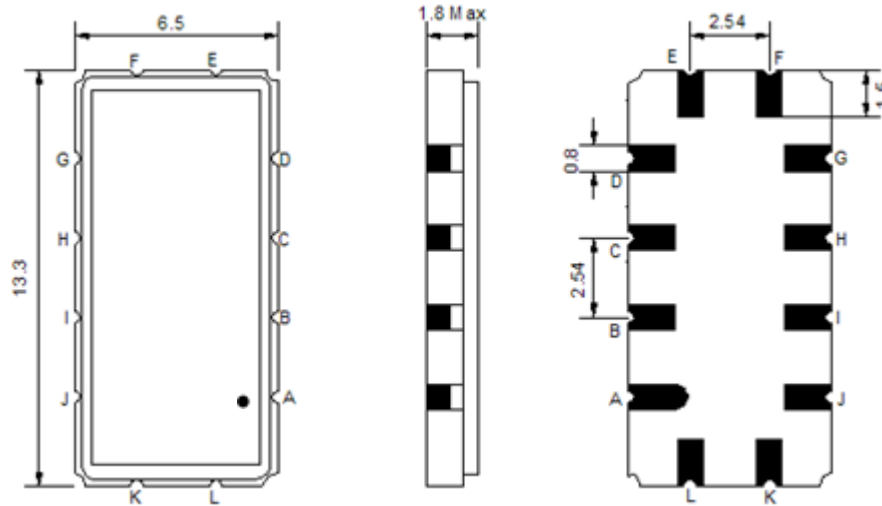
Electrical Characteristics

MAXIMUM RATING				
PARAMETERS DESCRIPTION	UNIT	MINIMUM	TYPICAL	MAXIMUM
Operation Temperature Range	°C	-5	-	60
Storage Temperature Range	°C	-40	-	85
Maximum DC Voltage	V	-	-	10
Maximum Input Power	dBm	-	-	10
Source Impedance (single ended) ⁽¹⁾	Ω	-	50	-
Load Impedance (single ended) ⁽¹⁾	Ω	-	50	-
Package type & size	V			
Length x Width	mm ²	-	13.3 x 6.5	-
Height	mm	-	-	1.8

ELECTRICAL SPECIFICATION				
PARAMETERS DESCRIPTION	UNIT	MINIMUM	TYPICAL	MAXIMUM
Center Frequency (Fo)	MHz	-	184.00	-
Insertion Loss at Fo	dB	-	29.50	31.50
Group Delay Variation at Fo ± 12.50 MHz	nsec	-	18	50
Absolute Delay at Fo	usec	-	2.14	-
Passband Ripple Variation at Fo ± 12.50 MHz	dB	-	0.60	1.00
Bandwidth at -1dB	MHz	25.60	25.90	-
Bandwidth at -3dB	MHz	-	26.33	-
Bandwidth at -40dB	MHz	-	28.25	28.50
Ultimate Rejection	dB	48	53	-
Temperature Coefficient	ppm/°C	-	-20	-

Notes : (1) With Matching Network (Ref. Testing Environment Circuit as shown below).
Those impedances could be modified with different impedance values and/or structures, if necessary.

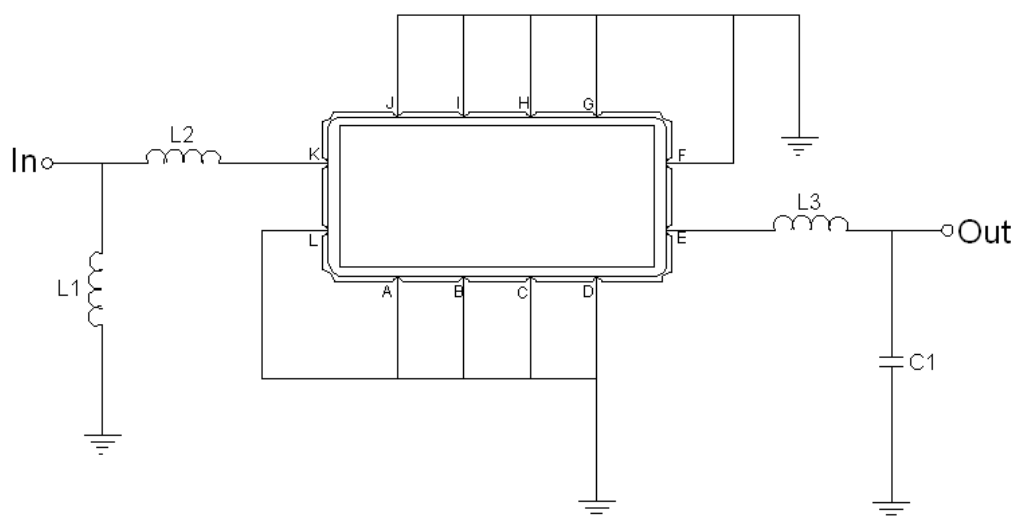
Package Dimensions



- ① **TRANSKO:** Brand
- ② **TA18425A:** Model Name
- ③ **X :** Date Code (Year)
- ④ **Y :** Date Code (Month)
- ⑤ **Z :** Date Code (Date)
- : Index Dot

Pin Description	
A, B, C, D, F, G, H, I, J, L	Ground
K	Input
E	Output

Testing Environment



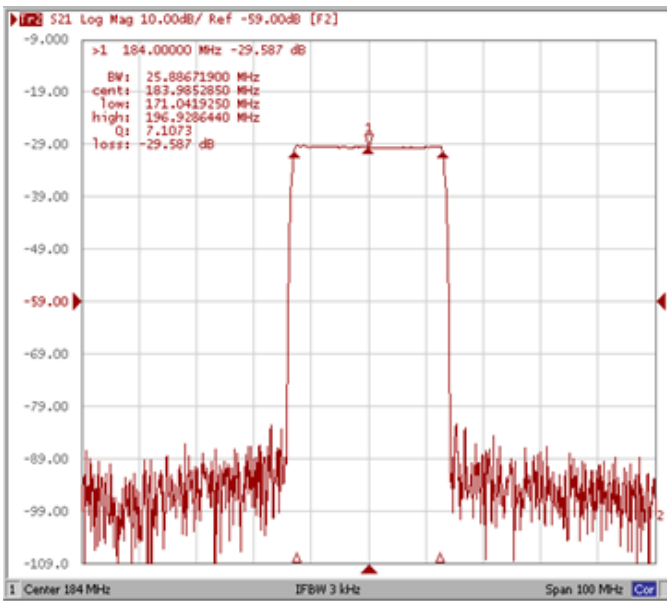
Test Fixture & Values	
Input	L1 = 18 nH, L2 = 12 nH
Output	L3 = 47 nH, C1 = 33 pF
Source/Load Impedance	50 Ω

Frequency Characteristics

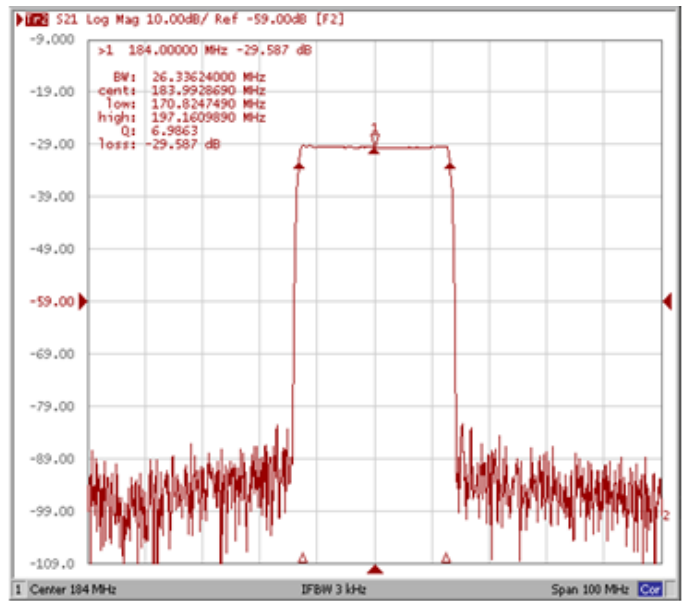
Frequency Response

*Room Temp. 25°C

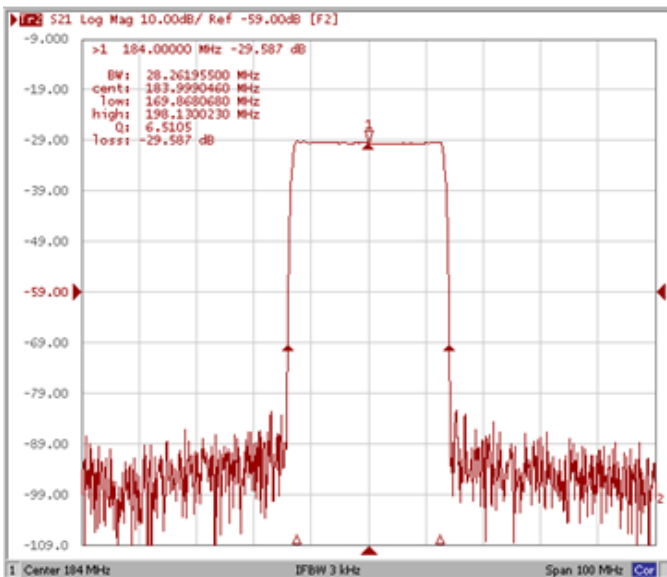
Bandwidth at -1.0 dB



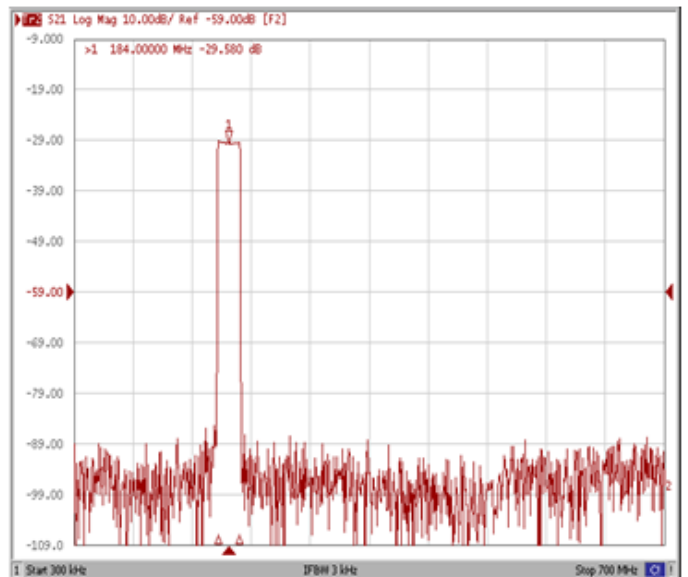
Bandwidth at -3.0 dB



Bandwidth at -40.0 dB



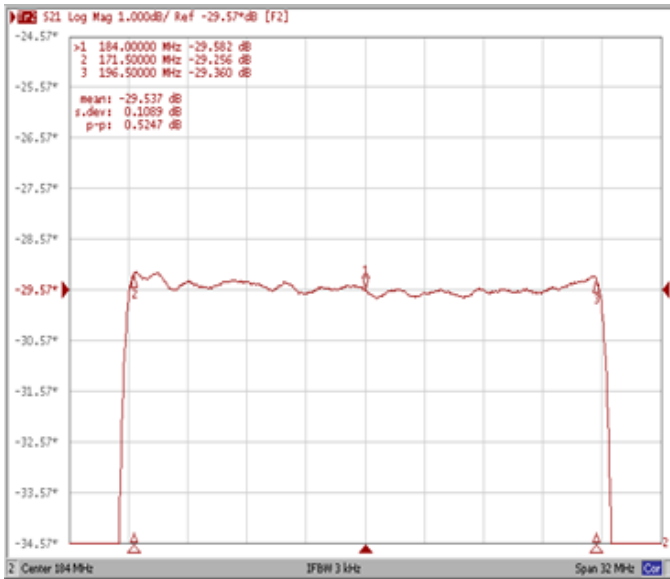
Wide-Band



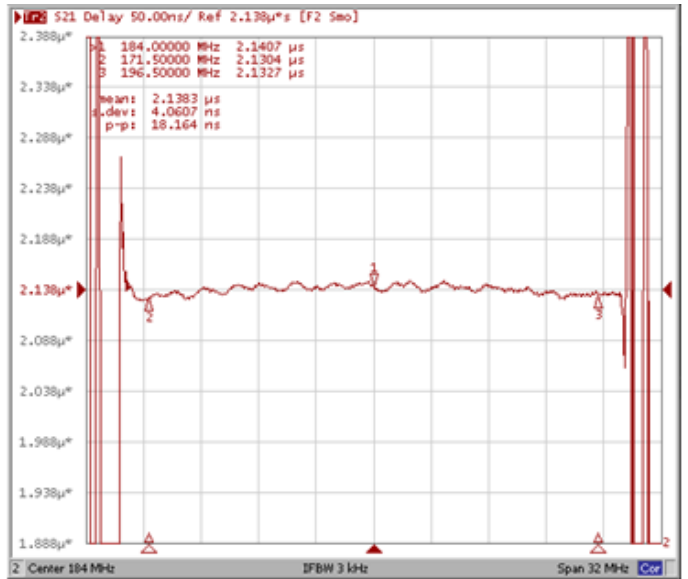
Frequency Response

*Room Temp. 25°C

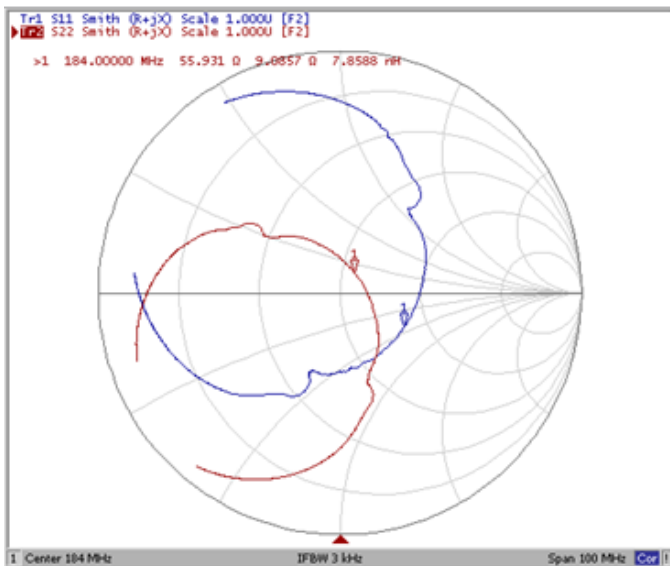
Ripple Variation Fo±12.50 MHz



Group Delay Variation Fo±12.50 MHz



Smith Chart



VSWR

