

- 153.50 MHz IF SAW Filter / 10.95 MHz Bandwidth
- Revision 0: 22. Apr. 2011

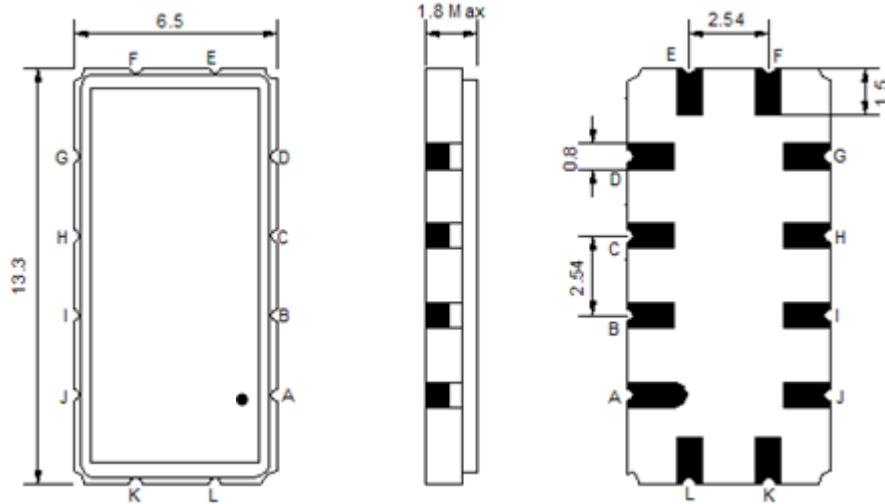
Electrical Characteristics

| MAXIMUM RATING | | | | |
|--|-----------------|---------|------------|---------|
| PARAMETERS DESCRIPTION | UNIT | MINIMUM | TYPICAL | MAXIMUM |
| Operation Temperature Range | °C | -20 | - | 70 |
| Storage Temperature Range | °C | -40 | - | 85 |
| Maximum DC Voltage | V | - | - | 10 |
| Maximum Input Power | dBm | - | - | 10 |
| Source Impedance (single ended) ⁽¹⁾ | Ω | - | 50 | - |
| Load Impedance (single ended) ⁽¹⁾ | Ω | - | 50 | - |
| Package type & size | V | | | |
| Length x Width | mm ² | - | 13.3 x 6.5 | - |
| Height | mm | - | - | 1.8 |

| ELECTRICAL SPECIFICATION | | | | |
|--|--------|---------|---------|---------|
| PARAMETERS DESCRIPTION | UNIT | MINIMUM | TYPICAL | MAXIMUM |
| Center Frequency (Fo) | MHz | - | 153.50 | - |
| Insertion Loss at Fo | dB | - | 26.00 | 28.00 |
| Group Delay Variation at Fo ± 5.00 MHz | nsec | - | 18 | 50 |
| Absolute Delay at Fo | usec | - | 1.72 | - |
| Passband Ripple Variation at Fo ± 5.00 MHz | dB | - | 0.35 | 0.90 |
| Bandwidth at -1dB | MHz | 10.75 | 10.95 | - |
| Bandwidth at -3dB | MHz | - | 11.60 | - |
| Bandwidth at -40dB | MHz | - | 14.00 | 14.20 |
| Ultimate Rejection | dB | 50 | 55 | - |
| Temperature Coefficient | ppm/°C | - | -20 | - |

Notes : (1) With Matching Network (Ref. Testing Environment Circuit as shown below).
Those impedances could be modified with different impedance values and/or structures, if necessary.

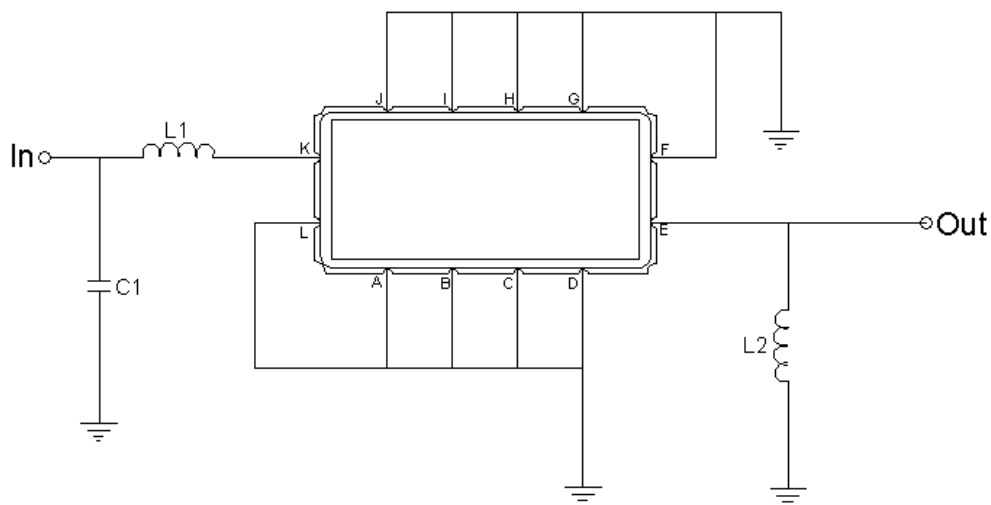
Package Dimensions



- ① **TRANSKO:** Brand
- ② **TA15310A:** Model Name
- ③ **X :** Date Code (Year)
- ④ **Y :** Date Code (Month)
- ⑤ **Z :** Date Code (Date)
- : Index Dot

| Pin Description | |
|------------------------------|--------|
| A, B, C, D, F, G, H, I, J, L | Ground |
| K | Input |
| E | Output |

Testing Environment



| Test Fixture & Values | |
|-----------------------|----------------------|
| Input | L1 = 68nH, C1 = 13pF |
| Output | L2 = 39nH |
| Source/Load Impedance | 50 Ω |

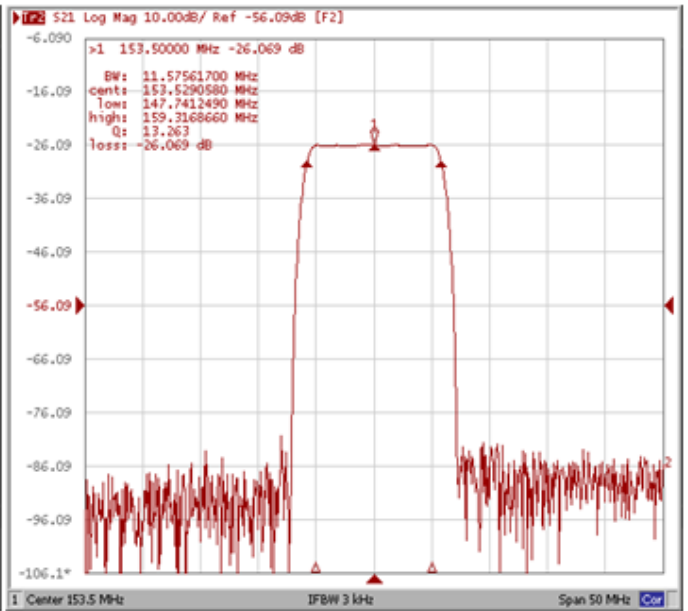
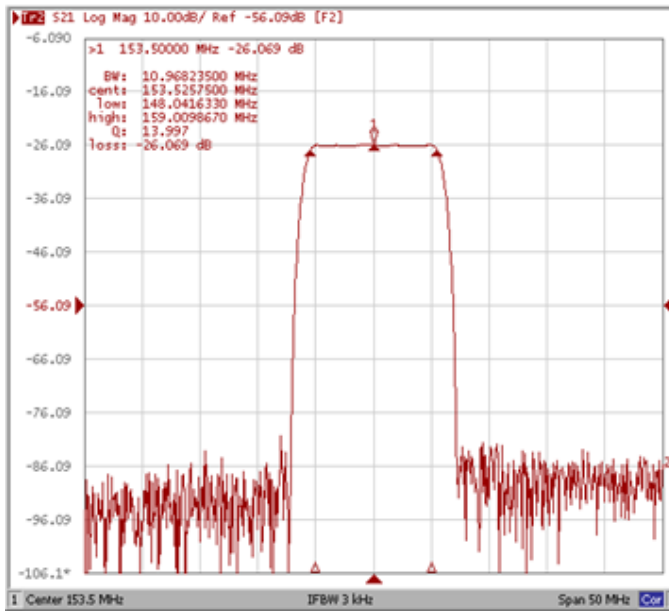
Frequency Characteristics

Frequency Response

Operating Temperature : +25°C

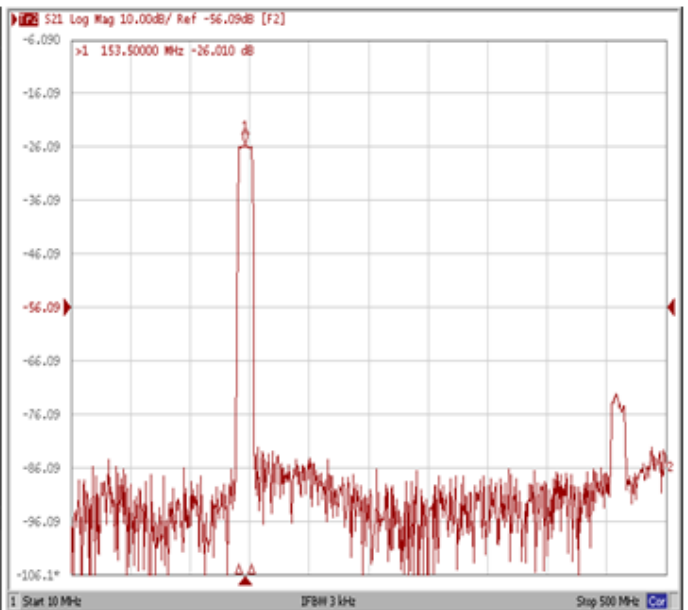
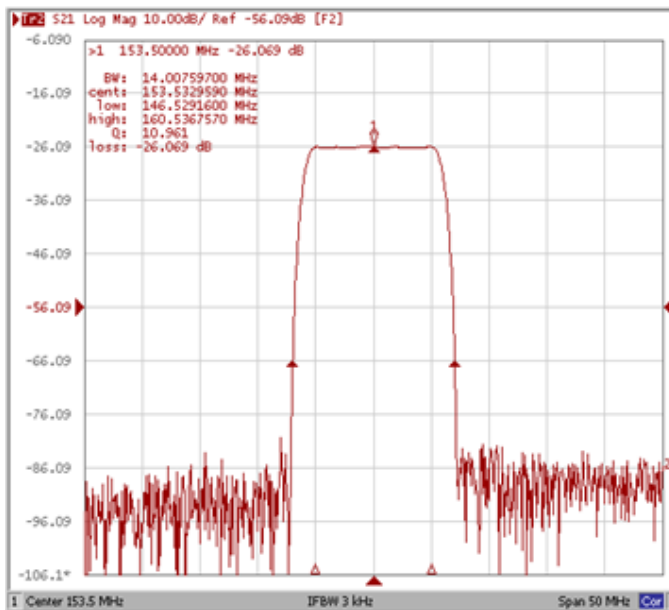
Bandwidth at -1.0 dB

Bandwidth at -3.0 dB



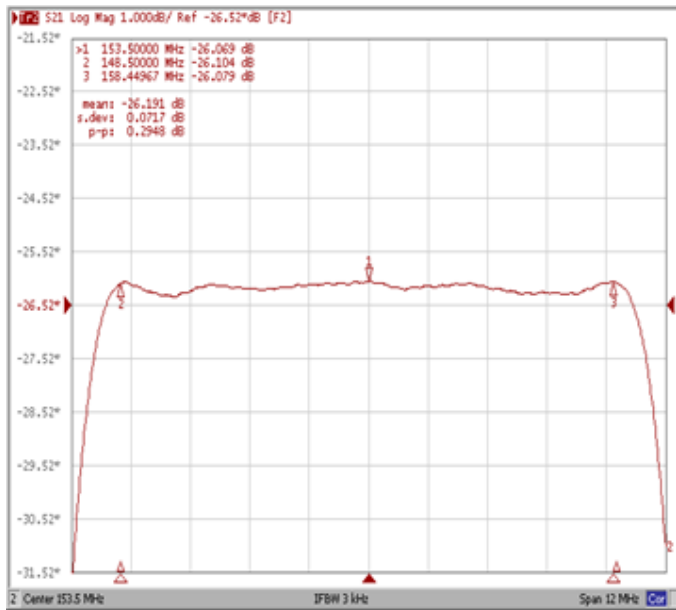
Bandwidth at -40.0 dB

Wide-Band

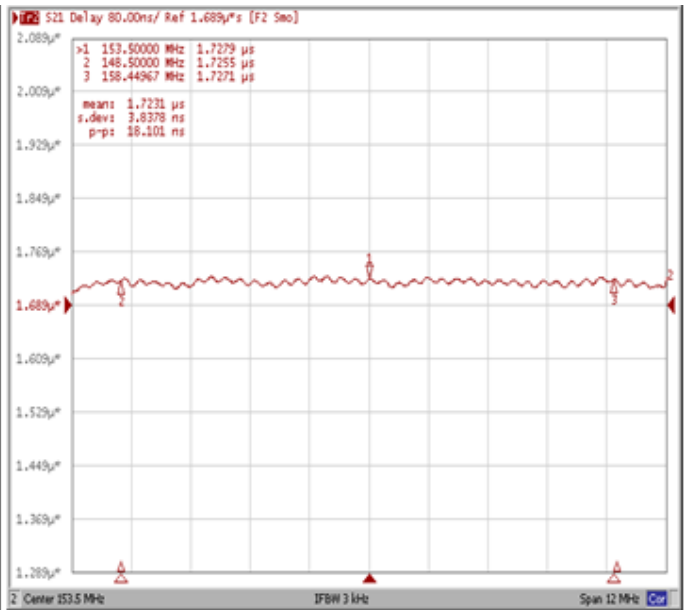


Frequency Response

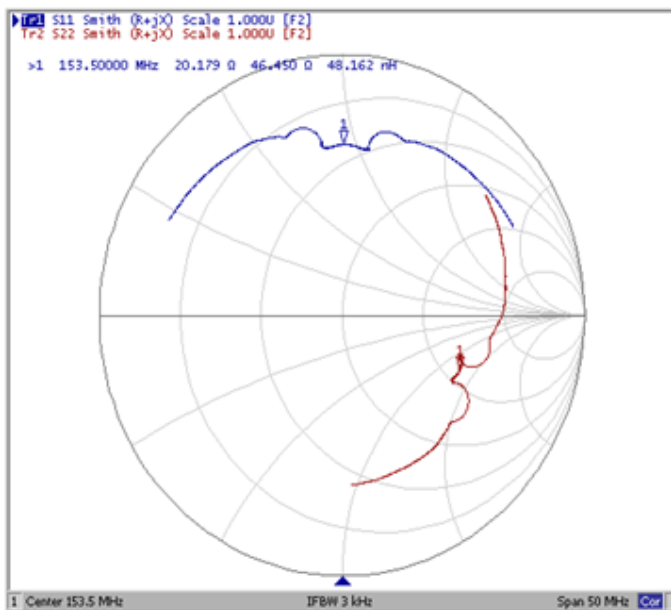
Ripple Variation Fo±5.00MHz



Group Delay Variation Fo±5.00MHz



Smith Chart



VSWR

