

- 145.0 MHz IF SAW Filter / 14.40 MHz Bandwidth
- Revision 0: 30. Jun. 2008

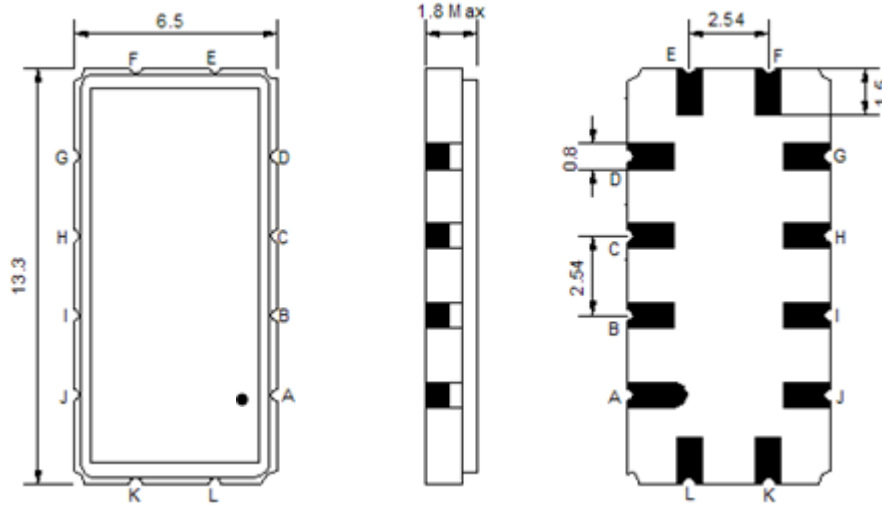
Electrical Characteristics

MAXIMUM RATING				
PARAMETERS DESCRIPTION	UNIT	MINIMUM	TYPICAL	MAXIMUM
Operation Temperature Range	°C	-	25	-
Storage Temperature Range	°C	-40	-	85
Maximum DC Voltage	V	-	-	10
Maximum Input Power	dBm	-	-	10
Source Impedance (single ended) ⁽¹⁾	Ω	-	50	-
Load Impedance (single ended) ⁽¹⁾	Ω	-	50	-
Package type & size	V			
Length x Width	mm ²	-	13.3 x 6.5	-
Height	mm	-	-	1.8

ELECTRICAL SPECIFICATION				
PARAMETERS DESCRIPTION	UNIT	MINIMUM	TYPICAL	MAXIMUM
Center Frequency (Fo)	MHz	144.85	145.00	145.15
Insertion Loss at Fo	dB	-	18.0	20.0
Group Delay Variation	nsec	-	70	150
Absolute Delay at Fo	usec	-	1.58	-
Passband Ripple Variation	dB	-	0.70	1.0
Bandwidth at -1dB	MHz	-	14.40	-
Bandwidth at -3dB	MHz	14.70	14.86	-
Bandwidth at -40dB	MHz	-	16.75	16.90
Ultimate Rejection	dB	50	55	-
Temperature Coefficient	ppm/°C	-	-72	-

Notes : (1) With Matching Network (Ref. Testing Environment Circuit as shown below).
Those impedances could be modified with different impedance values and/or structures, if necessary.

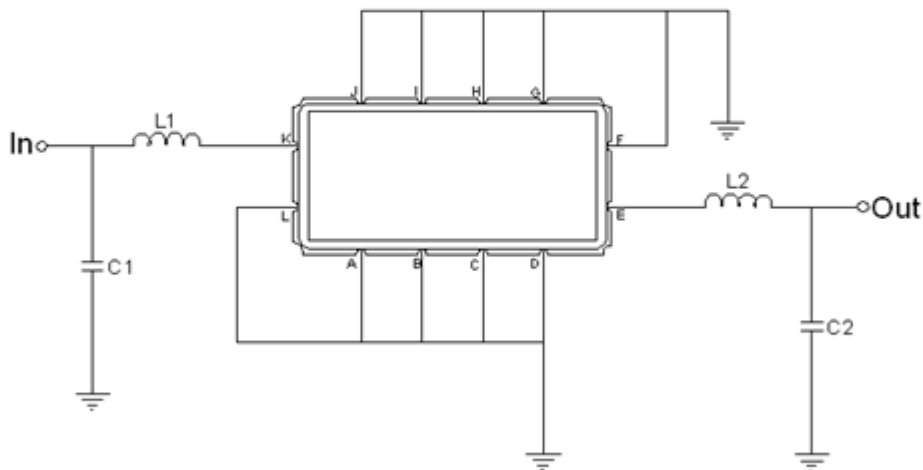
Package Dimensions



- ① **TRANSKO:** Brand
- ② **TA14514A:** Model Name
- ③ **X :** Date Code (Year)
- ④ **Y :** Date Code (Month)
- ⑤ **Z :** Date Code (Date)
- : Index Dot

Pin Description	
A, B, C, D, F, G, H, I, J, L	Ground
K	Input
E	Output

Testing Environment



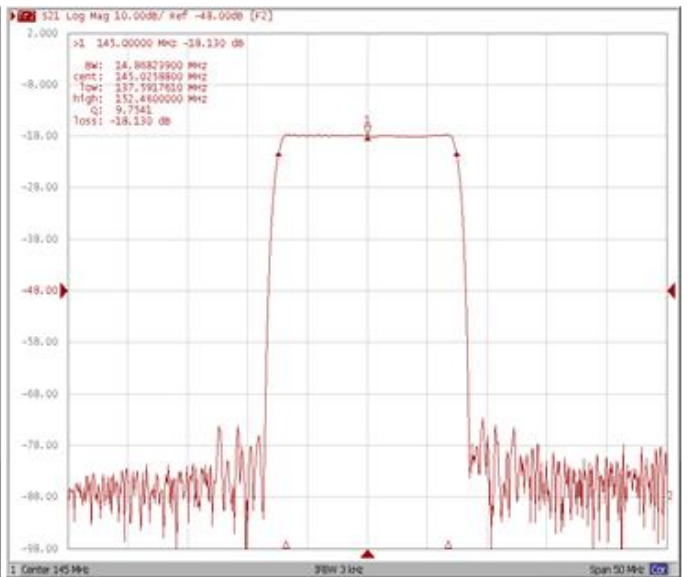
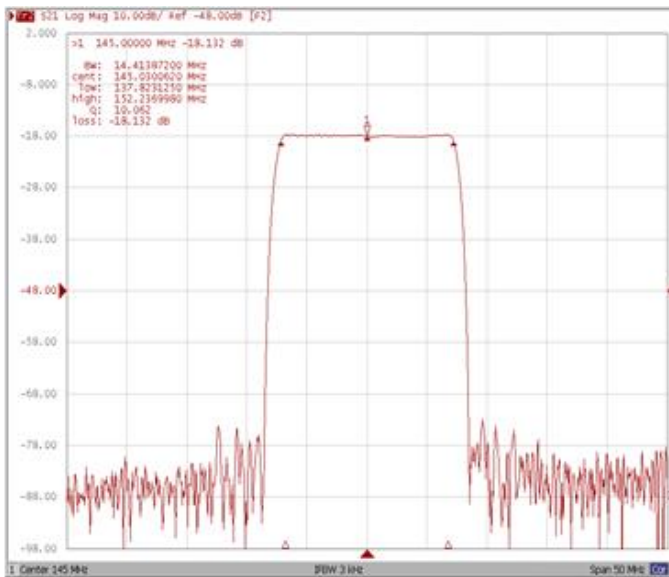
Test Fixture & Values	
Input	L1 = 33 nH , C1 = 8 pF
Output	L2 = 33 nH , C2 = 8 pF
Source/Load Impedance	50 Ω

Frequency Characteristics

Frequency Response

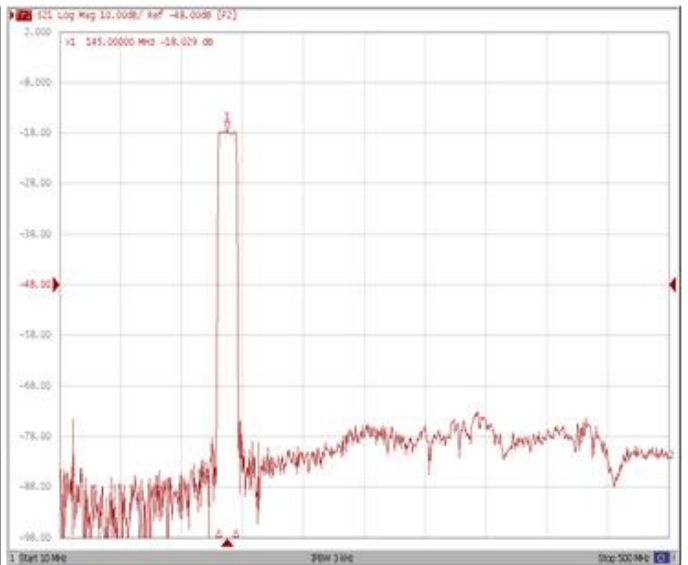
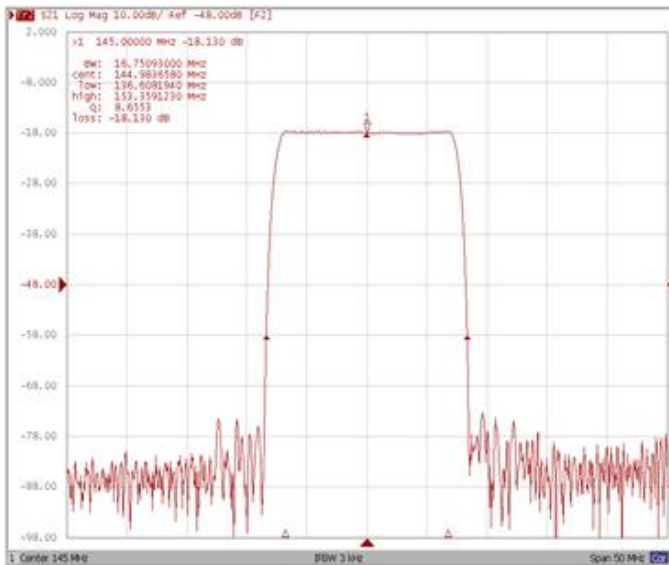
Bandwidth at -1.0 dB

Bandwidth at -3.0 dB



Bandwidth at -40.0 dB

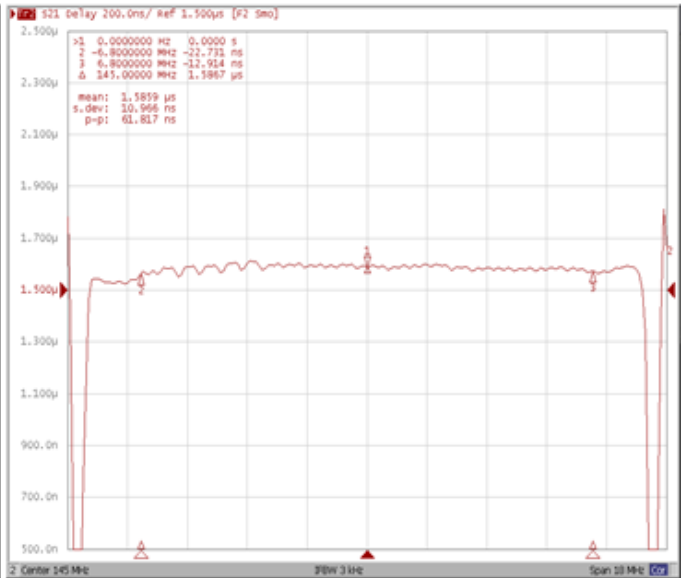
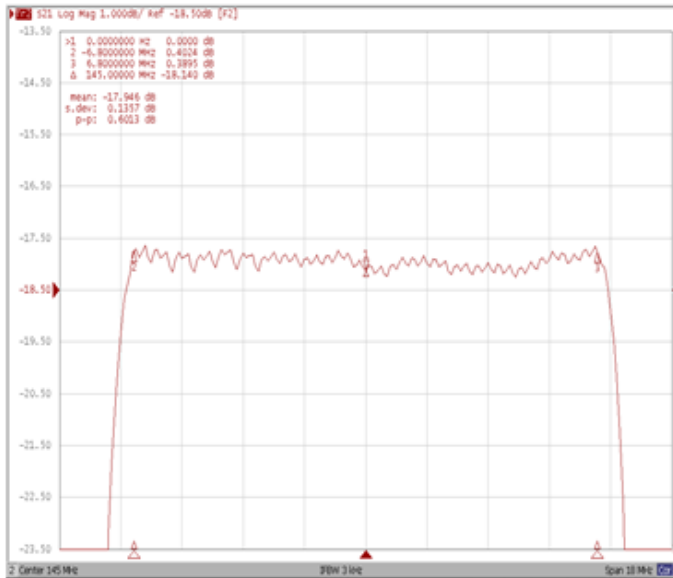
Wide-Band



Frequency Response

Ripple Variation

Group Delay Variation



Smith Chart

SWR

