

- 120.0 MHz IF SAW Filter / 19.9 MHz Bandwidth
- Revision 0: 21. Nov. 2007

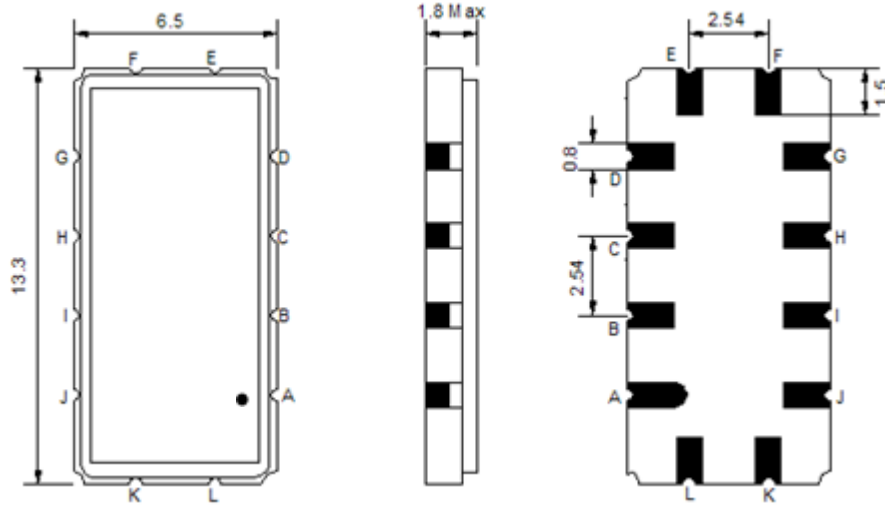
Electrical Characteristics

| MAXIMUM RATING | | | | |
|--|-----------------|---------|------------|---------|
| PARAMETERS DESCRIPTION | UNIT | MINIMUM | TYPICAL | MAXIMUM |
| Operation Temperature Range | °C | -40 | - | 85 |
| Storage Temperature Range | °C | -45 | - | 85 |
| Maximum DC Voltage | V | - | - | 10 |
| Maximum Input Power | dBm | - | - | 10 |
| Source Impedance (single ended) ⁽¹⁾ | Ω | - | 50 | - |
| Load Impedance (single ended) ⁽¹⁾ | Ω | - | 50 | - |
| Package type & size | V | | | |
| Length x Width | mm ² | - | 13.3 x 6.5 | - |
| Height | mm | - | - | 1.8 |

| ELECTRICAL SPECIFICATION | | | | |
|------------------------------------|--------|---------|---------|---------|
| PARAMETERS DESCRIPTION | UNIT | MINIMUM | TYPICAL | MAXIMUM |
| Center Frequency (Fo) | MHz | - | 120.00 | - |
| Insertion Loss at Fo | dB | - | 20.20 | 22.0 |
| Group Delay Variation (Fo±9.22MHz) | ns | - | 35 | 80 |
| Absolute Delay | us | - | 1.52 | - |
| Passband Ripple (Fo±9.22MHz) | dB | - | 0.62 | 1.00 |
| Bandwidth at -1dB | MHz | - | 19.44 | - |
| Bandwidth at -3dB | MHz | 19.60 | 19.90 | - |
| Bandwidth at -40dB | MHz | - | 21.70 | 22.00 |
| Ultimate Rejection | dB | 48 | 53 | - |
| Relative Attenuation Fo±10.8MHz | dB | 20 | 33 | - |
| Temperature Coefficient | ppm/°C | - | -72 | - |

Notes : (1) With Matching Network (Ref. Testing Environment Circuit as shown below).
Those impedances could be modified with different impedance values and/or structures, if necessary.

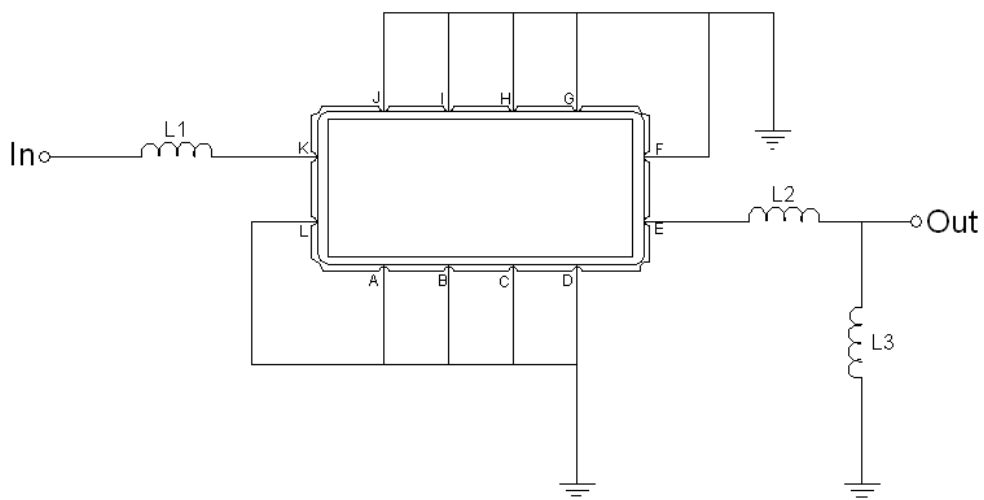
Package Dimensions



- ① **TRANSKO:** Brand
- ② **TA12019A:** Model Name
- ③ **X :** Date Code (Year)
- ④ **Y :** Date Code (Month)
- ⑤ **Z :** Date Code (Date)
- : Index Dot

| Pin Description | |
|------------------------------|--------|
| A, B, C, D, F, G, H, I, J, L | Ground |
| K | Input |
| E | Output |

Testing Environment

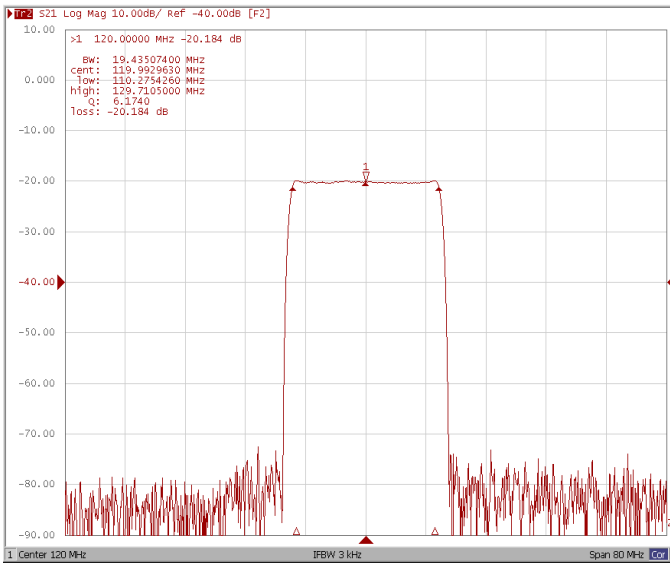


| Test Fixture & Values | |
|-----------------------|-------------------|
| Input | L1=68 nH |
| Output | L2=2.7nH, L3=68nH |
| Source/Load Impedance | 50 Ω |

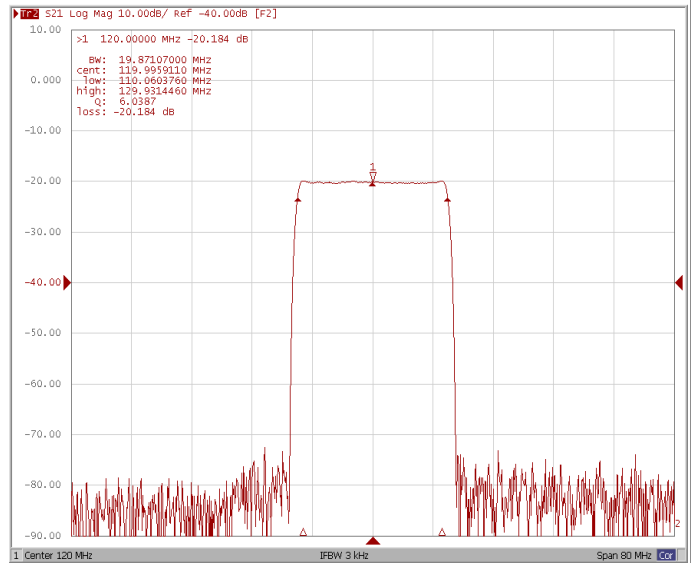
Frequency Characteristics

Frequency Response

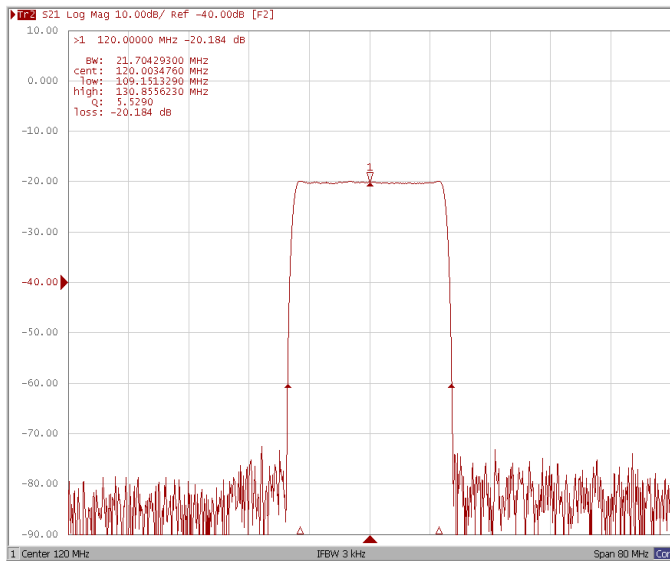
Bandwidth at -1.0 dB



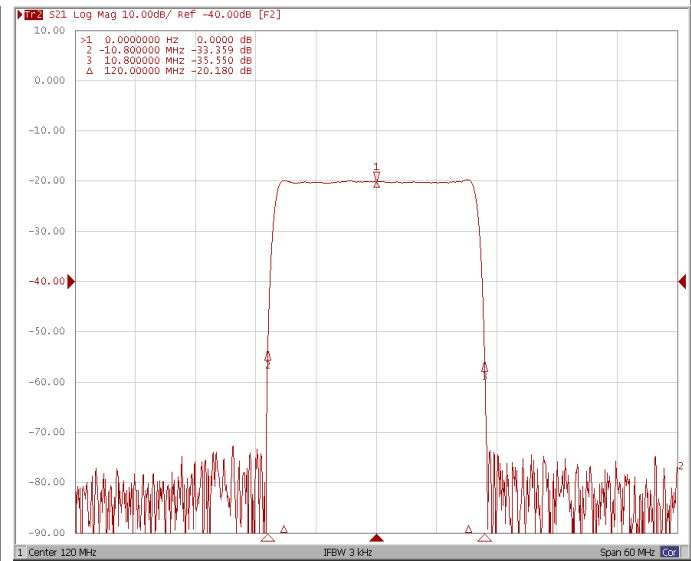
Bandwidth at -3.0 dB



Bandwidth at -40.0 dB



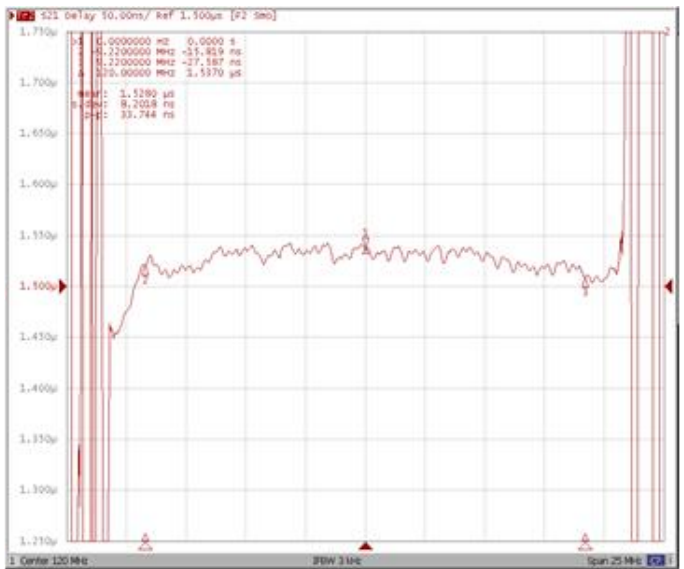
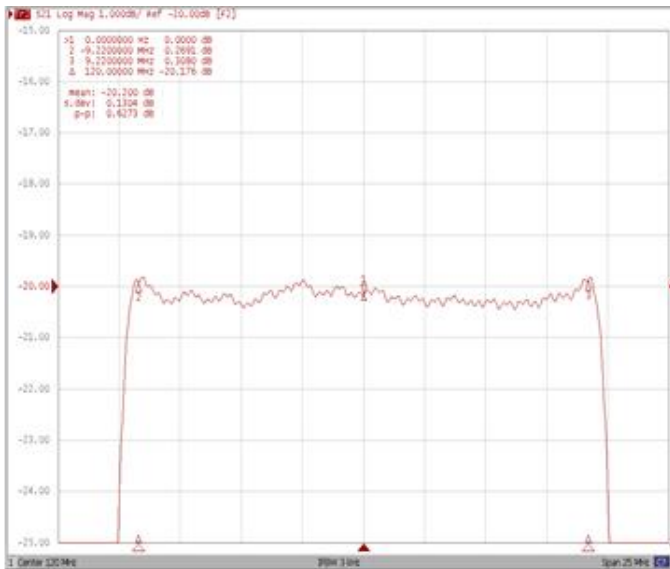
Relative Attenuation Fo±10.8MHz



Frequency Response

Ripple Variation Fo±9.22MHz

Group Delay Variation Fo±9.22MHz



Smith Chart

VSWR

