

- 115.0 MHz IF SAW Filter / 26.1 MHz Bandwidth
- Revision 1: 29. Oct. 2007

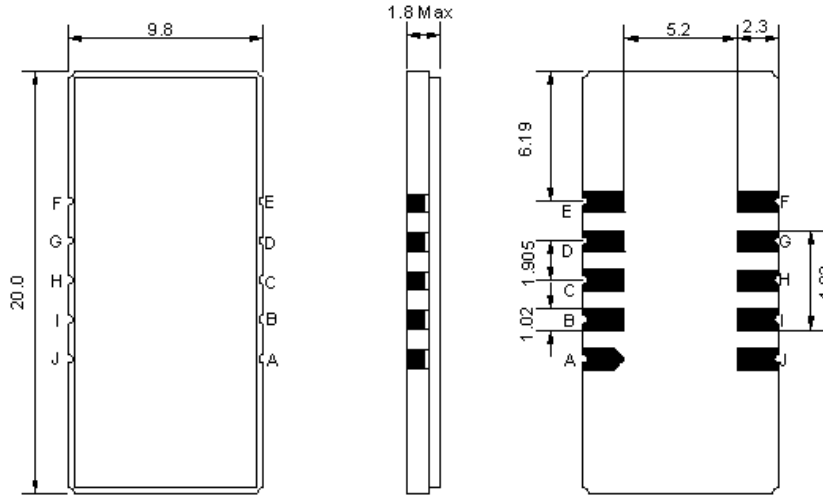
Electrical Characteristics

MAXIMUM RATING				
PARAMETERS DESCRIPTION	UNIT	MINIMUM	TYPICAL	MAXIMUM
Operation Temperature Range	°C	-30	-	80
Storage Temperature Range	°C	-40	-	85
Maximum DC Voltage	V	-	-	10
Maximum Input Power	dBm	-	-	10
Source Impedance (single ended) ⁽¹⁾	Ω	-	50	-
Load Impedance (single ended) ⁽¹⁾	Ω	-	50	-
Package type & size	D1			
Length x Width	mm ²	-	20.0 x 9.8	-
Height	mm	-	-	1.8

ELECTRICAL SPECIFICATION				
PARAMETERS DESCRIPTION	UNIT	MINIMUM	TYPICAL	MAXIMUM
Center Frequency (Fo)	MHz	114.9	115.0	115.1
Insertion Loss at Fo	dB	-	22.0	24.0
Amplitude Ripple within fo ±12.49 MHz	dB _{p-p}	-	0.65	1.0
Group Delay Variation within fo ±12.49 MHz	nsec	-	30	100
Absolute Delay at Fo	μsec	-	1.64	-
Temperature Coefficient	ppm/°C	-	-72	-
Bandwidth at -1.0 dB	MHz	-	26.0	-
Bandwidth at -3.0 dB	MHz	26.1	26.5	-
Bandwidth at -40.0 dB	MHz	-	28.6	29.0
Lower Sidelobe	dB	50	55	-
Upper Sidelobe	dB	50	55	-

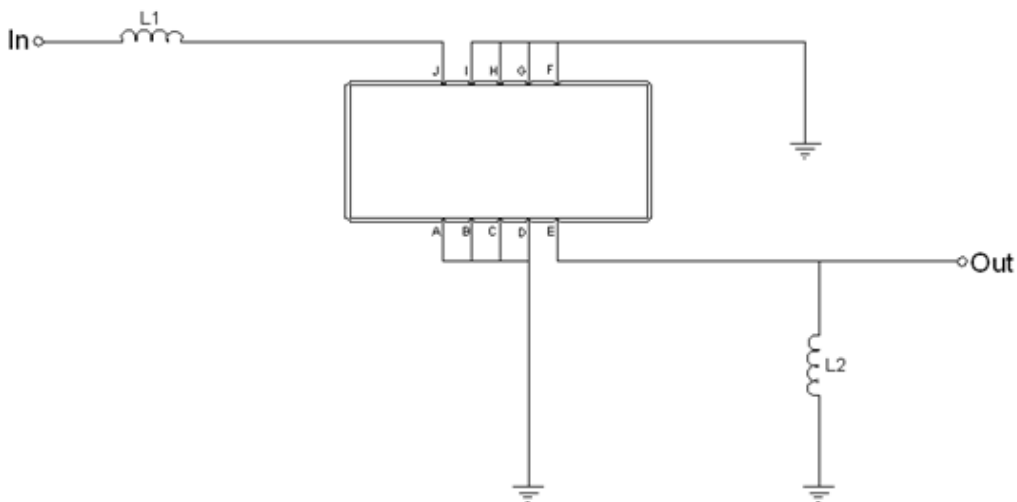
Notes : (1) With Matching Network (Ref. Testing Environment Circuit as shown below).
Those impedances could be modified with different impedance values and/or structures, if necessary.

Package Dimensions



Pin Description	
A, B, C, D, F, G, H, I	Ground
J	Input
E	Output

Testing Environment



Test Fixture & Values	
Input	L1= 82 nH
Output	L2= 56 nH
Source/Load Impedance	50 Ω

Frequency Characteristics

Frequency Response

