

- 115.00 MHz IF SAW Filter / 15.90 MHz Bandwidth
- Revision 0: 17. Dec. 2009

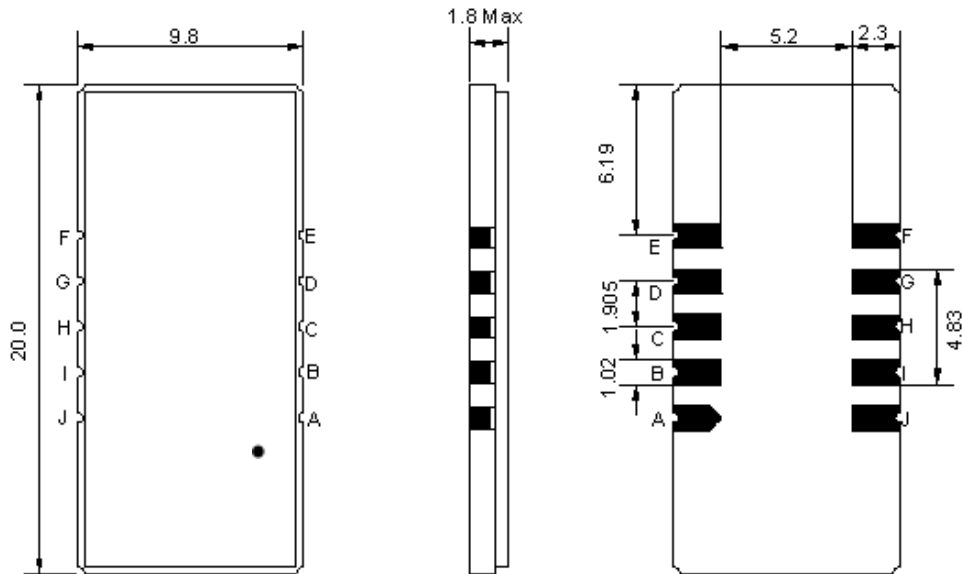
Electrical Characteristics

| MAXIMUM RATING | | | | |
|--|-----------------|---------|------------|---------|
| PARAMETERS DESCRIPTION | UNIT | MINIMUM | TYPICAL | MAXIMUM |
| Operation Temperature Range | °C | -5 | - | 70 |
| Storage Temperature Range | °C | -40 | - | 85 |
| Maximum DC Voltage | V | - | - | 10 |
| Maximum Input Power | dBm | - | - | 10 |
| Source Impedance (single ended) ⁽¹⁾ | Ω | - | 50 | - |
| Load Impedance (single ended) ⁽¹⁾ | Ω | - | 50 | - |
| Package type & size | D1 | | | |
| Length x Width | mm ² | - | 20.0 x 9.8 | - |
| Height | mm | - | - | 1.8 |

| ELECTRICAL SPECIFICATION | | | | |
|--|--------|---------|---------|---------|
| PARAMETERS DESCRIPTION | UNIT | MINIMUM | TYPICAL | MAXIMUM |
| Center Frequency (Fo) | MHz | - | 115.0 | - |
| Insertion Loss at Fo | dB | - | 22.2 | 24.0 |
| Group Delay Variation at Fo ± 7.47 MHz | nsec | - | 29 | 80 |
| Absolute Delay at Fo | usec | - | 2.31 | - |
| Passband Ripple Variation at Fo ± 7.47 MHz | dB | - | 0.56 | 1.00 |
| Bandwidth at -1dB | MHz | 15.75 | 15.90 | - |
| Bandwidth at -3dB | MHz | - | 16.18 | - |
| Bandwidth at -40dB | MHz | - | 17.50 | 17.65 |
| Ultimate Rejection | dB | - | 52 | - |
| Temperature Coefficient | ppm/°C | - | -72 | - |

Notes : (1) With Matching Network (Ref. Testing Environment Circuit as shown below).
Those impedances could be modified with different impedance values and/or structures, if necessary.

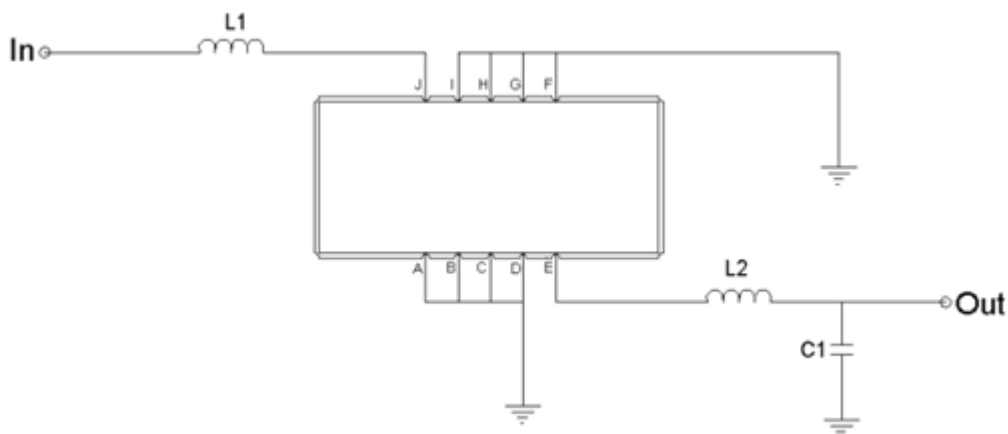
Package Dimensions



- ① TRANSKO: Brand
- ② TA11515C: Model Name
- ③ X : Date Code (Year)
- ④ Y : Date Code (Month)
- ⑤ Z : Date Code (Date)
- : Index Dot

| Pin Description | |
|------------------------|--------|
| A, B, C, D, F, G, H, I | Ground |
| J | Input |
| E | Output |

Testing Environment



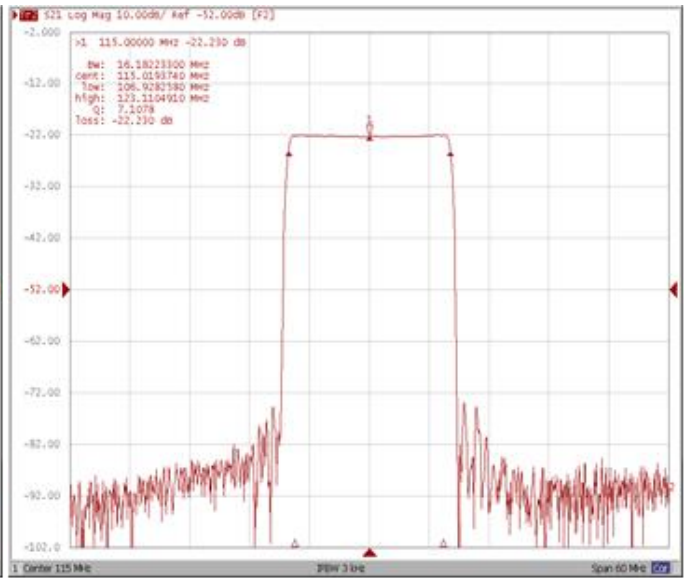
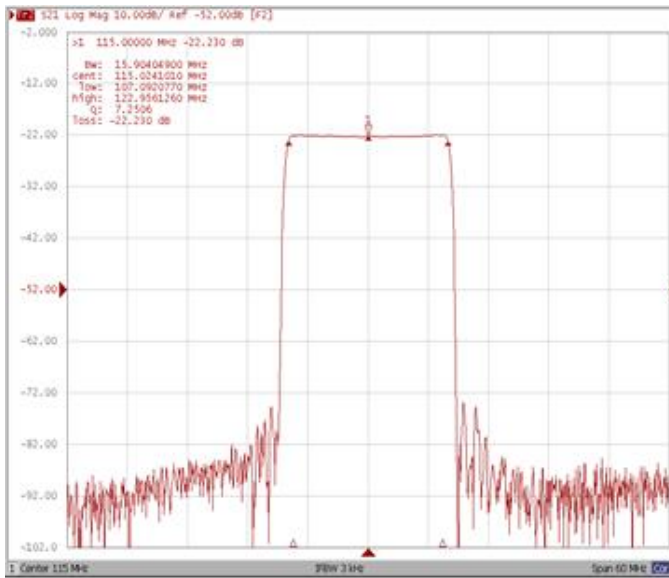
| Test Fixture & Values | |
|-----------------------|------------------------|
| Input | L1 = 33 nH |
| Output | L2 = 33 nH, C1 = 20 pF |
| Source/Load Impedance | 50 Ω |

Frequency Characteristics

Frequency Response

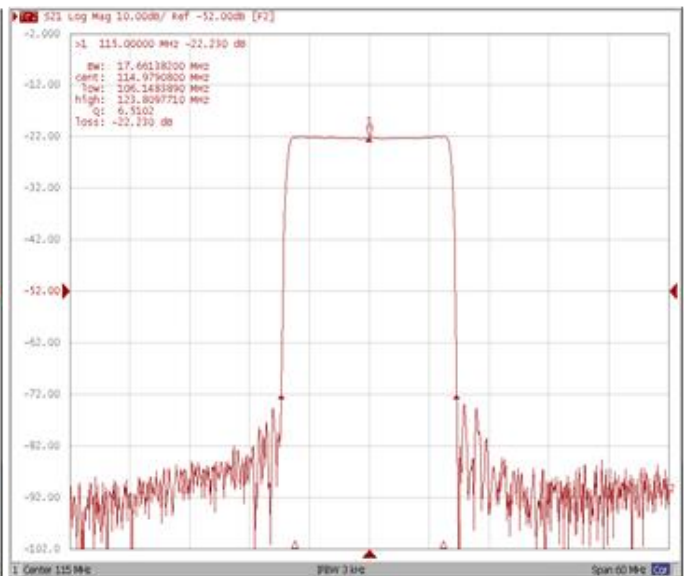
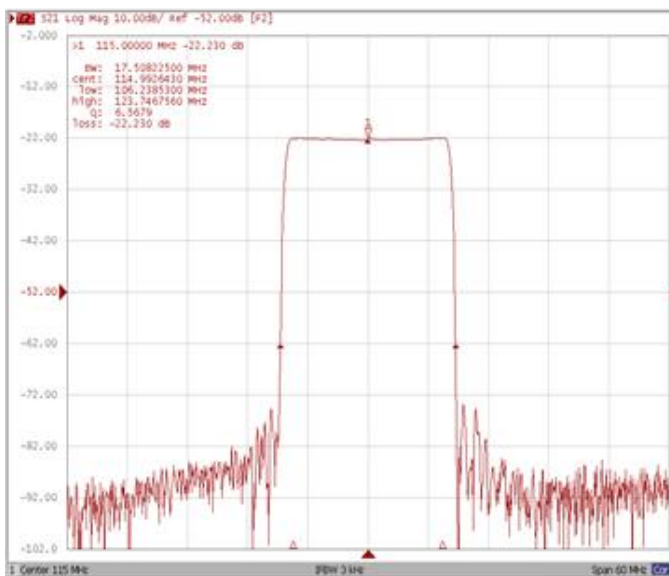
Bandwidth at -1.0 dB

Bandwidth at -3.0 dB



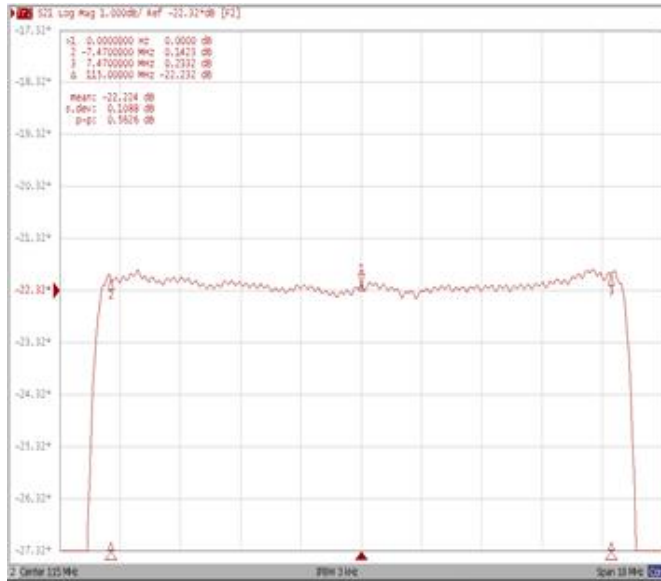
Bandwidth at -40.0 dB

Bandwidth at -50.0 dB

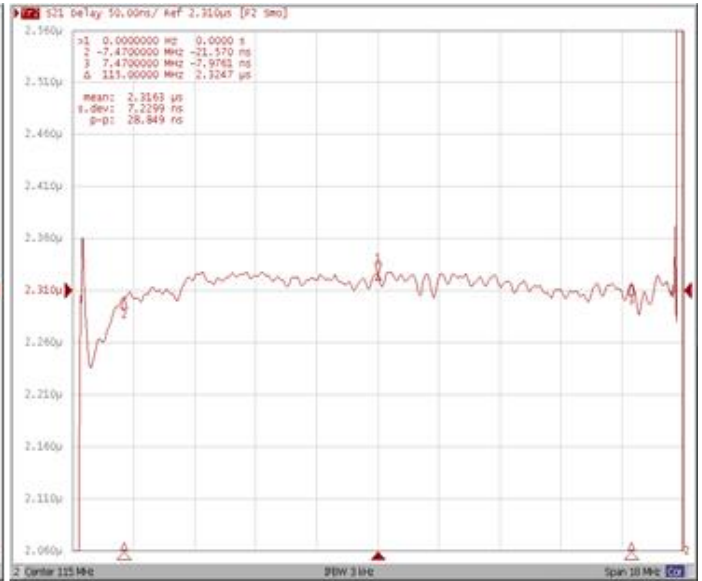


Frequency Response

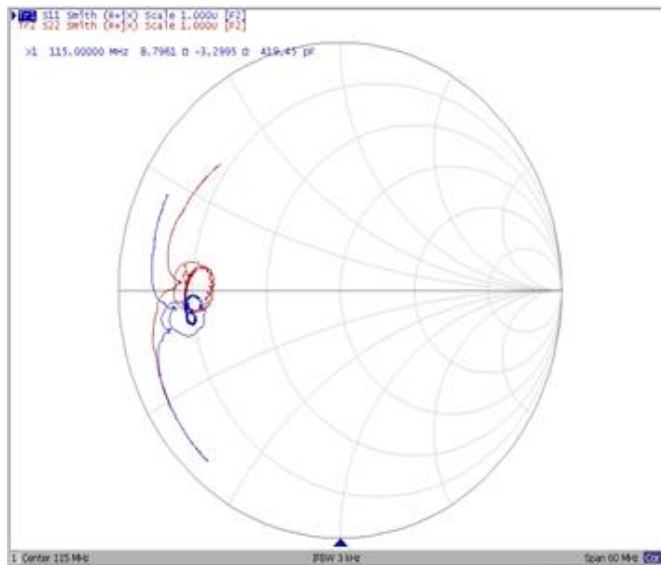
Ripple Variation Fo±7.47 MHz



Group Delay Variation Fo±7.47 MHz



Smith Chart



VSWR

