

- 115.00 MHz IF SAW Filter / 16.20 MHz Bandwidth
- Revision 1: 12. Jun. 2009

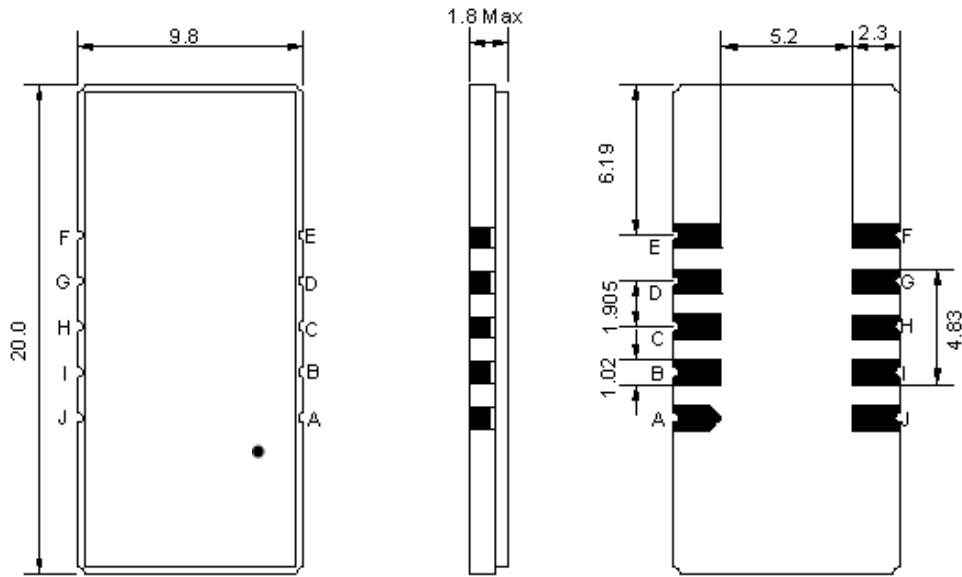
## Electrical Characteristics

MAXIMUM RATING				
PARAMETERS DESCRIPTION	UNIT	MINIMUM	TYPICAL	MAXIMUM
Operation Temperature Range	°C	-5	-	80
Storage Temperature Range	°C	-40	-	85
Maximum DC Voltage	V	-	-	10
Maximum Input Power	dBm	-	-	10
Source Impedance (single ended) <sup>(1)</sup>	Ω	-	50	-
Load Impedance (single ended) <sup>(1)</sup>	Ω	-	50	-
Package type & size	D1			
Length x Width	mm <sup>2</sup>	-	20.0 x 9.8	-
Height	mm	-	-	1.8

ELECTRICAL SPECIFICATION				
PARAMETERS DESCRIPTION	UNIT	MINIMUM	TYPICAL	MAXIMUM
Center Frequency (Fo)	MHz	-	115.0	-
Insertion Loss at Fo	dB	-	22.50	24.00
Group Delay Variation (Fo±7.5MHz)	nsec	-	48	80
Absolute Delay	usec	-	2.23	-
Passband Ripple (Fo±7.5MHz)	dB	-	0.55	1.00
Bandwidth at -1dB	MHz	16.05	16.22	-
Bandwidth at -3dB	MHz	-	16.55	-
Bandwidth at -40dB	MHz	-	17.92	18.10
Bandwidth at -50dB	MHz	-	18.05	-
Ultimate Rejection	dB	50	57	-
Temperature coefficient	ppm/°C	-	-72	-

**Notes :** (1) With Matching Network (Ref. Testing Environment Circuit as shown below).  
Those impedances could be modified with different impedance values and/or structures, if necessary.

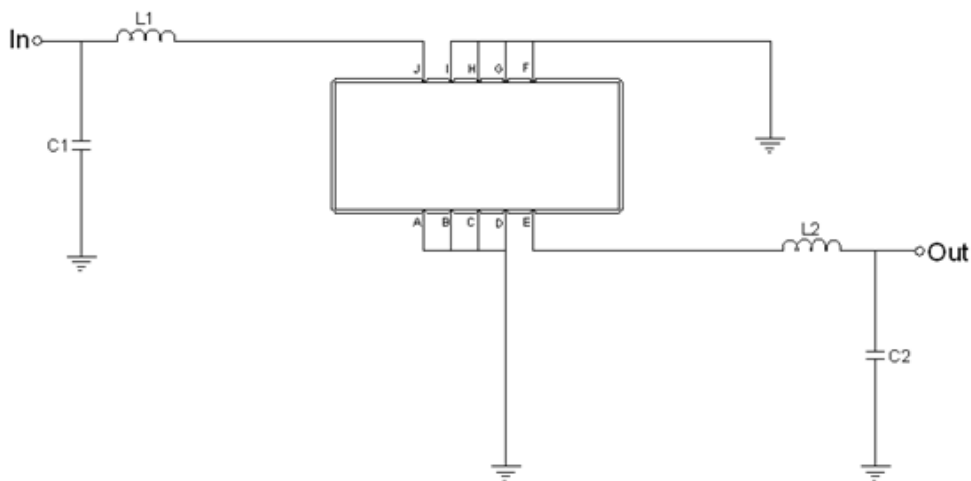
## Package Dimensions



- ① **TRANSKO:** Brand
- ② **TA11515A:** Model Name
- ③ **X :** Date Code (Year)
- ④ **Y :** Date Code (Month)
- ⑤ **Z :** Date Code (Date)
- : Index Dot

Pin Description	
A, B, C, D, F, G, H, I	Ground
J	Input
E	Output

## Testing Environment



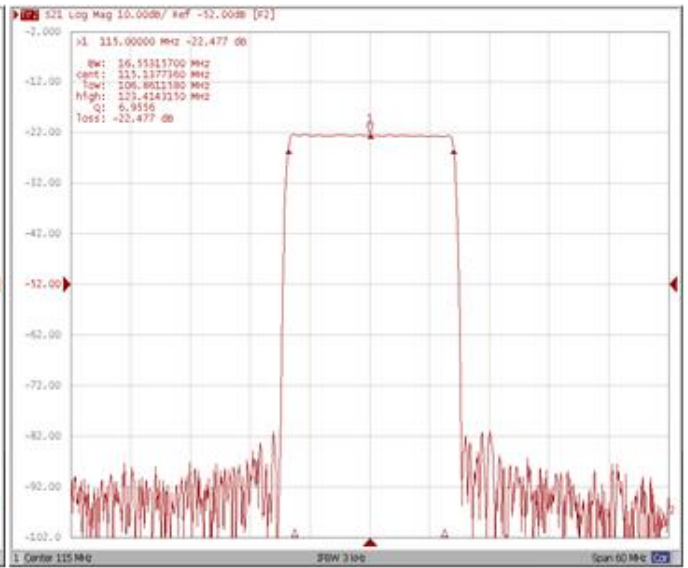
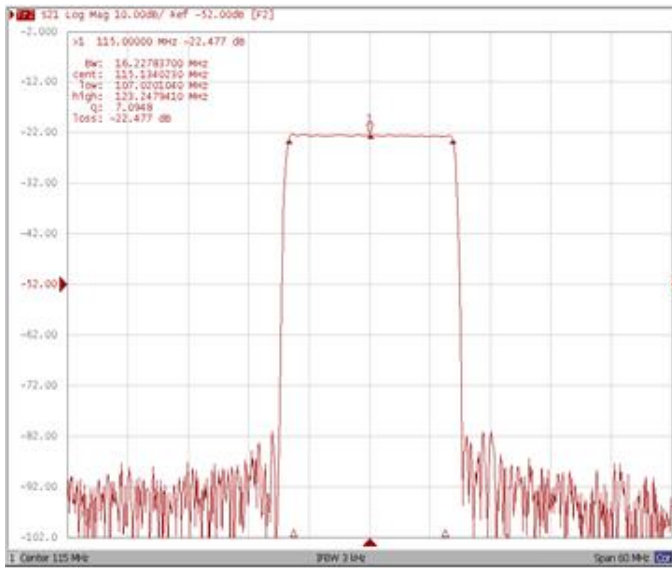
Test Fixture & Values	
Input	L1=39nH, C1=15pF
Output	L2=39nH, C2=13pF
Source/Load Impedance	50 Ω

## Frequency Characteristics

**Frequency Response**

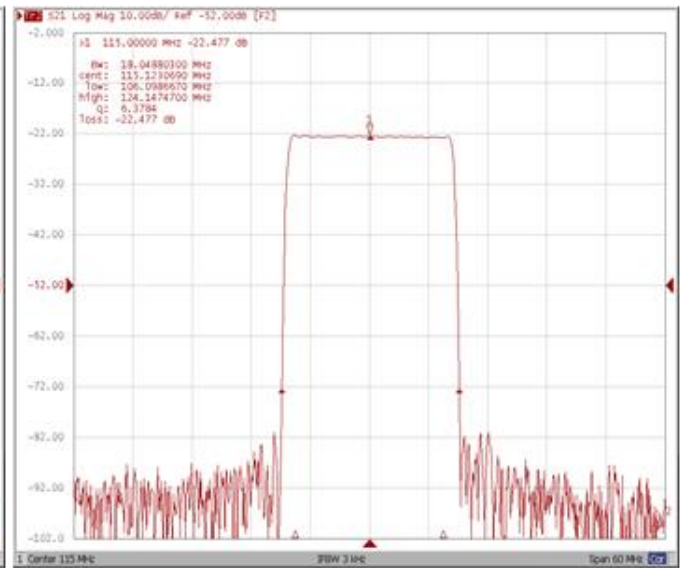
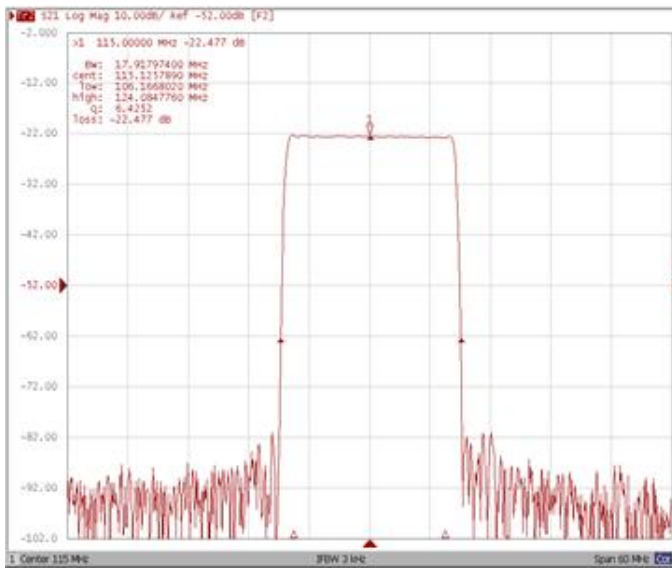
**Bandwidth at -1.0 dB**

**Bandwidth at -3.0 dB**



**Bandwidth at -40.0 dB**

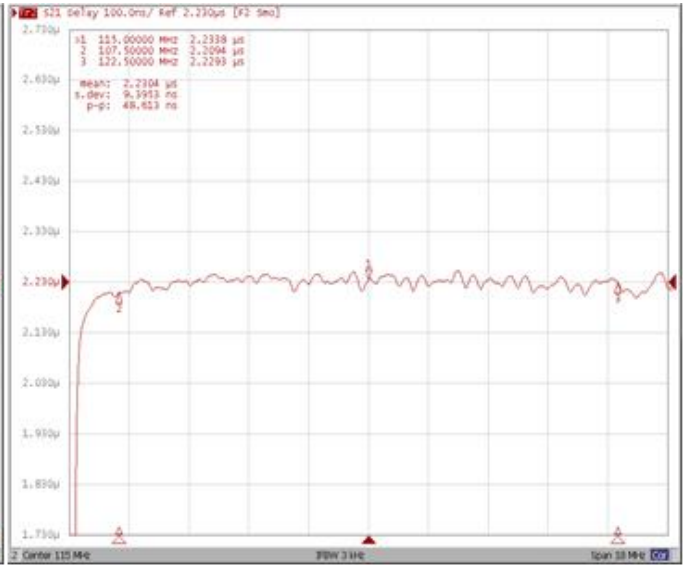
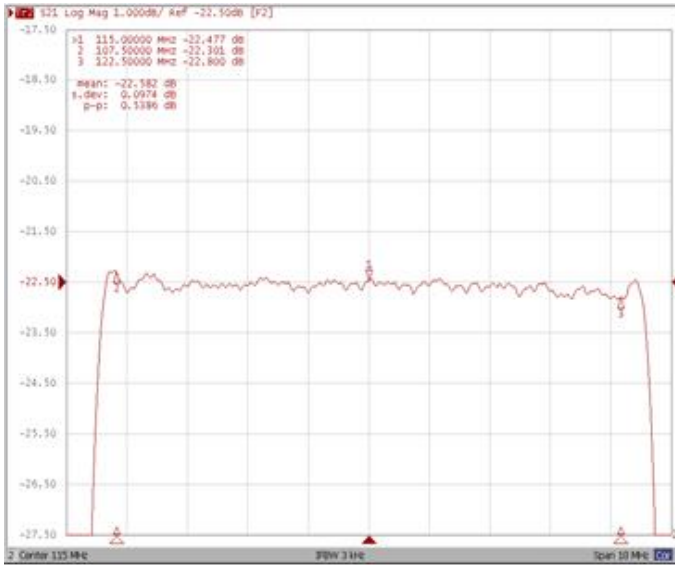
**Bandwidth at -50.0 dB**



**Frequency Response**

**Ripple Variation Fo±7.5MHz**

**Group Delay Variation Fo±7.5MHz**



**Smith Chart**

**VSWR**

