

- 92.20 MHz IF SAW Filter / 26.08MHz Bandwidth
- Revision 0: 16. Jul. 2010

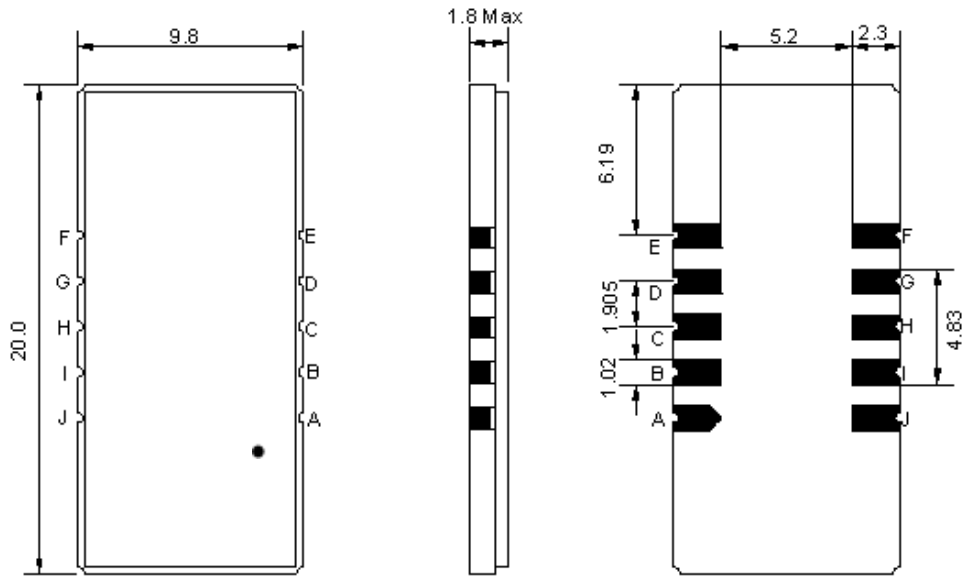
## Electrical Characteristics

MAXIMUM RATING				
PARAMETERS DESCRIPTION	UNIT	MINIMUM	TYPICAL	MAXIMUM
Operation Temperature Range	°C	-	+25	-
Storage Temperature Range	°C	-40	-	+85
Maximum DC Voltage	V	-	-	10
Maximum Input Power	dBm	-	-	10
Source Impedance (single ended) <sup>(1)</sup>	Ω	-	50	-
Load Impedance (single ended) <sup>(1)</sup>	Ω	-	50	-
Package type & size	D1			
Length x Width	mm <sup>2</sup>	-	20.0 x 9.8	-
Height	mm	-	-	1.8

ELECTRICAL SPECIFICATION				
PARAMETERS DESCRIPTION	UNIT	MINIMUM	TYPICAL	MAXIMUM
Center Frequency (Fo)	MHz	-	92.20	-
Insertion Loss at Fo	dB	-	23.30	25.50
Group Delay Variation (Fo±12.80MHz)	nsec	-	40	80
Absolute Delay at Fo	usec	-	2.19	2.30
Passband Ripple Variation(Fo±12.80MHz)	dB	-	0.70	1.00
Bandwidth at -1dB	MHz	25.85	26.08	-
Bandwidth at -3dB	MHz	-	26.40	-
Bandwidth at -20dB	MHz	-	27.34	-
Bandwidth at -40dB	MHz	-	27.77	27.95
Ultimate Rejection	dB	50	55	-
Temperature Coefficient	ppm/°C	-	-72	-

**Notes :** (1) With Matching Network (Ref. Testing Environment Circuit as shown below).  
Those impedances could be modified with different impedance values and/or structures, if necessary.

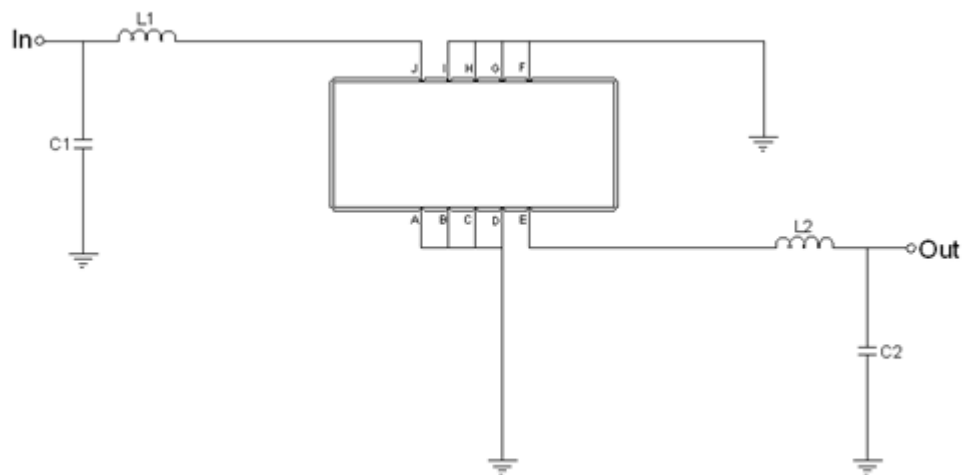
## Package Dimensions



- ① **TRANSKO:** Brand
- ② **TA09226A:** Model Name
- ③ **X :** Date Code (Year)
- ④ **Y :** Date Code (Month)
- ⑤ **Z :** Date Code (Date)
- : Index Dot

Pin Description	
A, B, C, D, F, G, H, I	Ground
J	Input
E	Output

## Testing Environment



Test Fixture & Values	
<b>Input</b>	L1 = 150 nH, C1=18 pF
<b>Output</b>	L2 = 120 nH, C2=16 pF
<b>Source/Load Impedance</b>	50 Ω

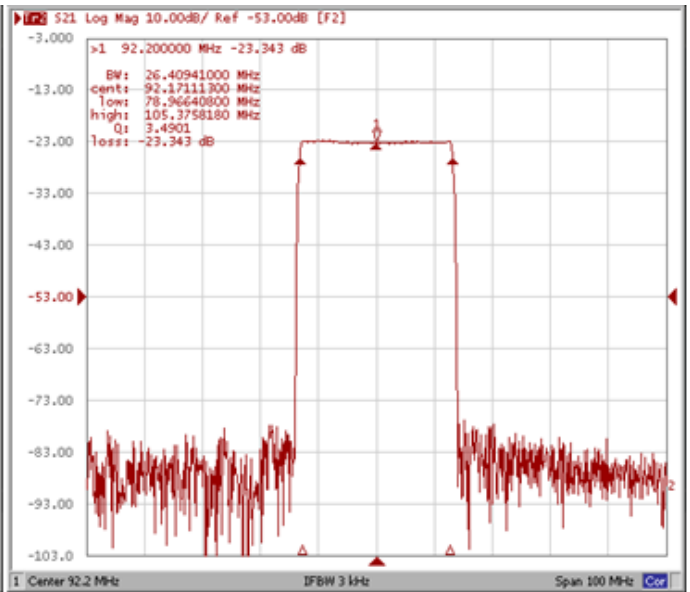
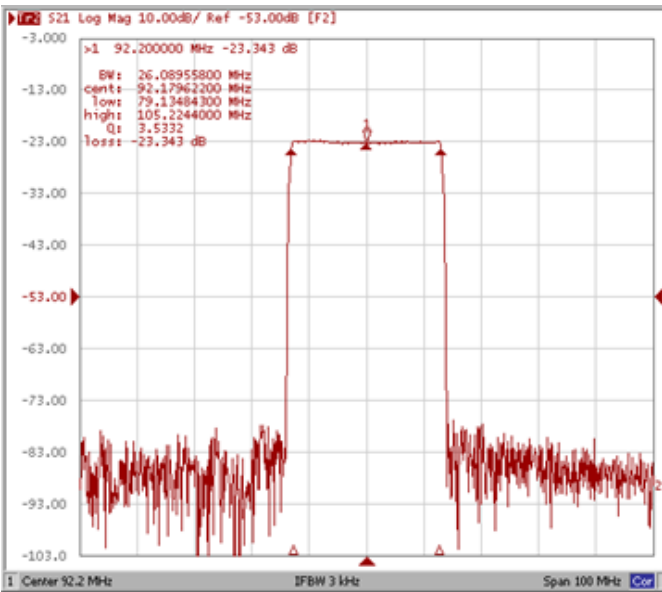
## Frequency Characteristics

### Frequency Response

\*Room Temperature: +25°C

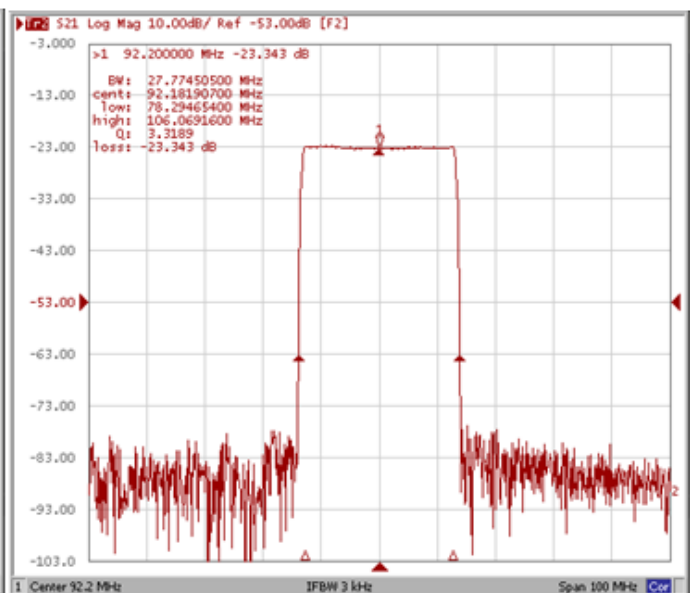
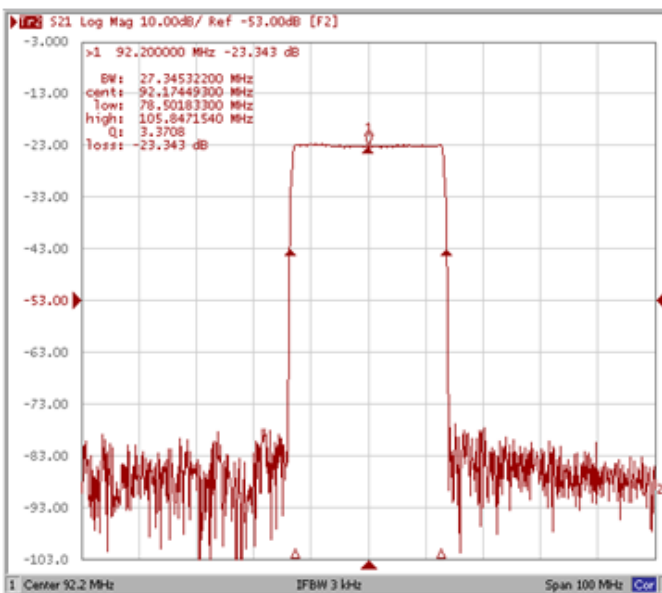
**Bandwidth at -1.0 dB**

**Bandwidth at -3.0 dB**



**Bandwidth at -20.0 dB**

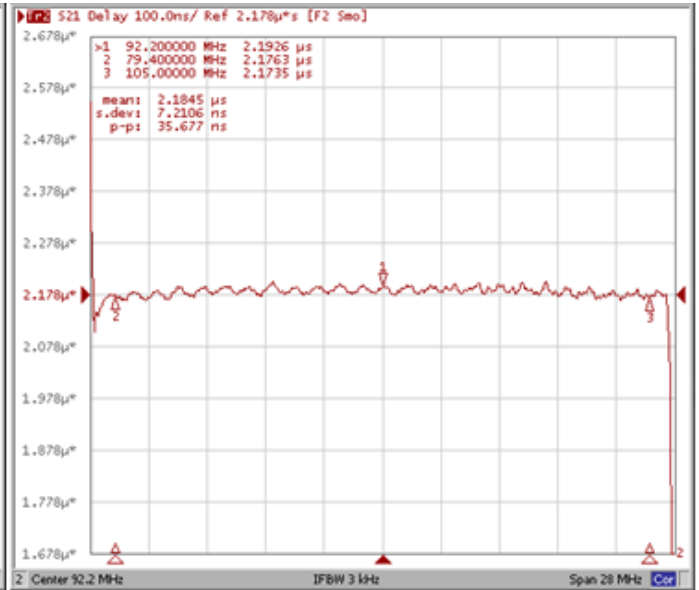
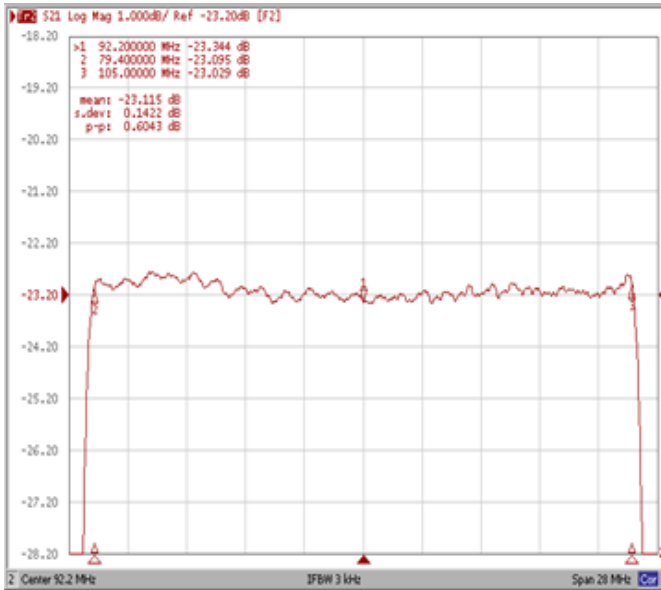
**Bandwidth at -40.0 dB**



**Frequency Response**

**Ripple Variation Fo±12.80MHz**

**Group Delay Variation Fo±12.80MHz**



**Smith Chart**

**VSWR**

