

- 92.20 MHz IF SAW Filter / 8.65 MHz Bandwidth
- Revision 0: 07. Sep. 2010

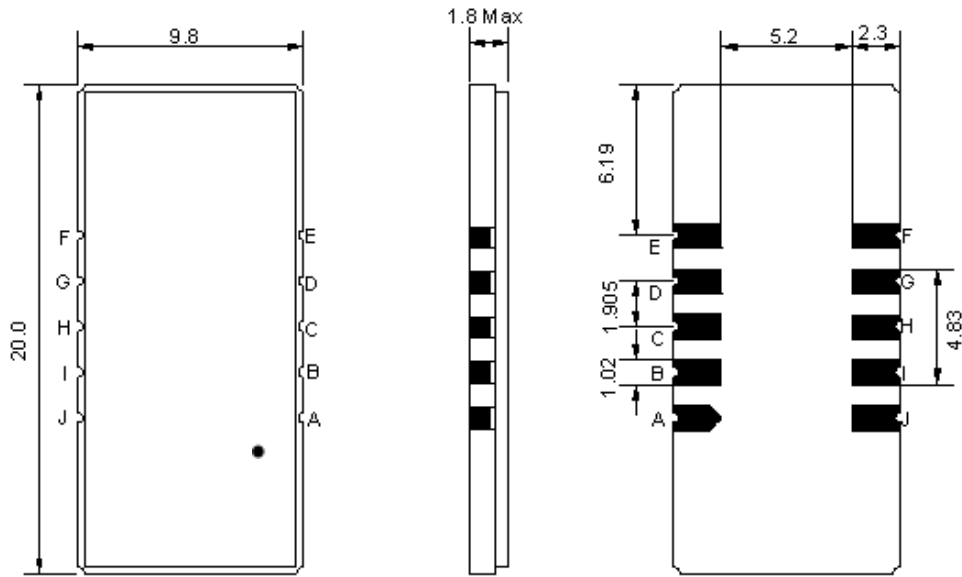
## Electrical Characteristics

MAXIMUM RATING				
PARAMETERS DESCRIPTION	UNIT	MINIMUM	TYPICAL	MAXIMUM
Operation Temperature Range	°C	-40	-	+85
Storage Temperature Range	°C	-40	-	+85
Maximum DC Voltage	V	-	-	10
Maximum Input Power	dBm	-	-	10
Source Impedance (single ended) <sup>(1)</sup>	Ω	-	50	-
Load Impedance (single ended) <sup>(1)</sup>	Ω	-	50	-
Package type & size	D1			
Length x Width	mm <sup>2</sup>	-	20.0 x 9.8	-
Height	mm	-	-	1.8

ELECTRICAL SPECIFICATION				
PARAMETERS DESCRIPTION	UNIT	MINIMUM	TYPICAL	MAXIMUM
Center Frequency (Fo)	MHz	-	92.20	-
Insertion Loss at Fo	dB	-	24.00	26.00
Group Delay Variation (Fo±3.925MHz)	nsec	-	35	80
Absolute Delay at Fo	usec	-	3.00	-
Passband Ripple Variation(Fo±3.925MHz)	dB	-	0.40	0.90
Bandwidth at -1dB	MHz	7.85	8.65	-
Bandwidth at -3dB	MHz	-	9.00	-
Bandwidth at -40dB	MHz	-	10.49	10.65
Ultimate Rejection	dB	50	54	-
Temperature Coefficient	ppm/°C	-	-20	-

**Notes :** (1) With Matching Network (Ref. Testing Environment Circuit as shown below).  
Those impedances could be modified with different impedance values and/or structures, if necessary.

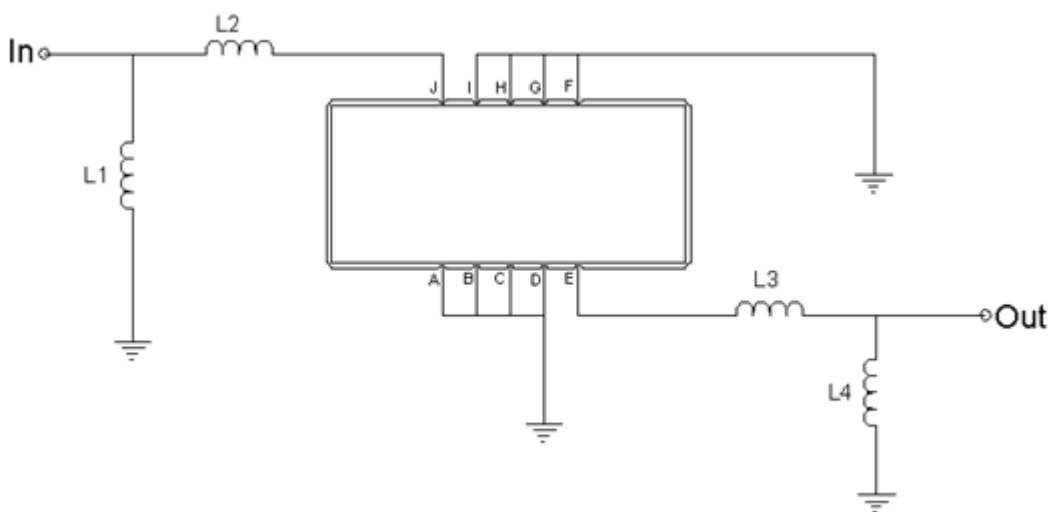
## Package Dimensions



- ① **TRANSKO:** Brand
- ② **TA09207A:** Model Name
- ③ **X :** Date Code (Year)
- ④ **Y :** Date Code (Month)
- ⑤ **Z :** Date Code (Date)
- : Index Dot

Pin Description	
A, B, C, D, F, G, H, I	Ground
J	Input
E	Output

## Testing Environment



Test Fixture & Values	
<b>Input</b>	L1 = 68 nH, L2 = 27 nH
<b>Output</b>	L3 = 12 nH, L4 = 68 nH
<b>Source/Load Impedance</b>	50 $\Omega$

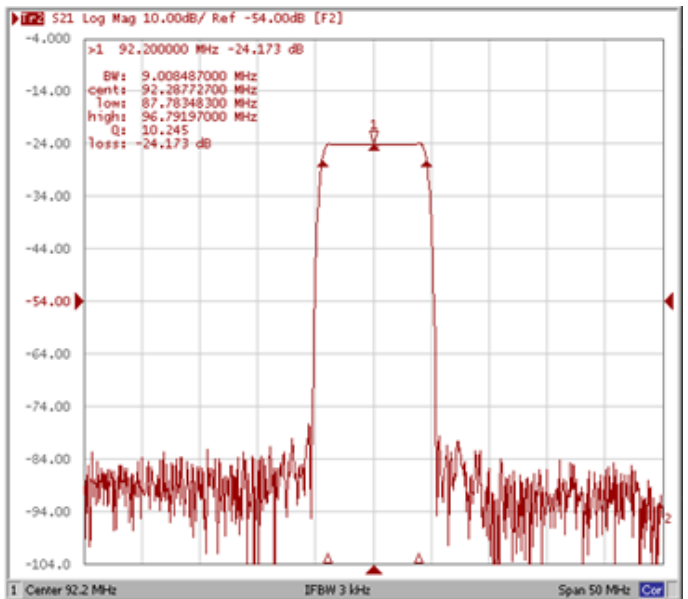
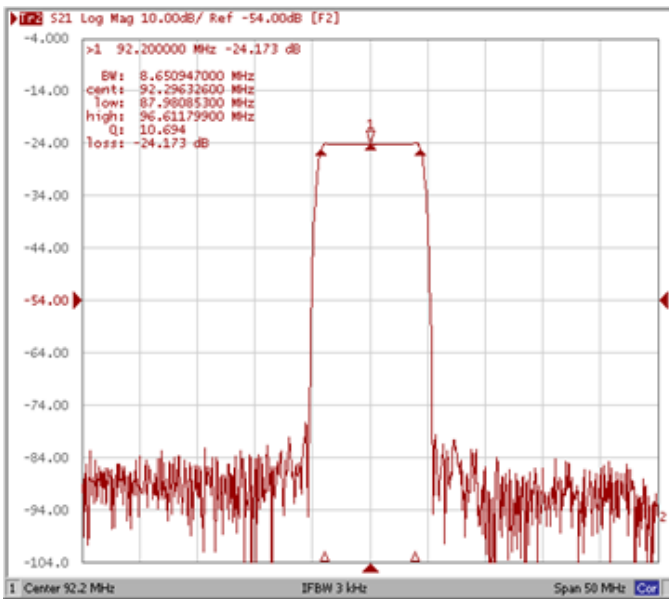
## Frequency Characteristics

### Frequency Response

\*Room Temperature: +25°C

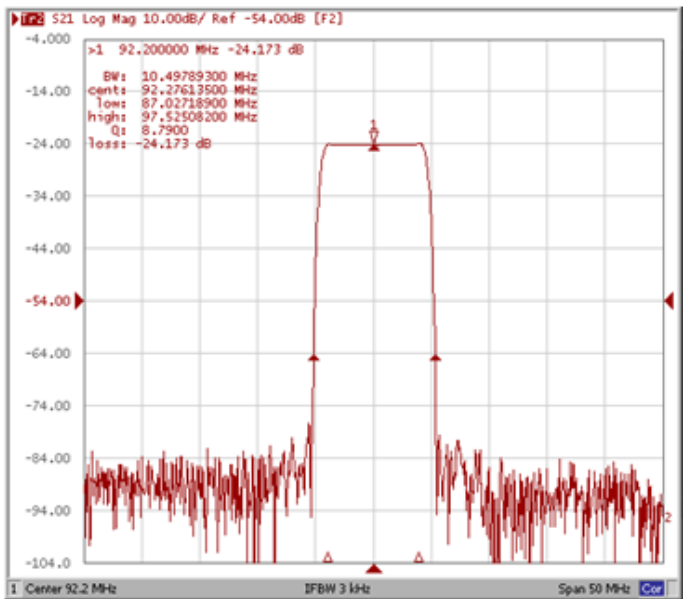
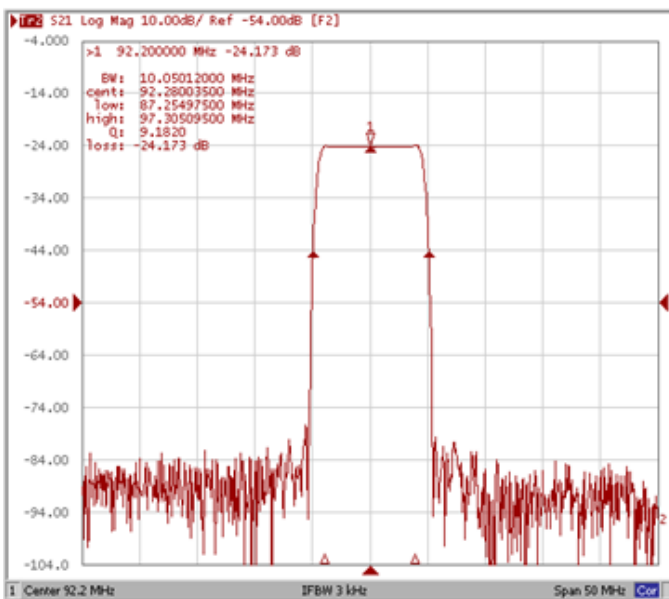
**Bandwidth at -1.0 dB**

**Bandwidth at -3.0 dB**



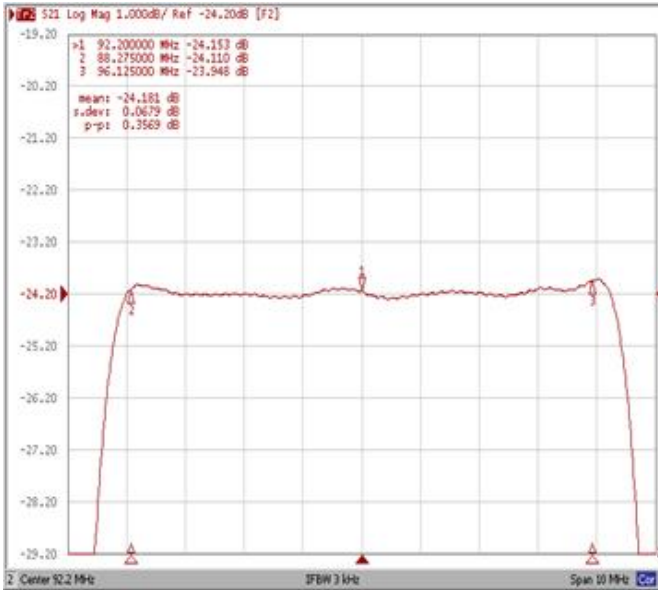
**Bandwidth at -20.0 dB**

**Bandwidth at -40.0 dB**

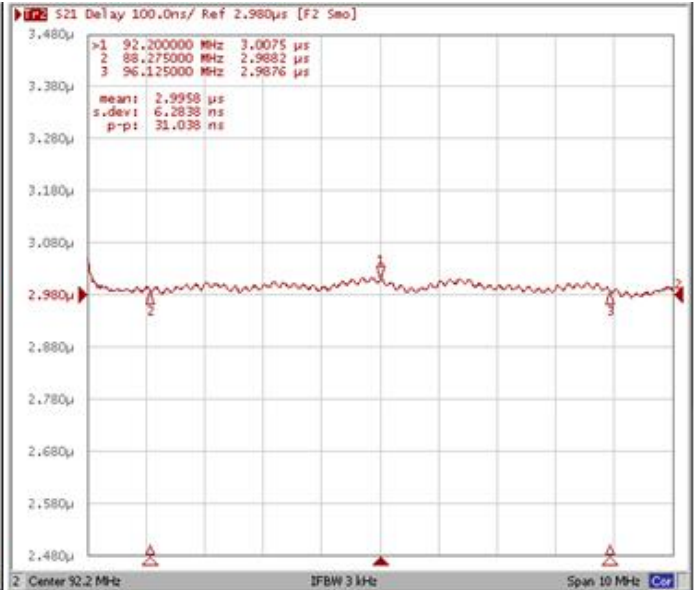


## Frequency Response

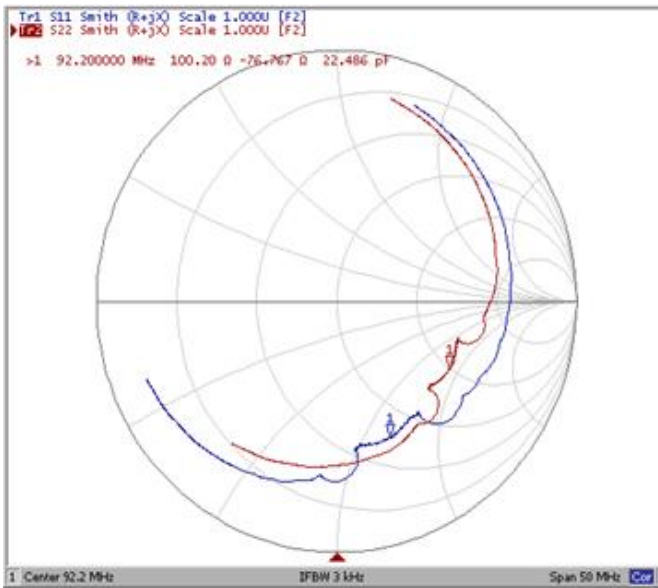
**Ripple Variation Fo±3.925MHz**



**Group Delay Variation Fo±3.925MHz**



**Smith Chart**



**VSWR**

