

- 75.0 MHz IF SAW Filter / 9.30 MHz Bandwidth
- Revision 0: 04 Apr. 2012

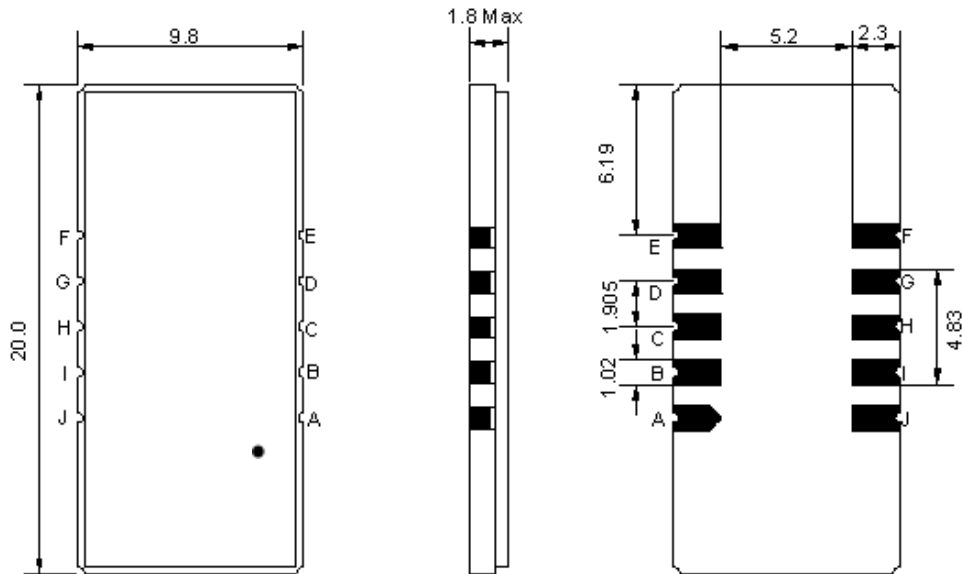
Electrical Characteristics

MAXIMUM RATING				
PARAMETERS DESCRIPTION	UNIT	MINIMUM	TYPICAL	MAXIMUM
Operation Temperature Range	°C	-	25	-
Storage Temperature Range	°C	-40	-	85
Maximum DC Voltage	V	-	-	10
Maximum Input Power	dBm	-	-	10
Source Impedance (single ended) ⁽¹⁾	Ω	-	50	-
Load Impedance (single ended) ⁽¹⁾	Ω	-	50	-
Package type & size	D1			
Length x Width	mm ²	-	20.0 x 9.8	-
Height	mm	-	-	1.8

ELECTRICAL SPECIFICATION				
PARAMETERS DESCRIPTION	UNIT	MINIMUM	TYPICAL	MAXIMUM
Center Frequency (Fo)	MHz	-	75.00	-
Insertion Loss at Fo	dB	-	28.00	30.00
Amplitude Ripple (Fo ±4.50 MHz)	dB _{p-p}	-	0.65	1.2
Group Delay Variation (Fo ±4.50 MHz)	nsec	-	92	200
Absolute Delay at Fo	μsec	-	2.40	-
Bandwidth at -1.0 dB	MHz	9.20	9.30	-
Bandwidth at -3.0 dB	MHz	-	9.50	-
Bandwidth at -35.0 dB	MHz	-	10.30	10.40
Relative Attenuation: (Out of Band Gain)				
Fc ± 5.2MHz	dB	30	40	-
Fc ± 6.0MHz	dB	40	45	-
Fc ± 10.0MHz	dB	40	45	-
Fc ± 15.0MHz	dB	40	45	-
Temperature coefficient	ppm/°C	-	-18	-

Notes : (1) With Matching Network (Ref. Testing Environment Circuit as shown below).
Those impedances could be modified with different impedance values and/or structures, if necessary.

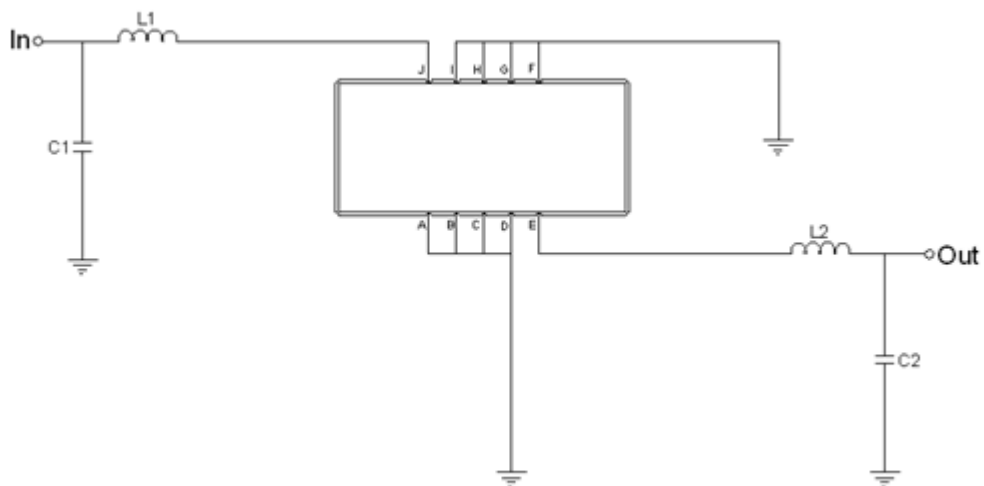
Package Dimensions



- ① **TRANSKO:** Brand
- ② **TA07509C:** Model Name
- ③ **X :** Date Code (Year)
- ④ **Y :** Date Code (Month)
- ⑤ **Z :** Date Code (Date)
- : Index Dot

Pin Description	
A, B, C, D, F, G, H, I	Ground
J	Input
E	Output

Testing Environment



Test Fixture & Values	
Input	L1=180 nH, C1=12 pF
Output	L2=120 nH, C2=47 pF
Source/Load Impedance	50 Ω

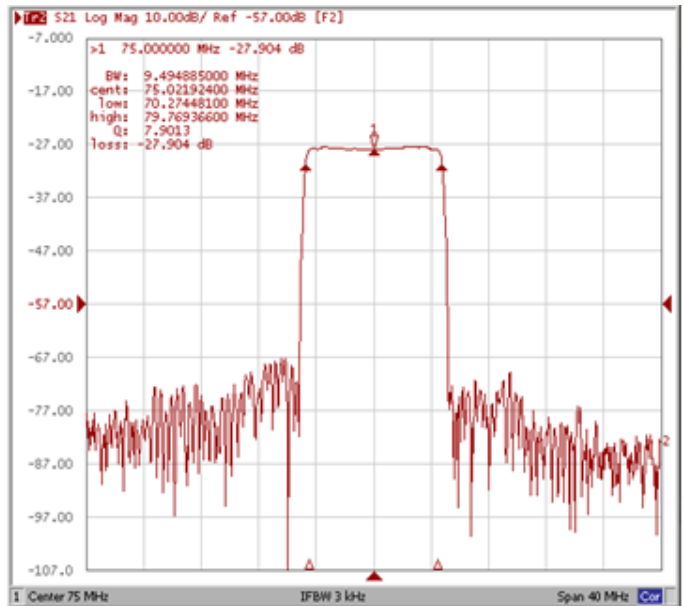
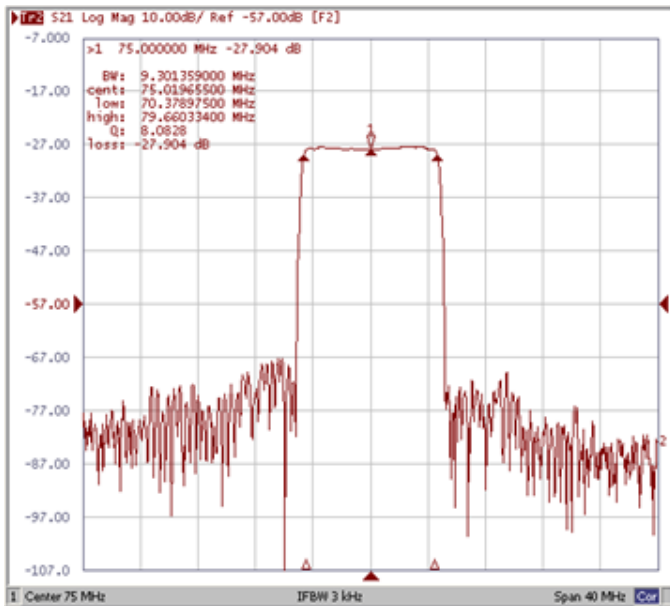
Frequency Characteristics

Frequency Response

*Operating Temperature: +25°C

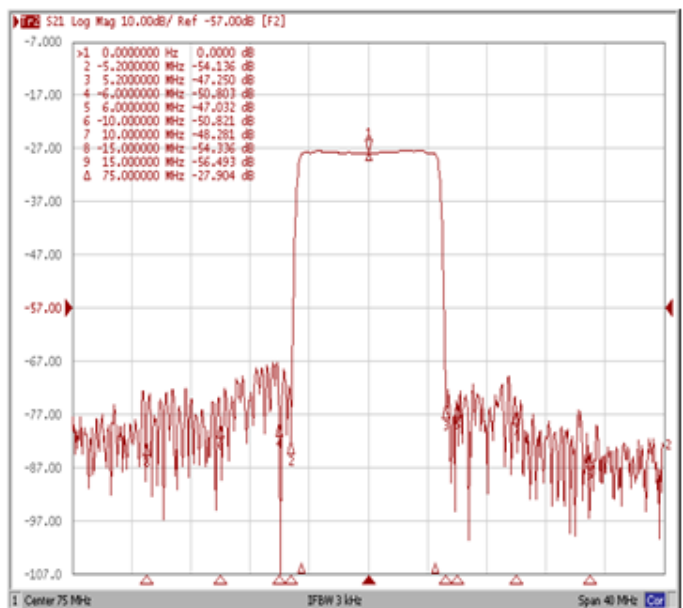
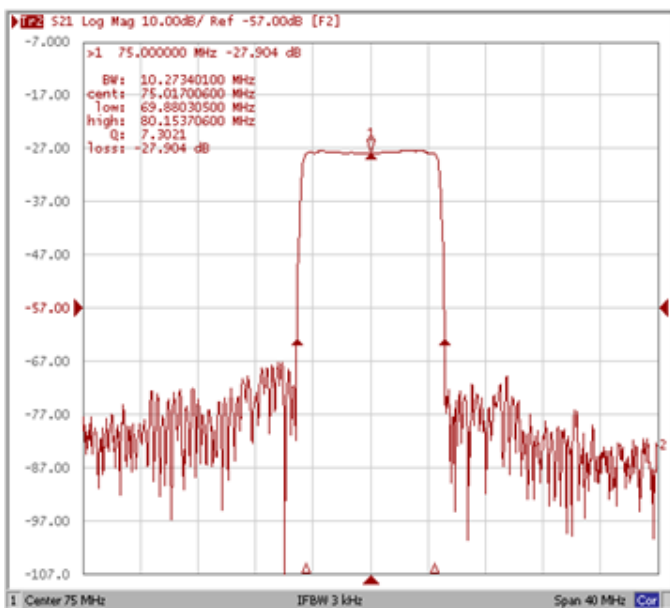
Bandwidth at -1.0 dB

Bandwidth at -3.0 dB



Bandwidth at -35.0 dB

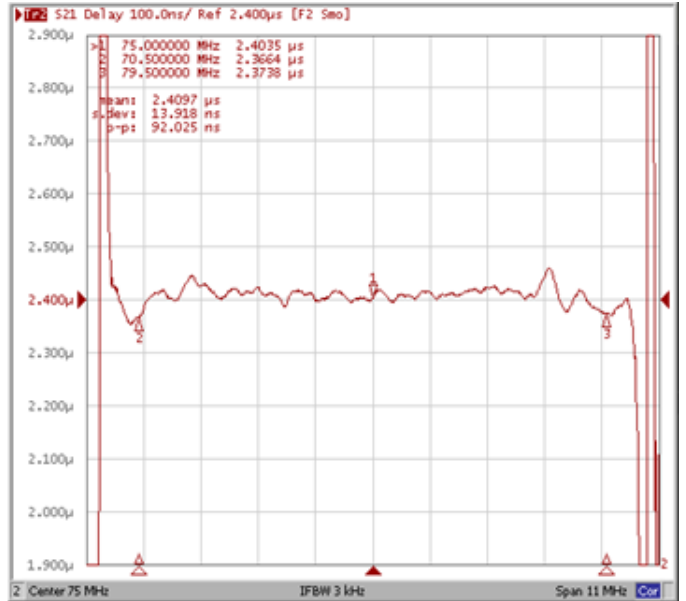
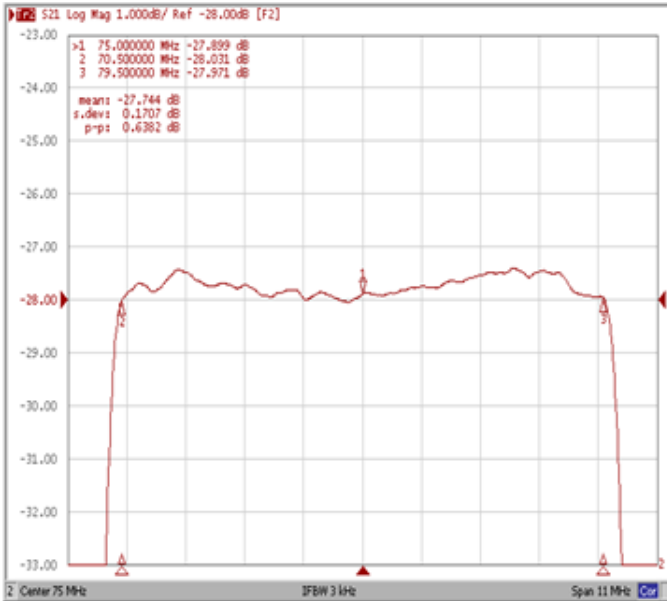
Out of Band Gain



Frequency Response

Ripple Variation Fo±4.5MHz

Group Delay Variation Fo±4.5MHz



Smith Chart

VSWR

