

- 65.0 MHz IF SAW Filter / 29.37 MHz Bandwidth
- Revision 0: 23. Feb. 2010

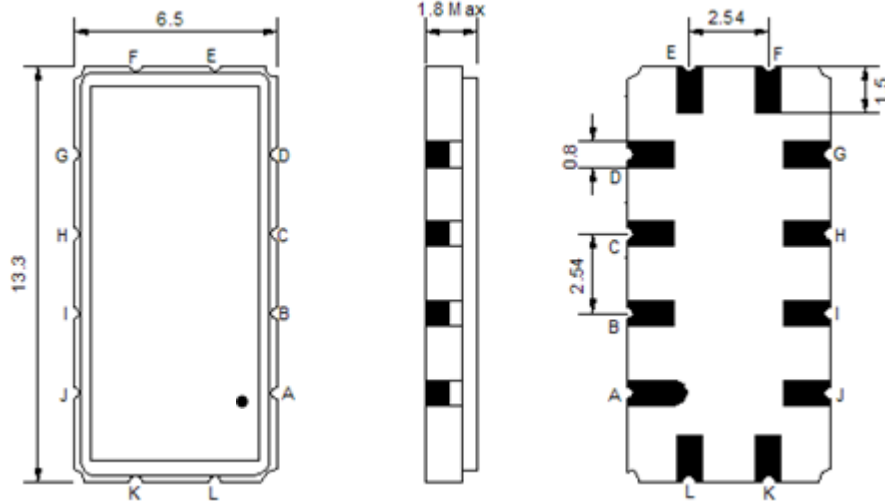
## Electrical Characteristics

MAXIMUM RATING				
PARAMETERS DESCRIPTION	UNIT	MINIMUM	TYPICAL	MAXIMUM
Operation Temperature Range	°C	-	25	-
Storage Temperature Range	°C	-40	-	85
Maximum DC Voltage	V	-	-	10
Maximum Input Power	dBm	-	-	10
Source Impedance (single ended) <sup>(1)</sup>	Ω	-	50	-
Load Impedance (single ended) <sup>(1)</sup>	Ω	-	50	-
Package type & size	V			
Length x Width	mm <sup>2</sup>	-	13.3 x 6.5	-
Height	mm	-	-	1.8

ELECTRICAL SPECIFICATION				
PARAMETERS DESCRIPTION	UNIT	MINIMUM	TYPICAL	MAXIMUM
Center Frequency (Fo)	MHz	-	65.0	-
Insertion Loss at Fo	dB	-	31.6	33.5
Group Delay Variation (Fo±14.32MHz)	nsec	-	43	70
Absolute Delay	usec	-	1.69	-
Passband Ripple (Fo±14.32MHz)	dB	-	0.55	1.0
Bandwidth at -1dB	MHz	29.05	29.37	-
Bandwidth at -3dB	MHz	-	29.88	-
Bandwidth at -40dB	MHz	-	32.00	32.10
Ultimate Rejection	dB	40	43	-
Temperature coefficient	ppm/°C	-	-72	-

**Notes :** (1) With Matching Network (Ref. Testing Environment Circuit as shown below).  
Those impedances could be modified with different impedance values and/or structures, if necessary.

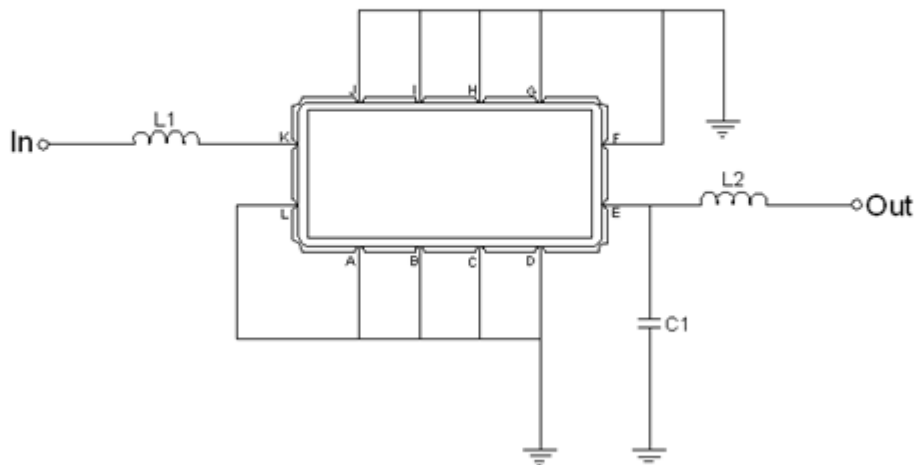
## Package Dimensions



- ① **TRANSKO:** Brand
- ② **TA06529D:** Model Name
- ③ **X :** Date Code (Year)
- ④ **Y :** Date Code (Month)
- ⑤ **Z :** Date Code (Date)
- : Index Dot

Pin Description	
A, B, C, D, F, G, H, I, J, L	Ground
K	Input
E	Output

## Testing Environment

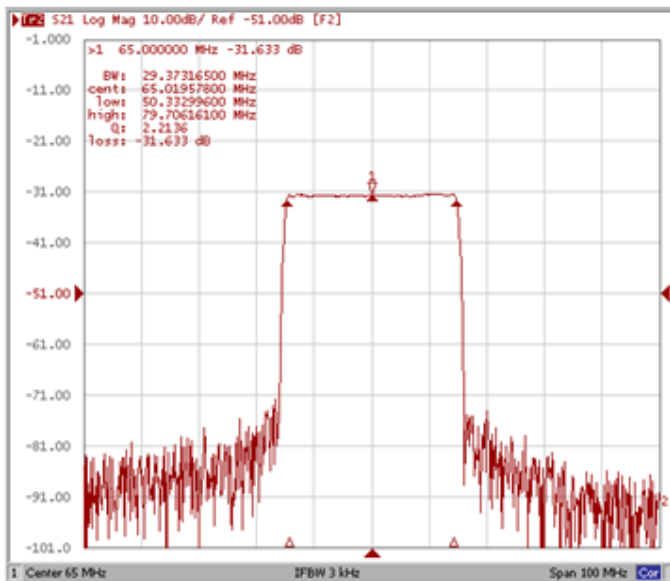


Test Fixture & Values	
Input	L1 = 270 nH
Output	L2 = 270 nH, C1 = 13 pF
Source/Load Impedance	50 Ω

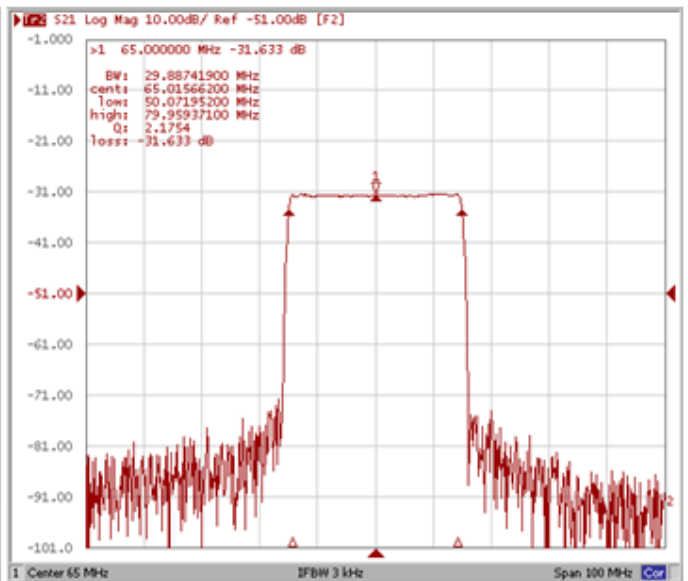
## Frequency Characteristics

### Frequency Response

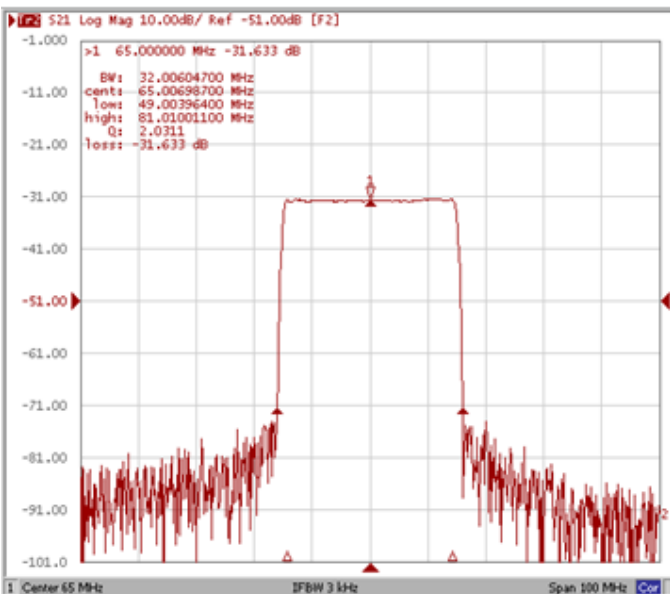
**Bandwidth at -1.0 dB**



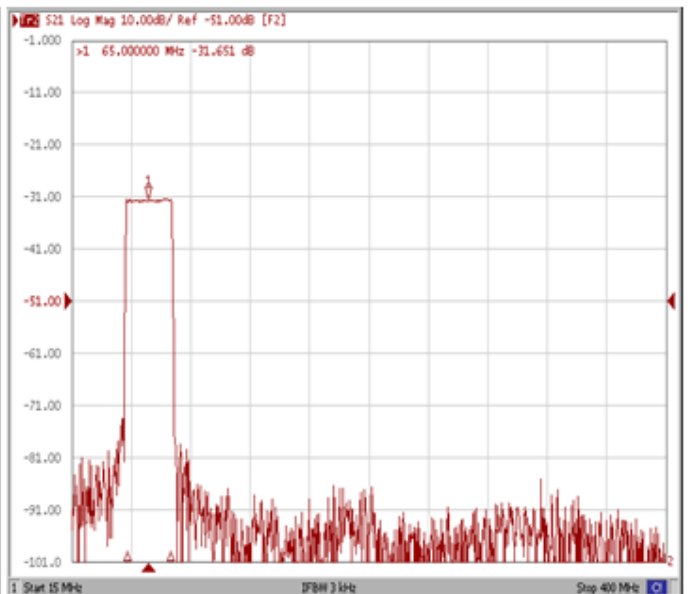
**Bandwidth at -3.0 dB**



**Bandwidth at -40.0 dB**



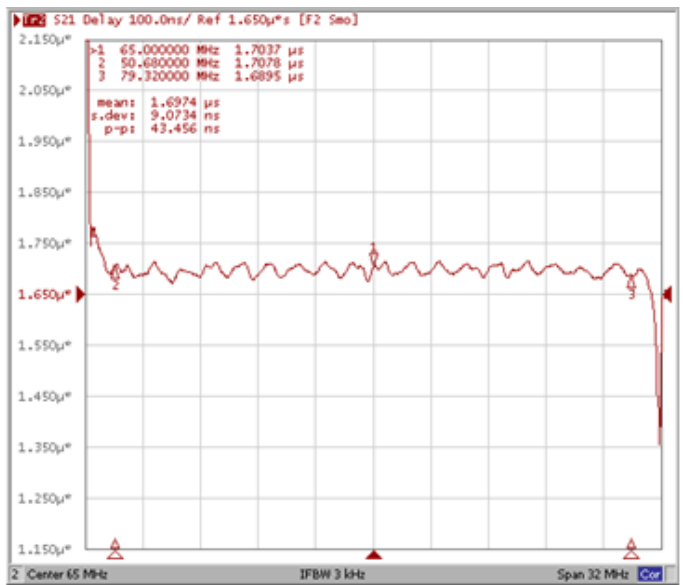
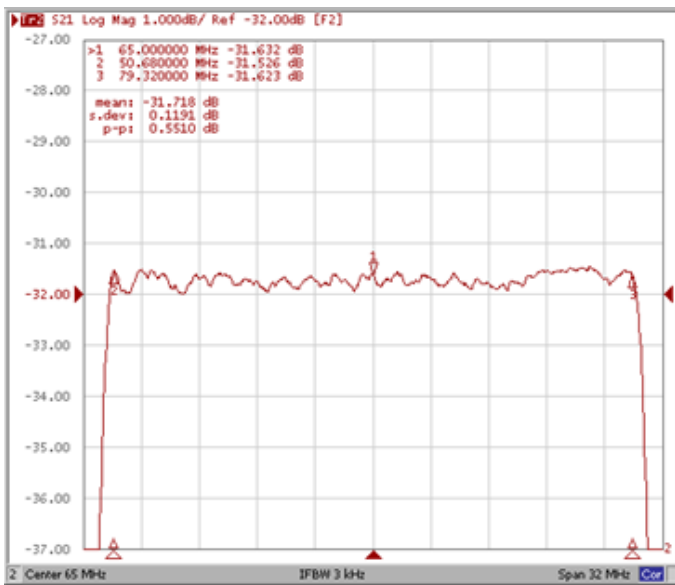
**Wide Band**



**Frequency Response**

**Ripple Variation  $F_0 \pm 14.32\text{MHz}$**

**Group Delay Variation  $F_0 \pm 14.32\text{MHz}$**



**Smith Chart**

**VSWR**

