

- 62.5 MHz IF SAW Filter / 14.80 MHz Bandwidth
- Revision 0: 21. Jan. 2009

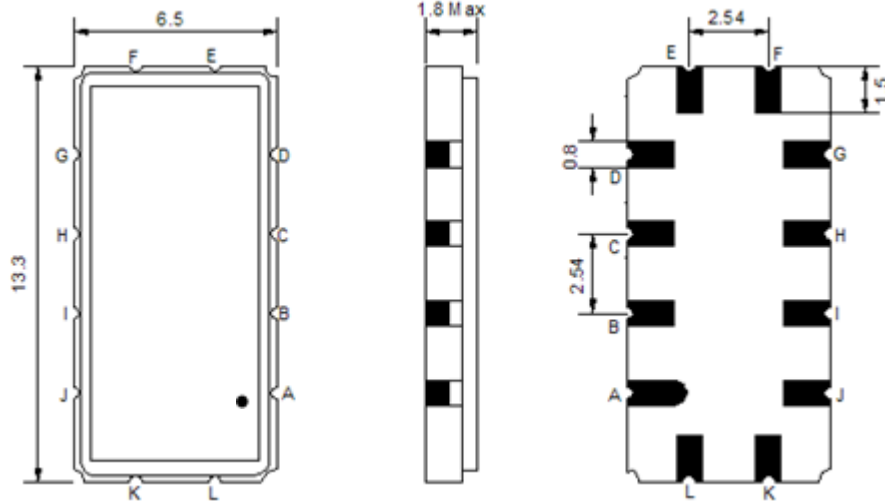
## Electrical Characteristics

MAXIMUM RATING				
PARAMETERS DESCRIPTION	UNIT	MINIMUM	TYPICAL	MAXIMUM
Operation Temperature Range	°C	-	25	-
Storage Temperature Range	°C	-40	-	85
Maximum DC Voltage	V	-	-	10
Maximum Input Power	dBm	-	-	10
Source Impedance (single ended) <sup>(1)</sup>	Ω	-	50	-
Load Impedance (single ended) <sup>(1)</sup>	Ω	-	50	-
Package type & size	V			
Length x Width	mm <sup>2</sup>	-	13.3 x 6.5	-
Height	mm	-	-	1.8

ELECTRICAL SPECIFICATION				
PARAMETERS DESCRIPTION	UNIT	MINIMUM	TYPICAL	MAXIMUM
Center Frequency (Fo)	MHz	-	62.5	-
Insertion Loss at Fo	dB	-	23.8	25.0
Group Delay Variation (Fo±6.92MHz)	ns	-	30	80
Absolute Delay Time at Fo	us	-	1.7	-
Temperature Coefficient	ppm/°C	-	-72	-
Amplitude Ripple (Fo±6.92MHz)	dB	-	0.5	1.0
Bandwidth at -1dB	MHz	14.60	14.80	-
Bandwidth at -3dB	MHz	-	15.30	-
Bandwidth at -40dB	MHz	-	17.30	17.50
Relative Attenuation				
Fo±8.5MHz	dB	20	25	
Lower sidelobe	dB	40	47	-
Upper sidelobe	dB	40	47	-

**Notes :** (1) With Matching Network (Ref. Testing Environment Circuit as shown below).  
Those impedances could be modified with different impedance values and/or structures, if necessary.

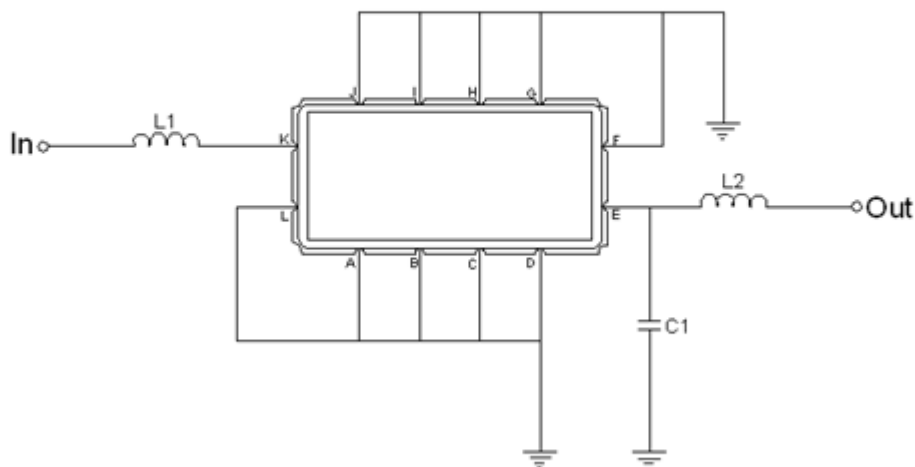
## Package Dimensions



- ① **TRANSKO:** Brand
- ② **TA06214B:** Model Name
- ③ **X :** Date Code (Year)
- ④ **Y :** Date Code (Month)
- ⑤ **Z :** Date Code (Date)
- : Index Dot

Pin Description	
A, B, C, D, F, G, H, I, J, L	Ground
K	Input
E	Output

## Testing Environment

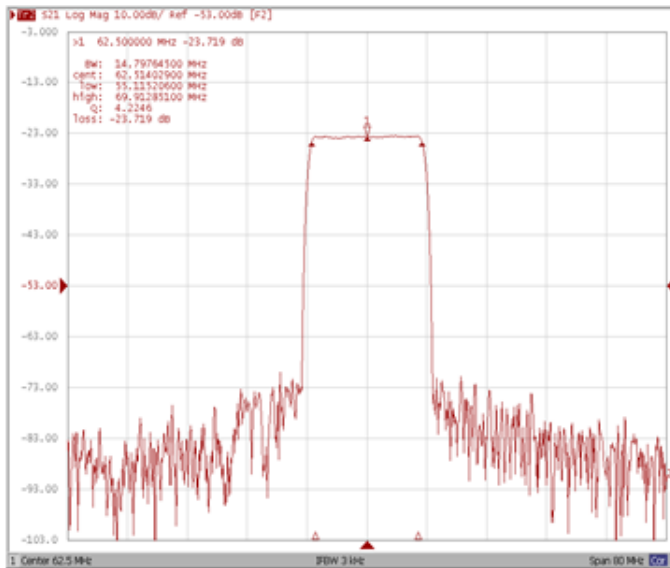


Test Fixture & Values	
Input	L1=220 nH
Output	L2=220 nH, C1=15pF
Source/Load Impedance	50 Ω

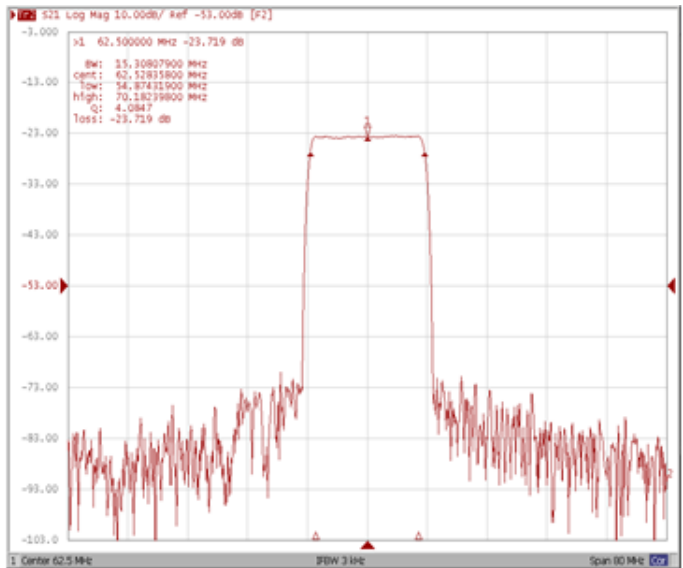
## Frequency Characteristics

### Frequency Response

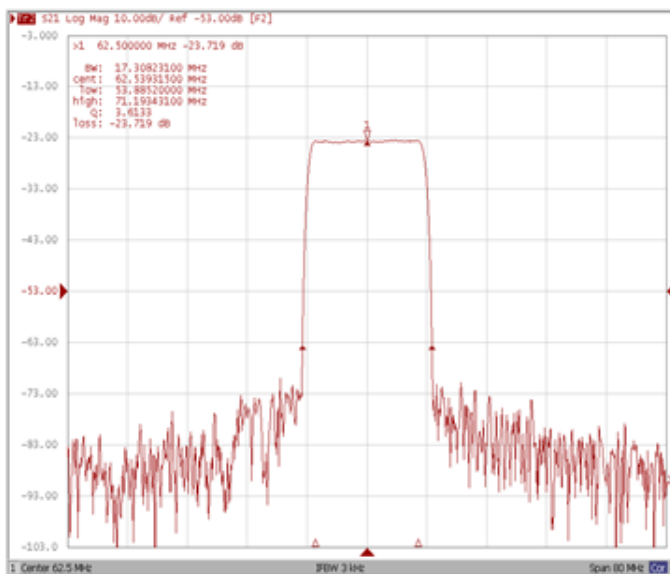
**Bandwidth at -1.0 dB**



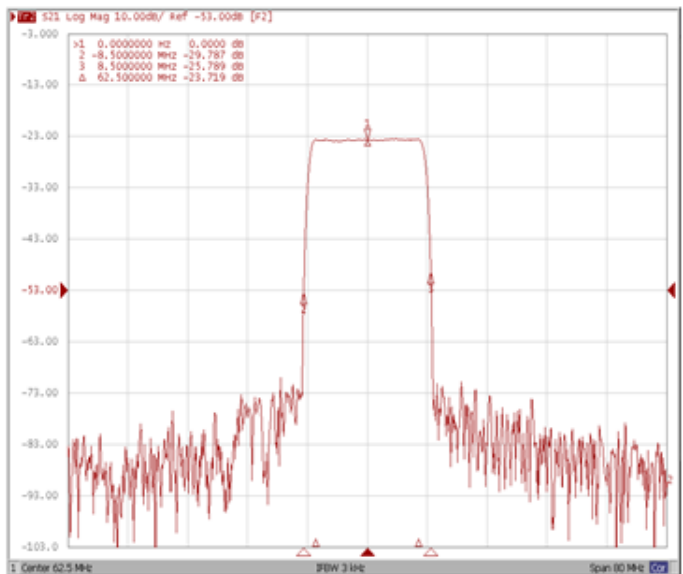
**Bandwidth at -3.0 dB**



**Bandwidth at -40.0 dB**

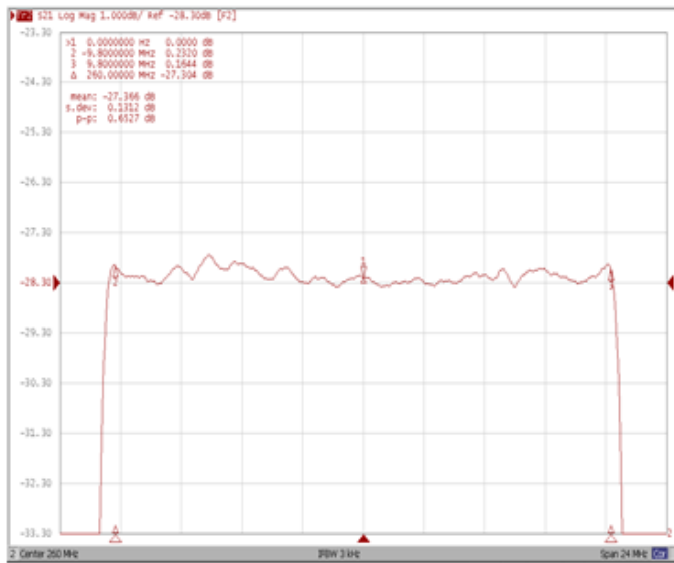


**Attenuation Fo ±8.5MHz**

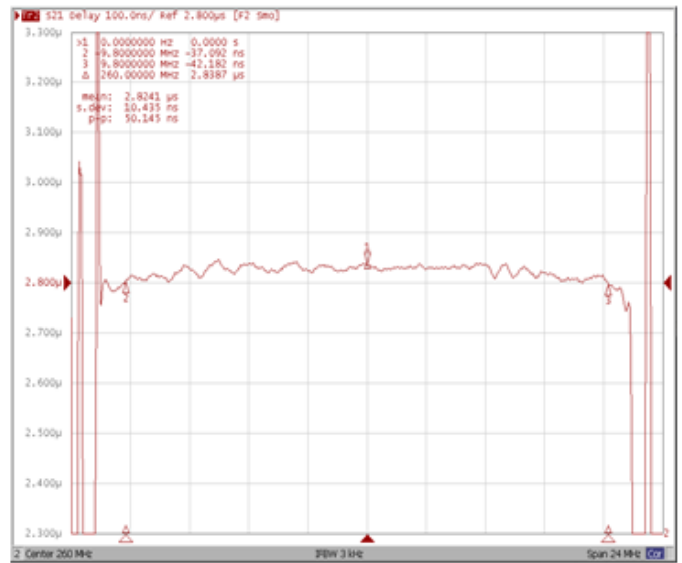


**Frequency Response**

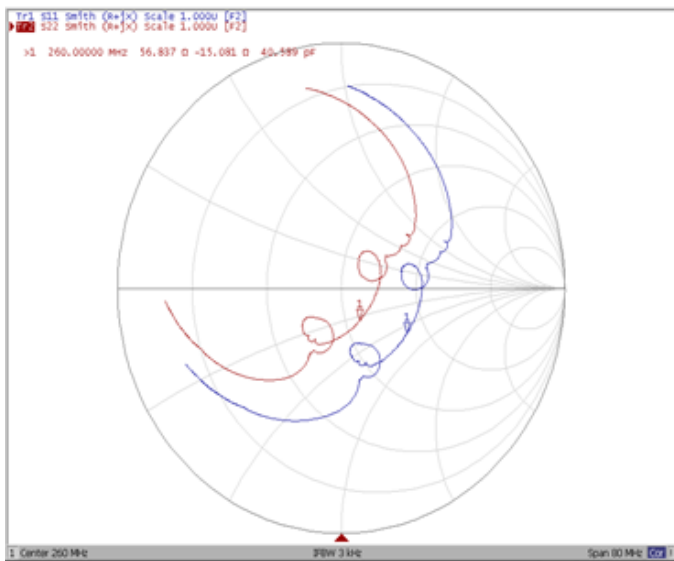
**Ripple Variation Fo±6.92MHz**



**Group Delay Variation Fo±6.92MHz**



**Smith Chart**



**VSWR**

